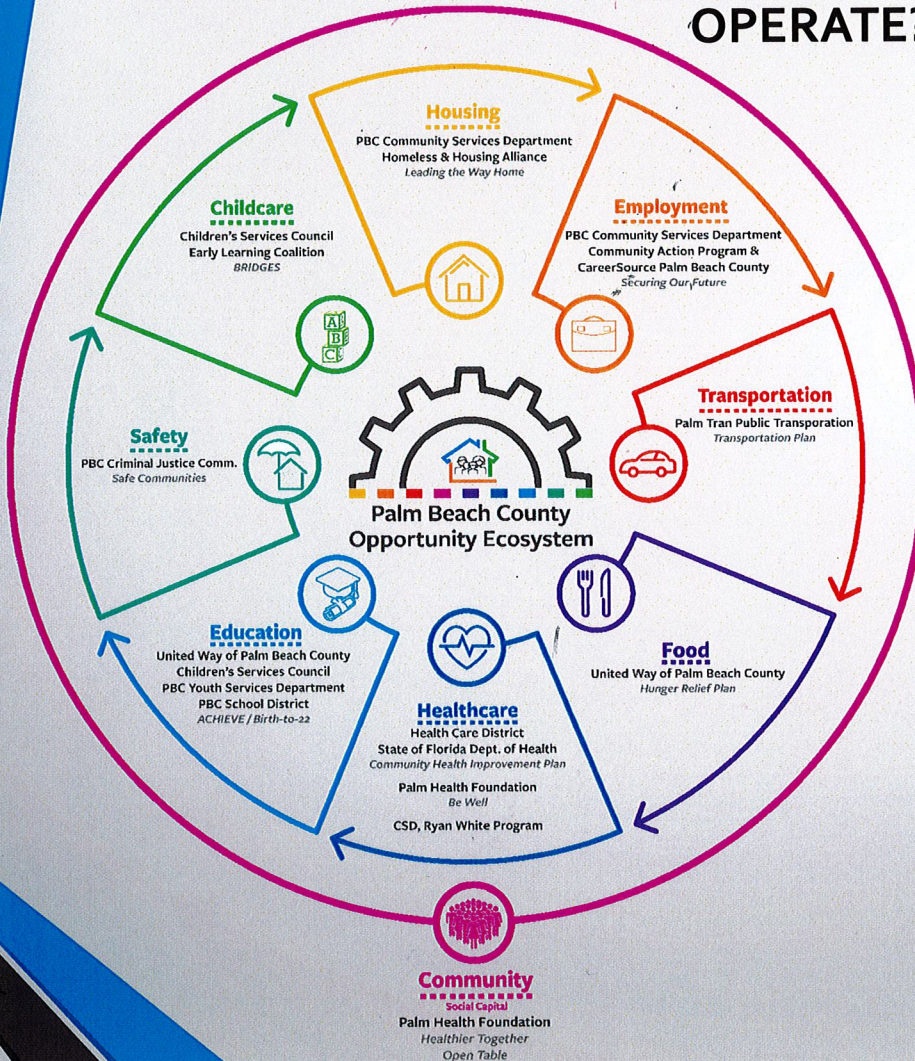


WHAT SHOULD A SYSTEM OF CARE DO AND HOW SHOULD IT OPERATE?



Each domain represents a system of care with a Backbone organization that focuses on:

- Quality of services
- Accessibility
- Availability
- Accountability
- Coordination

A set of core values govern how we approach our work (must develop)

- Institutional and structural racism must be dismantled in order to address the disparities that currently exist
- Services should be provided in the least restrictive environment
- People-centered approach
- HHS are interdependent and must be integrated to maximize opportunity