



Palm Beach County
Classification & Pay Plan
2009-2010

For the Board of County Commissioners
Effective October 1, 2009

Prepared by the Human Resources Department

INDEX

Page #

SECTION I Pay Policies

Organization Chart	2
Pay Periods and Pay Days	3
Holiday Schedule	4
Pay Policies	5

SECTION II Classification and Pay Schedule

Alphabetical Listing of Job Classification Titles	15
Non-Bargaining, CWA Bargaining Unit and Fire Rescue Management Unit Salary Schedule	46

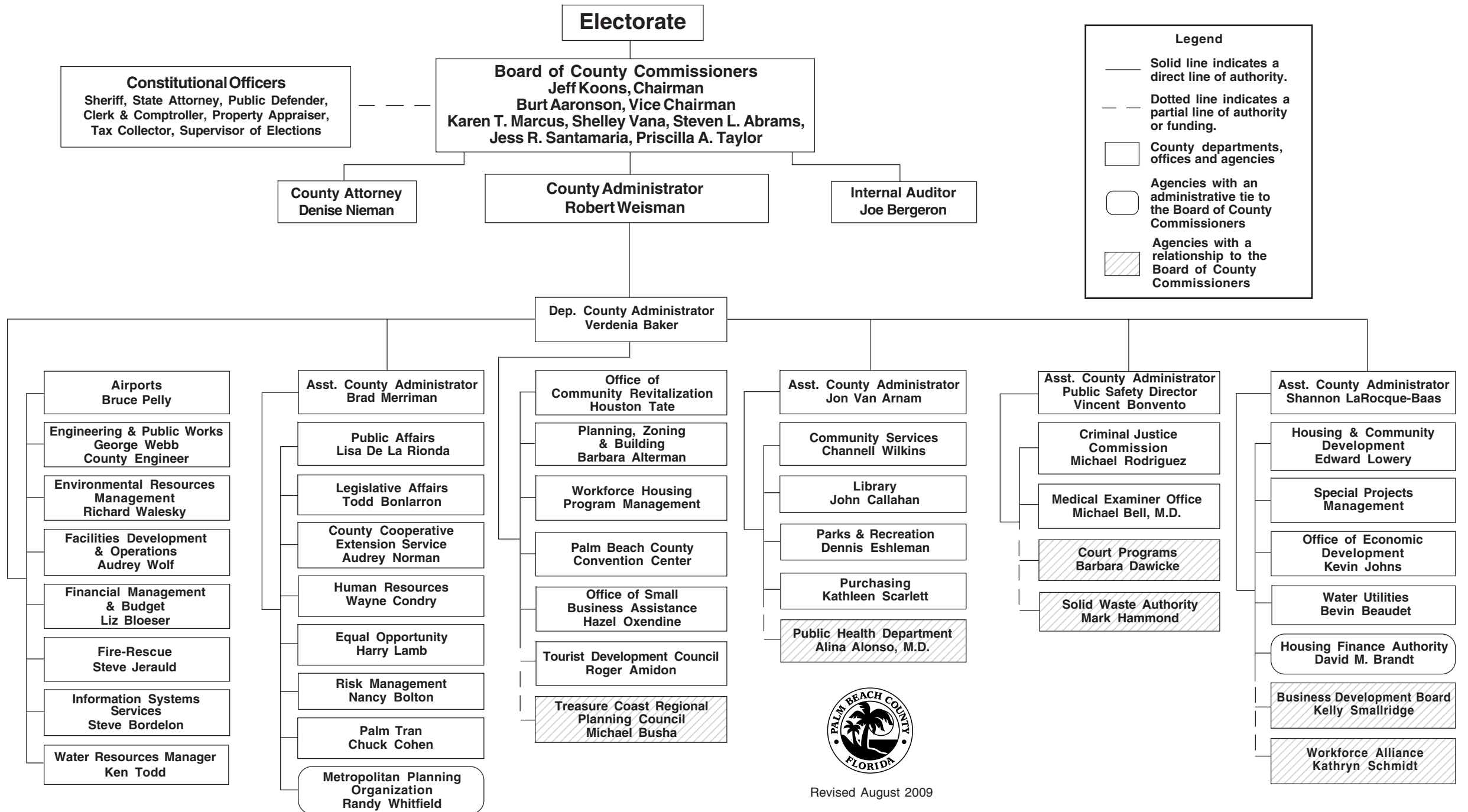
SECTION III Salary Ranges

General Pay Grades and Pay Ranges	91
Executive Pay Grades and Pay Ranges	101

SECTION IV Fire Rescue Pay Schedule

Alphabetical Listing of Bargaining Unit Job Classification Titles	103
Bargaining Unit Salary Schedule for October & April ATB	105

Palm Beach County Board of County Commissioners Organizational Structure





PALM BEACH COUNTY PAY PLAN
LISTING OF PAY PERIODS & PAY DAYS FOR FISCAL 2009 - 2010

<u>Pay Periods</u>						<u>Pay Days</u>	
1.	September	26	-	October	09	October	16, 2009
2.	October	10	-	October	23	October	30, 2009
3.	October	24	-	November	06	November	13, 2009
4.	November	07	-	November	20	November	27, 2009
5.	November	21	-	December	04	December	11, 2009
6.	December	05	-	December	18	December	25, 2009
7.	December	19	-	January	01	January	08, 2010
8.	January	02	-	January	15	January	22, 2010
9.	January	16	-	January	29	February	05, 2010
10.	January	30	-	February	12	February	19, 2010
11.	February	13	-	February	26	March	05, 2010
12.	February	27	-	March	12	March	19, 2010
13.	March	13	-	March	26	April	02, 2010
14.	March	27	-	April	09	April	16, 2010
15.	April	10	-	April	23	April	30, 2010
16.	April	24	-	May	07	May	14, 2010
17.	May	08	-	May	21	May	28, 2010
18.	May	22	-	June	04	June	11, 2010
19.	June	05	-	June	18	June	25, 2010
20.	June	19	-	July	02	July	09, 2010
21.	July	03	-	July	16	July	23, 2010
22.	July	17	-	July	30	August	06, 2010
23.	July	31	-	August	13	August	20, 2010
24.	August	14	-	August	27	September	03, 2010
25.	August	28	-	September	10	September	17, 2010
26.	September	11	-	September	24	October	01, 2010



**PALM BEACH COUNTY PAY PLAN
HOLIDAY SCHEDULE 2009 - 2010**

Holiday Name		Day
1. Columbus Day (2nd Monday in Oct)	Monday, October 12, 2009
2. Veterans Day	Wednesday, November 11, 2009
3. Thanksgiving Day	Thursday, November 26, 2009
4. Floating Holiday	Friday, November 27, 2009
5. Floating Holiday	Thursday, December 24, 2009
6. Christmas Day	Friday, December 25, 2009
7. New Year's Day	Friday, January 1, 2010
8. Martin Luther King, Jr. Day (3rd Monday in January)	Monday, January 18, 2010
9. President's Day (3rd Monday in February)	Monday, February 15, 2010
10. Memorial Day (last Monday in May)	Monday, May 31, 2010
11. Independence Day	Monday, July 5, 2010
12. Labor Day (1st Monday in September)	Monday, September 6, 2010



PAY POLICIES FORTHCOMING



JOB CLASSIFICATION TITLES



PALM BEACH COUNTY PAY PLAN

JOB CLASSIFICATION TITLE	SPEC #	JOB CLASSIFICATION TITLE	SPEC #
911 COORDINATOR	06412	AGENCY CONSULTANT	00994
911 SPECIALIST	06402	AGENDA COORDINATOR	00424
A/C & REFRIGERATION SPECIALIST I	04133	AGRICULTURAL ECONOMIC DEVELOPMENT COORDINATOR	03515
A/C & REFRIGERATION SPECIALIST II	04134	AIR QUALITY TECHNICIAN	09359
ABSTRACTOR SUPERVISOR	01023	AIRPORTS S/DBE MANAGER	07029
ABSTRACTOR/TITLE EXAMINER	01020	AIRPORTS COMMUNICATIONS SPECIALIST	07011
ACCESS MANAGER	05036	AIRPORTS CUSTODIAL CONTRACT COORDINATOR	07016
ACCESS TECHNICIAN	07008	AIRPORTS GENERAL AVIATION MANAGER	07026
ACCOUNTANT	00612	AIRPORTS OPERATIONS OFFICER	07013
ADDRESSING TECHNICIAN	01382	AIRPORTS OPERATIONS SUPERVISOR	07012
ADMINISTRATIVE ASSISTANT	00400	AIRPORTS PARKING CONTRACT COORDINATOR	07015
ADMINISTRATIVE LEGAL ASSISTANT	06021	AIRPORTS SECURITY SUPERVISOR	07007
ADMINISTRATIVE SECRETARY	00145	AIRPORTS STRIPING TECHNICIAN	04101
ADMINISTRATOR MORIKAMI PARK	02131	AIRPORTS TECHNICAL SERVICES COORDINATOR	07017
AGENCY ANALYST PROGRAMMER	00910A	ANALYST PROGRAMMER	00986



PALM BEACH COUNTY PAY PLAN

JOB CLASSIFICATION TITLE	SPEC #	JOB CLASSIFICATION TITLE	SPEC #
ANIMAL BITE COORDINATOR	06220	AQUATICS SUPERVISOR	02116
ANIMAL CARE & CONTROL FACILITY COORDINATOR	06216	ARCHITECTURAL FIELD REPRESENTATIVE I	01816
ANIMAL CARE & CONTROL FIELD SUPERVISOR	06226	ARCHITECTURAL FIELD REPRESENTATIVE II	01817
ANIMAL CARE & CONTROL OPERATIONS MANAGER	06245	ASSISTANT AIRPORTS PROPERTIES MANAGER	07025
ANIMAL CARE COORDINATOR	06210	ASSISTANT BRIDGETENDER SUPERVISOR	09017
ANIMAL CARE SPECIALIST	06200	ASSISTANT COMMUNITY CENTER MANAGER	03034
ANIMAL CARE VETERINARY ASSISTANT	06205	ASSISTANT COUNTY ADMINISTRATOR	00423
ANIMAL CONTROL OFFICER I	06207	ASSISTANT COUNTY ATTORNEY I	06026
ANIMAL CONTROL OFFICER II	06212	ASSISTANT COUNTY ATTORNEY II	06027
ANIMAL SERVICES REPRESENTATIVE	06213	ASSISTANT COUNTY ATTORNEY III	06028
APPRENTICE I	04135	ASSISTANT COUNTY ENGINEER	01098
APPRENTICE II	04136	ASSISTANT DEPUTY OF INSPECTIONS	01338
APPRENTICE III	04137	ASSISTANT DEPUTY OF LARGE PROJECTS	01336
APPRENTICE IV	04138	ASSISTANT DEPUTY OF PLAN REVIEW	01337
AQUATIC PROGRAMS COORDINATOR	02120	ASSISTANT DIRECTOR ANIMAL CARE & CONTROL	06242



PALM BEACH COUNTY PAY PLAN

JOB CLASSIFICATION TITLE	SPEC #	JOB CLASSIFICATION TITLE	SPEC #
ASSISTANT DIRECTOR BUDGET	00615	ASSOCIATE MEDICAL EXAMINER	08112
ASSISTANT DIRECTOR FINANCE & ADMINISTRATION	09344	AUDIO/VISUAL TECHNICIAN	00205
ASSISTANT DIRECTOR HEAD START	03330	AUDITOR	01530
ASSISTANT DIRECTOR HUMAN RESOURCES	00531	AUTOMOTIVE SUPPORT SPECIALIST I	04205
ASSISTANT DIRECTOR LIBRARY	02249	AUTOMOTIVE SUPPORT SPECIALIST II	04206
ASSISTANT DIRECTOR PALM TRAN	00473	AUTOMOTIVE TECHNICIAN I	04210
ASSISTANT DIRECTOR PARKS & RECREATION	02141	AUTOMOTIVE TECHNICIAN II	04211
ASSISTANT DIRECTOR PROPERTY & REAL ESTATE MANAGEMENT	01827	BATTALION CHIEF	07440
ASSISTANT DIRECTOR ROAD & BRIDGE	09215	BEHAVIORAL SPECIALIST	03353
ASSISTANT DIRECTOR TRAFFIC ENGINEERING	01125	BINDERY WORKER	04426
ASSISTANT DIRECTOR WATER UTILITIES	09357	BRANCH PUBLIC SERVICE COORDINATOR	02243
ASSISTANT GOLF FACILITY MANAGER	02164	BRIDGE INSPECTION SUPERVISOR	01003
ASSISTANT MANAGER EMERGENCY MANAGEMENT OPERATIONS	06304	BRIDGE INSPECTOR I	01000
ASSISTANT PUBLIC WORKS SUPERINTENDENT	09205	BRIDGE INSPECTOR II	01001
ASSISTANT VETERANS' SERVICES OFFICER	03050	BRIDGE MECHANIC I	04140



PALM BEACH COUNTY PAY PLAN

JOB CLASSIFICATION TITLE	SPEC #	JOB CLASSIFICATION TITLE	SPEC #
BRIDGE MECHANIC II	04141	BUYER	00335
BRIDGE REPAIRER	09025	BUYER ASSISTANT	00331
BRIDGETENDER	09015	CABLE TELEVISION COORDINATOR	01400
BRIDGETENDER SUPERVISOR	09018	CABLE TELEVISION INSPECTOR	01401
BROADCAST FACILITY COORDINATOR	01403	CAMPGROUND ATTENDANT	02009
BROADCAST NETWORK ADMINISTRATOR	01406	CAPITAL IMPROVEMENTS PROJECT SPECIALIST	03418
BUILDING CONSTRUCTION INSPECTOR I	01314	CARPENTER	04110
BUILDING CONSTRUCTION INSPECTOR II	01315	CASE COORDINATOR	03107
BUILDING CONSTRUCTION INSPECTOR III	01316	CASE MANAGER I	03057
BUILDING DIVISION BRANCH SUPERVISOR	01310	CASE MANAGER II	03058
BUILDING DIVISION OPERATIONS MANAGER	01335	CASE MANAGER III	03059
BUILDING PERMIT TECHNICIAN I	01360	CASE MANAGER TRAINEE	03056
BUILDING PERMIT TECHNICIAN II	01361	CASEWORK SUPERVISOR	03009
BUILDING PERMIT TECHNICIAN III	01362	CASH ACCOUNTING CLERK	00600
BUSINESS & COMMUNITY AGREEMENTS MANAGER	01815	CERTIFIED PLAYGROUND SAFETY INSPECTOR	02001



PALM BEACH COUNTY PAY PLAN

JOB CLASSIFICATION TITLE	SPEC #	JOB CLASSIFICATION TITLE	SPEC #
CHEMICAL SPRAY TECHNICIAN	02008	CHIEF SECURITY SUPERVISOR	05035
CHEMIST	09341	CHIEF STRUCTURAL INSPECTOR	01320
CHIEF ASSISTANT COUNTY ATTORNEY	06032	CHIEF WATER/WASTEWATER PLANT OPERATOR	09323
CHIEF BROADCAST FACILITIES COORDINATOR	01411	CHILD DEVELOPMENT ASSISTANT	03305
CHIEF COMMUNICATOR	00238	CHILD DEVELOPMENT ASSOCIATE I	03310
CHIEF COMMUNITY BASED CLINICAL SERVICES	03140	CHILD DEVELOPMENT ASSOCIATE II	03313
CHIEF CONSTRUCTION COORDINATOR	01012	CJIS/CIVIS PROJECT COORDINATOR	00926
CHIEF ELECTRICAL INSPECTOR	01319	CJIS/CIVIS SYSTEMS ADMINISTRATOR	00929
CHIEF MECHANICAL INSPECTOR	01321	CLERICAL SPECIALIST	00103
CHIEF OF CLINICAL SERVICES EDUCATION & TRAINING	03144	CLERK TYPIST	00110
CHIEF OF PARKS SECURITY	02019	CLINIC MANAGER	06235
CHIEF PLANNER	01223	CLINICAL SERVICES PROGRAM SPECIALIST	03994
CHIEF PLUMBING INSPECTOR	01318	COASTAL GEOLOGIST	01947
CHIEF PSYCHOLOGIST	03139	CODE ENFORCEMENT OFFICER	01365
CHIEF RESIDENTIAL CLINICAL SERVICES	03142	CODES PRODUCT & TRAINING COORDINATOR	01309



PALM BEACH COUNTY PAY PLAN

JOB CLASSIFICATION TITLE	SPEC #	JOB CLASSIFICATION TITLE	SPEC #
CODES PRODUCT & TRAINING SUPERVISOR	01304	COMMUNITY DEVELOPMENT PROJECT COORDINATOR	03409
COLLECTIONS COORDINATOR	00614	COMMUNITY DEVELOPMENT PROJECT SPECIALIST	03420
COMMERCIAL EQUIPMENT TECHNICIAN	04130	COMMUNITY SERVICES PROGRAM EVALUATOR	03181
COMMISSION SECRETARY	00135	COMMUNITY SERVICES SUPERVISOR	03993
COMMUNICATION SYSTEMS PLANNER	00251	COMPLIANCE INVESTIGATOR I	01611
COMMUNICATIONS NETWORK AND SYSTEMS ANALYST	00258	COMPLIANCE INVESTIGATOR II	01612
COMMUNICATIONS SPECIALIST	00403	COMPUTER OPERATOR	00917
COMMUNICATOR (BARGAINING UNIT)	00237	COMPUTER SPECIALIST I	00904
COMMUNICATOR (NON BARGAINING UNIT)	00239	COMPUTER SPECIALIST II	00908
COMMUNITY ACTION LIHEAP SUPERVISOR	03235	CONCESSION SUPERVISOR	02160
COMMUNITY ACTION PROGRAM COORDINATOR	03234	CONSTRUCTION COORDINATION AIDE	01008
COMMUNITY ACTION SPECIALIST	03231	CONSTRUCTION COORDINATOR	01009
COMMUNITY ACTION SPECIALIST III	03232	CONSTRUCTION INSPECTIONS COORDINATOR	01317
COMMUNITY CENTER MANAGER	03035	CONSTRUCTION PLANS EXAMINER I	01305
COMMUNITY COURT COORDINATOR	03990	CONSTRUCTION PLANS EXAMINER II	01306



PALM BEACH COUNTY PAY PLAN

JOB CLASSIFICATION TITLE	SPEC #	JOB CLASSIFICATION TITLE	SPEC #
CONSTRUCTION PLANS EXAMINER III	01308	COOK II	05111
CONSTRUCTION PROJECT SPECIALIST	01007	COOK III	05112
CONSTRUCTION SERVICES COORDINATOR	01327	COORDINATOR - FIXED ASSETS INVENTORIES	01724
CONSULTANT CONTRACT MANAGEMENT SPECIALIST	01029	COORDINATOR - INFORMATION SYSTEMS SERVICES	00990
CONSUMER AFFAIRS COMPLIANCE OFFICER	03607	COORDINATOR ELDER JUSTICE SERVICES	06039
CONSUMER AFFAIRS INVESTIGATOR	03600	COORDINATOR ISS PHYSICAL ASSETS	00966
CONTRACT ANALYST	01770	COORDINATOR SPECIAL EVENTS & PROMOTIONS	00405
CONTRACT COMPLIANCE SPECIALIST	00332	COUNTY ADMINISTRATOR	00430
CONTRACT MANAGEMENT CLERK	09342	COUNTY ARCHEOLOGIST	01201
CONTRACT MANAGEMENT SPECIALIST	00336	COUNTY ATTORNEY	06034
CONTRACT MANAGER	00451	COUNTY COMMISSION ADMINISTRATIVE ASSISTANT	00420
CONTRACTORS CERTIFICATION COORDINATOR	01354	COUNTY COMMISSION RECEPTIONIST	00132
CONTRACTORS CERTIFICATION FIELD INVESTIGATOR	01352	COUNTY COMMISSIONER	00435
CONTRACTORS CERTIFICATION SPECIALIST	01350	COUNTY COURT CASE MANAGER	06064
CONTRACTS/GRANTS COORDINATOR	02027	COUNTY ENGINEER	01099



PALM BEACH COUNTY PAY PLAN

JOB CLASSIFICATION TITLE	SPEC #	JOB CLASSIFICATION TITLE	SPEC #
COUNTY EXTENSION AGENT	03500	CUSTODY EVALUATION SPECIALIST	03133
COUNTY WATER RESOURCES MANAGER	00431	CUSTOMER RELATIONS COORDINATOR	06244
COUNTYWIDE GIS COORDINATOR	00997	CUSTOMER REPRESENTATIVE - ISS	00931
COURT ANALYST	06063	CUSTOMER SERVICE REPRESENTATIVE	09307
COURT CASE ADVISOR	03995	CUSTOMER SERVICE SPECIALIST	09301
COURT PROGRAM SPECIALIST	06059	CUSTOMER SERVICE SPECIALIST II	09393
CRIME PREVENTION PROJECT SPECIALIST	03977	CUSTOMER SERVICE SUPERVISOR	09304
CRIMINAL JUSTICE ANALYST	03975	DATA ENTRY CLERK	00900
CRIMINAL JUSTICE PROGRAM DEVELOPMENT SPECIALIST	03982	DATA PROCESSOR I	00902
CROSS CONNECTION CONTROL COORDINATOR	09366	DATA PROCESSOR II	00903
CURATOR MORIKAMI MUSEUM	02133	DATABASE ADMINISTRATOR	00964
CURATOR OF JAPANESE ART	02132	DELEGATE AGENCY COORDINATOR	03332
CURATOR/DIRECTOR MOUNTS BOTANICAL GARDENS	03507	DEPUTY BUILDING OFFICIAL	01339
CURRICULUM SPECIALIST	03324	DEPUTY CHIEF	07535
CUSTODIAL WORKER	05001	DEPUTY COUNTY ADMINISTRATOR	00422



PALM BEACH COUNTY PAY PLAN

JOB CLASSIFICATION TITLE	SPEC #	JOB CLASSIFICATION TITLE	SPEC #
DEPUTY COUNTY ENGINEER	01092	DIRECTOR ANIMAL CARE & CONTROL	06241
DEPUTY DIRECTOR AIRPORTS BUSINESS AFFAIRS	07031	DIRECTOR APPLICATION SERVICES	00989
DEPUTY DIRECTOR AIRPORTS FINANCE & ADMIN	07027	DIRECTOR AQUATICS	02165
DEPUTY DIRECTOR AIRPORTS OPERATIONS & MAINTENANCE	07019	DIRECTOR BUDGET	00616
DEPUTY DIRECTOR AIRPORTS PLANNING & COMMUNITY AFFAIRS	07005	DIRECTOR BUILDING	01340
DEPUTY DIRECTOR ENVIRONMENTAL RESOURCES MANAGEMENT	01946	DIRECTOR CAPITAL IMPROVEMENTS	01801
DEPUTY DIRECTOR ISS	00995A	DIRECTOR CODE ENFORCEMENT	01371
DEPUTY DIRECTOR WATER UTILITIES	09382	DIRECTOR COMMUNITY SERVICES	03180
DESKTOP ADMINISTRATOR	00945A	DIRECTOR COMPUTING PLATFORMS DIVISION	00993A
DIRECTOR ADMINISTRATIVE SERVICES	01097	DIRECTOR CONSTRUCTION COORDINATION	01013
DIRECTOR AIRPORTS	07030	DIRECTOR CONSUMER AFFAIRS	03610
DIRECTOR AIRPORTS MAINTENANCE	07033	DIRECTOR CONTRACT DEVELOPMENT & CONTROL	01775
DIRECTOR AIRPORTS NOISE ABATEMENT/COMMUNITY AFFAIRS	07003	DIRECTOR CONTRACTORS CERTIFICATION	01355
DIRECTOR AIRPORTS PLANNING	07028	DIRECTOR COUNTY EXTENSION SERVICE	03520
DIRECTOR AIRPORTS PROPERTIES	07032	DIRECTOR ECONOMIC DEVELOPMENT	00427



PALM BEACH COUNTY PAY PLAN

JOB CLASSIFICATION TITLE	SPEC #	JOB CLASSIFICATION TITLE	SPEC #
DIRECTOR ELECTRONIC SERVICES & SECURITY	00250	DIRECTOR FLEET MANAGEMENT	04227
DIRECTOR EMERGENCY MANAGEMENT	06316	DIRECTOR HEAD START	03329
DIRECTOR ENGINEERING SERVICES	01070	DIRECTOR HOUSING & COMMUNITY DEVELOPMENT	03426
DIRECTOR ENVIRONMENTAL	01949	DIRECTOR HUMAN RESOURCES	00530
DIRECTOR ENVIRONMENTAL RESOURCES MANAGEMENT	01950	DIRECTOR HUMAN SERVICES	03170
DIRECTOR EQUAL OPPORTUNITY	01600	DIRECTOR INFORMATION SYSTEMS SERVICES	00995
DIRECTOR FACILITIES DEVELOPMENT & OPERATIONS	01820	DIRECTOR JUSTICE SERVICES	06045
DIRECTOR FACILITIES MANAGEMENT	05056	DIRECTOR LAND DEVELOPMENT	01075
DIRECTOR FACILITIES OPERATIONS	01821	DIRECTOR LEGISLATIVE AFFAIRS	00411
DIRECTOR FACILITIES SERVICES	01818	DIRECTOR LIBRARY	02250
DIRECTOR FINANCE & ADMINISTRATION	09343	DIRECTOR LIBRARY FINANCE & ADMINISTRATION	02244
DIRECTOR FINANCE & PLANNING	07545	DIRECTOR LINE OPERATIONS & MAINTENANCE	09353
DIRECTOR FINANCIAL & SUPPORT SERVICES	01948	DIRECTOR METROPOLITAN PLANNING & ORGANIZATION	01230
DIRECTOR FINANCIAL MANAGEMENT	01702	DIRECTOR MOSQUITO CONTROL	01956
DIRECTOR FIRE RESCUE FLEET MAINTENANCE	07505	DIRECTOR NETWORK SERVICES DIVISION	00987A



PALM BEACH COUNTY PAY PLAN

JOB CLASSIFICATION TITLE	SPEC #	JOB CLASSIFICATION TITLE	SPEC #
DIRECTOR OF AIRPORTS OPERATIONS	07018	DIRECTOR PUBLIC SAFETY	06550
DIRECTOR OFFICE OF COMMUNITY REVITALIZATION	00432	DIRECTOR PURCHASING	00341
DIRECTOR OFFICE OF FINANCIAL MANAGEMENT AND BUDGET	01701	DIRECTOR RECREATION SERVICES	02130
DIRECTOR OFFICE OF SMALL BUSINESS ASSISTANCE	01617	DIRECTOR REGULATORY COMPLIANCE	09381
DIRECTOR PALM TRAN	00475	DIRECTOR RISK MANAGEMENT	00835
DIRECTOR PARKS & RECREATION	02140	DIRECTOR ROAD & BRIDGE	09216
DIRECTOR PARKS FINANCIAL & SUPPORT SERVICES	02142	DIRECTOR ROADWAY PRODUCTION	01088
DIRECTOR PARKS OPERATIONS	02139	DIRECTOR SENIOR SERVICES	03039
DIRECTOR PLANNING	01225	DIRECTOR SPECIAL FACILITIES & BEACHES	02134
DIRECTOR PLANNING & QUALITY ASSURANCE	00999	DIRECTOR TECHNICAL SERVICES	00998
DIRECTOR PLANNING, ZONING & BUILDING	01390	DIRECTOR TELECOMMUNICATIONS	00987
DIRECTOR PLANNING, ZONING & BUILDING ADMINISTRATION	01385	DIRECTOR TOURIST DEVELOPMENT	00421
DIRECTOR PLANT OPERATIONS & MAINTENANCE	09340	DIRECTOR TRAFFIC ENGINEERING	01126
DIRECTOR PROPERTY & REAL ESTATE MANAGEMENT	01825	DIRECTOR UTILITIES ENGINEERING	09347
DIRECTOR PUBLIC AFFAIRS	00410	DIRECTOR VICTIM SERVICES & SUPPORT	03984



PALM BEACH COUNTY PAY PLAN

JOB CLASSIFICATION TITLE	SPEC #	JOB CLASSIFICATION TITLE	SPEC #
DIRECTOR WATER UTILITIES	09350	EARLY HEAD START SUPERVISOR	03334
DIRECTOR YOUTH AFFAIRS	03160	ECONOMIC DEVELOPMENT ANALYST	00436
DIRECTOR ZONING	01380	ECONOMIC DEVELOPMENT ASSISTANT	00437
DISABILITY SERVICES COORDINATOR	03327	ECONOMIC DEVELOPMENT LOAN MANAGER	00438
DISADVANTAGED BUSINESS ENTERPRISE PROGRAM TECHNICIAN	07021	ECONOMIC DEVELOPMENT SPECIALIST	00425
DISASTER RECOVERY SPECIALIST	03428	EDUCATION COORDINATOR	03340
DISTRICT OCEAN RESCUE SUPERVISOR	02103	ELDER JUSTICE COUNSELOR	06038
DIVISION CHIEF	07530	ELECTRICIAN	04116
DOMESTIC VIOLENCE INTAKE SPECIALIST	06052	ELECTRONIC PERMIT SPECIALIST	01364
DREDGE OPERATOR	09035	ELECTRONICS SYSTEMS PLANNER	00255
DRI CAPITAL IMPROVEMENTS PROJECT SPECIALIST	03429	ELECTRONICS TECHNICIAN	00242
DROWNING PREVENTION COALITION COORDINATOR	06560	EMERGENCY MANAGEMENT COMMUNICATIONS SPECIALIST	00243
DROWNING PREVENTION COALITION MANAGER	06563	EMERGENCY MANAGEMENT PROGRAM COORDINATOR	06300
EARLY CHILDHOOD DEVELOPMENT SERVICES SUPERVISOR	03322	EMERGENCY MANAGEMENT SPECIALIST	06308
EARLY HEAD START FAMILY SERVICES COORDINATOR	03337	EMERGENCY MEDICAL SERVICES SPECIALIST	06400



PALM BEACH COUNTY PAY PLAN

JOB CLASSIFICATION TITLE	SPEC #	JOB CLASSIFICATION TITLE	SPEC #
EMPLOYEE ASSISTANCE PROGRAM COORDINATOR	00820	EQUESTRIAN FACILITY MANAGER	02154
EMPLOYEE ASSISTANCE PROGRAM SPECIALIST	00821	EQUIPMENT ANALYST	04208
ENTERPRISE CENTER OPERATOR	00918	EQUIPMENT MECHANIC	04214
ENTERPRISE SHIFT SUPERVISOR	00922	ERSEA COMMUNITY PARTNERSHIP COORDINATOR	03351
ENVIRONMENTAL ANALYST	01942	ERSEA SUPERVISOR	03341
ENVIRONMENTAL MANAGER	01945	EVIDENCE/RECORD SPECIALIST	07515
ENVIRONMENTAL PROGRAM SUPERVISOR	01944	EXECUTIVE ASSISTANT I	00155
ENVIRONMENTAL TECHNICIAN I	01936	EXECUTIVE ASSISTANT II	00140
ENVIRONMENTAL TECHNICIAN II	01938	EXECUTIVE ASSISTANT III	00429
ENVIRONMENTALIST I	01940	EXECUTIVE ASSISTANT TO FIRE RESCUE ADMINISTRATOR	07540
ENVIRONMENTALIST II	01941	EXECUTIVE DIRECTOR CRIMINAL JUSTICE COMMISSION	03985
EQUAL EMPLOYMENT COMPLIANCE SPECIALIST I	00502	EXECUTIVE DIRECTOR HOUSING FINANCE AUTHORITY	00480
EQUAL EMPLOYMENT COMPLIANCE SPECIALIST II	00523	EXECUTIVE DIRECTOR PBC DELEGATION OFFICE	00409
EQUAL OPPORTUNITY SPECIALIST	01604	EXECUTIVE SECRETARY TO THE COUNTY ATTORNEY	06019
EQUAL OPPORTUNITY TECHNICIAN	01613	EXTENSION AGENT	03505



PALM BEACH COUNTY PAY PLAN

JOB CLASSIFICATION TITLE	SPEC #	JOB CLASSIFICATION TITLE	SPEC #
FACILITIES CONTRACT EVALUATOR	05017	FINANCIAL ANALYST III	00624
FACILITIES EVALUATOR	01812	FIRE RESCUE ADMINISTRATOR	07550
FACILITIES MANAGER	05050	FIRE RESCUE PAYROLL & LTD COORDINATOR	07544
FACILITIES/SYSTEMS PROJECT MANAGER	01808	FISCAL DIRECTOR	00627
FAMILY & PARENT SERVICES SUPERVISOR	03348	FISCAL MANAGER I	00625
FAMILY COUNSELOR	03124	FISCAL MANAGER II	00626
FAMILY SERVICES COORDINATOR	03303	FISCAL SPECIALIST I	00602
FAMILY SERVICES SPECIALIST I	03319	FISCAL SPECIALIST II	00603
FAMILY SERVICES SPECIALIST II	03320	FISCAL SPECIALIST III	00604
FAMILY SERVICES SPECIALIST III	03352	FIXED ASSETS MANAGER	01725
FAMILY THERAPIST	03126	FIXED ASSETS SPECIALIST - INVENTORY COORDINATION	01721
FARMWORKER COUNSELOR	03210	FIXED ASSETS SPECIALIST - SURPLUS OPERATIONS	01720
FIELD OFFICE COORDINATOR	09201	FLEET MANAGEMENT SUPPORT SERVICES SUPERVISOR	04225
FINANCIAL ANALYST I	00620	FOOD SERVICE MANAGER	05120
FINANCIAL ANALYST II	00622	FORENSIC INVESTIGATOR I	08107



PALM BEACH COUNTY PAY PLAN

JOB CLASSIFICATION TITLE	SPEC #	JOB CLASSIFICATION TITLE	SPEC #
FORENSIC INVESTIGATOR II	08104	GOLF OPERATIONS SUPERVISOR	02149
FORENSIC SUPERVISOR	08109	GRANT/BUDGET ANALYST	01771
FORENSIC TECHNICIAN	08105	GRAPHICS DESIGNER I	04422
FUEL SYSTEM COORDINATOR	04224	GRAPHICS DESIGNER II	04425
GARDENER	03510	GRAPHICS MANAGER	04430
GENERAL MAINTENANCE MECHANIC	04103	GRAPHICS PRODUCTION COORDINATOR	04427
GIS ANALYST	04416	GROUP INSURANCE COORDINATOR	00826
GIS SUPPORT SPECIALIST	04418	GROUP INSURANCE SPECIALIST	00825
GIS/CADD TECHNICIAN I	04412	GUARDIAN AD LITEM TRAINING COORDINATOR	06037
GIS/CADD TECHNICIAN II	04414	HANDICAPPED ACCESSIBILITY SPECIALIST	01602
GLADES UTILITY AUTHORITY GENERAL MANAGER	09500	HEAD START CENTER MANAGER I	03345
GOLF ATTENDANT	02135	HEAD START CENTER MANAGER II	03346
GOLF COURSE MANAGER	02136	HEAD START CENTER MANAGER III	03347
GOLF FACILITY MANAGER	02166	HEAD START FIELD OPERATIONS SUPERVISOR	03312
GOLF MAINTENANCE SUPERVISOR	02163	HEAD START TRAINING SPECIALIST	03339



PALM BEACH COUNTY PAY PLAN

JOB CLASSIFICATION TITLE	SPEC #	JOB CLASSIFICATION TITLE	SPEC #
HEALTH SERVICES COORDINATOR	03336	HUMAN SERVICES PROGRAM COORDINATOR	03023
HEALTH SERVICES SUPERVISOR	03321	HUMAN SERVICES QUALITY ASSURANCE COORDINATOR	03008
HOME PROGRAM COORDINATOR	03419	HYDRAULIC & HYDROLOGIC MODELING ANALYST	09387
HOME PROGRAM SPECIALIST	03406	HYDROGEOLOGIST	01930
HOMELESS PROGRAM & CONTRACT MANAGER	03040	IMPACT FEE MANAGER	01704
HORTICULTURAL SUPERVISOR	03506	INDUSTRIAL ELECTRICIAN	04118
HORTICULTURIST	03512	INDUSTRIAL HYGIENIST	00808
HOUSING FINANCE AUTHORITY SECRETARY	00482	INFILTRATION & INFLOW TECHNICIAN APPRENTICE	09397
HUMAN RESOURCES INFORMATION SYSTEMS SPECIALIST	00503	INFILTRATION & INFLOW TECHNICIAN I	09367
HUMAN RESOURCES SPECIALIST I	00500	INFILTRATION & INFLOW TECHNICIAN II	09368
HUMAN RESOURCES SPECIALIST II	00510	INFORMATION SYSTEMS AUDITOR	00970
HUMAN RESOURCES SPECIALIST III	00550	INFORMATION TECHNOLOGY MANAGER	00996
HUMAN RESOURCES SPECIALIST IV	00552	INSPECTIONS SCHEDULER I	01300
HUMAN RESOURCES TECHNICIAN	00506	INSPECTIONS SCHEDULER II	01301
HUMAN SERVICES OPERATIONS SUPERVISOR	03010	INSPECTIONS SCHEDULER SUPERVISOR	01302



PALM BEACH COUNTY PAY PLAN

JOB CLASSIFICATION TITLE	SPEC #	JOB CLASSIFICATION TITLE	SPEC #
INSTRUMENTATION TECHNICIAN	00257	LABORATORY FIELD SAMPLING TECHNICIAN	09396
INSURANCE CLAIMS SPECIALIST	00828	LABORATORY INFORMATION MANAGEMENT SYSTEM(LIMS) ADMINI:	09384
INTELLIGENT TRANSPORTATION SYSTEM SUPERVISOR	01080	LABORATORY MANAGER	09335
INTELLIGENT TRANSPORTATION SYSTEM TECHNICIAN	01081	LABORATORY QUALITY ASSURANCE OFFICER	09332
INTERNAL AUDIT MANAGER	01526	LABORATORY TECHNICIAN	09334
INTERNAL AUDITOR	01520	LAND MANAGEMENT ASSISTANT	01960
IRRIGATION TECHNICIAN	04106	LAND SURVEYOR - REGISTERED	01061
JIS PROJECT MANAGER	00975	LAND SURVEYOR- NON REGISTERED	01060
JIS SOFTWARE TRAINING SPECIALIST	00927	LANDSCAPE ARCHITECT	02035
JTPA PROGRAM COORDINATOR	03220	LAW LIBRARY ASSOCIATE I	06015
JUVENILE ALTERNATIVE SANCTIONS COORDINATOR	03131	LAW LIBRARY ASSOCIATE II	06016
JUVENILE DOMESTIC VIOLENCE MEDIATION PROGRAM COORD	06044	LEAD CLERK	00104
JUVENILE RESIDENCE TECHNICIAN	03103	LEGAL ASSISTANT I	06024
JUVENILE VICTIM ASSISTANCE INVESTIGATOR	03122	LEGAL ASSISTANT II	06023
LABORATORY ASSISTANT	09336	LEGAL ASSISTANT III	06020



PALM BEACH COUNTY PAY PLAN

JOB CLASSIFICATION TITLE	SPEC #	JOB CLASSIFICATION TITLE	SPEC #
LEGAL CLERK	03105	LIBRARY PAGE	02201
LEGAL SECRETARY	06022	LIBRARY TECHNICIAN	02220
LEGISLATIVE COORDINATOR	00413	LIBRARY TRAINING & TECHNICAL ASSISTANCE SPECIALIST	02223
LIBRARIAN I	02230	LIBRARY TRAINING & TECHNICAL ASSISTANCE SUPERVISOR	02226
LIBRARIAN II	02231	LICENSED FAMILY THERAPIST	03127
LIBRARIAN III	02235	LICENSED PRACTICAL NURSE	08010
LIBRARIAN IV	02237	LICENSED THERAPY COORDINATOR	03969
LIBRARIAN V	02239	LIFT STATION TECHNICIAN I	09329
LIBRARIAN TRAINEE	02228	LIFT STATION TECHNICIAN II	09330
LIBRARY ASSOCIATE DRIVER	02200	LOSS CONTROL COORDINATOR	00807
LIBRARY ASSOCIATE I	02202	LOSS CONTROL SPECIALIST	00805
LIBRARY ASSOCIATE II	02203	LOSS CONTROL TECHNICIAN	00803
LIBRARY ASSOCIATE III	02204	MAINTENANCE SUPERVISOR	04150
LIBRARY ASSOCIATE IV	02206	MAINTENANCE WORKER I	09000
LIBRARY ASSOCIATE V	02207	MAINTENANCE WORKER II	09001



PALM BEACH COUNTY PAY PLAN

JOB CLASSIFICATION TITLE	SPEC #	JOB CLASSIFICATION TITLE	SPEC #
MAINTENANCE WORKER III	09002	MANAGER EMERGENCY MEDICAL SERVICES	06405
MAINTENANCE WORKER IV	09003	MANAGER ENTERPRISE CENTER	00923
MANAGEMENT & OPERATIONS CONSULTANT	01705	MANAGER EQUAL EMPLOYMENT OFFICE/FAIR HOUSING	01607
MANAGER	00992	MANAGER FACILITIES COMPLIANCE	01810
MANAGER AFFORDABLE HOUSING	03424	MANAGER FAIR EMPLOYMENT PROGRAMS	00525
MANAGER COMMUNITY PROJECTS	06231	MANAGER FIRE RESCUE CAPITAL PROJECTS	07522
MANAGER COMMUNITY RELATIONS & MARKETING	00406	MANAGER FIVE YEAR ROAD PROGRAM	01089
MANAGER COMPENSATION & RECORDS	00512	MANAGER HOUSING & REHABILITATION	03403
MANAGER CONSUMER AFFAIRS	03605	MANAGER INVENTORY MANAGEMENT & STORES	00320
MANAGER COURT SERVICES	06056	MANAGER LAND SURVEY	01064
MANAGER CRIMINAL JUSTICE ELECTRONIC SYSTEMS	00256	MANAGER LAW LIBRARY	06018
MANAGER CRIMINAL JUSTICE PROGRAMS	03981	MANAGER LOSS CONTROL	00806
MANAGER CUSTOMER RELATIONS	06214	MANAGER MEDICAL EXAMINER OPERATIONS	08110
MANAGER EDUCATION & GOVERNMENT STATION	01407	MANAGER NOISE ABATEMENT/COMMUNITY AFFAIRS	07034
MANAGER EMERGENCY MANAGEMENT OPERATIONS	06314	MANAGER OCCUPATIONAL HEALTH	00823



PALM BEACH COUNTY PAY PLAN

JOB CLASSIFICATION TITLE	SPEC #	JOB CLASSIFICATION TITLE	SPEC #
MANAGER OF WATER UTILITIES LEGISLATIVE AFFAIRS	09389	MANAGER TELECOMMUNICATIONS SECTION	00246
MANAGER PARKS & RECREATION SUPPORT SERVICES	02143	MANAGER TRAFFIC SIGNAL SYSTEM	01123
MANAGER PARKS ADMINISTRATIVE SERVICES	02029	MANAGER UTILITIES TECHNICAL SERVICES	09354
MANAGER PARKS SUPPORT SERVICES	02028	MANAGER UTILITY CUSTOMER SERVICE	09310
MANAGER PLANNING & ECONOMIC DEVELOPMENT	03422	MANAGER WATER UTILITIES DEPARTMENT SUPPORT SERVICES	09373
MANAGER PLANNING & EVALUATION	03177	MANAGER WORKERS' COMPENSATION	00810
MANAGER PROCUREMENT & PROJECT IMPLEMENTATION GROUP	05052	MASON	04119
MANAGER PROCUREMENT & STORES	00322	MATERIALS MANAGER	00317
MANAGER PROJECT COORDINATION	00407	MEDICAL EXAMINER	08114
MANAGER PROPERTY MANAGEMENT	01850	MEDICAL SECRETARY	08023
MANAGER PUBLIC INFORMATION SERVICES	02146	MENTAL HEALTH CASE MANAGER	06061
MANAGER REAL ESTATE	01849	MENTAL HEALTH COORDINATOR	03335
MANAGER RECRUITMENT & SELECTION	00527	MESSENGER	00325
MANAGER STREETScape	01006	METER READER	09305
MANAGER SURPLUS ASSETS DISPOSAL PROGRAM	01726	METER SERVICE TECHNICIAN	09375



PALM BEACH COUNTY PAY PLAN

JOB CLASSIFICATION TITLE	SPEC #	JOB CLASSIFICATION TITLE	SPEC #
MORGUE SUPERVISOR	08108	OCEAN LIFEGUARD	02101
MORIKAMI MUSEUM OPERATIONS SUPERVISOR	02138	OCEAN RESCUE CAPTAIN	02104
MOSQUITO CONTROL INSPECTOR	01957	OCEAN RESCUE CHIEF	02110
MOTOR EQUIPMENT OPERATOR II	09006	OCEAN RESCUE LIEUTENANT	02102
MOTOR EQUIPMENT OPERATOR III	09007	OCEAN RESCUE TRAINING OFFICER	02117
MOTOR EQUIPMENT OPERATOR IV	09008	OFFICE MANAGER	00150
NATURALIST	02148	OPERATIONS & MAINTENANCE SUPERINTENDENT	09349
NATURE CENTER MANAGER II	02152	OUTCOME & QUALITY ASSURANCE SUPERVISOR	03350
NETWORK ADMINISTRATOR	00944	OUTREACH & PUBLIC INFORMATION COORDINATOR	06306
NETWORK INTEGRATION SPECIALIST	00942	OUTREACH/DIRECT SERVICES WORKER	03032
NETWORK OPERATIONS TECHNICIAN	00931A	PAINTER	04104
NUTRITION COORDINATOR	03325	PALM TRAN MAINTENANCE MANAGER	00470
NUTRITION SERVICES COORDINATOR	03017	PARALEGAL I	06047
NUTRITION SERVICES SPECIALIST	03311	PARALEGAL III	06036
OCCUPATIONAL HEALTH NURSE	00822	PARENT INVOLVEMENT SPECIALIST	03309



PALM BEACH COUNTY PAY PLAN

JOB CLASSIFICATION TITLE	SPEC #	JOB CLASSIFICATION TITLE	SPEC #
PARK RANGER	02015	PARTS SPECIALIST	04223
PARK RANGER SUPERVISOR	02017	PARTY CHIEF	01057
PARK/POOL ATTENDANT	02012	PASSENGER DRIVER	09004
PARKING FACILITIES ATTENDANT I	05065	PERMIT COORDINATOR	01363
PARKING FACILITIES ATTENDANT II	05067	PLANNER I	01210
PARKING FACILITIES COORDINATOR	05070	PLANNER II	01211
PARKS & RECREATION DISTRICT MANAGER	02039	PLANNING ASSISTANT	03427
PARKS CONTRACT EVALUATOR	02031	PLANNING TECHNICIAN	01208
PARKS COORDINATOR	02167	PLANNING, ZONING & BUILDING SUPPORT SPECIALIST	01384
PARKS DISTRICT MANAGER	02022	PLUMBER	04113
PARKS DISTRICT OPERATIONS SUPERINTENDENT	02023	POOL LIFEGUARD	02100
PARKS OPERATIONS SUPERINTENDENT	02026	PRETRIAL SERVICES COUNSELOR I	06058
PARKS PLANNING & DESIGN SUPERINTENDENT	02038	PRETRIAL SERVICES COUNSELOR II	06060
PARKS RESOURCE SUPERINTENDENT	02024	PRETRIAL SERVICES INTERVIEWER	06057
PARKS SUPERVISOR	02020	PRINCIPAL PLANNER	01214



PALM BEACH COUNTY PAY PLAN

JOB CLASSIFICATION TITLE	SPEC #	JOB CLASSIFICATION TITLE	SPEC #
PRINCIPAL SITE PLANNER	01219	PROJECT COORDINATOR II	01072
PRINTER I	04420	PROJECT DESIGNER I	01073
PRINTER II	04421	PROJECT DESIGNER II	01074
PROCUREMENT & INVENTORY SYSTEM MANAGER	00340	PROJECT MANAGER	01813
PROCUREMENT COORDINATOR	00930	PROJECT REVIEWER I	01076
PROCUREMENT SPECIALIST	00147	PROJECT REVIEWER II	01077
PRODUCTION COORDINATOR	01408	PROPERTY & CASUALTY INSURANCE & CLAIMS MANAGER	00830
PRODUCTION SPECIALIST I	01405	PROPERTY SPECIALIST	01851
PRODUCTION SPECIALIST II	01409	PSYCHOLOGIST	03138
PRODUCTION SUPPORT SPECIALIST	00978A	PUBLIC ART PROGRAM ADMINISTRATOR	00450
PROFESSIONAL ENGINEER	01096	PUBLIC EDUCATION MANAGER	07503
PROGRAM ASSISTANT	03504	PUBLIC INFORMATION SPECIALIST	00402
PROGRAM MONITOR	03165	PUBLIC RELATIONS SPECIALIST	00404
PROGRAMMER	00982	PUBLIC WORKS CREW CHIEF	09101
PROJECT COORDINATOR I	01071	PUBLIC WORKS SUPERINTENDENT	09210



PALM BEACH COUNTY PAY PLAN

JOB CLASSIFICATION TITLE	SPEC #	JOB CLASSIFICATION TITLE	SPEC #
PUBLIC WORKS SUPERVISOR	09110	RECREATION FACILITY MANAGER II	02145
PURCHASING MANAGER	00337	RECREATION PROGRAMS COORDINATOR	02127
RADIO SYSTEM MANAGER	00264	RECREATION PROGRAMS SUPERVISOR	02129
RADIOLOGICAL EMERGENCY PREPAREDNESS PLANNER	06309	RECREATION SPECIALIST I	02125
REAL ESTATE CONTRACT ANALYST	01847	RECREATION SPECIALIST II	02126
REAL ESTATE SPECIALIST	01845	RECREATION SPECIALIST III	02128
REAL ESTATE TECHNICIAN	01836	RECRUITMENT SUPERVISOR	00514
RECEPTIONIST II	00108	REGISTERED NURSE	08014
RECEPTIONIST III	00109	REGISTRATION CLERK	02123
RECORDS & INFORMATION SPECIALIST	00443	REGULATORY COMPLIANCE/FIELD SUPERVISOR	09374
RECORDS CLERK	00105	REGULATORY SPECIALIST	01814
RECORDS MANAGER	00446	REHABILITATION COMPLIANCE INSPECTOR	03408
RECORDS SPECIALIST	00106	REHABILITATION LOAN PROCESSOR	03405
RECOVERY & MITIGATION PROGRAM MANAGER	06310	REPROGRAPHICS TECHNICIAN	04424
RECREATION FACILITY MANAGER I	02144	RESEARCH & PLANNING MANAGER	03996



PALM BEACH COUNTY PAY PLAN

JOB CLASSIFICATION TITLE	SPEC #	JOB CLASSIFICATION TITLE	SPEC #
RESEARCH SPECIALIST	01205	SECURITY MANAGER	05037
RESIDENTIAL COUNSELING COORDINATOR	03132	SECURITY OFFICER	05025
RESIDENTIAL YOUTH AFFAIRS COORDINATOR	03128	SECURITY SUPERVISOR	05030
RESIDENTIAL YOUTH COUNSELOR	03123	SECURITY SYSTEMS SUPERVISOR	00260
RESOURCE DEVELOPMENT SUPERVISOR	02025	SENIOR ANALYST PROGRAMMER	00988
RETIREMENT COORDINATOR	00554	SENIOR ASSISTANT COUNTY ATTORNEY	06029
RIGHT-OF-WAY SPECIALIST	01027	SENIOR AUDITOR	01528
RYAN WHITE PROGRAM MANAGER	03171	SENIOR BROADCAST FACILITY COORDINATOR	01402
RYAN WHITE QUALITY MANAGEMENT COORDINATOR	03172	SENIOR BUYER	00334
SCHOOL BUS RIDER	03307	SENIOR CABLE TELEVISION INSPECTOR	01410
SCHOOL BUS RIDER/FOOD SERVICE AIDE	03315	SENIOR CHEMIST	09398
SCRIPPS PROGRAM MANAGER	00433	SENIOR CLERK TYPIST	00111
SECRETARY	00120	SENIOR CODE ENFORCEMENT OFFICER	01366
SECURITY ADMINISTRATOR	00980	SENIOR COMMUNITY ACTION SPECIALIST	03233
SECURITY DOOR TECHNICIAN	04105	SENIOR COMPUTER OPERATOR	00919



PALM BEACH COUNTY PAY PLAN

JOB CLASSIFICATION TITLE	SPEC #	JOB CLASSIFICATION TITLE	SPEC #
SENIOR CONTRACTORS CERTIFICATION FIELD INVESTIGATOR	01353	SENIOR METER SERVICE TECHNICIAN	09376
SENIOR COORDINATOR - INFORMATION SYSTEMS SERVICES	00991	SENIOR NETWORK ADMINISTRATOR	00945
SENIOR COUNTY COMMISSION ADMINISTRATIVE ASSISTANT	00418	SENIOR NUTRITION SERVICES SPECIALIST	03018
SENIOR CRIMINAL JUSTICE ANALYST	03980	SENIOR PARTY CHIEF	01058
SENIOR CUSTOMER SERVICE REPRESENTATIVE	09392	SENIOR PLANNER	01213
SENIOR CUSTOMER SERVICE SPECIALIST	09300	SENIOR PROFESSIONAL ENGINEER	01087
SENIOR DATABASE ADMINISTRATOR	00967	SENIOR PROGRAMMER	00984
SENIOR ENTERPRISE CENTER OPERATOR	00918A	SENIOR PUBLIC RELATIONS SPECIALIST	00408
SENIOR ENVIRONMENTAL ANALYST	01943	SENIOR REGISTERED ARCHITECT	01803
SENIOR FAMILY DEVELOPMENT SPECIALIST	03236	SENIOR SECRETARY	00121
SENIOR HYDROGEOLOGIST	01931	SENIOR SERVER ADMINISTRATOR	00951
SENIOR LOSS CONTROL SPECIALIST	00804	SENIOR SERVICE AIDE	03001
SENIOR MANAGEMENT & OPERATIONS CONSULTANT	01710	SENIOR SERVICES OPERATIONS SUPERVISOR	03037
SENIOR MANAGER	00993	SENIOR SERVICES QUALITY ASSURANCE COORDINATOR	03038
SENIOR MANAGER EMERGENCY MANAGEMENT PROGRAMS	06303	SENIOR SIGN SHOP TECHNICIAN	04438



PALM BEACH COUNTY PAY PLAN

JOB CLASSIFICATION TITLE	SPEC #	JOB CLASSIFICATION TITLE	SPEC #
SENIOR SITE PLANNER	01218	SOFTWARE TRAINING SPECIALIST	00933
SENIOR ZONING/LANDSCAPE FIELD REPRESENTATIVE	01374	SPACE & INTERIOR PLANNER	01806
SERVER ADMINISTRATOR	00953	SPAY SHUTTLE DRIVER	06243
SERVER PROGRAMMER	00955	SPECIAL PROJECTS COORDINATOR	00401
SHOP & PLANT MAINTENANCE SUPERVISOR	09333	STAFF ACCOUNTANT	00611
SHOP SUPERVISOR	04221	STAFF ATTORNEY	06025
SIGN SHOP TECHNICIAN	04437	STOREKEEPER	00313
SITE MANAGER	03033	STORES CLERK	00310
SITE PLAN TECHNICIAN	01357	STRAY SHUTTLE DRIVER	06246
SITE PLANNER I	01216	STREETSCAPE LANDSCAPING COORDINATOR	01005
SITE PLANNER II	01217	SUBSTANCE ABUSE PREVENTION/GRANTS COORDINATOR	03987
SMALL BUSINESS ASSISTANCE PROGRAMS COORDINATOR	01615	SUPERVISOR ELECTRONIC SYSTEMS	00259
SMALL BUSINESS DEVELOPMENT MANAGER	01621	SUPERVISOR ENTERPRISE OPERATIONS	00925
SMALL BUSINESS DEVELOPMENT SPECIALIST I	01622	SUPERVISOR NETWORK OPERATIONS CENTER	00970A
SMALL BUSINESS DEVELOPMENT SPECIALIST II	01623	SUPERVISOR PRODUCTION SUPPORT	00978



PALM BEACH COUNTY PAY PLAN

JOB CLASSIFICATION TITLE	SPEC #	JOB CLASSIFICATION TITLE	SPEC #
SUPERVISOR SHELTER OPERATIONS	06236	TELEPHONE SERVICE ANALYST I	00248
SURVEY AIDE	01053	TELEPHONE SERVICE ANALYST II	00249
SURVEY INSTRUMENT TECHNICIAN	01055	TERRORISM RESPONSE PLANNER	06311
SYSTEMS ADMINISTRATOR I	00911	TRADES CREW CHIEF	04145
SYSTEMS ADMINISTRATOR II	00914	TRAFFIC ACCIDENT RECORDS COORDINATOR	01118
SYSTEMS ADMINISTRATOR III	00916	TRAFFIC CONSTRUCTION SUPERVISOR	01115
SYSTEMS ARCHITECTURE ANALYST	00969	TRAFFIC CONSTRUCTION WORKER I	01110
SYSTEMS INTEGRATOR	00968	TRAFFIC CONSTRUCTION WORKER II	01112
TECHNICAL AIDE	01010	TRAFFIC DATA SUPERVISOR	01116
TECHNICAL ASSISTANT I	01084	TRAFFIC MAINTENANCE SUPERVISOR	01106
TECHNICAL ASSISTANT II	01085	TRAFFIC MAINTENANCE WORKER I	01103
TECHNICAL ASSISTANT III	01086	TRAFFIC MAINTENANCE WORKER II	01104
TECHNICAL PROCUREMENT SPECIALIST	01002	TRAFFIC MAINTENANCE WORKER III	01105
TECHNICAL RESEARCH ASSISTANT	00932	TRAFFIC OPERATIONS SUPERINTENDENT	01120
TELEPHONE OPERATIONS SUPERVISOR	00247	TRAFFIC SIGN INSTALLER	01113



PALM BEACH COUNTY PAY PLAN

JOB CLASSIFICATION TITLE	SPEC #	JOB CLASSIFICATION TITLE	SPEC #
TRAFFIC SIGNAL SERVICER	01109	UTILITY CONSTRUCTION CREW CHIEF	09380
TRAFFIC SIGNAL SUPERVISOR	01111	UTILITY CONSTRUCTION CREW SUPERINTENDENT	09394
TRAFFIC SIGNAL TECHNICIAN I	01107	UTILITY CONSTRUCTION INSPECTOR	09351
TRAFFIC SIGNAL TECHNICIAN II	01108	UTILITY CONSTRUCTION TECHNICIAN I	09377
TRAFFIC SYSTEMS TECHNICIAN I	01114	UTILITY CONSTRUCTION TECHNICIAN II	09378
TRAFFIC SYSTEMS TECHNICIAN II	01117	UTILITY CONSTRUCTION TECHNICIAN III	09379
TRAFFIC TECHNICIAN I	01100	UTILITY CUSTOMER RELATIONS COORDINATOR	09383
TRAFFIC TECHNICIAN II	01101	UTILITY FIELD CUSTOMER SERVICE SUPERINTENDENT	09390
TRAINING & RESOURCE INCLUSION SUPERVISOR	03328	UTILITY FLEET MANAGEMENT AND TRAINING SUPERINTENDENT	09386
TRAINING & TECHNICAL ASSISTANCE COORDINATOR	03331	UTILITY LINE CREW CHIEF	09360
TRAINING AND ORGANIZATIONAL DEVELOPMENT COORDINATOR	00553	UTILITY LINE LOCATE TECHNICIAN	01102
TRANSPORTATION SPECIALIST	03025	UTILITY LINE MAINTENANCE SUPERVISOR	09337
TREE TRIMMER	02005	UTILITY LINE TECHNICIAN I	09361
TV PRODUCER/DIRECTOR	01404	UTILITY LINE TECHNICIAN II	09362
UTILITIES OPERATIONS & MAINTENANCE MANAGER	09358	UTILITY LINE TECHNICIAN III	09363



PALM BEACH COUNTY PAY PLAN

JOB CLASSIFICATION TITLE	SPEC #	JOB CLASSIFICATION TITLE	SPEC #
UTILITY MAINTENANCE PLANNER/SCHEDULER	09388	VICTIM SERVICES TEAM SUPERVISOR	03968
UTILITY PLANT MAINTENANCE SUPERVISOR	09326	VISITATION MONITOR	03109
UTILITY PLANT MECHANIC	09325	VOLUNTEER COORDINATOR	00426
UTILITY PLANT OPERATOR APPRENTICE	09315	VOLUNTEER PRE-KINDERGARTEN PROGRAM COORDINATOR	03354
UTILITY PLANT OPERATOR I	09317	WASTEWATER PLANT SUPERINTENDENT	09322
UTILITY PLANT OPERATOR II	09318	WATER PLANT SUPERINTENDENT	09321
UTILITY REGULATORY COMPLIANCE SPECIALIST	09372	WATER RECLAMATION PLANTS O & M MANAGER	09365
UTILITY REHABILITATION PROJECT COORDINATOR	09391	WATER UTILITIES LANDSCAPING COORDINATOR	09356
UTILITY ROUTING SPECIALIST	09303	WATERPARK OPERATIONS SPECIALIST	02162
VENDOR RESOURCE & ADMINISTRATIVE MANAGER	00342	WEB DESIGN COORDINATOR	00937
VETERANS' SERVICES OFFICER	03055	WEB SITE SPECIALIST	00935
VETERINARIAN	06237	WELDER I	04123
VICTIM ADVOCATE	03965	WELDER II	04124
VICTIM SERVICES LICENSED THERAPIST	03967	WORKERS COMPENSATION CLAIMS ADJUSTOR	00812
VICTIM SERVICES SENIOR PROGRAM COORDINATOR	03972	WUD ADMINISTRATIVE SERVICES COORDINATOR	09385



PALM BEACH COUNTY PAY PLAN

JOB CLASSIFICATION TITLE	SPEC #	JOB CLASSIFICATION TITLE	SPEC #
YOUTH AFFAIRS COORDINATOR	03130		
YOUTH AFFAIRS SENIOR PROGRAM MANAGER	03135		
YOUTH VIOLENCE PREVENTION PLANNING COORDINATOR	03976		
ZONING MANAGER	01221		
ZONING TECHNICIAN	01359		
ZONING/LANDSCAPE FIELD REPRESENTATIVE I	01372		
ZONING/LANDSCAPE FIELD REPRESENTATIVE II	01376		



CLASSIFICATION & PAY SCHEDULE



PALM BEACH COUNTY PAY PLAN

SPEC #	JOB CLASSIFICATION TABLE	PAY GR	HOURLY OR B/W PAY RANGE	ANNUAL PAY RANGE	O/T	B/U
	<u>GENERAL AND ADMINISTRATIVE</u>					
	<u>General Clerical</u>					
00103	CLERICAL SPECIALIST	12	12.422 - 19.787	25,837.76 - 41,156.96	NE	
00104	LEAD CLERK	17	14.398 - 22.939	29,947.84 - 47,713.12	NE	
00105	RECORDS CLERK	11	12.059 - 19.212	25,082.72 - 39,960.96	NE	
00106	RECORDS SPECIALIST	14	13.178 - 20.993	27,410.24 - 43,665.44	NE	
00108	RECEPTIONIST II	09	11.370 - 18.107	23,649.60 - 37,662.56	NE	
00109	RECEPTIONIST III	11	12.059 - 19.212	25,082.72 - 39,960.96	NE	
00110	CLERK TYPIST	09	11.370 - 18.107	23,649.60 - 37,662.56	NE	
00111	SENIOR CLERK TYPIST	12	12.422 - 19.787	25,837.76 - 41,156.96	NE	
00120	SECRETARY	16	13.979 - 22.263	29,076.32 - 46,307.04	NE	
00121	SENIOR SECRETARY	18	14.829 - 23.628	30,844.32 - 49,146.24	NE	
00132	COUNTY COMMISSION RECEPTIONIST	15	13.571 - 21.621	28,227.68 - 44,971.68	NE	
00135	COMMISSION SECRETARY	24	1,417.28 - 2,257.20	36,849.28 - 58,687.20	EX	
00140	EXECUTIVE ASSISTANT II	26	1,503.68 - 2,394.64	39,095.68 - 62,260.64	EX	
00145	ADMINISTRATIVE SECRETARY	21	16.213 - 25.818	33,723.04 - 53,701.44	NE	
00147	PROCUREMENT SPECIALIST	19	15.275 - 24.337	31,772.00 - 50,620.96	NE	
00150	OFFICE MANAGER	22	1,335.84 - 2,127.52	34,731.84 - 55,315.52	EX	
00155	EXECUTIVE ASSISTANT I	24	17.716 - 28.215	36,849.28 - 58,687.20	NE	
	<u>Communications</u>					
00205	AUDIO/VISUAL TECHNICIAN	18	14.829 - 23.628	30,844.32 - 49,146.24	NE	
00237	COMMUNICATOR (BARGAINING UNIT)	15	13.571 - 21.621	28,227.68 - 44,971.68	NE	CWA



PALM BEACH COUNTY PAY PLAN

SPEC #	JOB CLASSIFICATION TABLE	PAY GR	HOURLY OR B/W PAY RANGE	ANNUAL PAY RANGE	O/T	B/U
00238	CHIEF COMMUNICATOR	25	1,459.52 - 2,324.80	37,947.52 - 60,444.80	EX	
00239	COMMUNICATOR (NON BARGAINING UNIT)	15	13.571 - 21.621	28,227.68 - 44,971.68	NE	
00242	ELECTRONICS TECHNICIAN	32	22.443 - 35.742	46,681.44 - 74,343.36	NE	
00243	EMERGENCY MANAGEMENT COMMUNICATIONS SPECIALIST	28	1,595.04 - 2,540.24	41,471.04 - 66,046.24	EX	
00246	MANAGER TELECOMMUNICATIONS SECTION	38	2,143.68 - 3,413.68	55,735.68 - 88,755.68	EX	
00247	TELEPHONE OPERATIONS SUPERVISOR	35	1,961.60 - 3,124.16	51,001.60 - 81,228.16	EX	
00248	TELEPHONE SERVICE ANALYST I	28	1,595.04 - 2,540.24	41,471.04 - 66,046.24	EX	
00249	TELEPHONE SERVICE ANALYST II	32	1,795.44 - 2,859.36	46,681.44 - 74,343.36	EX	
00250	DIRECTOR ELECTRONIC SERVICES & SECURITY	E04	3,360.40 - 5,899.44	87,370.40 - 153,385.44	EX	
00251	COMMUNICATION SYSTEMS PLANNER	42	2,412.80 - 3,842.16	62,732.80 - 99,896.16	EX	
00255	ELECTRONICS SYSTEMS PLANNER	42	2,412.80 - 3,842.16	62,732.80 - 99,896.16	EX	
00256	MANAGER CRIMINAL JUSTICE ELECTRONIC SYSTEMS	42	2,412.80 - 3,842.16	62,732.80 - 99,896.16	EX	
00257	INSTRUMENTATION TECHNICIAN	32	22.443 - 35.742	46,681.44 - 74,343.36	NE	
00258	COMMUNICATIONS NETWORK AND SYSTEMS ANALYST	37	2,081.36 - 3,314.56	54,115.36 - 86,178.56	EX	
00259	SUPERVISOR ELECTRONIC SYSTEMS	35	1,961.60 - 3,124.16	51,001.60 - 81,228.16	EX	
00260	SECURITY SYSTEMS SUPERVISOR	35	1,961.60 - 3,124.16	51,001.60 - 81,228.16	EX	
00264	RADIO SYSTEM MANAGER	42	2,412.80 - 3,842.16	62,732.80 - 99,896.16	EX	
	<u>Stores and Procurement</u>					
00310	STORES CLERK	09	11.370 - 18.107	23,649.60 - 37,662.56	NE	CWA
00313	STOREKEEPER	16	13.979 - 22.263	29,076.32 - 46,307.04	NE	CWA
00317	MATERIALS MANAGER	27	1,548.72 - 2,466.08	40,266.72 - 64,118.08	EX	
00320	MANAGER INVENTORY MANAGEMENT & STORES	39	2,208.16 - 3,516.16	57,412.16 - 91,420.16	EX	



PALM BEACH COUNTY PAY PLAN

SPEC #	JOB CLASSIFICATION TABLE	PAY GR	HOURLY OR B/W PAY RANGE	ANNUAL PAY RANGE	O/T	B/U
00322	MANAGER PROCUREMENT & STORES	34	1,904.48 - 3,033.36	49,516.48 - 78,867.36	EX	
00325	MESSENGER	11	12.059 - 19.212	25,082.72 - 39,960.96	NE	CWA
00331	BUYER ASSISTANT	19	15.275 - 24.337	31,772.00 - 50,620.96	NE	
00332	CONTRACT COMPLIANCE SPECIALIST	30	1,692.32 - 2,695.04	44,000.32 - 70,071.04	EX	
00334	SENIOR BUYER	33	1,849.36 - 2,944.72	48,083.36 - 76,562.72	EX	
00335	BUYER	27	19.359 - 30.826	40,266.72 - 64,118.08	NE	
00336	CONTRACT MANAGEMENT SPECIALIST	24	17.716 - 28.215	36,849.28 - 58,687.20	NE	
00337	PURCHASING MANAGER	42	2,412.80 - 3,842.16	62,732.80 - 99,896.16	EX	
00340	PROCUREMENT & INVENTORY SYSTEM MANAGER	39	2,208.16 - 3,516.16	57,412.16 - 91,420.16	EX	
00341	DIRECTOR PURCHASING	E06	3,847.28 - 6,754.16	100,029.28 - 175,608.16	EX	
00342	VENDOR RESOURCE & ADMINISTRATIVE MANAGER	33	1,849.36 - 2,944.72	48,083.36 - 76,562.72	EX	
	<u>General Administrative</u>					
00400	ADMINISTRATIVE ASSISTANT	26	1,503.68 - 2,394.64	39,095.68 - 62,260.64	EX	
00401	SPECIAL PROJECTS COORDINATOR	34	1,904.48 - 3,033.36	49,516.48 - 78,867.36	EX	
00402	PUBLIC INFORMATION SPECIALIST	23	1,376.00 - 2,191.28	35,776.00 - 56,973.28	EX	
00403	COMMUNICATIONS SPECIALIST	22	16.698 - 26.594	34,731.84 - 55,315.52	NE	
00404	PUBLIC RELATIONS SPECIALIST	26	1,503.68 - 2,394.64	39,095.68 - 62,260.64	EX	
00405	COORDINATOR SPECIAL EVENTS & PROMOTIONS	38	2,143.68 - 3,413.68	55,735.68 - 88,755.68	EX	
00406	MANAGER COMMUNITY RELATIONS & MARKETING	41	2,342.40 - 3,730.24	60,902.40 - 96,986.24	EX	
00407	MANAGER PROJECT COORDINATION	40	2,274.48 - 3,621.84	59,136.48 - 94,167.84	EX	
00408	SENIOR PUBLIC RELATIONS SPECIALIST	31	1,742.80 - 2,775.68	45,312.80 - 72,167.68	EX	
00409	EXECUTIVE DIRECTOR PBC DELEGATION OFFICE	38	2,143.68 - 3,413.68	55,735.68 - 88,755.68	EX	



PALM BEACH COUNTY PAY PLAN

SPEC #	JOB CLASSIFICATION TABLE	PAY GR	HOURLY OR B/W PAY RANGE	ANNUAL PAY RANGE	O/T	B/U
00410	DIRECTOR PUBLIC AFFAIRS	E06	3,847.28 - 6,754.16	100,029.28 - 175,608.16	EX	
00411	DIRECTOR LEGISLATIVE AFFAIRS	E03	3,140.56 - 5,513.84	81,654.56 - 143,359.84	EX	
00413	LEGISLATIVE COORDINATOR	38	2,143.68 - 3,413.68	55,735.68 - 88,755.68	EX	
00418	SENIOR COUNTY COMMISSION ADMINISTRATIVE ASSISTANT	E01	2,743.12 - 4,848.24	71,321.12 - 126,054.24	EX	
00420	COUNTY COMMISSION ADMINISTRATIVE ASSISTANT	32	1,795.44 - 2,859.36	46,681.44 - 74,343.36	EX	
00421	DIRECTOR TOURIST DEVELOPMENT	E05	3,595.44 - 6,312.72	93,481.44 - 164,130.72	EX	
00422	DEPUTY COUNTY ADMINISTRATOR	E10	5,042.96 - 8,853.84	131,116.96 - 230,199.84	EX	
00423	ASSISTANT COUNTY ADMINISTRATOR	E09	4,713.12 - 8,274.40	122,541.12 - 215,134.40	EX	
00424	AGENDA COORDINATOR	26	18.796 - 29.933	39,095.68 - 62,260.64	NE	
00425	ECONOMIC DEVELOPMENT SPECIALIST	35	1,961.60 - 3,124.16	51,001.60 - 81,228.16	EX	
00426	VOLUNTEER COORDINATOR	20	1,258.64 - 2,005.44	32,724.64 - 52,141.44	EX	
00427	DIRECTOR ECONOMIC DEVELOPMENT	E03	3,140.56 - 5,513.84	81,654.56 - 143,359.84	EX	
00429	EXECUTIVE ASSISTANT III	30	1,692.32 - 2,695.04	44,000.32 - 70,071.04	EX	
00430	COUNTY ADMINISTRATOR	00	Contractual		EX	
00431	COUNTY WATER RESOURCES MANAGER	E05	3,595.44 - 6,312.72	93,481.44 - 164,130.72	EX	
00432	DIRECTOR OFFICE OF COMMUNITY REVITALIZATION	E02	2,935.12 - 5,153.12	76,313.12 - 133,981.12	EX	
00433	SCRIPPS PROGRAM MANAGER	E09	4,713.12 - 8,274.40	122,541.12 - 215,134.40	EX	
00435	COUNTY COMMISSIONER	00	Elected Official		EX	
00436	ECONOMIC DEVELOPMENT ANALYST	40	2,274.48 - 3,621.84	59,136.48 - 94,167.84	EX	
00437	ECONOMIC DEVELOPMENT ASSISTANT	32	22.443 - 35.742	46,681.44 - 74,343.36	NE	
00438	ECONOMIC DEVELOPMENT LOAN MANAGER	40	2,274.48 - 3,621.84	59,136.48 - 94,167.84	EX	
00443	RECORDS & INFORMATION SPECIALIST	21	16.213 - 25.818	33,723.04 - 53,701.44	NE	



PALM BEACH COUNTY PAY PLAN

SPEC #	JOB CLASSIFICATION TABLE	PAY GR	HOURLY OR B/W PAY RANGE	ANNUAL PAY RANGE	O/T	B/U
00446	RECORDS MANAGER	35	1,961.60 - 3,124.16	51,001.60 - 81,228.16	EX	
00450	PUBLIC ART PROGRAM ADMINISTRATOR	37	2,081.36 - 3,314.56	54,115.36 - 86,178.56	EX	
00451	CONTRACT MANAGER	39	2,208.16 - 3,516.16	57,412.16 - 91,420.16	EX	
	<u>PALM TRAN</u>					
00470	PALM TRAN MAINTENANCE MANAGER	46	2,715.60 - 4,325.20	70,605.60 - 112,455.20	EX	
00473	ASSISTANT DIRECTOR PALM TRAN	E03	3,140.56 - 5,513.84	81,654.56 - 143,359.84	EX	
00475	DIRECTOR PALM TRAN	E07	4,116.40 - 7,227.12	107,026.40 - 187,905.12	EX	
	<u>HOUSING FINANCE AUTHORITY</u>					
00480	EXECUTIVE DIRECTOR HOUSING FINANCE AUTHORITY	00	Salary Set By HFA		EX	
00482	HOUSING FINANCE AUTHORITY SECRETARY	00	Salary Set By HFA		NE	
	<u>HUMAN RESOURCES</u>					
00500	HUMAN RESOURCES SPECIALIST I	27	1,548.72 - 2,466.08	40,266.72 - 64,118.08	EX	
00502	EQUAL EMPLOYMENT COMPLIANCE SPECIALIST I	28	19.938 - 31.753	41,471.04 - 66,046.24	NE	
00503	HUMAN RESOURCES INFORMATION SYSTEMS SPECIALIST	30	1,692.32 - 2,695.04	44,000.32 - 70,071.04	EX	
00506	HUMAN RESOURCES TECHNICIAN	18	14.829 - 23.628	30,844.32 - 49,146.24	NE	
00510	HUMAN RESOURCES SPECIALIST II	30	1,692.32 - 2,695.04	44,000.32 - 70,071.04	EX	
00512	MANAGER COMPENSATION & RECORDS	44	2,559.92 - 4,076.80	66,557.92 - 105,996.80	EX	
00514	RECRUITMENT SUPERVISOR	35	1,961.60 - 3,124.16	51,001.60 - 81,228.16	EX	
00523	EQUAL EMPLOYMENT COMPLIANCE SPECIALIST II	34	1,904.48 - 3,033.36	49,516.48 - 78,867.36	EX	
00525	MANAGER FAIR EMPLOYMENT PROGRAMS	44	2,559.92 - 4,076.80	66,557.92 - 105,996.80	EX	
00527	MANAGER RECRUITMENT & SELECTION	44	2,559.92 - 4,076.80	66,557.92 - 105,996.80	EX	
00530	DIRECTOR HUMAN RESOURCES	E06	3,847.28 - 6,754.16	100,029.28 - 175,608.16	EX	



PALM BEACH COUNTY PAY PLAN

SPEC #	JOB CLASSIFICATION TABLE	PAY GR	HOURLY OR B/W PAY RANGE	ANNUAL PAY RANGE	O/T	B/U
00531	ASSISTANT DIRECTOR HUMAN RESOURCES	E03	3,140.56 - 5,513.84	81,654.56 - 143,359.84	EX	
00550	HUMAN RESOURCES SPECIALIST III	32	1,795.44 - 2,859.36	46,681.44 - 74,343.36	EX	
00552	HUMAN RESOURCES SPECIALIST IV	38	2,143.68 - 3,413.68	55,735.68 - 88,755.68	EX	
00553	TRAINING AND ORGANIZATIONAL DEVELOPMENT COORDINATOR	38	2,143.68 - 3,413.68	55,735.68 - 88,755.68	EX	
00554	RETIREMENT COORDINATOR	32	1,795.44 - 2,859.36	46,681.44 - 74,343.36	EX	
	<u>FISCAL</u>					
00600	CASH ACCOUNTING CLERK	13	12.790 - 20.372	26,603.20 - 42,373.76	NE	
00602	FISCAL SPECIALIST I	15	13.571 - 21.621	28,227.68 - 44,971.68	NE	
00603	FISCAL SPECIALIST II	20	15.733 - 25.068	32,724.64 - 52,141.44	NE	
00604	FISCAL SPECIALIST III	25	1,459.52 - 2,324.80	37,947.52 - 60,444.80	EX	
00611	STAFF ACCOUNTANT	30	1,692.32 - 2,695.04	44,000.32 - 70,071.04	EX	
00612	ACCOUNTANT	35	1,961.60 - 3,124.16	51,001.60 - 81,228.16	EX	
00614	COLLECTIONS COORDINATOR	42	2,412.80 - 3,842.16	62,732.80 - 99,896.16	EX	
00615	ASSISTANT DIRECTOR BUDGET	E02	2,935.12 - 5,153.12	76,313.12 - 133,981.12	EX	
	<u>FISCAL</u>					
00616	DIRECTOR BUDGET	E06	3,847.28 - 6,754.16	100,029.28 - 175,608.16	EX	
00620	FINANCIAL ANALYST I	30	1,692.32 - 2,695.04	44,000.32 - 70,071.04	EX	
00622	FINANCIAL ANALYST II	35	1,961.60 - 3,124.16	51,001.60 - 81,228.16	EX	
00624	FINANCIAL ANALYST III	40	2,274.48 - 3,621.84	59,136.48 - 94,167.84	EX	
00625	FISCAL MANAGER I	42	2,412.80 - 3,842.16	62,732.80 - 99,896.16	EX	
00626	FISCAL MANAGER II	46	2,715.60 - 4,325.20	70,605.60 - 112,455.20	EX	
00627	FISCAL DIRECTOR	E05	3,595.44 - 6,312.72	93,481.44 - 164,130.72	EX	



PALM BEACH COUNTY PAY PLAN

SPEC #	JOB CLASSIFICATION TABLE	PAY GR	HOURLY OR B/W PAY RANGE	ANNUAL PAY RANGE	O/T	B/U
	<u>RISK MANAGEMENT</u>					
00803	LOSS CONTROL TECHNICIAN	22	16.698 - 26.594	34,731.84 - 55,315.52	NE	
00804	SENIOR LOSS CONTROL SPECIALIST	40	2,274.48 - 3,621.84	59,136.48 - 94,167.84	EX	
00805	LOSS CONTROL SPECIALIST	37	2,081.36 - 3,314.56	54,115.36 - 86,178.56	EX	
00806	MANAGER LOSS CONTROL	44	2,559.92 - 4,076.80	66,557.92 - 105,996.80	EX	
00807	LOSS CONTROL COORDINATOR	42	2,412.80 - 3,842.16	62,732.80 - 99,896.16	EX	
00808	INDUSTRIAL HYGIENIST	40	2,274.48 - 3,621.84	59,136.48 - 94,167.84	EX	
00810	MANAGER WORKERS' COMPENSATION	40	2,274.48 - 3,621.84	59,136.48 - 94,167.84	EX	
00812	WORKERS COMPENSATION CLAIMS ADJUSTOR	22	16.698 - 26.594	34,731.84 - 55,315.52	NE	
00820	EMPLOYEE ASSISTANCE PROGRAM COORDINATOR	40	2,274.48 - 3,621.84	59,136.48 - 94,167.84	EX	
00821	EMPLOYEE ASSISTANCE PROGRAM SPECIALIST	32	1,795.44 - 2,859.36	46,681.44 - 74,343.36	EX	
00822	OCCUPATIONAL HEALTH NURSE	32	1,795.44 - 2,859.36	46,681.44 - 74,343.36	EX	
00823	MANAGER OCCUPATIONAL HEALTH	40	2,274.48 - 3,621.84	59,136.48 - 94,167.84	EX	
00825	GROUP INSURANCE SPECIALIST	21	16.213 - 25.818	33,723.04 - 53,701.44	NE	
00826	GROUP INSURANCE COORDINATOR	33	1,849.36 - 2,944.72	48,083.36 - 76,562.72	EX	
00828	INSURANCE CLAIMS SPECIALIST	19	15.275 - 24.337	31,772.00 - 50,620.96	NE	
00830	PROPERTY & CASUALTY INSURANCE & CLAIMS MANAGER	42	2,412.80 - 3,842.16	62,732.80 - 99,896.16	EX	
00835	DIRECTOR RISK MANAGEMENT	E06	3,847.28 - 6,754.16	100,029.28 - 175,608.16	EX	
	<u>COMPUTER OPERATIONS</u>					
00900	DATA ENTRY CLERK	09	11.370 - 18.107	23,649.60 - 37,662.56	NE	
00902	DATA PROCESSOR I	12	12.422 - 19.787	25,837.76 - 41,156.96	NE	
00903	DATA PROCESSOR II	17	14.398 - 22.939	29,947.84 - 47,713.12	NE	



PALM BEACH COUNTY PAY PLAN

SPEC #	JOB CLASSIFICATION TABLE	PAY GR	HOURLY OR B/W PAY RANGE	ANNUAL PAY RANGE	O/T	B/U
00904	COMPUTER SPECIALIST I	24	17.716 - 28.215	36,849.28 - 58,687.20	NE	
00908	COMPUTER SPECIALIST II	30	21.154 - 33.688	44,000.32 - 70,071.04	NE	
00910A	AGENCY ANALYST PROGRAMMER	37	2,081.36 - 3,314.56	54,115.36 - 86,178.56	EX	
00911	SYSTEMS ADMINISTRATOR I	32	22.443 - 35.742	46,681.44 - 74,343.36	NE	
00914	SYSTEMS ADMINISTRATOR II	36	25.254 - 40.223	52,528.32 - 83,663.84	NE	
00916	SYSTEMS ADMINISTRATOR III	39	2,208.16 - 3,516.16	57,412.16 - 91,420.16	EX	
	<u>INFORMATION SYSTEMS SERVICES</u>					
00917	COMPUTER OPERATOR	22	16.698 - 26.594	34,731.84 - 55,315.52	NE	
00918	ENTERPRISE CENTER OPERATOR	22	16.698 - 26.594	34,731.84 - 55,315.52	NE	
00918A	SENIOR ENTERPRISE CENTER OPERATOR	25	18.244 - 29.060	37,947.52 - 60,444.80	NE	
00919	SENIOR COMPUTER OPERATOR	25	18.244 - 29.060	37,947.52 - 60,444.80	NE	
00922	ENTERPRISE SHIFT SUPERVISOR	27	1,548.72 - 2,466.08	40,266.72 - 64,118.08	EX	
00923	MANAGER ENTERPRISE CENTER	38	2,143.68 - 3,413.68	55,735.68 - 88,755.68	EX	
00925	SUPERVISOR ENTERPRISE OPERATIONS	35	1,961.60 - 3,124.16	51,001.60 - 81,228.16	EX	
00926	CJIS/CIVIS PROJECT COORDINATOR	30	21.154 - 33.688	44,000.32 - 70,071.04	NE	
00927	JIS SOFTWARE TRAINING SPECIALIST	23	17.200 - 27.391	35,776.00 - 56,973.28	NE	
00929	CJIS/CIVIS SYSTEMS ADMINISTRATOR	34	23.806 - 37.917	49,516.48 - 78,867.36	NE	
00930	PROCUREMENT COORDINATOR	30	1,692.32 - 2,695.04	44,000.32 - 70,071.04	EX	
00931	CUSTOMER REPRESENTATIVE - ISS	24	17.716 - 28.215	36,849.28 - 58,687.20	NE	
00931A	NETWORK OPERATIONS TECHNICIAN	26	18.796 - 29.933	39,095.68 - 62,260.64	NE	
00932	TECHNICAL RESEARCH ASSISTANT	30	1,692.32 - 2,695.04	44,000.32 - 70,071.04	EX	
00933	SOFTWARE TRAINING SPECIALIST	34	1,904.48 - 3,033.36	49,516.48 - 78,867.36	EX	



PALM BEACH COUNTY PAY PLAN

SPEC #	JOB CLASSIFICATION TABLE	PAY GR	HOURLY OR B/W PAY RANGE	ANNUAL PAY RANGE	O/T	B/U
00935	WEB SITE SPECIALIST	24	17.716 - 28.215	36,849.28 - 58,687.20	NE	
00937	WEB DESIGN COORDINATOR	36	2,020.32 - 3,217.84	52,528.32 - 83,663.84	EX	
00942	NETWORK INTEGRATION SPECIALIST	29	20.538 - 32.708	42,719.04 - 68,032.64	NE	
00944	NETWORK ADMINISTRATOR	35	1,961.60 - 3,124.16	51,001.60 - 81,228.16	EX	
00945	SENIOR NETWORK ADMINISTRATOR	40	2,274.48 - 3,621.84	59,136.48 - 94,167.84	EX	
00945A	DESKTOP ADMINISTRATOR	35	24.520 - 39.052	51,001.60 - 81,228.16	NE	
00951	SENIOR SERVER ADMINISTRATOR	40	2,274.48 - 3,621.84	59,136.48 - 94,167.84	EX	
00953	SERVER ADMINISTRATOR	35	24.520 - 39.052	51,001.60 - 81,228.16	NE	
00955	SERVER PROGRAMMER	32	22.443 - 35.742	46,681.44 - 74,343.36	NE	
00964	DATABASE ADMINISTRATOR	39	27.602 - 43.952	57,412.16 - 91,420.16	NE	
00966	COORDINATOR ISS PHYSICAL ASSETS	22	16.698 - 26.594	34,731.84 - 55,315.52	NE	
00967	SENIOR DATABASE ADMINISTRATOR	43	2,485.28 - 3,957.76	64,617.28 - 102,901.76	EX	
00968	SYSTEMS INTEGRATOR	43	2,485.28 - 3,957.76	64,617.28 - 102,901.76	EX	
00969	SYSTEMS ARCHITECTURE ANALYST	49	2,967.36 - 4,725.84	77,151.36 - 122,871.84	EX	
00970	INFORMATION SYSTEMS AUDITOR	35	1,961.60 - 3,124.16	51,001.60 - 81,228.16	EX	
00970A	SUPERVISOR NETWORK OPERATIONS CENTER	30	1,692.32 - 2,695.04	44,000.32 - 70,071.04	EX	
00975	JIS PROJECT MANAGER	E06	3,847.28 - 6,754.16	100,029.28 - 175,608.16	EX	
00978	SUPERVISOR PRODUCTION SUPPORT	30	1,692.32 - 2,695.04	44,000.32 - 70,071.04	EX	
00978A	PRODUCTION SUPPORT SPECIALIST	25	18.244 - 29.060	37,947.52 - 60,444.80	NE	
00980	SECURITY ADMINISTRATOR	42	2,412.80 - 3,842.16	62,732.80 - 99,896.16	EX	
00982	PROGRAMMER	30	21.154 - 33.688	44,000.32 - 70,071.04	NE	
00984	SENIOR PROGRAMMER	35	24.520 - 39.052	51,001.60 - 81,228.16	NE	



PALM BEACH COUNTY PAY PLAN

SPEC #	JOB CLASSIFICATION TABLE	PAY GR	HOURLY OR B/W PAY RANGE	ANNUAL PAY RANGE	O/T	B/U
00986	ANALYST PROGRAMMER	37	2,081.36 - 3,314.56	54,115.36 - 86,178.56	EX	
00987	DIRECTOR TELECOMMUNICATIONS	E04	3,360.40 - 5,899.44	87,370.40 - 153,385.44	EX	
00987A	DIRECTOR NETWORK SERVICES DIVISION	E02	2,935.12 - 5,153.12	76,313.12 - 133,981.12	EX	
00988	SENIOR ANALYST PROGRAMMER	40	2,274.48 - 3,621.84	59,136.48 - 94,167.84	EX	
00989	DIRECTOR APPLICATION SERVICES	E02	2,935.12 - 5,153.12	76,313.12 - 133,981.12	EX	
00990	COORDINATOR - INFORMATION SYSTEMS SERVICES	36	2,020.32 - 3,217.84	52,528.32 - 83,663.84	EX	
00991	SENIOR COORDINATOR - INFORMATION SYSTEMS SERVICES	40	2,274.48 - 3,621.84	59,136.48 - 94,167.84	EX	
00992	MANAGER	42	2,412.80 - 3,842.16	62,732.80 - 99,896.16	EX	
00993	SENIOR MANAGER	46	2,715.60 - 4,325.20	70,605.60 - 112,455.20	EX	
00993A	DIRECTOR COMPUTING PLATFORMS DIVISION	E02	2,935.12 - 5,153.12	76,313.12 - 133,981.12	EX	
00994	AGENCY CONSULTANT	46	2,715.60 - 4,325.20	70,605.60 - 112,455.20	EX	
00995	DIRECTOR INFORMATION SYSTEMS SERVICES	E08	4,404.48 - 7,733.28	114,516.48 - 201,065.28	EX	
00995A	DEPUTY DIRECTOR ISS	E06	3,847.28 - 6,754.16	100,029.28 - 175,608.16	EX	
00996	INFORMATION TECHNOLOGY MANAGER	46	2,715.60 - 4,325.20	70,605.60 - 112,455.20	EX	
00997	COUNTYWIDE GIS COORDINATOR	46	2,715.60 - 4,325.20	70,605.60 - 112,455.20	EX	
00998	DIRECTOR TECHNICAL SERVICES	E05	3,595.44 - 6,312.72	93,481.44 - 164,130.72	EX	
00999	DIRECTOR PLANNING & QUALITY ASSURANCE	E03	3,140.56 - 5,513.84	81,654.56 - 143,359.84	EX	
	<u>ENGINEERING AND RELATED</u>					
	<u>Engineering</u>					
01000	BRIDGE INSPECTOR I	23	17.200 - 27.391	35,776.00 - 56,973.28	NE	
01001	BRIDGE INSPECTOR II	27	19.359 - 30.826	40,266.72 - 64,118.08	NE	
01002	TECHNICAL PROCUREMENT SPECIALIST	25	18.244 - 29.060	37,947.52 - 60,444.80	NE	



PALM BEACH COUNTY PAY PLAN

SPEC #	JOB CLASSIFICATION TABLE	PAY GR	HOURLY OR B/W PAY RANGE	ANNUAL PAY RANGE	O/T	B/U
01003	BRIDGE INSPECTION SUPERVISOR	32	1,795.44 - 2,859.36	46,681.44 - 74,343.36	EX	
01005	STREETSCAPE LANDSCAPING COORDINATOR	38	2,143.68 - 3,413.68	55,735.68 - 88,755.68	EX	
01006	MANAGER STREETSCAPE	42	2,412.80 - 3,842.16	62,732.80 - 99,896.16	EX	
01007	CONSTRUCTION PROJECT SPECIALIST	35	24.520 - 39.052	51,001.60 - 81,228.16	NE	
01008	CONSTRUCTION COORDINATION AIDE	19	15.275 - 24.337	31,772.00 - 50,620.96	NE	
01009	CONSTRUCTION COORDINATOR	33	23.117 - 36.809	48,083.36 - 76,562.72	NE	
01010	TECHNICAL AIDE	19	15.275 - 24.337	31,772.00 - 50,620.96	NE	
01012	CHIEF CONSTRUCTION COORDINATOR	40	2,274.48 - 3,621.84	59,136.48 - 94,167.84	EX	
01013	DIRECTOR CONSTRUCTION COORDINATION	E03	3,140.56 - 5,513.84	81,654.56 - 143,359.84	EX	
01020	ABTRACTOR/TITLE EXAMINER	23	17.200 - 27.391	35,776.00 - 56,973.28	NE	
01023	ABTRACTOR SUPERVISOR	28	1,595.04 - 2,540.24	41,471.04 - 66,046.24	EX	
01027	RIGHT-OF-WAY SPECIALIST	23	17.200 - 27.391	35,776.00 - 56,973.28	NE	
01029	CONSULTANT CONTRACT MANAGEMENT SPECIALIST	20	15.733 - 25.068	32,724.64 - 52,141.44	NE	
01053	SURVEY AIDE	15	13.571 - 21.621	28,227.68 - 44,971.68	NE	CWA
01055	SURVEY INSTRUMENT TECHNICIAN	18	14.829 - 23.628	30,844.32 - 49,146.24	NE	CWA
01057	PARTY CHIEF	21	16.213 - 25.818	33,723.04 - 53,701.44	NE	CWA
01058	SENIOR PARTY CHIEF	25	1,459.52 - 2,324.80	37,947.52 - 60,444.80	EX	
01060	LAND SURVEYOR- NON REGISTERED	36	2,020.32 - 3,217.84	52,528.32 - 83,663.84	EX	
01061	LAND SURVEYOR - REGISTERED	39	2,208.16 - 3,516.16	57,412.16 - 91,420.16	EX	
01064	MANAGER LAND SURVEY	42	2,412.80 - 3,842.16	62,732.80 - 99,896.16	EX	
01070	DIRECTOR ENGINEERING SERVICES	E04	3,360.40 - 5,899.44	87,370.40 - 153,385.44	EX	
01071	PROJECT COORDINATOR I	32	1,795.44 - 2,859.36	46,681.44 - 74,343.36	EX	



PALM BEACH COUNTY PAY PLAN

SPEC #	JOB CLASSIFICATION TABLE	PAY GR	HOURLY OR B/W PAY RANGE	ANNUAL PAY RANGE	O/T	B/U
01072	PROJECT COORDINATOR II	38	2,143.68 - 3,413.68	55,735.68 - 88,755.68	EX	
01073	PROJECT DESIGNER I	32	1,795.44 - 2,859.36	46,681.44 - 74,343.36	EX	
01074	PROJECT DESIGNER II	38	2,143.68 - 3,413.68	55,735.68 - 88,755.68	EX	
01075	DIRECTOR LAND DEVELOPMENT	E04	3,360.40 - 5,899.44	87,370.40 - 153,385.44	EX	
01076	PROJECT REVIEWER I	32	1,795.44 - 2,859.36	46,681.44 - 74,343.36	EX	
01077	PROJECT REVIEWER II	38	2,143.68 - 3,413.68	55,735.68 - 88,755.68	EX	
01080	INTELLIGENT TRANSPORTATION SYSTEM SUPERVISOR	33	1,849.36 - 2,944.72	48,083.36 - 76,562.72	EX	
01081	INTELLIGENT TRANSPORTATION SYSTEM TECHNICIAN	27	19.359 - 30.826	40,266.72 - 64,118.08	NE	
01084	TECHNICAL ASSISTANT I	24	17.716 - 28.215	36,849.28 - 58,687.20	NE	
01085	TECHNICAL ASSISTANT II	27	19.359 - 30.826	40,266.72 - 64,118.08	NE	
01086	TECHNICAL ASSISTANT III	30	1,692.32 - 2,695.04	44,000.32 - 70,071.04	EX	
01087	SENIOR PROFESSIONAL ENGINEER	48	2,881.12 - 4,588.00	74,909.12 - 119,288.00	EX	
01088	DIRECTOR ROADWAY PRODUCTION	E05	3,595.44 - 6,312.72	93,481.44 - 164,130.72	EX	
01089	MANAGER FIVE YEAR ROAD PROGRAM	E03	3,140.56 - 5,513.84	81,654.56 - 143,359.84	EX	
01092	DEPUTY COUNTY ENGINEER	E08	4,404.48 - 7,733.28	114,516.48 - 201,065.28	EX	
01096	PROFESSIONAL ENGINEER	45	2,636.56 - 4,198.88	68,550.56 - 109,170.88	EX	
01097	DIRECTOR ADMINISTRATIVE SERVICES	E02	2,935.12 - 5,153.12	76,313.12 - 133,981.12	EX	
01098	ASSISTANT COUNTY ENGINEER	E05	3,595.44 - 6,312.72	93,481.44 - 164,130.72	EX	
01099	COUNTY ENGINEER	E09	4,713.12 - 8,274.40	122,541.12 - 215,134.40	EX	
	<u>Traffic Engineering</u>					
01100	TRAFFIC TECHNICIAN I	18	14.829 - 23.628	30,844.32 - 49,146.24	NE	CWA
01101	TRAFFIC TECHNICIAN II	21	16.213 - 25.818	33,723.04 - 53,701.44	NE	CWA



PALM BEACH COUNTY PAY PLAN

SPEC #	JOB CLASSIFICATION TABLE	PAY GR	HOURLY OR B/W PAY RANGE	ANNUAL PAY RANGE	O/T	B/U
01102	UTILITY LINE LOCATE TECHNICIAN	22	16.698 - 26.594	34,731.84 - 55,315.52	NE	CWA
01103	TRAFFIC MAINTENANCE WORKER I	14	13.178 - 20.993	27,410.24 - 43,665.44	NE	CWA
01104	TRAFFIC MAINTENANCE WORKER II	17	14.398 - 22.939	29,947.84 - 47,713.12	NE	CWA
01105	TRAFFIC MAINTENANCE WORKER III	20	15.733 - 25.068	32,724.64 - 52,141.44	NE	CWA
01106	TRAFFIC MAINTENANCE SUPERVISOR	32	1,795.44 - 2,859.36	46,681.44 - 74,343.36	EX	
01107	TRAFFIC SIGNAL TECHNICIAN I	24	17.716 - 28.215	36,849.28 - 58,687.20	NE	CWA
01108	TRAFFIC SIGNAL TECHNICIAN II	28	19.938 - 31.753	41,471.04 - 66,046.24	NE	CWA
01109	TRAFFIC SIGNAL SERVICER	20	15.733 - 25.068	32,724.64 - 52,141.44	NE	CWA
01110	TRAFFIC CONSTRUCTION WORKER I	18	14.829 - 23.628	30,844.32 - 49,146.24	NE	CWA
01111	TRAFFIC SIGNAL SUPERVISOR	35	1,961.60 - 3,124.16	51,001.60 - 81,228.16	EX	
01112	TRAFFIC CONSTRUCTION WORKER II	21	16.213 - 25.818	33,723.04 - 53,701.44	NE	CWA
01113	TRAFFIC SIGN INSTALLER	17	14.398 - 22.939	29,947.84 - 47,713.12	NE	CWA
01114	TRAFFIC SYSTEMS TECHNICIAN I	30	21.154 - 33.688	44,000.32 - 70,071.04	NE	CWA
01115	TRAFFIC CONSTRUCTION SUPERVISOR	33	1,849.36 - 2,944.72	48,083.36 - 76,562.72	EX	
01116	TRAFFIC DATA SUPERVISOR	33	1,849.36 - 2,944.72	48,083.36 - 76,562.72	EX	
01117	TRAFFIC SYSTEMS TECHNICIAN II	32	22.443 - 35.742	46,681.44 - 74,343.36	NE	CWA
01118	TRAFFIC ACCIDENT RECORDS COORDINATOR	22	16.698 - 26.594	34,731.84 - 55,315.52	NE	
01120	TRAFFIC OPERATIONS SUPERINTENDENT	41	2,342.40 - 3,730.24	60,902.40 - 96,986.24	EX	
01123	MANAGER TRAFFIC SIGNAL SYSTEM	49	2,967.36 - 4,725.84	77,151.36 - 122,871.84	EX	
01125	ASSISTANT DIRECTOR TRAFFIC ENGINEERING	E03	3,140.56 - 5,513.84	81,654.56 - 143,359.84	EX	
01126	DIRECTOR TRAFFIC ENGINEERING	E05	3,595.44 - 6,312.72	93,481.44 - 164,130.72	EX	
	<u>PLANNING, BUILDING & ZONING</u>					



PALM BEACH COUNTY PAY PLAN

SPEC #	JOB CLASSIFICATION TABLE	PAY GR	HOURLY OR B/W PAY RANGE	ANNUAL PAY RANGE	O/T	B/U
	<u>Planning</u>					
01201	COUNTY ARCHEOLOGIST	37	2,081.36 - 3,314.56	54,115.36 - 86,178.56	EX	
01205	RESEARCH SPECIALIST	21	1,297.04 - 2,065.44	33,723.04 - 53,701.44	EX	
01208	PLANNING TECHNICIAN	22	16.698 - 26.594	34,731.84 - 55,315.52	NE	
01210	PLANNER I	29	1,643.04 - 2,616.64	42,719.04 - 68,032.64	EX	
01211	PLANNER II	34	1,904.48 - 3,033.36	49,516.48 - 78,867.36	EX	
01213	SENIOR PLANNER	39	2,208.16 - 3,516.16	57,412.16 - 91,420.16	EX	
01214	PRINCIPAL PLANNER	41	2,342.40 - 3,730.24	60,902.40 - 96,986.24	EX	
01216	SITE PLANNER I	29	1,643.04 - 2,616.64	42,719.04 - 68,032.64	EX	
01217	SITE PLANNER II	34	1,904.48 - 3,033.36	49,516.48 - 78,867.36	EX	
01218	SENIOR SITE PLANNER	39	2,208.16 - 3,516.16	57,412.16 - 91,420.16	EX	
01219	PRINCIPAL SITE PLANNER	41	2,342.40 - 3,730.24	60,902.40 - 96,986.24	EX	
	<u>Building & Zoning</u>					
01221	ZONING MANAGER	42	2,412.80 - 3,842.16	62,732.80 - 99,896.16	EX	
	<u>Planning</u>					
01223	CHIEF PLANNER	45	2,636.56 - 4,198.88	68,550.56 - 109,170.88	EX	
01225	DIRECTOR PLANNING	E05	3,595.44 - 6,312.72	93,481.44 - 164,130.72	EX	
01230	DIRECTOR METROPOLITAN PLANNING & ORGANIZATION	E05	3,595.44 - 6,312.72	93,481.44 - 164,130.72	EX	
	<u>Building & Zoning</u>					
01300	INSPECTIONS SCHEDULER I	12	12.422 - 19.787	25,837.76 - 41,156.96	NE	
01301	INSPECTIONS SCHEDULER II	15	13.571 - 21.621	28,227.68 - 44,971.68	NE	
01302	INSPECTIONS SCHEDULER SUPERVISOR	23	1,376.00 - 2,191.28	35,776.00 - 56,973.28	EX	



PALM BEACH COUNTY PAY PLAN

SPEC #	JOB CLASSIFICATION TABLE	PAY GR	HOURLY OR B/W PAY RANGE	ANNUAL PAY RANGE	O/T	B/U
01304	CODES PRODUCT & TRAINING SUPERVISOR	39	2,208.16 - 3,516.16	57,412.16 - 91,420.16	EX	
01305	CONSTRUCTION PLANS EXAMINER I	31	21.785 - 34.696	45,312.80 - 72,167.68	NE	
01306	CONSTRUCTION PLANS EXAMINER II	33	23.117 - 36.809	48,083.36 - 76,562.72	NE	
01308	CONSTRUCTION PLANS EXAMINER III	35	24.520 - 39.052	51,001.60 - 81,228.16	NE	
01309	CODES PRODUCT & TRAINING COORDINATOR	38	2,143.68 - 3,413.68	55,735.68 - 88,755.68	EX	
01310	BUILDING DIVISION BRANCH SUPERVISOR	39	2,208.16 - 3,516.16	57,412.16 - 91,420.16	EX	
01314	BUILDING CONSTRUCTION INSPECTOR I	31	21.785 - 34.696	45,312.80 - 72,167.68	NE	
01315	BUILDING CONSTRUCTION INSPECTOR II	33	23.117 - 36.809	48,083.36 - 76,562.72	NE	
01316	BUILDING CONSTRUCTION INSPECTOR III	35	24.520 - 39.052	51,001.60 - 81,228.16	NE	
01317	CONSTRUCTION INSPECTIONS COORDINATOR	36	2,020.32 - 3,217.84	52,528.32 - 83,663.84	EX	
01318	CHIEF PLUMBING INSPECTOR	39	2,208.16 - 3,516.16	57,412.16 - 91,420.16	EX	
01319	CHIEF ELECTRICAL INSPECTOR	39	2,208.16 - 3,516.16	57,412.16 - 91,420.16	EX	
01320	CHIEF STRUCTURAL INSPECTOR	39	2,208.16 - 3,516.16	57,412.16 - 91,420.16	EX	
01321	CHIEF MECHANICAL INSPECTOR	39	2,208.16 - 3,516.16	57,412.16 - 91,420.16	EX	
01327	CONSTRUCTION SERVICES COORDINATOR	36	2,020.32 - 3,217.84	52,528.32 - 83,663.84	EX	
01335	BUILDING DIVISION OPERATIONS MANAGER	43	2,485.28 - 3,957.76	64,617.28 - 102,901.76	EX	
01336	ASSISTANT DEPUTY OF LARGE PROJECTS	41	2,342.40 - 3,730.24	60,902.40 - 96,986.24	EX	
01337	ASSISTANT DEPUTY OF PLAN REVIEW	41	2,342.40 - 3,730.24	60,902.40 - 96,986.24	EX	
01338	ASSISTANT DEPUTY OF INSPECTIONS	41	2,342.40 - 3,730.24	60,902.40 - 96,986.24	EX	
01339	DEPUTY BUILDING OFFICIAL	46	2,715.60 - 4,325.20	70,605.60 - 112,455.20	EX	
01340	DIRECTOR BUILDING	E04	3,360.40 - 5,899.44	87,370.40 - 153,385.44	EX	
01350	CONTRACTORS CERTIFICATION SPECIALIST	20	15.733 - 25.068	32,724.64 - 52,141.44	NE	



PALM BEACH COUNTY PAY PLAN

SPEC #	JOB CLASSIFICATION TABLE	PAY GR	HOURLY OR B/W PAY RANGE	ANNUAL PAY RANGE	O/T	B/U
01352	CONTRACTORS CERTIFICATION FIELD INVESTIGATOR	28	19.938 - 31.753	41,471.04 - 66,046.24	NE	
01353	SENIOR CONTRACTORS CERTIFICATION FIELD INVESTIGATOR	32	22.443 - 35.742	46,681.44 - 74,343.36	NE	
01354	CONTRACTORS CERTIFICATION COORDINATOR	34	1,904.48 - 3,033.36	49,516.48 - 78,867.36	EX	
01355	DIRECTOR CONTRACTORS CERTIFICATION	E02	2,935.12 - 5,153.12	76,313.12 - 133,981.12	EX	
01357	SITE PLAN TECHNICIAN	24	17.716 - 28.215	36,849.28 - 58,687.20	NE	
01359	ZONING TECHNICIAN	22	16.698 - 26.594	34,731.84 - 55,315.52	NE	
01360	BUILDING PERMIT TECHNICIAN I	19	15.275 - 24.337	31,772.00 - 50,620.96	NE	
01361	BUILDING PERMIT TECHNICIAN II	22	16.698 - 26.594	34,731.84 - 55,315.52	NE	
01362	BUILDING PERMIT TECHNICIAN III	26	1,503.68 - 2,394.64	39,095.68 - 62,260.64	EX	
01363	PERMIT COORDINATOR	38	2,143.68 - 3,413.68	55,735.68 - 88,755.68	EX	
01364	ELECTRONIC PERMIT SPECIALIST	18	14.829 - 23.628	30,844.32 - 49,146.24	NE	
01365	CODE ENFORCEMENT OFFICER	28	19.938 - 31.753	41,471.04 - 66,046.24	NE	
01366	SENIOR CODE ENFORCEMENT OFFICER	32	22.443 - 35.742	46,681.44 - 74,343.36	NE	
01371	DIRECTOR CODE ENFORCEMENT	E02	2,935.12 - 5,153.12	76,313.12 - 133,981.12	EX	
01372	ZONING/LANDSCAPE FIELD REPRESENTATIVE I	28	19.938 - 31.753	41,471.04 - 66,046.24	NE	
01374	SENIOR ZONING/LANDSCAPE FIELD REPRESENTATIVE	34	1,904.48 - 3,033.36	49,516.48 - 78,867.36	EX	
01376	ZONING/LANDSCAPE FIELD REPRESENTATIVE II	30	21.154 - 33.688	44,000.32 - 70,071.04	NE	
01380	DIRECTOR ZONING	E04	3,360.40 - 5,899.44	87,370.40 - 153,385.44	EX	
01382	ADDRESSING TECHNICIAN	19	15.275 - 24.337	31,772.00 - 50,620.96	NE	
01384	PLANNING, ZONING & BUILDING SUPPORT SPECIALIST	32	1,795.44 - 2,859.36	46,681.44 - 74,343.36	EX	
01385	DIRECTOR PLANNING, ZONING & BUILDING ADMINISTRATION	E03	3,140.56 - 5,513.84	81,654.56 - 143,359.84	EX	
01390	DIRECTOR PLANNING, ZONING & BUILDING	E08	4,404.48 - 7,733.28	114,516.48 - 201,065.28	EX	



PALM BEACH COUNTY PAY PLAN

SPEC #	JOB CLASSIFICATION TABLE	PAY GR	HOURLY OR B/W PAY RANGE	ANNUAL PAY RANGE	O/T	B/U
	<u>CABLE TELEVISION</u>					
01400	CABLE TELEVISION COORDINATOR	37	2,081.36 - 3,314.56	54,115.36 - 86,178.56	EX	
01401	CABLE TELEVISION INSPECTOR	24	17.716 - 28.215	36,849.28 - 58,687.20	NE	
01402	SENIOR BROADCAST FACILITY COORDINATOR	36	2,020.32 - 3,217.84	52,528.32 - 83,663.84	EX	
01403	BROADCAST FACILITY COORDINATOR	33	23.117 - 36.809	48,083.36 - 76,562.72	NE	
01404	TV PRODUCER/DIRECTOR	31	21.785 - 34.696	45,312.80 - 72,167.68	NE	
01405	PRODUCTION SPECIALIST I	18	14.829 - 23.628	30,844.32 - 49,146.24	NE	
01406	BROADCAST NETWORK ADMINISTRATOR	40	2,274.48 - 3,621.84	59,136.48 - 94,167.84	EX	
01407	MANAGER EDUCATION & GOVERNMENT STATION	41	2,342.40 - 3,730.24	60,902.40 - 96,986.24	EX	
01408	PRODUCTION COORDINATOR	35	1,961.60 - 3,124.16	51,001.60 - 81,228.16	EX	
01409	PRODUCTION SPECIALIST II	29	20.538 - 32.708	42,719.04 - 68,032.64	NE	
01410	SENIOR CABLE TELEVISION INSPECTOR	26	18.796 - 29.933	39,095.68 - 62,260.64	NE	
01411	CHIEF BROADCAST FACILITIES COORDINATOR	40	2,274.48 - 3,621.84	59,136.48 - 94,167.84	EX	
	<u>INTERNAL AUDITOR</u>					
01520	INTERNAL AUDITOR	00	Contractual		EX	
01526	INTERNAL AUDIT MANAGER	46	2,715.60 - 4,325.20	70,605.60 - 112,455.20	EX	
01528	SENIOR AUDITOR	40	2,274.48 - 3,621.84	59,136.48 - 94,167.84	EX	
01530	AUDITOR	35	1,961.60 - 3,124.16	51,001.60 - 81,228.16	EX	
	<u>EQUAL EMPLOYMENT OPPORTUNITY</u>					
01600	DIRECTOR EQUAL OPPORTUNITY	E05	3,595.44 - 6,312.72	93,481.44 - 164,130.72	EX	
01602	HANDICAPPED ACCESSIBILITY SPECIALIST	26	1,503.68 - 2,394.64	39,095.68 - 62,260.64	EX	
01604	EQUAL OPPORTUNITY SPECIALIST	21	16.213 - 25.818	33,723.04 - 53,701.44	NE	



PALM BEACH COUNTY PAY PLAN

SPEC #	JOB CLASSIFICATION TABLE	PAY GR	HOURLY OR B/W PAY RANGE	ANNUAL PAY RANGE	O/T	B/U
01607	MANAGER EQUAL EMPLOYMENT OFFICE/FAIR HOUSING	41	2,342.40 - 3,730.24	60,902.40 - 96,986.24	EX	
01611	COMPLIANCE INVESTIGATOR I	28	1,595.04 - 2,540.24	41,471.04 - 66,046.24	EX	
01612	COMPLIANCE INVESTIGATOR II	31	1,742.80 - 2,775.68	45,312.80 - 72,167.68	EX	
01613	EQUAL OPPORTUNITY TECHNICIAN	21	16.213 - 25.818	33,723.04 - 53,701.44	NE	
	<u>SMALL BUSINESS ASSISTANCE</u>					
01615	SMALL BUSINESS ASSISTANCE PROGRAMS COORDINATOR	38	2,143.68 - 3,413.68	55,735.68 - 88,755.68	EX	
01617	DIRECTOR OFFICE OF SMALL BUSINESS ASSISTANCE	E02	2,935.12 - 5,153.12	76,313.12 - 133,981.12	EX	
01621	SMALL BUSINESS DEVELOPMENT MANAGER	37	2,081.36 - 3,314.56	54,115.36 - 86,178.56	EX	
01622	SMALL BUSINESS DEVELOPMENT SPECIALIST I	30	1,692.32 - 2,695.04	44,000.32 - 70,071.04	EX	
01623	SMALL BUSINESS DEVELOPMENT SPECIALIST II	34	1,904.48 - 3,033.36	49,516.48 - 78,867.36	EX	
	<u>OFFICE OF FINANCIAL MANAGEMENT</u>					
01701	DIRECTOR OFFICE OF FINANCIAL MANAGEMENT AND BUDGET	E09	4,713.12 - 8,274.40	122,541.12 - 215,134.40	EX	
01702	DIRECTOR FINANCIAL MANAGEMENT	E06	3,847.28 - 6,754.16	100,029.28 - 175,608.16	EX	
01704	IMPACT FEE MANAGER	46	2,715.60 - 4,325.20	70,605.60 - 112,455.20	EX	
01705	MANAGEMENT & OPERATIONS CONSULTANT	35	1,961.60 - 3,124.16	51,001.60 - 81,228.16	EX	
01710	SENIOR MANAGEMENT & OPERATIONS CONSULTANT	40	2,274.48 - 3,621.84	59,136.48 - 94,167.84	EX	
01720	FIXED ASSETS SPECIALIST - SURPLUS OPERATIONS	16	13.979 - 22.263	29,076.32 - 46,307.04	NE	
01721	FIXED ASSETS SPECIALIST - INVENTORY COORDINATION	16	13.979 - 22.263	29,076.32 - 46,307.04	NE	
01724	COORDINATOR - FIXED ASSETS INVENTORIES	20	15.733 - 25.068	32,724.64 - 52,141.44	NE	
01725	FIXED ASSETS MANAGER	44	2,559.92 - 4,076.80	66,557.92 - 105,996.80	EX	
01726	MANAGER SURPLUS ASSETS DISPOSAL PROGRAM	39	2,208.16 - 3,516.16	57,412.16 - 91,420.16	EX	
01770	CONTRACT ANALYST	36	2,020.32 - 3,217.84	52,528.32 - 83,663.84	EX	



PALM BEACH COUNTY PAY PLAN

SPEC #	JOB CLASSIFICATION TABLE	PAY GR	HOURLY OR B/W PAY RANGE	ANNUAL PAY RANGE	O/T	B/U
01771	GRANT/BUDGET ANALYST	40	2,274.48 - 3,621.84	59,136.48 - 94,167.84	EX	
01775	DIRECTOR CONTRACT DEVELOPMENT & CONTROL	E03	3,140.56 - 5,513.84	81,654.56 - 143,359.84	EX	
	<u>FACILITIES DEVELOPMENT & OPERATIONS</u>					
01801	DIRECTOR CAPITAL IMPROVEMENTS	E06	3,847.28 - 6,754.16	100,029.28 - 175,608.16	EX	
01803	SENIOR REGISTERED ARCHITECT	46	2,715.60 - 4,325.20	70,605.60 - 112,455.20	EX	
01806	SPACE & INTERIOR PLANNER	40	2,274.48 - 3,621.84	59,136.48 - 94,167.84	EX	
01808	FACILITIES/SYSTEMS PROJECT MANAGER	37	2,081.36 - 3,314.56	54,115.36 - 86,178.56	EX	
01810	MANAGER FACILITIES COMPLIANCE	46	2,715.60 - 4,325.20	70,605.60 - 112,455.20	EX	
01812	FACILITIES EVALUATOR	26	1,503.68 - 2,394.64	39,095.68 - 62,260.64	EX	
01813	PROJECT MANAGER	E02	2,935.12 - 5,153.12	76,313.12 - 133,981.12	EX	
01814	REGULATORY SPECIALIST	38	2,143.68 - 3,413.68	55,735.68 - 88,755.68	EX	
01815	BUSINESS & COMMUNITY AGREEMENTS MANAGER	E02	2,935.12 - 5,153.12	76,313.12 - 133,981.12	EX	
01816	ARCHITECTURAL FIELD REPRESENTATIVE I	35	1,961.60 - 3,124.16	51,001.60 - 81,228.16	EX	
01817	ARCHITECTURAL FIELD REPRESENTATIVE II	40	2,274.48 - 3,621.84	59,136.48 - 94,167.84	EX	
01818	DIRECTOR FACILITIES SERVICES	E05	3,595.44 - 6,312.72	93,481.44 - 164,130.72	EX	
01820	DIRECTOR FACILITIES DEVELOPMENT & OPERATIONS	E08	4,404.48 - 7,733.28	114,516.48 - 201,065.28	EX	
01821	DIRECTOR FACILITIES OPERATIONS	E06	3,847.28 - 6,754.16	100,029.28 - 175,608.16	EX	
01825	DIRECTOR PROPERTY & REAL ESTATE MANAGEMENT	E04	3,360.40 - 5,899.44	87,370.40 - 153,385.44	EX	
01827	ASSISTANT DIRECTOR PROPERTY & REAL ESTATE MANAGEMENT	E02	2,935.12 - 5,153.12	76,313.12 - 133,981.12	EX	
01836	REAL ESTATE TECHNICIAN	23	17.200 - 27.391	35,776.00 - 56,973.28	NE	
01845	REAL ESTATE SPECIALIST	34	1,904.48 - 3,033.36	49,516.48 - 78,867.36	EX	
01847	REAL ESTATE CONTRACT ANALYST	36	2,020.32 - 3,217.84	52,528.32 - 83,663.84	EX	



PALM BEACH COUNTY PAY PLAN

SPEC #	JOB CLASSIFICATION TABLE	PAY GR	HOURLY OR B/W PAY RANGE	ANNUAL PAY RANGE	O/T	B/U
01849	MANAGER REAL ESTATE	44	2,559.92 - 4,076.80	66,557.92 - 105,996.80	EX	
01850	MANAGER PROPERTY MANAGEMENT	44	2,559.92 - 4,076.80	66,557.92 - 105,996.80	EX	
01851	PROPERTY SPECIALIST	34	1,904.48 - 3,033.36	49,516.48 - 78,867.36	EX	
	<u>ENVIRONMENTAL RESOURCES</u>					
01930	HYDROGEOLOGIST	38	2,143.68 - 3,413.68	55,735.68 - 88,755.68	EX	
01931	SENIOR HYDROGEOLOGIST	41	2,342.40 - 3,730.24	60,902.40 - 96,986.24	EX	
01936	ENVIRONMENTAL TECHNICIAN I	22	16.698 - 26.594	34,731.84 - 55,315.52	NE	
01938	ENVIRONMENTAL TECHNICIAN II	24	17.716 - 28.215	36,849.28 - 58,687.20	NE	
01940	ENVIRONMENTALIST I	26	1,503.68 - 2,394.64	39,095.68 - 62,260.64	EX	
01941	ENVIRONMENTALIST II	29	1,643.04 - 2,616.64	42,719.04 - 68,032.64	EX	
01942	ENVIRONMENTAL ANALYST	33	1,849.36 - 2,944.72	48,083.36 - 76,562.72	EX	
01943	SENIOR ENVIRONMENTAL ANALYST	36	2,020.32 - 3,217.84	52,528.32 - 83,663.84	EX	
01944	ENVIRONMENTAL PROGRAM SUPERVISOR	39	2,208.16 - 3,516.16	57,412.16 - 91,420.16	EX	
01945	ENVIRONMENTAL MANAGER	46	2,715.60 - 4,325.20	70,605.60 - 112,455.20	EX	
01946	DEPUTY DIRECTOR ENVIRONMENTAL RESOURCES MANAGEMENT	E05	3,595.44 - 6,312.72	93,481.44 - 164,130.72	EX	
01947	COASTAL GEOLOGIST	38	2,143.68 - 3,413.68	55,735.68 - 88,755.68	EX	
01948	DIRECTOR FINANCIAL & SUPPORT SERVICES	E02	2,935.12 - 5,153.12	76,313.12 - 133,981.12	EX	
01949	DIRECTOR ENVIRONMENTAL	E04	3,360.40 - 5,899.44	87,370.40 - 153,385.44	EX	
01950	DIRECTOR ENVIRONMENTAL RESOURCES MANAGEMENT	E07	4,116.40 - 7,227.12	107,026.40 - 187,905.12	EX	
01956	DIRECTOR MOSQUITO CONTROL	E01	2,743.12 - 4,848.24	71,321.12 - 126,054.24	EX	
01957	MOSQUITO CONTROL INSPECTOR	17	14.398 - 22.939	29,947.84 - 47,713.12	NE	CWA
01960	LAND MANAGEMENT ASSISTANT	19	15.275 - 24.337	31,772.00 - 50,620.96	NE	CWA



PALM BEACH COUNTY PAY PLAN

SPEC #	JOB CLASSIFICATION TABLE	PAY GR	HOURLY OR B/W PAY RANGE	ANNUAL PAY RANGE	O/T	B/U
	<u>LEISURE SERVICES</u>					
	<u>Parks</u>					
02001	CERTIFIED PLAYGROUND SAFETY INSPECTOR	23	17.200 - 27.391	35,776.00 - 56,973.28	NE	CWA
02005	TREE TRIMMER	19	15.275 - 24.337	31,772.00 - 50,620.96	NE	CWA
02008	CHEMICAL SPRAY TECHNICIAN	20	15.733 - 25.068	32,724.64 - 52,141.44	NE	CWA
02009	CAMPGROUND ATTENDANT	13	12.790 - 20.372	26,603.20 - 42,373.76	NE	
02012	PARK/POOL ATTENDANT	09	11.370 - 18.107	23,649.60 - 37,662.56	NE	
02015	PARK RANGER	20	15.733 - 25.068	32,724.64 - 52,141.44	NE	CWA
02017	PARK RANGER SUPERVISOR	25	18.244 - 29.060	37,947.52 - 60,444.80	NE	
02019	CHIEF OF PARKS SECURITY	35	1,961.60 - 3,124.16	51,001.60 - 81,228.16	EX	
02020	PARKS SUPERVISOR	31	1,742.80 - 2,775.68	45,312.80 - 72,167.68	EX	
02022	PARKS DISTRICT MANAGER	34	1,904.48 - 3,033.36	49,516.48 - 78,867.36	EX	
02023	PARKS DISTRICT OPERATIONS SUPERINTENDENT	42	2,412.80 - 3,842.16	62,732.80 - 99,896.16	EX	
02024	PARKS RESOURCE SUPERINTENDENT	34	1,904.48 - 3,033.36	49,516.48 - 78,867.36	EX	
02025	RESOURCE DEVELOPMENT SUPERVISOR	32	1,795.44 - 2,859.36	46,681.44 - 74,343.36	EX	
02026	PARKS OPERATIONS SUPERINTENDENT	38	2,143.68 - 3,413.68	55,735.68 - 88,755.68	EX	
02027	CONTRACTS/GRANTS COORDINATOR	32	1,795.44 - 2,859.36	46,681.44 - 74,343.36	EX	
02028	MANAGER PARKS SUPPORT SERVICES	37	2,081.36 - 3,314.56	54,115.36 - 86,178.56	EX	
02029	MANAGER PARKS ADMINISTRATIVE SERVICES	37	2,081.36 - 3,314.56	54,115.36 - 86,178.56	EX	
02031	PARKS CONTRACT EVALUATOR	30	1,692.32 - 2,695.04	44,000.32 - 70,071.04	EX	
02035	LANDSCAPE ARCHITECT	38	2,143.68 - 3,413.68	55,735.68 - 88,755.68	EX	
02038	PARKS PLANNING & DESIGN SUPERINTENDENT	42	2,412.80 - 3,842.16	62,732.80 - 99,896.16	EX	



PALM BEACH COUNTY PAY PLAN

SPEC #	JOB CLASSIFICATION TABLE	PAY GR	HOURLY OR B/W PAY RANGE	ANNUAL PAY RANGE	O/T	B/U
	<u>Recreation</u>					
02039	PARKS & RECREATION DISTRICT MANAGER	36	2,020.32 - 3,217.84	52,528.32 - 83,663.84	EX	
02100	POOL LIFEGUARD	13	12.790 - 20.372	26,603.20 - 42,373.76	NE	CWA
02101	OCEAN LIFEGUARD	18	14.829 - 23.628	30,844.32 - 49,146.24	NE	CWA
02102	OCEAN RESCUE LIEUTENANT	22	16.698 - 26.594	34,731.84 - 55,315.52	NE	CWA
02103	DISTRICT OCEAN RESCUE SUPERVISOR	33	1,849.36 - 2,944.72	48,083.36 - 76,562.72	EX	
02104	OCEAN RESCUE CAPTAIN	27	1,548.72 - 2,466.08	40,266.72 - 64,118.08	EX	
02110	OCEAN RESCUE CHIEF	37	2,081.36 - 3,314.56	54,115.36 - 86,178.56	EX	
02116	AQUATICS SUPERVISOR	42	2,412.80 - 3,842.16	62,732.80 - 99,896.16	EX	
02117	OCEAN RESCUE TRAINING OFFICER	25	1,459.52 - 2,324.80	37,947.52 - 60,444.80	EX	
02120	AQUATIC PROGRAMS COORDINATOR	35	1,961.60 - 3,124.16	51,001.60 - 81,228.16	EX	
02123	REGISTRATION CLERK	13	12.790 - 20.372	26,603.20 - 42,373.76	NE	
02125	RECREATION SPECIALIST I	19	1,222.00 - 1,946.96	31,772.00 - 50,620.96	EX	
02126	RECREATION SPECIALIST II	22	1,335.84 - 2,127.52	34,731.84 - 55,315.52	EX	
02127	RECREATION PROGRAMS COORDINATOR	33	1,849.36 - 2,944.72	48,083.36 - 76,562.72	EX	
02128	RECREATION SPECIALIST III	24	1,417.28 - 2,257.20	36,849.28 - 58,687.20	EX	
02129	RECREATION PROGRAMS SUPERVISOR	40	2,274.48 - 3,621.84	59,136.48 - 94,167.84	EX	
02130	DIRECTOR RECREATION SERVICES	E03	3,140.56 - 5,513.84	81,654.56 - 143,359.84	EX	
02131	ADMINISTRATOR MORIKAMI PARK	42	2,412.80 - 3,842.16	62,732.80 - 99,896.16	EX	
02132	CURATOR OF JAPANESE ART	27	1,548.72 - 2,466.08	40,266.72 - 64,118.08	EX	
02133	CURATOR MORIKAMI MUSEUM	35	1,961.60 - 3,124.16	51,001.60 - 81,228.16	EX	
02134	DIRECTOR SPECIAL FACILITIES & BEACHES	E03	3,140.56 - 5,513.84	81,654.56 - 143,359.84	EX	



PALM BEACH COUNTY PAY PLAN

SPEC #	JOB CLASSIFICATION TABLE	PAY GR	HOURLY OR B/W PAY RANGE	ANNUAL PAY RANGE	O/T	B/U
02135	GOLF ATTENDANT	09	11.370 - 18.107	23,649.60 - 37,662.56	NE	CWA
02136	GOLF COURSE MANAGER	45	2,636.56 - 4,198.88	68,550.56 - 109,170.88	EX	
02138	MORIKAMI MUSEUM OPERATIONS SUPERVISOR	30	1,692.32 - 2,695.04	44,000.32 - 70,071.04	EX	
02139	DIRECTOR PARKS OPERATIONS	E03	3,140.56 - 5,513.84	81,654.56 - 143,359.84	EX	
02140	DIRECTOR PARKS & RECREATION	E07	4,116.40 - 7,227.12	107,026.40 - 187,905.12	EX	
02141	ASSISTANT DIRECTOR PARKS & RECREATION	E04	3,360.40 - 5,899.44	87,370.40 - 153,385.44	EX	
02142	DIRECTOR PARKS FINANCIAL & SUPPORT SERVICES	E02	2,935.12 - 5,153.12	76,313.12 - 133,981.12	EX	
02143	MANAGER PARKS & RECREATION SUPPORT SERVICES	37	2,081.36 - 3,314.56	54,115.36 - 86,178.56	EX	
02144	RECREATION FACILITY MANAGER I	27	1,548.72 - 2,466.08	40,266.72 - 64,118.08	EX	
02145	RECREATION FACILITY MANAGER II	30	1,692.32 - 2,695.04	44,000.32 - 70,071.04	EX	
02146	MANAGER PUBLIC INFORMATION SERVICES	36	2,020.32 - 3,217.84	52,528.32 - 83,663.84	EX	
02148	NATURALIST	22	1,335.84 - 2,127.52	34,731.84 - 55,315.52	EX	
02149	GOLF OPERATIONS SUPERVISOR	46	2,715.60 - 4,325.20	70,605.60 - 112,455.20	EX	
02152	NATURE CENTER MANAGER II	31	1,742.80 - 2,775.68	45,312.80 - 72,167.68	EX	
02154	EQUESTRIAN FACILITY MANAGER	42	2,412.80 - 3,842.16	62,732.80 - 99,896.16	EX	
02160	CONCESSION SUPERVISOR	20	15.733 - 25.068	32,724.64 - 52,141.44	NE	
02162	WATERPARK OPERATIONS SPECIALIST	18	14.829 - 23.628	30,844.32 - 49,146.24	NE	
02163	GOLF MAINTENANCE SUPERVISOR	25	18.244 - 29.060	37,947.52 - 60,444.80	NE	
02164	ASSISTANT GOLF FACILITY MANAGER	30	1,692.32 - 2,695.04	44,000.32 - 70,071.04	EX	
02165	DIRECTOR AQUATICS	E03	3,140.56 - 5,513.84	81,654.56 - 143,359.84	EX	
02166	GOLF FACILITY MANAGER	33	1,849.36 - 2,944.72	48,083.36 - 76,562.72	EX	
02167	PARKS COORDINATOR	34	1,904.48 - 3,033.36	49,516.48 - 78,867.36	EX	



PALM BEACH COUNTY PAY PLAN

SPEC #	JOB CLASSIFICATION TABLE	PAY GR	HOURLY OR B/W PAY RANGE	ANNUAL PAY RANGE	O/T	B/U
	<u>Library</u>					
02200	LIBRARY ASSOCIATE DRIVER	15	13.571 - 21.621	28,227.68 - 44,971.68	NE	CWA
02201	LIBRARY PAGE	09	11.370 - 18.107	23,649.60 - 37,662.56	NE	
02202	LIBRARY ASSOCIATE I	13	12.790 - 20.372	26,603.20 - 42,373.76	NE	
02203	LIBRARY ASSOCIATE II	17	14.398 - 22.939	29,947.84 - 47,713.12	NE	
02204	LIBRARY ASSOCIATE III	19	15.275 - 24.337	31,772.00 - 50,620.96	NE	
02206	LIBRARY ASSOCIATE IV	21	1,297.04 - 2,065.44	33,723.04 - 53,701.44	EX	
02207	LIBRARY ASSOCIATE V	27	1,548.72 - 2,466.08	40,266.72 - 64,118.08	EX	
02220	LIBRARY TECHNICIAN	19	15.275 - 24.337	31,772.00 - 50,620.96	NE	
02223	LIBRARY TRAINING & TECHNICAL ASSISTANCE SPECIALIST	27	1,548.72 - 2,466.08	40,266.72 - 64,118.08	EX	
02226	LIBRARY TRAINING & TECHNICAL ASSISTANCE SUPERVISOR	31	1,742.80 - 2,775.68	45,312.80 - 72,167.68	EX	
02228	LIBRARIAN TRAINEE	25	18.244 - 29.060	37,947.52 - 60,444.80	NE	
02230	LIBRARIAN I	28	1,595.04 - 2,540.24	41,471.04 - 66,046.24	EX	
02231	LIBRARIAN II	30	1,692.32 - 2,695.04	44,000.32 - 70,071.04	EX	
02235	LIBRARIAN III	33	1,849.36 - 2,944.72	48,083.36 - 76,562.72	EX	
02237	LIBRARIAN IV	36	2,020.32 - 3,217.84	52,528.32 - 83,663.84	EX	
02239	LIBRARIAN V	38	2,143.68 - 3,413.68	55,735.68 - 88,755.68	EX	
02243	BRANCH PUBLIC SERVICE COORDINATOR	42	2,412.80 - 3,842.16	62,732.80 - 99,896.16	EX	
02244	DIRECTOR LIBRARY FINANCE & ADMINISTRATION	E02	2,935.12 - 5,153.12	76,313.12 - 133,981.12	EX	
02249	ASSISTANT DIRECTOR LIBRARY	E04	3,360.40 - 5,899.44	87,370.40 - 153,385.44	EX	
02250	DIRECTOR LIBRARY	E07	4,116.40 - 7,227.12	107,026.40 - 187,905.12	EX	
	<u>COMMUNITY SERVICES AND RELATED</u>					



PALM BEACH COUNTY PAY PLAN

SPEC #	JOB CLASSIFICATION TABLE	PAY GR	HOURLY OR B/W PAY RANGE	ANNUAL PAY RANGE	O/T	B/U
	<u>Human and Senior Services</u>					
03001	SENIOR SERVICE AIDE	12	12.422 - 19.787	25,837.76 - 41,156.96	NE	
03008	HUMAN SERVICES QUALITY ASSURANCE COORDINATOR	34	1,904.48 - 3,033.36	49,516.48 - 78,867.36	EX	
03009	CASEWORK SUPERVISOR	30	1,692.32 - 2,695.04	44,000.32 - 70,071.04	EX	
03010	HUMAN SERVICES OPERATIONS SUPERVISOR	34	1,904.48 - 3,033.36	49,516.48 - 78,867.36	EX	
03017	NUTRITION SERVICES COORDINATOR	28	1,595.04 - 2,540.24	41,471.04 - 66,046.24	EX	
03018	SENIOR NUTRITION SERVICES SPECIALIST	22	1,335.84 - 2,127.52	34,731.84 - 55,315.52	EX	
03023	HUMAN SERVICES PROGRAM COORDINATOR	30	1,692.32 - 2,695.04	44,000.32 - 70,071.04	EX	
03025	TRANSPORTATION SPECIALIST	22	16.698 - 26.594	34,731.84 - 55,315.52	NE	
03032	OUTREACH/DIRECT SERVICES WORKER	15	13.571 - 21.621	28,227.68 - 44,971.68	NE	
03033	SITE MANAGER	14	13.178 - 20.993	27,410.24 - 43,665.44	NE	
03034	ASSISTANT COMMUNITY CENTER MANAGER	15	13.571 - 21.621	28,227.68 - 44,971.68	NE	
03035	COMMUNITY CENTER MANAGER	24	1,417.28 - 2,257.20	36,849.28 - 58,687.20	EX	
03037	SENIOR SERVICES OPERATIONS SUPERVISOR	34	1,904.48 - 3,033.36	49,516.48 - 78,867.36	EX	
03038	SENIOR SERVICES QUALITY ASSURANCE COORDINATOR	34	1,904.48 - 3,033.36	49,516.48 - 78,867.36	EX	
03039	DIRECTOR SENIOR SERVICES	E03	3,140.56 - 5,513.84	81,654.56 - 143,359.84	EX	
03040	HOMELESS PROGRAM & CONTRACT MANAGER	34	1,904.48 - 3,033.36	49,516.48 - 78,867.36	EX	
03050	ASSISTANT VETERANS' SERVICES OFFICER	20	15.733 - 25.068	32,724.64 - 52,141.44	NE	
03055	VETERANS' SERVICES OFFICER	34	1,904.48 - 3,033.36	49,516.48 - 78,867.36	EX	
03056	CASE MANAGER TRAINEE	19	15.275 - 24.337	31,772.00 - 50,620.96	NE	
03057	CASE MANAGER I	22	16.698 - 26.594	34,731.84 - 55,315.52	NE	
03058	CASE MANAGER II	25	1,459.52 - 2,324.80	37,947.52 - 60,444.80	EX	



PALM BEACH COUNTY PAY PLAN

SPEC #	JOB CLASSIFICATION TABLE	PAY GR	HOURLY OR B/W PAY RANGE	ANNUAL PAY RANGE	O/T	B/U
03059	CASE MANAGER III <u>Youth Services</u>	27	1,548.72 - 2,466.08	40,266.72 - 64,118.08	EX	
03103	JUVENILE RESIDENCE TECHNICIAN	18	14.829 - 23.628	30,844.32 - 49,146.24	NE	
03105	LEGAL CLERK	15	13.571 - 21.621	28,227.68 - 44,971.68	NE	
03107	CASE COORDINATOR	24	17.716 - 28.215	36,849.28 - 58,687.20	NE	
03109	VISITATION MONITOR	22	16.698 - 26.594	34,731.84 - 55,315.52	NE	
03122	JUVENILE VICTIM ASSISTANCE INVESTIGATOR	25	1,459.52 - 2,324.80	37,947.52 - 60,444.80	EX	
03123	RESIDENTIAL YOUTH COUNSELOR	25	1,459.52 - 2,324.80	37,947.52 - 60,444.80	EX	
03124	FAMILY COUNSELOR	25	1,459.52 - 2,324.80	37,947.52 - 60,444.80	EX	
03126	FAMILY THERAPIST	28	1,595.04 - 2,540.24	41,471.04 - 66,046.24	EX	
03127	LICENSED FAMILY THERAPIST	32	1,795.44 - 2,859.36	46,681.44 - 74,343.36	EX	
03128	RESIDENTIAL YOUTH AFFAIRS COORDINATOR	30	1,692.32 - 2,695.04	44,000.32 - 70,071.04	EX	
03130	YOUTH AFFAIRS COORDINATOR	34	1,904.48 - 3,033.36	49,516.48 - 78,867.36	EX	
03131	JUVENILE ALTERNATIVE SANCTIONS COORDINATOR	33	1,849.36 - 2,944.72	48,083.36 - 76,562.72	EX	
03132	RESIDENTIAL COUNSELING COORDINATOR	34	1,904.48 - 3,033.36	49,516.48 - 78,867.36	EX	
03133	CUSTODY EVALUATION SPECIALIST	28	1,595.04 - 2,540.24	41,471.04 - 66,046.24	EX	
03135	YOUTH AFFAIRS SENIOR PROGRAM MANAGER	36	2,020.32 - 3,217.84	52,528.32 - 83,663.84	EX	
03138	PSYCHOLOGIST	42	2,412.80 - 3,842.16	62,732.80 - 99,896.16	EX	
03139	CHIEF PSYCHOLOGIST	47	2,797.12 - 4,454.40	72,725.12 - 115,814.40	EX	
03140	CHIEF COMMUNITY BASED CLINICAL SERVICES	45	2,636.56 - 4,198.88	68,550.56 - 109,170.88	EX	
03142	CHIEF RESIDENTIAL CLINICAL SERVICES	45	2,636.56 - 4,198.88	68,550.56 - 109,170.88	EX	
03144	CHIEF OF CLINICAL SERVICES EDUCATION & TRAINING	45	2,636.56 - 4,198.88	68,550.56 - 109,170.88	EX	



PALM BEACH COUNTY PAY PLAN

SPEC #	JOB CLASSIFICATION TABLE	PAY GR	HOURLY OR B/W PAY RANGE	ANNUAL PAY RANGE	O/T	B/U
03160	DIRECTOR YOUTH AFFAIRS <u>Community Services Administration</u>	E03	3,140.56 - 5,513.84	81,654.56 - 143,359.84	EX	
03165	PROGRAM MONITOR	26	1,503.68 - 2,394.64	39,095.68 - 62,260.64	EX	
03170	DIRECTOR HUMAN SERVICES	E03	3,140.56 - 5,513.84	81,654.56 - 143,359.84	EX	
03171	RYAN WHITE PROGRAM MANAGER	35	1,961.60 - 3,124.16	51,001.60 - 81,228.16	EX	
03172	RYAN WHITE QUALITY MANAGEMENT COORDINATOR	34	1,904.48 - 3,033.36	49,516.48 - 78,867.36	EX	
03177	MANAGER PLANNING & EVALUATION	46	2,715.60 - 4,325.20	70,605.60 - 112,455.20	EX	
03180	DIRECTOR COMMUNITY SERVICES	E07	4,116.40 - 7,227.12	107,026.40 - 187,905.12	EX	
03181	COMMUNITY SERVICES PROGRAM EVALUATOR <u>Migrant Program</u>	34	1,904.48 - 3,033.36	49,516.48 - 78,867.36	EX	
03210	FARMWORKER COUNSELOR	23	17.200 - 27.391	35,776.00 - 56,973.28	NE	
03220	JTPA PROGRAM COORDINATOR <u>Community Action Program</u>	28	19.938 - 31.753	41,471.04 - 66,046.24	NE	
03231	COMMUNITY ACTION SPECIALIST	13	12.790 - 20.372	26,603.20 - 42,373.76	NE	
03232	COMMUNITY ACTION SPECIALIST III	18	14.829 - 23.628	30,844.32 - 49,146.24	NE	
03233	SENIOR COMMUNITY ACTION SPECIALIST	22	1,335.84 - 2,127.52	34,731.84 - 55,315.52	EX	
03234	COMMUNITY ACTION PROGRAM COORDINATOR	34	1,904.48 - 3,033.36	49,516.48 - 78,867.36	EX	
03235	COMMUNITY ACTION LIHEAP SUPERVISOR	28	1,595.04 - 2,540.24	41,471.04 - 66,046.24	EX	
03236	SENIOR FAMILY DEVELOPMENT SPECIALIST <u>Head Start</u>	27	1,548.72 - 2,466.08	40,266.72 - 64,118.08	EX	
03303	FAMILY SERVICES COORDINATOR	30	1,692.32 - 2,695.04	44,000.32 - 70,071.04	EX	
03305	CHILD DEVELOPMENT ASSISTANT	11	12.059 - 19.212	25,082.72 - 39,960.96	NE	CWA



PALM BEACH COUNTY PAY PLAN

SPEC #	JOB CLASSIFICATION TABLE	PAY GR	HOURLY OR B/W PAY RANGE	ANNUAL PAY RANGE	O/T	B/U
03307	SCHOOL BUS RIDER	09	11.370 - 18.107	23,649.60 - 37,662.56	NE	CWA
03309	PARENT INVOLVEMENT SPECIALIST	18	14.829 - 23.628	30,844.32 - 49,146.24	NE	
03310	CHILD DEVELOPMENT ASSOCIATE I	13	12.790 - 20.372	26,603.20 - 42,373.76	NE	CWA
03311	NUTRITION SERVICES SPECIALIST	20	15.733 - 25.068	32,724.64 - 52,141.44	NE	
03312	HEAD START FIELD OPERATIONS SUPERVISOR	34	1,904.48 - 3,033.36	49,516.48 - 78,867.36	EX	
03313	CHILD DEVELOPMENT ASSOCIATE II	17	14.398 - 22.939	29,947.84 - 47,713.12	NE	
03315	SCHOOL BUS RIDER/FOOD SERVICE AIDE	09	11.370 - 18.107	23,649.60 - 37,662.56	NE	CWA
03319	FAMILY SERVICES SPECIALIST I	18	14.829 - 23.628	30,844.32 - 49,146.24	NE	
03320	FAMILY SERVICES SPECIALIST II	22	1,335.84 - 2,127.52	34,731.84 - 55,315.52	EX	
03321	HEALTH SERVICES SUPERVISOR	32	1,795.44 - 2,859.36	46,681.44 - 74,343.36	EX	
03322	EARLY CHILDHOOD DEVELOPMENT SERVICES SUPERVISOR	32	1,795.44 - 2,859.36	46,681.44 - 74,343.36	EX	
03324	CURRICULUM SPECIALIST	24	1,417.28 - 2,257.20	36,849.28 - 58,687.20	EX	
03325	NUTRITION COORDINATOR	30	1,692.32 - 2,695.04	44,000.32 - 70,071.04	EX	
03327	DISABILITY SERVICES COORDINATOR	30	1,692.32 - 2,695.04	44,000.32 - 70,071.04	EX	
03328	TRAINING & RESOURCE INCLUSION SUPERVISOR	32	1,795.44 - 2,859.36	46,681.44 - 74,343.36	EX	
03329	DIRECTOR HEAD START	E03	3,140.56 - 5,513.84	81,654.56 - 143,359.84	EX	
03330	ASSISTANT DIRECTOR HEAD START	44	2,559.92 - 4,076.80	66,557.92 - 105,996.80	EX	
03331	TRAINING & TECHNICAL ASSISTANCE COORDINATOR	30	1,692.32 - 2,695.04	44,000.32 - 70,071.04	EX	
03332	DELEGATE AGENCY COORDINATOR	30	1,692.32 - 2,695.04	44,000.32 - 70,071.04	EX	
03334	EARLY HEAD START SUPERVISOR	32	1,795.44 - 2,859.36	46,681.44 - 74,343.36	EX	
03335	MENTAL HEALTH COORDINATOR	30	1,692.32 - 2,695.04	44,000.32 - 70,071.04	EX	
03336	HEALTH SERVICES COORDINATOR	30	1,692.32 - 2,695.04	44,000.32 - 70,071.04	EX	



PALM BEACH COUNTY PAY PLAN

SPEC #	JOB CLASSIFICATION TABLE	PAY GR	HOURLY OR B/W PAY RANGE	ANNUAL PAY RANGE	O/T	B/U
03337	EARLY HEAD START FAMILY SERVICES COORDINATOR	30	1,692.32 - 2,695.04	44,000.32 - 70,071.04	EX	
03339	HEAD START TRAINING SPECIALIST	26	1,503.68 - 2,394.64	39,095.68 - 62,260.64	EX	
03340	EDUCATION COORDINATOR	30	1,692.32 - 2,695.04	44,000.32 - 70,071.04	EX	
03341	ERSEA SUPERVISOR	32	1,795.44 - 2,859.36	46,681.44 - 74,343.36	EX	
03345	HEAD START CENTER MANAGER I	20	1,258.64 - 2,005.44	32,724.64 - 52,141.44	EX	
03346	HEAD START CENTER MANAGER II	26	1,503.68 - 2,394.64	39,095.68 - 62,260.64	EX	
03347	HEAD START CENTER MANAGER III	28	1,595.04 - 2,540.24	41,471.04 - 66,046.24	EX	
03348	FAMILY & PARENT SERVICES SUPERVISOR	32	1,795.44 - 2,859.36	46,681.44 - 74,343.36	EX	
03350	OUTCOME & QUALITY ASSURANCE SUPERVISOR	34	1,904.48 - 3,033.36	49,516.48 - 78,867.36	EX	
03351	ERSEA COMMUNITY PARTNERSHIP COORDINATOR	30	1,692.32 - 2,695.04	44,000.32 - 70,071.04	EX	
03352	FAMILY SERVICES SPECIALIST III	26	1,503.68 - 2,394.64	39,095.68 - 62,260.64	EX	
03353	BEHAVIORAL SPECIALIST	27	1,548.72 - 2,466.08	40,266.72 - 64,118.08	EX	
03354	VOLUNTEER PRE-KINDERGARTEN PROGRAM COORDINATOR	30	1,692.32 - 2,695.04	44,000.32 - 70,071.04	EX	
	<u>HOUSING & COMMUNITY DEVELOPMENT</u>					
03403	MANAGER HOUSING & REHABILITATION	41	2,342.40 - 3,730.24	60,902.40 - 96,986.24	EX	
03405	REHABILITATION LOAN PROCESSOR	20	1,258.64 - 2,005.44	32,724.64 - 52,141.44	EX	
03406	HOME PROGRAM SPECIALIST	22	1,335.84 - 2,127.52	34,731.84 - 55,315.52	EX	
03408	REHABILITATION COMPLIANCE INSPECTOR	29	1,643.04 - 2,616.64	42,719.04 - 68,032.64	EX	
03409	COMMUNITY DEVELOPMENT PROJECT COORDINATOR	32	1,795.44 - 2,859.36	46,681.44 - 74,343.36	EX	
03418	CAPITAL IMPROVEMENTS PROJECT SPECIALIST	32	1,795.44 - 2,859.36	46,681.44 - 74,343.36	EX	
03419	HOME PROGRAM COORDINATOR	35	1,961.60 - 3,124.16	51,001.60 - 81,228.16	EX	
03420	COMMUNITY DEVELOPMENT PROJECT SPECIALIST	30	1,692.32 - 2,695.04	44,000.32 - 70,071.04	EX	



PALM BEACH COUNTY PAY PLAN

SPEC #	JOB CLASSIFICATION TABLE	PAY GR	HOURLY OR B/W PAY RANGE	ANNUAL PAY RANGE	O/T	B/U
03422	MANAGER PLANNING & ECONOMIC DEVELOPMENT	43	2,485.28 - 3,957.76	64,617.28 - 102,901.76	EX	
03424	MANAGER AFFORDABLE HOUSING	41	2,342.40 - 3,730.24	60,902.40 - 96,986.24	EX	
03426	DIRECTOR HOUSING & COMMUNITY DEVELOPMENT	E06	3,847.28 - 6,754.16	100,029.28 - 175,608.16	EX	
03427	PLANNING ASSISTANT	20	15.733 - 25.068	32,724.64 - 52,141.44	NE	
03428	DISASTER RECOVERY SPECIALIST	32	1,795.44 - 2,859.36	46,681.44 - 74,343.36	EX	
03429	DRI CAPITAL IMPROVEMENTS PROJECT SPECIALIST	32	1,795.44 - 2,859.36	46,681.44 - 74,343.36	EX	
	<u>COOPERATIVE EXTENSION SERVICES</u>					
03500	COUNTY EXTENSION AGENT	30	1,692.32 - 2,695.04	44,000.32 - 70,071.04	EX	
03504	PROGRAM ASSISTANT	12	12.422 - 19.787	25,837.76 - 41,156.96	NE	
03505	EXTENSION AGENT	00			EX	
03506	HORTICULTURAL SUPERVISOR	29	1,643.04 - 2,616.64	42,719.04 - 68,032.64	EX	
03507	CURATOR/DIRECTOR MOUNTS BOTANICAL GARDENS	39	2,208.16 - 3,516.16	57,412.16 - 91,420.16	EX	
03510	GARDENER	17	14.398 - 22.939	29,947.84 - 47,713.12	NE	CWA
03512	HORTICULTURIST	25	1,459.52 - 2,324.80	37,947.52 - 60,444.80	EX	
03515	AGRICULTURAL ECONOMIC DEVELOPMENT COORDINATOR	45	2,636.56 - 4,198.88	68,550.56 - 109,170.88	EX	
03520	DIRECTOR COUNTY EXTENSION SERVICE	E06	3,847.28 - 6,754.16	100,029.28 - 175,608.16	EX	
	<u>CONSUMER AFFAIRS</u>					
03600	CONSUMER AFFAIRS INVESTIGATOR	26	18.796 - 29.933	39,095.68 - 62,260.64	NE	
03605	MANAGER CONSUMER AFFAIRS	32	1,795.44 - 2,859.36	46,681.44 - 74,343.36	EX	
03607	CONSUMER AFFAIRS COMPLIANCE OFFICER	24	17.716 - 28.215	36,849.28 - 58,687.20	NE	
03610	DIRECTOR CONSUMER AFFAIRS	E03	3,140.56 - 5,513.84	81,654.56 - 143,359.84	EX	
	<u>CRIMINAL JUSTICE</u>					



PALM BEACH COUNTY PAY PLAN

SPEC #	JOB CLASSIFICATION TABLE	PAY GR	HOURLY OR B/W PAY RANGE	ANNUAL PAY RANGE	O/T	B/U
03965	VICTIM ADVOCATE	25	18.244 - 29.060	37,947.52 - 60,444.80	NE	
03967	VICTIM SERVICES LICENSED THERAPIST	32	1,795.44 - 2,859.36	46,681.44 - 74,343.36	EX	
03968	VICTIM SERVICES TEAM SUPERVISOR	30	1,692.32 - 2,695.04	44,000.32 - 70,071.04	EX	
03969	LICENSED THERAPY COORDINATOR	34	1,904.48 - 3,033.36	49,516.48 - 78,867.36	EX	
03972	VICTIM SERVICES SENIOR PROGRAM COORDINATOR	36	2,020.32 - 3,217.84	52,528.32 - 83,663.84	EX	
03975	CRIMINAL JUSTICE ANALYST	29	1,643.04 - 2,616.64	42,719.04 - 68,032.64	EX	
03976	YOUTH VIOLENCE PREVENTION PLANNING COORDINATOR	36	2,020.32 - 3,217.84	52,528.32 - 83,663.84	EX	
03977	CRIME PREVENTION PROJECT SPECIALIST	34	1,904.48 - 3,033.36	49,516.48 - 78,867.36	EX	
03980	SENIOR CRIMINAL JUSTICE ANALYST	35	1,961.60 - 3,124.16	51,001.60 - 81,228.16	EX	
03981	MANAGER CRIMINAL JUSTICE PROGRAMS	39	2,208.16 - 3,516.16	57,412.16 - 91,420.16	EX	
03982	CRIMINAL JUSTICE PROGRAM DEVELOPMENT SPECIALIST	34	1,904.48 - 3,033.36	49,516.48 - 78,867.36	EX	
03984	DIRECTOR VICTIM SERVICES & SUPPORT	E03	3,140.56 - 5,513.84	81,654.56 - 143,359.84	EX	
03985	EXECUTIVE DIRECTOR CRIMINAL JUSTICE COMMISSION	E05	3,595.44 - 6,312.72	93,481.44 - 164,130.72	EX	
03987	SUBSTANCE ABUSE PREVENTION/GRANTS COORDINATOR	32	1,795.44 - 2,859.36	46,681.44 - 74,343.36	EX	
03990	COMMUNITY COURT COORDINATOR	47	2,797.12 - 4,454.40	72,725.12 - 115,814.40	EX	
03993	COMMUNITY SERVICES SUPERVISOR	25	1,459.52 - 2,324.80	37,947.52 - 60,444.80	EX	
03994	CLINICAL SERVICES PROGRAM SPECIALIST	29	1,643.04 - 2,616.64	42,719.04 - 68,032.64	EX	
03995	COURT CASE ADVISOR	25	18.244 - 29.060	37,947.52 - 60,444.80	NE	
03996	RESEARCH & PLANNING MANAGER	41	2,342.40 - 3,730.24	60,902.40 - 96,986.24	EX	
	<u>SKILLED TRADES, MECHANICAL REPAIR, GRAPHICS</u>					
	<u>Skilled Trades</u>					
04101	AIRPORTS STRIPING TECHNICIAN	17	14.398 - 22.939	29,947.84 - 47,713.12	NE	CWA



PALM BEACH COUNTY PAY PLAN

SPEC #	JOB CLASSIFICATION TABLE	PAY GR	HOURLY OR B/W PAY RANGE	ANNUAL PAY RANGE	O/T	B/U
04103	GENERAL MAINTENANCE MECHANIC	16	13.979 - 22.263	29,076.32 - 46,307.04	NE	CWA
04104	PAINTER	17	14.398 - 22.939	29,947.84 - 47,713.12	NE	CWA
04105	SECURITY DOOR TECHNICIAN	23	17.200 - 27.391	35,776.00 - 56,973.28	NE	CWA
04106	IRRIGATION TECHNICIAN	19	15.275 - 24.337	31,772.00 - 50,620.96	NE	CWA
04110	CARPENTER	23	17.200 - 27.391	35,776.00 - 56,973.28	NE	CWA
04113	PLUMBER	28	19.938 - 31.753	41,471.04 - 66,046.24	NE	CWA
04116	ELECTRICIAN	27	19.359 - 30.826	40,266.72 - 64,118.08	NE	CWA
04118	INDUSTRIAL ELECTRICIAN	29	20.538 - 32.708	42,719.04 - 68,032.64	NE	CWA
04119	MASON	25	18.244 - 29.060	37,947.52 - 60,444.80	NE	CWA
04123	WELDER I	24	17.716 - 28.215	36,849.28 - 58,687.20	NE	CWA
04124	WELDER II	26	18.796 - 29.933	39,095.68 - 62,260.64	NE	CWA
04130	COMMERCIAL EQUIPMENT TECHNICIAN	26	18.796 - 29.933	39,095.68 - 62,260.64	NE	CWA
04133	A/C & REFRIGERATION SPECIALIST I	26	18.796 - 29.933	39,095.68 - 62,260.64	NE	CWA
04134	A/C & REFRIGERATION SPECIALIST II	28	19.938 - 31.753	41,471.04 - 66,046.24	NE	CWA
04135	APPRENTICE I	17	14.398 - 22.939	29,947.84 - 47,713.12	NE	CWA
04136	APPRENTICE II	19	15.275 - 24.337	31,772.00 - 50,620.96	NE	CWA
04137	APPRENTICE III	21	16.213 - 25.818	33,723.04 - 53,701.44	NE	CWA
04138	APPRENTICE IV	23	17.200 - 27.391	35,776.00 - 56,973.28	NE	CWA
04140	BRIDGE MECHANIC I	23	17.200 - 27.391	35,776.00 - 56,973.28	NE	CWA
04141	BRIDGE MECHANIC II	25	18.244 - 29.060	37,947.52 - 60,444.80	NE	CWA
04145	TRADES CREW CHIEF	31	21.785 - 34.696	45,312.80 - 72,167.68	NE	CWA
04150	MAINTENANCE SUPERVISOR	35	1,961.60 - 3,124.16	51,001.60 - 81,228.16	EX	



PALM BEACH COUNTY PAY PLAN

SPEC #	JOB CLASSIFICATION TABLE	PAY GR	HOURLY OR B/W PAY RANGE	ANNUAL PAY RANGE	O/T	B/U
	<u>Mechanical Repair</u>					
04205	AUTOMOTIVE SUPPORT SPECIALIST I	21	16.213 - 25.818	33,723.04 - 53,701.44	NE	
04206	AUTOMOTIVE SUPPORT SPECIALIST II	26	18.796 - 29.933	39,095.68 - 62,260.64	NE	
04208	EQUIPMENT ANALYST	28	19.938 - 31.753	41,471.04 - 66,046.24	NE	CWA
04210	AUTOMOTIVE TECHNICIAN I	22	16.698 - 26.594	34,731.84 - 55,315.52	NE	CWA
04211	AUTOMOTIVE TECHNICIAN II	25	18.244 - 29.060	37,947.52 - 60,444.80	NE	CWA
04214	EQUIPMENT MECHANIC	22	16.698 - 26.594	34,731.84 - 55,315.52	NE	CWA
04221	SHOP SUPERVISOR	35	1,961.60 - 3,124.16	51,001.60 - 81,228.16	EX	
04223	PARTS SPECIALIST	18	14.829 - 23.628	30,844.32 - 49,146.24	NE	CWA
04224	FUEL SYSTEM COORDINATOR	29	1,643.04 - 2,616.64	42,719.04 - 68,032.64	EX	
04225	FLEET MANAGEMENT SUPPORT SERVICES SUPERVISOR	37	2,081.36 - 3,314.56	54,115.36 - 86,178.56	EX	
04227	DIRECTOR FLEET MANAGEMENT	E04	3,360.40 - 5,899.44	87,370.40 - 153,385.44	EX	
	<u>Graphic Arts</u>					
04412	GIS/CADD TECHNICIAN I	24	17.716 - 28.215	36,849.28 - 58,687.20	NE	
04414	GIS/CADD TECHNICIAN II	28	19.938 - 31.753	41,471.04 - 66,046.24	NE	
04416	GIS ANALYST	35	1,961.60 - 3,124.16	51,001.60 - 81,228.16	EX	
04418	GIS SUPPORT SPECIALIST	32	1,795.44 - 2,859.36	46,681.44 - 74,343.36	EX	
04420	PRINTER I	19	15.275 - 24.337	31,772.00 - 50,620.96	NE	CWA
04421	PRINTER II	24	17.716 - 28.215	36,849.28 - 58,687.20	NE	CWA
04422	GRAPHICS DESIGNER I	20	15.733 - 25.068	32,724.64 - 52,141.44	NE	CWA
04424	REPROGRAPHICS TECHNICIAN	14	13.178 - 20.993	27,410.24 - 43,665.44	NE	
04425	GRAPHICS DESIGNER II	22	16.698 - 26.594	34,731.84 - 55,315.52	NE	CWA



PALM BEACH COUNTY PAY PLAN

SPEC #	JOB CLASSIFICATION TABLE	PAY GR	HOURLY OR B/W PAY RANGE	ANNUAL PAY RANGE	O/T	B/U
04426	BINDERY WORKER	13	12.790 - 20.372	26,603.20 - 42,373.76	NE	CWA
04427	GRAPHICS PRODUCTION COORDINATOR	25	18.244 - 29.060	37,947.52 - 60,444.80	NE	CWA
04430	GRAPHICS MANAGER	35	1,961.60 - 3,124.16	51,001.60 - 81,228.16	EX	
04437	SIGN SHOP TECHNICIAN	18	14.829 - 23.628	30,844.32 - 49,146.24	NE	CWA
04438	SENIOR SIGN SHOP TECHNICIAN	21	16.213 - 25.818	33,723.04 - 53,701.44	NE	CWA
	<u>BUILDING SERVICE AND FOOD SERVICE</u>					
	<u>Facilities Management</u>					
05001	CUSTODIAL WORKER	09	11.370 - 18.107	23,649.60 - 37,662.56	NE	CWA
05017	FACILITIES CONTRACT EVALUATOR	30	1,692.32 - 2,695.04	44,000.32 - 70,071.04	EX	
05025	SECURITY OFFICER	14	13.178 - 20.993	27,410.24 - 43,665.44	NE	CWA
05030	SECURITY SUPERVISOR	25	18.244 - 29.060	37,947.52 - 60,444.80	NE	
05035	CHIEF SECURITY SUPERVISOR	35	1,961.60 - 3,124.16	51,001.60 - 81,228.16	EX	
05036	ACCESS MANAGER	42	2,412.80 - 3,842.16	62,732.80 - 99,896.16	EX	
05037	SECURITY MANAGER	42	2,412.80 - 3,842.16	62,732.80 - 99,896.16	EX	
05050	FACILITIES MANAGER	42	2,412.80 - 3,842.16	62,732.80 - 99,896.16	EX	
05052	MANAGER PROCUREMENT & PROJECT IMPLEMENTATION GROUP	43	2,485.28 - 3,957.76	64,617.28 - 102,901.76	EX	
05056	DIRECTOR FACILITIES MANAGEMENT	E04	3,360.40 - 5,899.44	87,370.40 - 153,385.44	EX	
05065	PARKING FACILITIES ATTENDANT I	09	11.370 - 18.107	23,649.60 - 37,662.56	NE	
05067	PARKING FACILITIES ATTENDANT II	13	12.790 - 20.372	26,603.20 - 42,373.76	NE	
05070	PARKING FACILITIES COORDINATOR	26	1,503.68 - 2,394.64	39,095.68 - 62,260.64	EX	
	<u>Food Services</u>					
05111	COOK II	09	11.370 - 18.107	23,649.60 - 37,662.56	NE	CWA



PALM BEACH COUNTY PAY PLAN

SPEC #	JOB CLASSIFICATION TABLE	PAY GR	HOURLY OR B/W PAY RANGE	ANNUAL PAY RANGE	O/T	B/U
05112	COOK III	11	12.059 - 19.212	25,082.72 - 39,960.96	NE	CWA
05120	FOOD SERVICE MANAGER	28	1,595.04 - 2,540.24	41,471.04 - 66,046.24	EX	
	<u>LEGAL, PUBLIC SAFETY AND RELATED</u>					
	<u>Legal</u>					
06015	LAW LIBRARY ASSOCIATE I	15	13.571 - 21.621	28,227.68 - 44,971.68	NE	
06016	LAW LIBRARY ASSOCIATE II	19	15.275 - 24.337	31,772.00 - 50,620.96	NE	
06018	MANAGER LAW LIBRARY	31	1,742.80 - 2,775.68	45,312.80 - 72,167.68	EX	
06019	EXECUTIVE SECRETARY TO THE COUNTY ATTORNEY	28	1,595.04 - 2,540.24	41,471.04 - 66,046.24	EX	
06020	LEGAL ASSISTANT III	31	21.785 - 34.696	45,312.80 - 72,167.68	NE	
06021	ADMINISTRATIVE LEGAL ASSISTANT	26	18.796 - 29.933	39,095.68 - 62,260.64	NE	
06022	LEGAL SECRETARY	24	17.716 - 28.215	36,849.28 - 58,687.20	NE	
06023	LEGAL ASSISTANT II	28	19.938 - 31.753	41,471.04 - 66,046.24	NE	
06024	LEGAL ASSISTANT I	26	18.796 - 29.933	39,095.68 - 62,260.64	NE	
06025	STAFF ATTORNEY	00			EX	
06026	ASSISTANT COUNTY ATTORNEY I	00			EX	
06027	ASSISTANT COUNTY ATTORNEY II	00			EX	
06028	ASSISTANT COUNTY ATTORNEY III	00			EX	
06029	SENIOR ASSISTANT COUNTY ATTORNEY	00			EX	
06032	CHIEF ASSISTANT COUNTY ATTORNEY	00			EX	
06034	COUNTY ATTORNEY	00	Contractual		EX	
06036	PARALEGAL III	31	21.785 - 34.696	45,312.80 - 72,167.68	NE	
	<u>Justice Services</u>					



PALM BEACH COUNTY PAY PLAN

SPEC #	JOB CLASSIFICATION TABLE	PAY GR	HOURLY OR B/W PAY RANGE	ANNUAL PAY RANGE	O/T	B/U
06037	GUARDIAN AD LITEM TRAINING COORDINATOR	26	1,503.68 - 2,394.64	39,095.68 - 62,260.64	EX	
06038	ELDER JUSTICE COUNSELOR	25	18.244 - 29.060	37,947.52 - 60,444.80	NE	
06039	COORDINATOR ELDER JUSTICE SERVICES	30	1,692.32 - 2,695.04	44,000.32 - 70,071.04	EX	
06044	JUVENILE DOMESTIC VIOLENCE MEDIATION PROGRAM COORD	28	1,595.04 - 2,540.24	41,471.04 - 66,046.24	EX	
06045	DIRECTOR JUSTICE SERVICES	E03	3,140.56 - 5,513.84	81,654.56 - 143,359.84	EX	
06047	PARALEGAL I	23	17.200 - 27.391	35,776.00 - 56,973.28	NE	
06052	DOMESTIC VIOLENCE INTAKE SPECIALIST	19	15.275 - 24.337	31,772.00 - 50,620.96	NE	
	<u>Court Administration</u>					
06056	MANAGER COURT SERVICES	39	2,208.16 - 3,516.16	57,412.16 - 91,420.16	EX	
06057	PRETRIAL SERVICES INTERVIEWER	16	13.979 - 22.263	29,076.32 - 46,307.04	NE	
06058	PRETRIAL SERVICES COUNSELOR I	23	17.200 - 27.391	35,776.00 - 56,973.28	NE	
06059	COURT PROGRAM SPECIALIST	23	17.200 - 27.391	35,776.00 - 56,973.28	NE	
06060	PRETRIAL SERVICES COUNSELOR II	28	1,595.04 - 2,540.24	41,471.04 - 66,046.24	EX	
06061	MENTAL HEALTH CASE MANAGER	29	1,643.04 - 2,616.64	42,719.04 - 68,032.64	EX	
06063	COURT ANALYST	31	1,742.80 - 2,775.68	45,312.80 - 72,167.68	EX	
06064	COUNTY COURT CASE MANAGER	23	17.200 - 27.391	35,776.00 - 56,973.28	NE	
	<u>Animal Care & Control</u>					
06200	ANIMAL CARE SPECIALIST	14	13.178 - 20.993	27,410.24 - 43,665.44	NE	CWA
06205	ANIMAL CARE VETERINARY ASSISTANT	20	15.733 - 25.068	32,724.64 - 52,141.44	NE	CWA
06207	ANIMAL CONTROL OFFICER I	24	17.716 - 28.215	36,849.28 - 58,687.20	NE	CWA
06210	ANIMAL CARE COORDINATOR	23	17.200 - 27.391	35,776.00 - 56,973.28	NE	CWA
06212	ANIMAL CONTROL OFFICER II	26	18.796 - 29.933	39,095.68 - 62,260.64	NE	CWA



PALM BEACH COUNTY PAY PLAN

SPEC #	JOB CLASSIFICATION TABLE	PAY GR	HOURLY OR B/W PAY RANGE	ANNUAL PAY RANGE	O/T	B/U
06213	ANIMAL SERVICES REPRESENTATIVE	14	13.178 - 20.993	27,410.24 - 43,665.44	NE	
06214	MANAGER CUSTOMER RELATIONS	26	1,503.68 - 2,394.64	39,095.68 - 62,260.64	EX	
06216	ANIMAL CARE & CONTROL FACILITY COORDINATOR	23	17.200 - 27.391	35,776.00 - 56,973.28	NE	CWA
06220	ANIMAL BITE COORDINATOR	17	14.398 - 22.939	29,947.84 - 47,713.12	NE	
06226	ANIMAL CARE & CONTROL FIELD SUPERVISOR	28	1,595.04 - 2,540.24	41,471.04 - 66,046.24	EX	
06231	MANAGER COMMUNITY PROJECTS	29	1,643.04 - 2,616.64	42,719.04 - 68,032.64	EX	
06235	CLINIC MANAGER	26	1,503.68 - 2,394.64	39,095.68 - 62,260.64	EX	
06236	SUPERVISOR SHELTER OPERATIONS	28	1,595.04 - 2,540.24	41,471.04 - 66,046.24	EX	
06237	VETERINARIAN	43	2,485.28 - 3,957.76	64,617.28 - 102,901.76	EX	
06241	DIRECTOR ANIMAL CARE & CONTROL	E03	3,140.56 - 5,513.84	81,654.56 - 143,359.84	EX	
06242	ASSISTANT DIRECTOR ANIMAL CARE & CONTROL	E01	2,743.12 - 4,848.24	71,321.12 - 126,054.24	EX	
06243	SPAY SHUTTLE DRIVER	22	16.698 - 26.594	34,731.84 - 55,315.52	NE	CWA
06244	CUSTOMER RELATIONS COORDINATOR	23	1,376.00 - 2,191.28	35,776.00 - 56,973.28	EX	
06245	ANIMAL CARE & CONTROL OPERATIONS MANAGER	36	2,020.32 - 3,217.84	52,528.32 - 83,663.84	EX	
06246	STRAY SHUTTLE DRIVER	15	13.571 - 21.621	28,227.68 - 44,971.68	NE	CWA
	<u>Emergency Management</u>					
06300	EMERGENCY MANAGEMENT PROGRAM COORDINATOR	24	1,417.28 - 2,257.20	36,849.28 - 58,687.20	EX	
06303	SENIOR MANAGER EMERGENCY MANAGEMENT PROGRAMS	43	2,485.28 - 3,957.76	64,617.28 - 102,901.76	EX	
06304	ASSISTANT MANAGER EMERGENCY MANAGEMENT OPERATIONS	38	2,143.68 - 3,413.68	55,735.68 - 88,755.68	EX	
06306	OUTREACH & PUBLIC INFORMATION COORDINATOR	30	1,692.32 - 2,695.04	44,000.32 - 70,071.04	EX	
06308	EMERGENCY MANAGEMENT SPECIALIST	32	1,795.44 - 2,859.36	46,681.44 - 74,343.36	EX	
06309	RADIOLOGICAL EMERGENCY PREPAREDNESS PLANNER	38	2,143.68 - 3,413.68	55,735.68 - 88,755.68	EX	



PALM BEACH COUNTY PAY PLAN

SPEC #	JOB CLASSIFICATION TABLE	PAY GR	HOURLY OR B/W PAY RANGE	ANNUAL PAY RANGE	O/T	B/U
06310	RECOVERY & MITIGATION PROGRAM MANAGER	40	2,274.48 - 3,621.84	59,136.48 - 94,167.84	EX	
06311	TERRORISM RESPONSE PLANNER	38	2,143.68 - 3,413.68	55,735.68 - 88,755.68	EX	
06314	MANAGER EMERGENCY MANAGEMENT OPERATIONS	40	2,274.48 - 3,621.84	59,136.48 - 94,167.84	EX	
06316	DIRECTOR EMERGENCY MANAGEMENT	E03	3,140.56 - 5,513.84	81,654.56 - 143,359.84	EX	
	<u>Emergency Medical Services</u>					
06400	EMERGENCY MEDICAL SERVICES SPECIALIST	26	18.796 - 29.933	39,095.68 - 62,260.64	NE	
06402	911 SPECIALIST	21	16.213 - 25.818	33,723.04 - 53,701.44	NE	
06405	MANAGER EMERGENCY MEDICAL SERVICES	36	2,020.32 - 3,217.84	52,528.32 - 83,663.84	EX	
06412	911 COORDINATOR	32	1,795.44 - 2,859.36	46,681.44 - 74,343.36	EX	
	<u>Public Safety</u>					
06550	DIRECTOR PUBLIC SAFETY	E07	4,116.40 - 7,227.12	107,026.40 - 187,905.12	EX	
06560	DROWNING PREVENTION COALITION COORDINATOR	32	1,795.44 - 2,859.36	46,681.44 - 74,343.36	EX	
06563	DROWNING PREVENTION COALITION MANAGER	37	2,081.36 - 3,314.56	54,115.36 - 86,178.56	EX	
	<u>AIRPORTS</u>					
07003	DIRECTOR AIRPORTS NOISE ABATEMENT/COMMUNITY AFFAIRS	E01	2,743.12 - 4,848.24	71,321.12 - 126,054.24	EX	
07005	DEPUTY DIRECTOR AIRPORTS PLANNING & COMMUNITY AFFAIRS	E05	3,595.44 - 6,312.72	93,481.44 - 164,130.72	EX	
07007	AIRPORTS SECURITY SUPERVISOR	30	1,692.32 - 2,695.04	44,000.32 - 70,071.04	EX	
07008	ACCESS TECHNICIAN	20	15.733 - 25.068	32,724.64 - 52,141.44	NE	
07011	AIRPORTS COMMUNICATIONS SPECIALIST	17	14.398 - 22.939	29,947.84 - 47,713.12	NE	
07012	AIRPORTS OPERATIONS SUPERVISOR	33	1,849.36 - 2,944.72	48,083.36 - 76,562.72	EX	
07013	AIRPORTS OPERATIONS OFFICER	28	19.938 - 31.753	41,471.04 - 66,046.24	NE	
07015	AIRPORTS PARKING CONTRACT COORDINATOR	30	1,692.32 - 2,695.04	44,000.32 - 70,071.04	EX	



PALM BEACH COUNTY PAY PLAN

SPEC #	JOB CLASSIFICATION TABLE	PAY GR	HOURLY OR B/W PAY RANGE	ANNUAL PAY RANGE	O/T	B/U
07016	AIRPORTS CUSTODIAL CONTRACT COORDINATOR	30	1,692.32 - 2,695.04	44,000.32 - 70,071.04	EX	
07017	AIRPORTS TECHNICAL SERVICES COORDINATOR	30	21.154 - 33.688	44,000.32 - 70,071.04	NE	
07018	DIRECTOR OF AIRPORTS OPERATIONS	E02	2,935.12 - 5,153.12	76,313.12 - 133,981.12	EX	
07019	DEPUTY DIRECTOR AIRPORTS OPERATIONS & MAINTENANCE	E05	3,595.44 - 6,312.72	93,481.44 - 164,130.72	EX	
07021	DISADVANTAGED BUSINESS ENTERPRISE PROGRAM TECHNICIAN	18	14.829 - 23.628	30,844.32 - 49,146.24	NE	
07025	ASSISTANT AIRPORTS PROPERTIES MANAGER	36	2,020.32 - 3,217.84	52,528.32 - 83,663.84	EX	
07026	AIRPORTS GENERAL AVIATION MANAGER	E01	2,743.12 - 4,848.24	71,321.12 - 126,054.24	EX	
07027	DEPUTY DIRECTOR AIRPORTS FINANCE & ADMIN	E05	3,595.44 - 6,312.72	93,481.44 - 164,130.72	EX	
07028	DIRECTOR AIRPORTS PLANNING	E02	2,935.12 - 5,153.12	76,313.12 - 133,981.12	EX	
07029	AIRPORTS S/DBE MANAGER	39	2,208.16 - 3,516.16	57,412.16 - 91,420.16	EX	
07030	DIRECTOR AIRPORTS	E08	4,404.48 - 7,733.28	114,516.48 - 201,065.28	EX	
07031	DEPUTY DIRECTOR AIRPORTS BUSINESS AFFAIRS	E05	3,595.44 - 6,312.72	93,481.44 - 164,130.72	EX	
07032	DIRECTOR AIRPORTS PROPERTIES	E01	2,743.12 - 4,848.24	71,321.12 - 126,054.24	EX	
07033	DIRECTOR AIRPORTS MAINTENANCE	E01	2,743.12 - 4,848.24	71,321.12 - 126,054.24	EX	
07034	MANAGER NOISE ABATEMENT/COMMUNITY AFFAIRS	42	2,412.80 - 3,842.16	62,732.80 - 99,896.16	EX	
	<u>FIRE RESCUE</u>					
	<u>Fire Rescue Administration</u>					
07503	PUBLIC EDUCATION MANAGER	40	2,274.48 - 3,621.84	59,136.48 - 94,167.84	EX	
07505	DIRECTOR FIRE RESCUE FLEET MAINTENANCE	E03	3,140.56 - 5,513.84	81,654.56 - 143,359.84	EX	
07515	EVIDENCE/RECORD SPECIALIST	21	16.213 - 25.818	33,723.04 - 53,701.44	NE	
07522	MANAGER FIRE RESCUE CAPITAL PROJECTS	42	2,412.80 - 3,842.16	62,732.80 - 99,896.16	EX	
07530	DIVISION CHIEF	E05	3,595.44 - 6,312.72	93,481.44 - 164,130.72	EX	



PALM BEACH COUNTY PAY PLAN

SPEC #	JOB CLASSIFICATION TABLE	PAY GR	HOURLY OR B/W PAY RANGE	ANNUAL PAY RANGE	O/T	B/U
07535	DEPUTY CHIEF	E06	3,847.28 - 6,754.16	100,029.28 - 175,608.16	EX	
07540	EXECUTIVE ASSISTANT TO FIRE RESCUE ADMINISTRATOR	E02	2,935.12 - 5,153.12	76,313.12 - 133,981.12	EX	
07544	FIRE RESCUE PAYROLL & LTD COORDINATOR	37	2,081.36 - 3,314.56	54,115.36 - 86,178.56	EX	
07545	DIRECTOR FINANCE & PLANNING	E02	2,935.12 - 5,153.12	76,313.12 - 133,981.12	EX	
07550	FIRE RESCUE ADMINISTRATOR	E09	4,713.12 - 8,274.40	122,541.12 - 215,134.40	EX	
	<u>HEALTH AND MEDICAL EXAMINER</u>					
	<u>Health</u>					
08010	LICENSED PRACTICAL NURSE	23	17.200 - 27.391	35,776.00 - 56,973.28	NE	
08014	REGISTERED NURSE	32	22.443 - 35.742	46,681.44 - 74,343.36	NE	
08023	MEDICAL SECRETARY	21	16.213 - 25.818	33,723.04 - 53,701.44	NE	
	<u>Medical Examiner</u>					
08104	FORENSIC INVESTIGATOR II	30	21.154 - 33.688	44,000.32 - 70,071.04	NE	
08105	FORENSIC TECHNICIAN	22	16.698 - 26.594	34,731.84 - 55,315.52	NE	
08107	FORENSIC INVESTIGATOR I	27	19.359 - 30.826	40,266.72 - 64,118.08	NE	
08108	MORGUE SUPERVISOR	28	1,595.04 - 2,540.24	41,471.04 - 66,046.24	EX	
08109	FORENSIC SUPERVISOR	34	1,904.48 - 3,033.36	49,516.48 - 78,867.36	EX	
08110	MANAGER MEDICAL EXAMINER OPERATIONS	44	2,559.92 - 4,076.80	66,557.92 - 105,996.80	EX	
08112	ASSOCIATE MEDICAL EXAMINER	00			EX	
08114	MEDICAL EXAMINER	00			EX	
	<u>PUBLIC WORKS AND WATER UTILITIES</u>					
	<u>General Labor and Equipment Operations</u>					



PALM BEACH COUNTY PAY PLAN

SPEC #	JOB CLASSIFICATION TABLE	PAY GR	HOURLY OR B/W PAY RANGE	ANNUAL PAY RANGE	O/T	B/U
09000	MAINTENANCE WORKER I	10	11.713 - 18.655	24,363.04 - 38,802.40	NE	CWA
09001	MAINTENANCE WORKER II	13	12.790 - 20.372	26,603.20 - 42,373.76	NE	CWA
09002	MAINTENANCE WORKER III	15	13.571 - 21.621	28,227.68 - 44,971.68	NE	CWA
09003	MAINTENANCE WORKER IV	19	15.275 - 24.337	31,772.00 - 50,620.96	NE	CWA
09004	PASSENGER DRIVER	09	11.370 - 18.107	23,649.60 - 37,662.56	NE	CWA
09006	MOTOR EQUIPMENT OPERATOR II	15	13.571 - 21.621	28,227.68 - 44,971.68	NE	CWA
09007	MOTOR EQUIPMENT OPERATOR III	19	15.275 - 24.337	31,772.00 - 50,620.96	NE	CWA
09008	MOTOR EQUIPMENT OPERATOR IV	22	16.698 - 26.594	34,731.84 - 55,315.52	NE	CWA
09015	BRIDGETENDER	09	11.370 - 18.107	23,649.60 - 37,662.56	NE	CWA
09017	ASSISTANT BRIDGETENDER SUPERVISOR	26	1,503.68 - 2,394.64	39,095.68 - 62,260.64	EX	
09018	BRIDGETENDER SUPERVISOR	29	1,643.04 - 2,616.64	42,719.04 - 68,032.64	EX	
09025	BRIDGE REPAIRER	19	15.275 - 24.337	31,772.00 - 50,620.96	NE	CWA
09035	DREDGE OPERATOR	22	16.698 - 26.594	34,731.84 - 55,315.52	NE	CWA
09101	PUBLIC WORKS CREW CHIEF	25	18.244 - 29.060	37,947.52 - 60,444.80	NE	CWA
09110	PUBLIC WORKS SUPERVISOR	32	1,795.44 - 2,859.36	46,681.44 - 74,343.36	EX	
	<u>Public Works Administration</u>					
09201	FIELD OFFICE COORDINATOR	18	14.829 - 23.628	30,844.32 - 49,146.24	NE	CWA
09205	ASSISTANT PUBLIC WORKS SUPERINTENDENT	38	2,143.68 - 3,413.68	55,735.68 - 88,755.68	EX	
09210	PUBLIC WORKS SUPERINTENDENT	41	2,342.40 - 3,730.24	60,902.40 - 96,986.24	EX	
09215	ASSISTANT DIRECTOR ROAD & BRIDGE	E01	2,743.12 - 4,848.24	71,321.12 - 126,054.24	EX	
09216	DIRECTOR ROAD & BRIDGE	E03	3,140.56 - 5,513.84	81,654.56 - 143,359.84	EX	
	<u>Water Utilities</u>					



PALM BEACH COUNTY PAY PLAN

SPEC #	JOB CLASSIFICATION TABLE	PAY GR	HOURLY OR B/W PAY RANGE	ANNUAL PAY RANGE	O/T	B/U
09300	SENIOR CUSTOMER SERVICE SPECIALIST	18	14.829 - 23.628	30,844.32 - 49,146.24	NE	
09301	CUSTOMER SERVICE SPECIALIST	15	13.571 - 21.621	28,227.68 - 44,971.68	NE	
09303	UTILITY ROUTING SPECIALIST	21	16.213 - 25.818	33,723.04 - 53,701.44	NE	CWA
09304	CUSTOMER SERVICE SUPERVISOR	29	1,643.04 - 2,616.64	42,719.04 - 68,032.64	EX	
09305	METER READER	14	13.178 - 20.993	27,410.24 - 43,665.44	NE	CWA
09307	CUSTOMER SERVICE REPRESENTATIVE	15	13.571 - 21.621	28,227.68 - 44,971.68	NE	
09310	MANAGER UTILITY CUSTOMER SERVICE	43	2,485.28 - 3,957.76	64,617.28 - 102,901.76	EX	
09315	UTILITY PLANT OPERATOR APPRENTICE	16	13.979 - 22.263	29,076.32 - 46,307.04	NE	CWA
09317	UTILITY PLANT OPERATOR I	25	18.244 - 29.060	37,947.52 - 60,444.80	NE	CWA
09318	UTILITY PLANT OPERATOR II	27	19.359 - 30.826	40,266.72 - 64,118.08	NE	CWA
09321	WATER PLANT SUPERINTENDENT	39	2,208.16 - 3,516.16	57,412.16 - 91,420.16	EX	
09322	WASTEWATER PLANT SUPERINTENDENT	39	2,208.16 - 3,516.16	57,412.16 - 91,420.16	EX	
09323	CHIEF WATER/WASTEWATER PLANT OPERATOR	36	25.254 - 40.223	52,528.32 - 83,663.84	NE	
09325	UTILITY PLANT MECHANIC	23	17.200 - 27.391	35,776.00 - 56,973.28	NE	CWA
09326	UTILITY PLANT MAINTENANCE SUPERVISOR	33	1,849.36 - 2,944.72	48,083.36 - 76,562.72	EX	
09329	LIFT STATION TECHNICIAN I	15	13.571 - 21.621	28,227.68 - 44,971.68	NE	CWA
09330	LIFT STATION TECHNICIAN II	17	14.398 - 22.939	29,947.84 - 47,713.12	NE	CWA
09332	LABORATORY QUALITY ASSURANCE OFFICER	33	1,849.36 - 2,944.72	48,083.36 - 76,562.72	EX	
09333	SHOP & PLANT MAINTENANCE SUPERVISOR	35	1,961.60 - 3,124.16	51,001.60 - 81,228.16	EX	
09334	LABORATORY TECHNICIAN	24	17.716 - 28.215	36,849.28 - 58,687.20	NE	
09335	LABORATORY MANAGER	40	2,274.48 - 3,621.84	59,136.48 - 94,167.84	EX	
09336	LABORATORY ASSISTANT	14	13.178 - 20.993	27,410.24 - 43,665.44	NE	



PALM BEACH COUNTY PAY PLAN

SPEC #	JOB CLASSIFICATION TABLE	PAY GR	HOURLY OR B/W PAY RANGE	ANNUAL PAY RANGE	O/T	B/U
09337	UTILITY LINE MAINTENANCE SUPERVISOR	32	1,795.44 - 2,859.36	46,681.44 - 74,343.36	EX	
09340	DIRECTOR PLANT OPERATIONS & MAINTENANCE	E04	3,360.40 - 5,899.44	87,370.40 - 153,385.44	EX	
09341	CHEMIST	31	1,742.80 - 2,775.68	45,312.80 - 72,167.68	EX	
09342	CONTRACT MANAGEMENT CLERK	17	14.398 - 22.939	29,947.84 - 47,713.12	NE	
09343	DIRECTOR FINANCE & ADMINISTRATION	E04	3,360.40 - 5,899.44	87,370.40 - 153,385.44	EX	
09344	ASSISTANT DIRECTOR FINANCE & ADMINISTRATION	E02	2,935.12 - 5,153.12	76,313.12 - 133,981.12	EX	
09347	DIRECTOR UTILITIES ENGINEERING	E04	3,360.40 - 5,899.44	87,370.40 - 153,385.44	EX	
09349	OPERATIONS & MAINTENANCE SUPERINTENDENT	38	2,143.68 - 3,413.68	55,735.68 - 88,755.68	EX	
09350	DIRECTOR WATER UTILITIES	E08	4,404.48 - 7,733.28	114,516.48 - 201,065.28	EX	
09351	UTILITY CONSTRUCTION INSPECTOR	29	20.538 - 32.708	42,719.04 - 68,032.64	NE	
09353	DIRECTOR LINE OPERATIONS & MAINTENANCE	E04	3,360.40 - 5,899.44	87,370.40 - 153,385.44	EX	
09354	MANAGER UTILITIES TECHNICAL SERVICES	43	2,485.28 - 3,957.76	64,617.28 - 102,901.76	EX	
09356	WATER UTILITIES LANDSCAPING COORDINATOR	38	2,143.68 - 3,413.68	55,735.68 - 88,755.68	EX	
09357	ASSISTANT DIRECTOR WATER UTILITIES	E06	3,847.28 - 6,754.16	100,029.28 - 175,608.16	EX	
09358	UTILITIES OPERATIONS & MAINTENANCE MANAGER	46	2,715.60 - 4,325.20	70,605.60 - 112,455.20	EX	
09359	AIR QUALITY TECHNICIAN	23	17.200 - 27.391	35,776.00 - 56,973.28	NE	CWA
09360	UTILITY LINE CREW CHIEF	26	18.796 - 29.933	39,095.68 - 62,260.64	NE	CWA
09361	UTILITY LINE TECHNICIAN I	17	14.398 - 22.939	29,947.84 - 47,713.12	NE	CWA
09362	UTILITY LINE TECHNICIAN II	20	15.733 - 25.068	32,724.64 - 52,141.44	NE	CWA
09363	UTILITY LINE TECHNICIAN III	23	17.200 - 27.391	35,776.00 - 56,973.28	NE	CWA
09365	WATER RECLAMATION PLANTS O & M MANAGER	46	2,715.60 - 4,325.20	70,605.60 - 112,455.20	EX	
09366	CROSS CONNECTION CONTROL COORDINATOR	26	18.796 - 29.933	39,095.68 - 62,260.64	NE	



PALM BEACH COUNTY PAY PLAN

SPEC #	JOB CLASSIFICATION TABLE	PAY GR	HOURLY OR B/W PAY RANGE	ANNUAL PAY RANGE	O/T	B/U
09367	INFILTRATION & INFLOW TECHNICIAN I	20	15.733 - 25.068	32,724.64 - 52,141.44	NE	CWA
09368	INFILTRATION & INFLOW TECHNICIAN II	23	17.200 - 27.391	35,776.00 - 56,973.28	NE	CWA
09372	UTILITY REGULATORY COMPLIANCE SPECIALIST	33	1,849.36 - 2,944.72	48,083.36 - 76,562.72	EX	
09373	MANAGER WATER UTILITIES DEPARTMENT SUPPORT SERVICES	39	2,208.16 - 3,516.16	57,412.16 - 91,420.16	EX	
09374	REGULATORY COMPLIANCE/FIELD SUPERVISOR	40	2,274.48 - 3,621.84	59,136.48 - 94,167.84	EX	
09375	METER SERVICE TECHNICIAN	18	14.829 - 23.628	30,844.32 - 49,146.24	NE	CWA
09376	SENIOR METER SERVICE TECHNICIAN	21	16.213 - 25.818	33,723.04 - 53,701.44	NE	CWA
09377	UTILITY CONSTRUCTION TECHNICIAN I	20	15.733 - 25.068	32,724.64 - 52,141.44	NE	CWA
09378	UTILITY CONSTRUCTION TECHNICIAN II	23	17.200 - 27.391	35,776.00 - 56,973.28	NE	CWA
09379	UTILITY CONSTRUCTION TECHNICIAN III	26	18.796 - 29.933	39,095.68 - 62,260.64	NE	CWA
09380	UTILITY CONSTRUCTION CREW CHIEF	29	20.538 - 32.708	42,719.04 - 68,032.64	NE	CWA
09381	DIRECTOR REGULATORY COMPLIANCE	E04	3,360.40 - 5,899.44	87,370.40 - 153,385.44	EX	
09382	DEPUTY DIRECTOR WATER UTILITIES	E06	3,847.28 - 6,754.16	100,029.28 - 175,608.16	EX	
09383	UTILITY CUSTOMER RELATIONS COORDINATOR	23	1,376.00 - 2,191.28	35,776.00 - 56,973.28	EX	
09384	LABORATORY INFORMATION MANAGEMENT SYSTEM(LIMS) ADMINISTRATOR	32	1,795.44 - 2,859.36	46,681.44 - 74,343.36	EX	
09385	WUD ADMINISTRATIVE SERVICES COORDINATOR	39	2,208.16 - 3,516.16	57,412.16 - 91,420.16	EX	
09386	UTILITY FLEET MANAGEMENT AND TRAINING SUPERINTENDENT	38	2,143.68 - 3,413.68	55,735.68 - 88,755.68	EX	
09387	HYDRAULIC & HYDROLOGIC MODELING ANALYST	39	2,208.16 - 3,516.16	57,412.16 - 91,420.16	EX	
09388	UTILITY MAINTENANCE PLANNER/SCHEDULER	30	1,692.32 - 2,695.04	44,000.32 - 70,071.04	EX	
09389	MANAGER OF WATER UTILITIES LEGISLATIVE AFFAIRS	46	2,715.60 - 4,325.20	70,605.60 - 112,455.20	EX	
09390	UTILITY FIELD CUSTOMER SERVICE SUPERINTENDENT	38	2,143.68 - 3,413.68	55,735.68 - 88,755.68	EX	
09391	UTILITY REHABILITATION PROJECT COORDINATOR	38	2,143.68 - 3,413.68	55,735.68 - 88,755.68	EX	



PALM BEACH COUNTY PAY PLAN

SPEC #	JOB CLASSIFICATION TABLE	PAY GR	HOURLY OR B/W PAY RANGE	ANNUAL PAY RANGE	O/T	B/U
09392	SENIOR CUSTOMER SERVICE REPRESENTATIVE	18	14.829 - 23.628	30,844.32 - 49,146.24	NE	
09393	CUSTOMER SERVICE SPECIALIST II	17	14.398 - 22.939	29,947.84 - 47,713.12	NE	
09394	UTILITY CONSTRUCTION CREW SUPERINTENDENT	38	2,143.68 - 3,413.68	55,735.68 - 88,755.68	EX	
09396	LABORATORY FIELD SAMPLING TECHNICIAN	17	14.398 - 22.939	29,947.84 - 47,713.12	NE	
09397	INFILTRATION & INFLOW TECHNICIAN APPRENTICE	17	14.398 - 22.939	29,947.84 - 47,713.12	NE	CWA
09398	SENIOR CHEMIST	33	1,849.36 - 2,944.72	48,083.36 - 76,562.72	EX	
09500	GLADES UTILITY AUTHORITY GENERAL MANAGER	E03	3,140.56 - 5,513.84	81,654.56 - 143,359.84	EX	



SALARY RANGES



PAY RANGE REPORT

PAY GRADE		MINIMUM	MAXIMUM	10 YEAR MAXIMUM	20 YEAR MAXIMUM
<u>GENERAL</u>					
01	HOURLY	8.974	14.291	15.006	15.756
	BI/WEEKLY	717.92	1,143.28	1,200.48	1,260.48
	ANNUALLY	18,665.92	29,725.28	31,212.48	32,772.48
02	HOURLY	9.251	14.726	15.462	16.235
	BI/WEEKLY	740.08	1,178.08	1,236.96	1,298.80
	ANNUALLY	19,242.08	30,630.08	32,160.96	33,768.80
03	HOURLY	9.521	15.165	15.923	16.719
	BI/WEEKLY	761.68	1,213.20	1,273.84	1,337.52
	ANNUALLY	19,803.68	31,543.20	33,119.84	34,775.52
04	HOURLY	9.806	15.621	16.402	17.222
	BI/WEEKLY	784.48	1,249.68	1,312.16	1,377.76
	ANNUALLY	20,396.48	32,491.68	34,116.16	35,821.76
05	HOURLY	10.107	16.088	16.892	17.737
	BI/WEEKLY	808.56	1,287.04	1,351.36	1,418.96
	ANNUALLY	21,022.56	33,463.04	35,135.36	36,892.96
06	HOURLY	10.399	16.571	17.400	18.270
	BI/WEEKLY	831.92	1,325.68	1,392.00	1,461.60
	ANNUALLY	21,629.92	34,467.68	36,192.00	38,001.60



PAY RANGE REPORT

PAY GRADE		MINIMUM	MAXIMUM	10 YEAR MAXIMUM	20 YEAR MAXIMUM
07	HOURLY	10.722	17.070	17.924	18.820
	BI/WEEKLY	857.76	1,365.60	1,433.92	1,505.60
	ANNUALLY	22,301.76	35,505.60	37,281.92	39,145.60
08	HOURLY	11.039	17.579	18.458	19.381
	BI/WEEKLY	883.12	1,406.32	1,476.64	1,550.48
	ANNUALLY	22,961.12	36,564.32	38,392.64	40,312.48
09	HOURLY	11.370	18.107	19.012	19.963
	BI/WEEKLY	909.60	1,448.56	1,520.96	1,597.04
	ANNUALLY	23,649.60	37,662.56	39,544.96	41,523.04
10	HOURLY	11.713	18.655	19.588	20.567
	BI/WEEKLY	937.04	1,492.40	1,567.04	1,645.36
	ANNUALLY	24,363.04	38,802.40	40,743.04	42,779.36
11	HOURLY	12.059	19.212	20.173	21.182
	BI/WEEKLY	964.72	1,536.96	1,613.84	1,694.56
	ANNUALLY	25,082.72	39,960.96	41,959.84	44,058.56
12	HOURLY	12.422	19.787	20.776	21.815
	BI/WEEKLY	993.76	1,582.96	1,662.08	1,745.20
	ANNUALLY	25,837.76	41,156.96	43,214.08	45,375.20



PAY RANGE REPORT

PAY GRADE		MINIMUM	MAXIMUM	10 YEAR MAXIMUM	20 YEAR MAXIMUM
13	HOURLY	12.790	20.372	21.391	22.461
	BI/WEEKLY	1,023.20	1,629.76	1,711.28	1,796.88
	ANNUALLY	26,603.20	42,373.76	44,493.28	46,718.88
14	HOURLY	13.178	20.993	22.043	23.145
	BI/WEEKLY	1,054.24	1,679.44	1,763.44	1,851.60
	ANNUALLY	27,410.24	43,665.44	45,849.44	48,141.60
15	HOURLY	13.571	21.621	22.702	23.837
	BI/WEEKLY	1,085.68	1,729.68	1,816.16	1,906.96
	ANNUALLY	28,227.68	44,971.68	47,220.16	49,580.96
16	HOURLY	13.979	22.263	23.376	24.545
	BI/WEEKLY	1,118.32	1,781.04	1,870.08	1,963.60
	ANNUALLY	29,076.32	46,307.04	48,622.08	51,053.60
17	HOURLY	14.398	22.939	24.086	25.290
	BI/WEEKLY	1,151.84	1,835.12	1,926.88	2,023.20
	ANNUALLY	29,947.84	47,713.12	50,098.88	52,603.20
18	HOURLY	14.829	23.628	24.809	26.049
	BI/WEEKLY	1,186.32	1,890.24	1,984.72	2,083.92
	ANNUALLY	30,844.32	49,146.24	51,602.72	54,181.92



PAY RANGE REPORT

PAY GRADE		MINIMUM	MAXIMUM	10 YEAR MAXIMUM	20 YEAR MAXIMUM
19	HOURLY	15.275	24.337	25.554	26.832
	BI/WEEKLY	1,222.00	1,946.96	2,044.32	2,146.56
	ANNUALLY	31,772.00	50,620.96	53,152.32	55,810.56
20	HOURLY	15.733	25.068	26.321	27.637
	BI/WEEKLY	1,258.64	2,005.44	2,105.68	2,210.96
	ANNUALLY	32,724.64	52,141.44	54,747.68	57,484.96
21	HOURLY	16.213	25.818	27.109	28.464
	BI/WEEKLY	1,297.04	2,065.44	2,168.72	2,277.12
	ANNUALLY	33,723.04	53,701.44	56,386.72	59,205.12
22	HOURLY	16.698	26.594	27.924	29.320
	BI/WEEKLY	1,335.84	2,127.52	2,233.92	2,345.60
	ANNUALLY	34,731.84	55,315.52	58,081.92	60,985.60
23	HOURLY	17.200	27.391	28.761	30.199
	BI/WEEKLY	1,376.00	2,191.28	2,300.88	2,415.92
	ANNUALLY	35,776.00	56,973.28	59,822.88	62,813.92
24	HOURLY	17.716	28.215	29.626	31.107
	BI/WEEKLY	1,417.28	2,257.20	2,370.08	2,488.56
	ANNUALLY	36,849.28	58,687.20	61,622.08	64,702.56



PAY RANGE REPORT

PAY GRADE		MINIMUM	MAXIMUM	10 YEAR MAXIMUM	20 YEAR MAXIMUM
25	HOURLY	18.244	29.060	30.513	32.039
	BI/WEEKLY	1,459.52	2,324.80	2,441.04	2,563.12
	ANNUALLY	37,947.52	60,444.80	63,467.04	66,641.12
26	HOURLY	18.796	29.933	31.430	33.002
	BI/WEEKLY	1,503.68	2,394.64	2,514.40	2,640.16
	ANNUALLY	39,095.68	62,260.64	65,374.40	68,644.16
27	HOURLY	19.359	30.826	32.367	33.985
	BI/WEEKLY	1,548.72	2,466.08	2,589.36	2,718.80
	ANNUALLY	40,266.72	64,118.08	67,323.36	70,688.80
28	HOURLY	19.938	31.753	33.341	35.008
	BI/WEEKLY	1,595.04	2,540.24	2,667.28	2,800.64
	ANNUALLY	41,471.04	66,046.24	69,349.28	72,816.64
29	HOURLY	20.538	32.708	34.343	36.060
	BI/WEEKLY	1,643.04	2,616.64	2,747.44	2,884.80
	ANNUALLY	42,719.04	68,032.64	71,433.44	75,004.80
30	HOURLY	21.154	33.688	35.372	37.141
	BI/WEEKLY	1,692.32	2,695.04	2,829.76	2,971.28
	ANNUALLY	44,000.32	70,071.04	73,573.76	77,253.28



PAY RANGE REPORT

PAY GRADE		MINIMUM	MAXIMUM	10 YEAR MAXIMUM	20 YEAR MAXIMUM
31	HOURLY	21.785	34.696	36.431	38.253
	BI/WEEKLY	1,742.80	2,775.68	2,914.48	3,060.24
	ANNUALLY	45,312.80	72,167.68	75,776.48	79,566.24
32	HOURLY	22.443	35.742	37.529	39.405
	BI/WEEKLY	1,795.44	2,859.36	3,002.32	3,152.40
	ANNUALLY	46,681.44	74,343.36	78,060.32	81,962.40
33	HOURLY	23.117	36.809	38.649	40.581
	BI/WEEKLY	1,849.36	2,944.72	3,091.92	3,246.48
	ANNUALLY	48,083.36	76,562.72	80,389.92	84,408.48
34	HOURLY	23.806	37.917	39.813	41.804
	BI/WEEKLY	1,904.48	3,033.36	3,185.04	3,344.32
	ANNUALLY	49,516.48	78,867.36	82,811.04	86,952.32
35	HOURLY	24.520	39.052	41.005	43.055
	BI/WEEKLY	1,961.60	3,124.16	3,280.40	3,444.40
	ANNUALLY	51,001.60	81,228.16	85,290.40	89,554.40
36	HOURLY	25.254	40.223	42.234	44.346
	BI/WEEKLY	2,020.32	3,217.84	3,378.72	3,547.68
	ANNUALLY	52,528.32	83,663.84	87,846.72	92,239.68



PAY RANGE REPORT

PAY GRADE		MINIMUM	MAXIMUM	10 YEAR MAXIMUM	20 YEAR MAXIMUM
37	HOURLY	26.017	41.432	43.504	45.679
	BI/WEEKLY	2,081.36	3,314.56	3,480.32	3,654.32
	ANNUALLY	54,115.36	86,178.56	90,488.32	95,012.32
38	HOURLY	26.796	42.671	44.805	47.045
	BI/WEEKLY	2,143.68	3,413.68	3,584.40	3,763.60
	ANNUALLY	55,735.68	88,755.68	93,194.40	97,853.60
39	HOURLY	27.602	43.952	46.150	48.458
	BI/WEEKLY	2,208.16	3,516.16	3,692.00	3,876.64
	ANNUALLY	57,412.16	91,420.16	95,992.00	100,792.64
40	HOURLY	28.431	45.273	47.537	49.914
	BI/WEEKLY	2,274.48	3,621.84	3,802.96	3,993.12
	ANNUALLY	59,136.48	94,167.84	98,876.96	103,821.12
41	HOURLY	29.280	46.628	48.959	51.407
	BI/WEEKLY	2,342.40	3,730.24	3,916.72	4,112.56
	ANNUALLY	60,902.40	96,986.24	101,834.72	106,926.56
42	HOURLY	30.160	48.027	50.428	52.949
	BI/WEEKLY	2,412.80	3,842.16	4,034.24	4,235.92
	ANNUALLY	62,732.80	99,896.16	104,890.24	110,133.92



PAY RANGE REPORT

PAY GRADE		MINIMUM	MAXIMUM	10 YEAR MAXIMUM	20 YEAR MAXIMUM
43	HOURLY	31.066	49.472	51.946	54.543
	BI/WEEKLY	2,485.28	3,957.76	4,155.68	4,363.44
	ANNUALLY	64,617.28	102,901.76	108,047.68	113,449.44
44	HOURLY	31.999	50.960	53.508	56.183
	BI/WEEKLY	2,559.92	4,076.80	4,280.64	4,494.64
	ANNUALLY	66,557.92	105,996.80	111,296.64	116,860.64
45	HOURLY	32.957	52.486	55.110	57.866
	BI/WEEKLY	2,636.56	4,198.88	4,408.80	4,629.28
	ANNUALLY	68,550.56	109,170.88	114,628.80	120,361.28
46	HOURLY	33.945	54.065	56.768	59.606
	BI/WEEKLY	2,715.60	4,325.20	4,541.44	4,768.48
	ANNUALLY	70,605.60	112,455.20	118,077.44	123,980.48
47	HOURLY	34.964	55.680	58.464	61.387
	BI/WEEKLY	2,797.12	4,454.40	4,677.12	4,910.96
	ANNUALLY	72,725.12	115,814.40	121,605.12	127,684.96
48	HOURLY	36.014	57.350	60.218	63.229
	BI/WEEKLY	2,881.12	4,588.00	4,817.44	5,058.32
	ANNUALLY	74,909.12	119,288.00	125,253.44	131,516.32



PAY RANGE REPORT

PAY GRADE		MINIMUM	MAXIMUM	10 YEAR MAXIMUM	20 YEAR MAXIMUM
49	HOURLY	37.092	59.073	62.027	65.128
	BI/WEEKLY	2,967.36	4,725.84	4,962.16	5,210.24
	ANNUALLY	77,151.36	122,871.84	129,016.16	135,466.24
50	HOURLY	38.207	60.843	63.885	67.079
	BI/WEEKLY	3,056.56	4,867.44	5,110.80	5,366.32
	ANNUALLY	79,470.56	126,553.44	132,880.80	139,524.32
51	HOURLY	39.347	62.669	65.802	69.092
	BI/WEEKLY	3,147.76	5,013.52	5,264.16	5,527.36
	ANNUALLY	81,841.76	130,351.52	136,868.16	143,711.36
52	HOURLY	40.531	64.549	67.776	71.165
	BI/WEEKLY	3,242.48	5,163.92	5,422.08	5,693.20
	ANNUALLY	84,304.48	134,261.92	140,974.08	148,023.20
53	HOURLY	41.782	66.485	69.809	73.299
	BI/WEEKLY	3,342.56	5,318.80	5,584.72	5,863.92
	ANNUALLY	86,906.56	138,288.80	145,202.72	152,461.92
54	HOURLY	43.001	68.487	71.911	75.507
	BI/WEEKLY	3,440.08	5,478.96	5,752.88	6,040.56
	ANNUALLY	89,442.08	142,452.96	149,574.88	157,054.56



PAY RANGE REPORT

PAY GRADE		MINIMUM	MAXIMUM	10 YEAR MAXIMUM	20 YEAR MAXIMUM
55	HOURLY	44.292	70.537	74.064	77.767
	BI/WEEKLY	3,543.36	5,642.96	5,925.12	6,221.36
	ANNUALLY	92,127.36	146,716.96	154,053.12	161,755.36
56	HOURLY	45.629	72.659	76.292	80.107
	BI/WEEKLY	3,650.32	5,812.72	6,103.36	6,408.56
	ANNUALLY	94,908.32	151,130.72	158,687.36	166,622.56
57	HOURLY	46.990	74.839	78.581	82.510
	BI/WEEKLY	3,759.20	5,987.12	6,286.48	6,600.80
	ANNUALLY	97,739.20	155,665.12	163,448.48	171,620.80
58	HOURLY	48.400	77.078	80.932	84.979
	BI/WEEKLY	3,872.00	6,166.24	6,474.56	6,798.32
	ANNUALLY	100,672.00	160,322.24	168,338.56	176,756.32
59	HOURLY	49.845	79.389	83.358	87.526
	BI/WEEKLY	3,987.60	6,351.12	6,668.64	7,002.08
	ANNUALLY	103,677.60	165,129.12	173,384.64	182,054.08
60	HOURLY	51.347	81.774	85.863	90.156
	BI/WEEKLY	4,107.76	6,541.92	6,869.04	7,212.48
	ANNUALLY	106,801.76	170,089.92	178,595.04	187,524.48



PAY RANGE REPORT

PAY GRADE		MINIMUM	MAXIMUM
EXECUTIVE			
E01	HOURLY	34.289	60.603
	BI/WEEKLY	2,743.12	4,848.24
	ANNUALLY	71,321.12	126,054.24
E02	HOURLY	36.689	64.414
	BI/WEEKLY	2,935.12	5,153.12
	ANNUALLY	76,313.12	133,981.12
E03	HOURLY	39.257	68.923
	BI/WEEKLY	3,140.56	5,513.84
	ANNUALLY	81,654.56	143,359.84
E04	HOURLY	42.005	73.743
	BI/WEEKLY	3,360.40	5,899.44
	ANNUALLY	87,370.40	153,385.44
E05	HOURLY	44.943	78.909
	BI/WEEKLY	3,595.44	6,312.72
	ANNUALLY	93,481.44	164,130.72
E06	HOURLY	48.091	84.427
	BI/WEEKLY	3,847.28	6,754.16
	ANNUALLY	100,029.28	175,608.16



PAY RANGE REPORT

PAY GRADE		MINIMUM	MAXIMUM
E07	HOURLY	51.455	90.339
	BI/WEEKLY	4,116.40	7,227.12
	ANNUALLY	107,026.40	187,905.12
E08	HOURLY	55.056	96.666
	BI/WEEKLY	4,404.48	7,733.28
	ANNUALLY	114,516.48	201,065.28
E09	HOURLY	58.914	103.430
	BI/WEEKLY	4,713.12	8,274.40
	ANNUALLY	122,541.12	215,134.40
E10	HOURLY	63.037	110.673
	BI/WEEKLY	5,042.96	8,853.84
	ANNUALLY	131,116.96	230,199.84

- A. An employee promoted from the general pay schedule to an executive pay range will receive a 10% increase or go to the minimum of the new executive grade, whichever is higher.
- B. An employee promoted one executive pay grade will receive a 5% increase or the minimum of the new range, whichever is higher.
- C. An employee promoted two or more executive pay ranges will receive a 10% increase or the minimum of the new range, whichever is higher.



FIRE RESCUE PAY SCHEDULE



FIRE RESCUE

JOB CLASSIFICATION TITLE	SPEC #	JOB CLASSIFICATION TITLE	SPEC #
<u>Fire Rescue Bargaining Unit</u>		FIRE RESCUE BROADCAST FACILITY COORDINATOR	07403
ALARM OFFICE MANAGER	07428	FIRE RESCUE BUILDING COORDINATOR	07427
ARFF CAPTAIN	07437	FIRE RESCUE COMMUNICATIONS COORDINATOR	07429
BATTALION CHIEF	07440	FIRE RESCUE ELECTRONICS TECHNICIAN	07418
CAPTAIN	07420	FIRE RESCUE INVENTORY SPECIALIST	07423
COMMUNICATIONS CENTER QUALITY ASSURANCE MANAGER	07441	FIRE RESCUE MATERIALS MANAGER	07406
COMMUNICATIONS CENTER TRAINING SUPERVISOR	07416	FIRE RESCUE RESPIRATORY PROTECTION MANAGER	07424
COMMUNICATOR III	07411	FIRE RESCUE SUPPORT SERVICES DRIVER	07435
COMMUNICATOR SUPERVISOR	07409	FIRE RESCUE TV PRODUCER/DIRECTOR	07410
DISTRICT CHIEF	07430	FIRE RESCUE VIDEO PRODUCTION MANAGER	07402
DRIVER OPERATOR	07405	FIRE SAFETY SPECIALIST	07421
EMS CAPTAIN	07439	FIREFIGHTER	07400
EXERCISE PHYSIOLOGIST	07425	FIREFIGHTER/PARAMEDIC	07400P
FACILITY TECHNICIAN	07434	FLIGHT MEDIC	07404
FIRE APPARATUS MAINTENANCE SUPERINTENDENT	07414	LIEUTENANT	07415
FIRE APPARATUS TECHNICIAN II	07413	RESPIRATORY PROTECTION SPECIALIST	07433



FIRE RESCUE

JOB CLASSIFICATION TITLE	SPEC #	JOB CLASSIFICATION TITLE	SPEC #
SPECIAL OPERATIONS CAPTAIN	07436		
STAFF CAPTAIN	07438		
WELLNESS COORDINATOR	07426		

October 1, 2009

2% ATB

Non Shift Personnel

	New Fire Safety Specialist	
	Annual	Hourly
Step 1	\$61,763.52	\$29.694
Step 2	\$64,852.32	\$31.179
Step 3	\$68,095.04	\$32.738
Step 4	\$71,500.00	\$34.375
Step 5	\$75,075.52	\$36.094
Step 6		

	Fire Safety Specialist	
	Annual	Hourly
	\$64,977.12	\$31.239
	\$68,226.08	\$32.801
	\$71,637.28	\$34.441
	\$75,219.04	\$36.163
	\$78,979.68	\$37.971
	\$82,929.60	\$39.870

	New Electronics Technician	
	Annual	Hourly
Step 1	\$53,601.60	\$25.770
Step 2	\$56,282.72	\$27.059
Step 3	\$59,096.96	\$28.412
Step 4	\$62,052.64	\$29.833
Step 5	\$65,156.00	\$31.325
Step 6	\$68,413.28	\$32.891

	Electronics Technician	
	Annual	Hourly
	\$56,422.08	\$27.126
	\$59,242.56	\$28.482
	\$62,204.48	\$29.906
	\$65,314.08	\$31.401
	\$68,579.68	\$32.971
	\$72,009.60	\$34.620

	Communications Coordinator	
	Annual	Hourly
	\$67,966.08	\$32.676
	\$71,364.80	\$34.310
	\$74,934.08	\$36.026
	\$78,680.16	\$37.827

	Video Production Manager	
	Annual	Hourly
Step 1	\$53,474.72	\$25.709
Step 2	\$56,147.52	\$26.994
Step 3	\$58,955.52	\$28.344
Step 4	\$61,902.88	\$29.761
Step 5	\$64,997.92	\$31.249
Step 6	\$68,246.88	\$32.811
Step 7	\$71,660.16	\$34.452

	TV Producer/Director	
	Annual	Hourly
	\$41,835.04	\$20.113
	\$43,927.52	\$21.119
	\$46,124.00	\$22.175
	\$48,430.72	\$23.284
	\$50,851.84	\$24.448
	\$53,393.60	\$25.670
	\$56,064.32	\$26.954

	TV Production Engineer	
	Annual	Hourly
	\$43,998.24	\$21.153
	\$46,198.88	\$22.211
	\$48,509.76	\$23.322
	\$50,935.04	\$24.488
	\$53,480.96	\$25.712
	\$56,155.84	\$26.998
	\$58,963.84	\$28.348

October 1, 2009

2% ATB

Non Shift Personnel

	Wellness Coordinator		Exercise Physiologist		Support Services Driver	
	Annual	Hourly	Annual	Hourly	Annual	Hourly
Step 1	\$60,723.52	\$29.194	\$49,963.68	\$24.021	\$30,467.84	\$14.648
Step 2	\$63,760.32	\$30.654	\$52,461.76	\$25.222	\$31,990.40	\$15.380
Step 3	\$66,948.96	\$32.187	\$55,084.64	\$26.483	\$33,589.92	\$16.149
Step 4	\$70,295.68	\$33.796	\$57,838.56	\$27.807	\$35,268.48	\$16.956
Step 5	\$73,810.88	\$35.486	\$60,729.76	\$29.197	\$37,032.32	\$17.804
Step 6	\$77,500.80	\$37.260	\$63,766.56	\$30.657	\$38,883.52	\$18.694
Step 7	\$81,375.84	\$39.123	\$66,955.20	\$32.190	\$40,828.32	\$19.629

	New Apparatus Tech. II		Apparatus Tech. II		New Apparatus Maint. Supt.	
	Annual	Hourly	Annual	Hourly	Annual	Hourly
Step 1	\$53,601.60	\$25.770	\$62,805.60	\$30.195	\$67,061.28	\$32.241
Step 2	\$56,282.72	\$27.059	\$65,946.40	\$31.705	\$70,414.24	\$33.853
Step 3	\$59,096.96	\$28.412	\$69,243.20	\$33.290	\$73,935.68	\$35.546
Step 4	\$62,052.64	\$29.833	\$72,706.40	\$34.955	\$77,631.84	\$37.323
Step 5	\$65,156.00	\$31.325	\$76,342.24	\$36.703	\$81,513.12	\$39.189
Step 6	\$68,413.28	\$32.891	\$80,159.04	\$38.538		
Step 7	\$71,834.88	\$34.536	\$84,167.20	\$40.465		

	Apparatus Maint. Supt.		Facility Technician		Building Coordinator	
	Annual	Hourly	Annual	Hourly	Annual	Hourly
Step 1	\$74,526.40	\$35.830	\$42,887.52	\$20.619		
Step 2	\$78,253.76	\$37.622	\$45,032.00	\$21.650		
Step 3	\$82,166.24	\$39.503	\$47,284.64	\$22.733	\$54,385.76	\$26.147
Step 4	\$86,274.24	\$41.478	\$49,649.60	\$23.870	\$57,104.32	\$27.454
Step 5	\$90,588.16	\$43.552	\$52,133.12	\$25.064	\$59,960.16	\$28.827
Step 6			\$54,739.36	\$26.317	\$62,957.44	\$30.268
Step 7			\$57,476.64	\$27.633		

October 1, 2009

2% ATB

Non Shift Personnel

	Materials Manager	
	Annual	Hourly
Step 1	\$45,724.64	\$21.983
Step 2	\$48,010.56	\$23.082
Step 3	\$50,410.88	\$24.236
Step 4	\$52,931.84	\$25.448
Step 5	\$55,577.60	\$26.720
Step 6	\$58,356.48	\$28.056
Step 7	\$61,274.72	\$29.459

	Inventory Specialist	
	Annual	Hourly
	\$35,484.80	\$17.060
	\$37,259.04	\$17.913
	\$39,122.72	\$18.809
	\$41,077.92	\$19.749
	\$43,130.88	\$20.736
	\$45,287.84	\$21.773
	\$47,552.96	\$22.862

	Respiratory Protection Spec.	
	Annual	Hourly
Step 1	\$42,910.40	\$20.630
Step 2	\$45,056.96	\$21.662
Step 3	\$47,309.60	\$22.745
Step 4	\$49,674.56	\$23.882
Step 5	\$52,158.08	\$25.076
Step 6	\$54,766.40	\$26.330
Step 7	\$57,505.76	\$27.647

	Respiratory Protection Mgr.	
	Annual	Hourly
	\$47,307.52	\$22.744
	\$49,672.48	\$23.881
	\$52,156.00	\$25.075
	\$54,764.32	\$26.329
	\$57,501.60	\$27.645
	\$60,376.16	\$29.027
	\$63,394.24	\$30.478

	Alarm Office Manager	
	Annual	Hourly
	\$65,289.12	\$31.389
	\$68,552.64	\$32.958
	\$71,980.48	\$34.606
	\$75,578.88	\$36.336
	\$79,358.24	\$38.153

	Communicator III	
	Annual	Hourly
Step 1	\$40,605.76	\$19.522
Step 2	\$42,635.84	\$20.498
Step 3	\$44,767.84	\$21.523
Step 4	\$47,005.92	\$22.599
Step 5	\$49,356.32	\$23.729
Step 6	\$51,823.20	\$24.915
Step 7	\$54,414.88	\$26.161
Step 8	\$57,135.52	\$27.469

	Communicator Supervisor	
	Annual	Hourly
	\$49,352.16	\$23.727
	\$51,819.04	\$24.913
	\$54,410.72	\$26.159
	\$57,131.36	\$27.467
	\$59,987.20	\$28.840
	\$62,986.56	\$30.282
	\$66,135.68	\$31.796
	\$69,442.88	\$33.386

	Comm. Ctr. Training Supv.	
	Annual	Hourly
	\$49,352.16	\$23.727
	\$51,819.04	\$24.913
	\$54,410.72	\$26.159
	\$57,131.36	\$27.467
	\$59,987.20	\$28.840
	\$62,986.56	\$30.282
	\$66,135.68	\$31.796
	\$69,442.88	\$33.386

April 1, 2010

1% ATB

Non Shift Personnel

	New Fire Safety Specialist	
	Annual	Hourly
Step 1	\$62,381.28	\$29.991
Step 2	\$65,501.28	\$31.491
Step 3	\$68,777.28	\$33.066
Step 4	\$72,215.52	\$34.719
Step 5	\$75,826.40	\$36.455
Step 6		

	Fire Safety Specialist	
	Annual	Hourly
	\$65,626.08	\$31.551
	\$68,908.32	\$33.129
	\$72,352.80	\$34.785
	\$75,969.92	\$36.524
	\$79,768.00	\$38.350
	\$83,757.44	\$40.268

	New Electronics Technician	
	Annual	Hourly
Step 1	\$54,138.24	\$26.028
Step 2	\$56,844.32	\$27.329
Step 3	\$59,685.60	\$28.695
Step 4	\$62,670.40	\$30.130
Step 5	\$65,804.96	\$31.637
Step 6	\$69,095.52	\$33.219

	Electronics Technician	
	Annual	Hourly
	\$56,985.76	\$27.397
	\$59,835.36	\$28.767
	\$62,826.40	\$30.205
	\$65,967.20	\$31.715
	\$69,266.08	\$33.301
	\$72,729.28	\$34.966

	Communications Coordinator	
	Annual	Hourly
	\$68,646.24	\$33.003
	\$72,078.24	\$34.653
	\$75,682.88	\$36.386
	\$79,466.40	\$38.205

	Video Production Manager	
	Annual	Hourly
Step 1	\$54,009.28	\$25.966
Step 2	\$56,709.12	\$27.264
Step 3	\$59,544.16	\$28.627
Step 4	\$62,520.64	\$30.058
Step 5	\$65,646.88	\$31.561
Step 6	\$68,929.12	\$33.139
Step 7	\$72,375.68	\$34.796

	TV Producer/Director	
	Annual	Hourly
	\$42,253.12	\$20.314
	\$44,366.40	\$21.330
	\$46,585.76	\$22.397
	\$48,915.36	\$23.517
	\$51,361.44	\$24.693
	\$53,930.24	\$25.928
	\$56,625.92	\$27.224

	TV Production Engineer	
	Annual	Hourly
	\$44,439.20	\$21.365
	\$46,660.64	\$22.433
	\$48,994.40	\$23.555
	\$51,444.64	\$24.733
	\$54,017.60	\$25.970
	\$56,719.52	\$27.269
	\$59,554.56	\$28.632

April 1, 2010

1% ATB

Non Shift Personnel

	Wellness Coordinator		Exercise Physiologist		Support Services Driver	
	Annual	Hourly	Annual	Hourly	Annual	Hourly
Step 1	\$61,330.88	\$29.486	\$50,462.88	\$24.261	\$30,771.52	\$14.794
Step 2	\$64,396.80	\$30.960	\$52,985.92	\$25.474	\$32,310.72	\$15.534
Step 3	\$67,616.64	\$32.508	\$55,635.84	\$26.748	\$33,926.88	\$16.311
Step 4	\$70,996.64	\$34.133	\$58,416.80	\$28.085	\$35,624.16	\$17.127
Step 5	\$74,547.20	\$35.840	\$61,337.12	\$29.489	\$37,404.64	\$17.983
Step 6	\$78,274.56	\$37.632	\$64,403.04	\$30.963	\$39,274.56	\$18.882
Step 7	\$82,189.12	\$39.514	\$67,622.88	\$32.511	\$41,238.08	\$19.826
	New Apparatus Tech. II		Apparatus Tech. II		New Apparatus Maint. Supt.	
	Annual	Hourly	Annual	Hourly	Annual	Hourly
Step 1	\$54,138.24	\$26.028	\$63,433.76	\$30.497	\$67,731.04	\$32.563
Step 2	\$56,844.32	\$27.329	\$66,605.76	\$32.022	\$71,117.28	\$34.191
Step 3	\$59,685.60	\$28.695	\$69,935.84	\$33.623	\$74,674.08	\$35.901
Step 4	\$62,670.40	\$30.130	\$73,432.32	\$35.304	\$78,407.68	\$37.696
Step 5	\$65,804.96	\$31.637	\$77,103.52	\$37.069	\$82,328.48	\$39.581
Step 6	\$69,095.52	\$33.219	\$80,957.76	\$38.922		
Step 7	\$72,550.40	\$34.880	\$85,005.44	\$40.868		
	Apparatus Maint. Supt.		Facility Technician		Building Coordinator	
	Annual	Hourly	Annual	Hourly	Annual	Hourly
Step 1	\$75,271.04	\$36.188	\$43,316.00	\$20.825		
Step 2	\$79,033.76	\$37.997	\$45,481.28	\$21.866		
Step 3	\$82,985.76	\$39.897	\$47,754.72	\$22.959	\$54,928.64	\$26.408
Step 4	\$87,135.36	\$41.892	\$50,142.56	\$24.107	\$57,674.24	\$27.728
Step 5	\$91,492.96	\$43.987	\$52,648.96	\$25.312	\$60,557.12	\$29.114
Step 6			\$55,282.24	\$26.578	\$63,585.60	\$30.570
Step 7			\$58,046.56	\$27.907		

April 1, 2010

1% ATB

Non Shift Personnel

	Materials Manager	
	Annual	Hourly
Step 1	\$46,182.24	\$22.203
Step 2	\$48,491.04	\$23.313
Step 3	\$50,916.32	\$24.479
Step 4	\$53,462.24	\$25.703
Step 5	\$56,135.04	\$26.988
Step 6	\$58,940.96	\$28.337
Step 7	\$61,888.32	\$29.754

	Inventory Specialist	
	Annual	Hourly
	\$35,840.48	\$17.231
	\$37,633.44	\$18.093
	\$39,515.84	\$18.998
	\$41,491.84	\$19.948
	\$43,565.60	\$20.945
	\$45,743.36	\$21.992
	\$48,031.36	\$23.092

	Respiratory Protection Spec.	
	Annual	Hourly
Step 1	\$43,338.88	\$20.836
Step 2	\$45,506.24	\$21.878
Step 3	\$47,781.76	\$22.972
Step 4	\$50,171.68	\$24.121
Step 5	\$52,680.16	\$25.327
Step 6	\$55,313.44	\$26.593
Step 7	\$58,079.84	\$27.923

	Respiratory Protection Mgr.	
	Annual	Hourly
	\$47,779.68	\$22.971
	\$50,169.60	\$24.120
	\$52,678.08	\$25.326
	\$55,311.36	\$26.592
	\$58,077.76	\$27.922
	\$60,981.44	\$29.318
	\$64,030.72	\$30.784

	Alarm Office Manager	
	Annual	Hourly
	\$65,942.24	\$31.703
	\$69,239.04	\$33.288
	\$72,700.16	\$34.952
	\$76,336.00	\$36.700
	\$80,152.80	\$38.535

	Communicator III	
	Annual	Hourly
Step 1	\$41,011.36	\$19.717
Step 2	\$43,062.24	\$20.703
Step 3	\$45,215.04	\$21.738
Step 4	\$47,476.00	\$22.825
Step 5	\$49,849.28	\$23.966
Step 6	\$52,341.12	\$25.164
Step 7	\$54,957.76	\$26.422
Step 8	\$57,705.44	\$27.743

	Communicator Supervisor	
	Annual	Hourly
	\$49,845.12	\$23.964
	\$52,336.96	\$25.162
	\$54,953.60	\$26.420
	\$57,701.28	\$27.741
	\$60,586.24	\$29.128
	\$63,614.72	\$30.584
	\$66,795.04	\$32.113
	\$70,135.52	\$33.719

	Comm. Ctr. Training Supv.	
	Annual	Hourly
	\$49,845.12	\$23.964
	\$52,336.96	\$25.162
	\$54,953.60	\$26.420
	\$57,701.28	\$27.741
	\$60,586.24	\$29.128
	\$63,614.72	\$30.584
	\$66,795.04	\$32.113
	\$70,135.52	\$33.719

