

**PALM BEACH COUNTY
BOARD OF COUNTY COMMISSIONERS
AGENDA ITEM SUMMARY**

Meeting Date:	April 3, 2012	Consent [X]	Regular []
		Public Hearing []	
Submitted By:	Water Utilities Department		
Submitted For:	Westgate CRA		

I. EXECUTIVE BRIEF

Motion and title: Staff recommends motion to approve: a Consultant Service Authorization No. 4 to the Engineering/Professional Services Contract with Keshavarz & Associates, Inc. (R2011-0636) for the construction administration services for Westgate/Belvedere Homes Infrastructure Improvement Project, Phase I in the amount of \$381,535.

Summary: On May 3, 2011, the Board of County Commissioners approved the Water Utilities Department (WUD) Engineering/Professional Services Contract with Keshavarz & Associates, Inc. (R2011-0636). This Authorization No. 4 provides construction services relating to grading, paving and drainage components for the Westgate/Belvedere Homes Infrastructure Improvement Project, Phase I. The Small Business Enterprise (SBE) participation goal established by the SBE Ordinance (R2002-0064) is 15% overall. The contract with Keshavarz & Associates, Inc. provides for SBE participation of 15%. This Authorization includes 100% overall participation. The cumulative SBE participation is 100% overall. Keshavarz and Associates, Inc. is a Palm Beach County Company. (WUD Project No. 11-022) District 7 (JM)

Background and Justification: Westgate/Belvedere Homes CRA wants to improve the Belvedere Homes Community Infrastructure. CRA has secured funding for various agencies for the Belvedere Homes Infrastructure Improvement Projects, Phase I, that includes the grading, paving, drainage and potable water improvement and the installation of a new wastewater collection system. This Consultant Service Authorization is for the Construction Services for Belvedere Homes Infrastructure Improvement Projects, Phase I.

Attachments:

1. Location Map
2. Two (2) Original Consultant Service Authorization No. 4

Recommended By:  3/15/12
 Department Director Date

Approved By:  3/28/12
 Assistant County Administrator Date

II. FISCAL IMPACT ANALYSIS

A. Five Year Summary of Fiscal Impact:

Fiscal Years	2012	2013	2014	2015	2016
Capital Expenditures	<u>\$381,535.00</u>	<u>0</u>	<u>0</u>	<u>0</u>	<u>0</u>
External Revenues	<u>0</u>	<u>0</u>	<u>0</u>	<u>0</u>	<u>0</u>
Program Income (County)	<u>0</u>	<u>0</u>	<u>0</u>	<u>0</u>	<u>0</u>
In-Kind Match County	<u>0</u>	<u>0</u>	<u>0</u>	<u>0</u>	<u>0</u>
NET FISCAL IMPACT	<u>\$381,535.00</u>	<u>0</u>	<u>0</u>	<u>0</u>	<u>0</u>
# ADDITIONAL FTE POSITIONS (Cumulative)	<u>0</u>	<u>0</u>	<u>0</u>	<u>0</u>	<u>0</u>
Budget Account No.:	Fund <u>4011</u>	Dept <u>721</u>	Unit <u>W006</u>	Object <u>6543</u>	

Is Item Included in Current Budget? Yes X No

Reporting Category N/A

B. Recommended Sources of Funds/Summary of Fiscal Impact:

One (1) time capital expenditure from the user fees and balance brought forward

C. Department Fiscal Review: Debra monet

III. REVIEW COMMENTS

A. OFMB Fiscal and/or Contract Development and Control Comments:

[Signature] 2/15/12
OFMB
3/15/12

[Signature] 3/26/12
Contract Development and Control
3-22-12 [Signature]

B. Legal Sufficiency:

[Signature] 3/28/12
Assistant County Attorney

C. Other Department Review

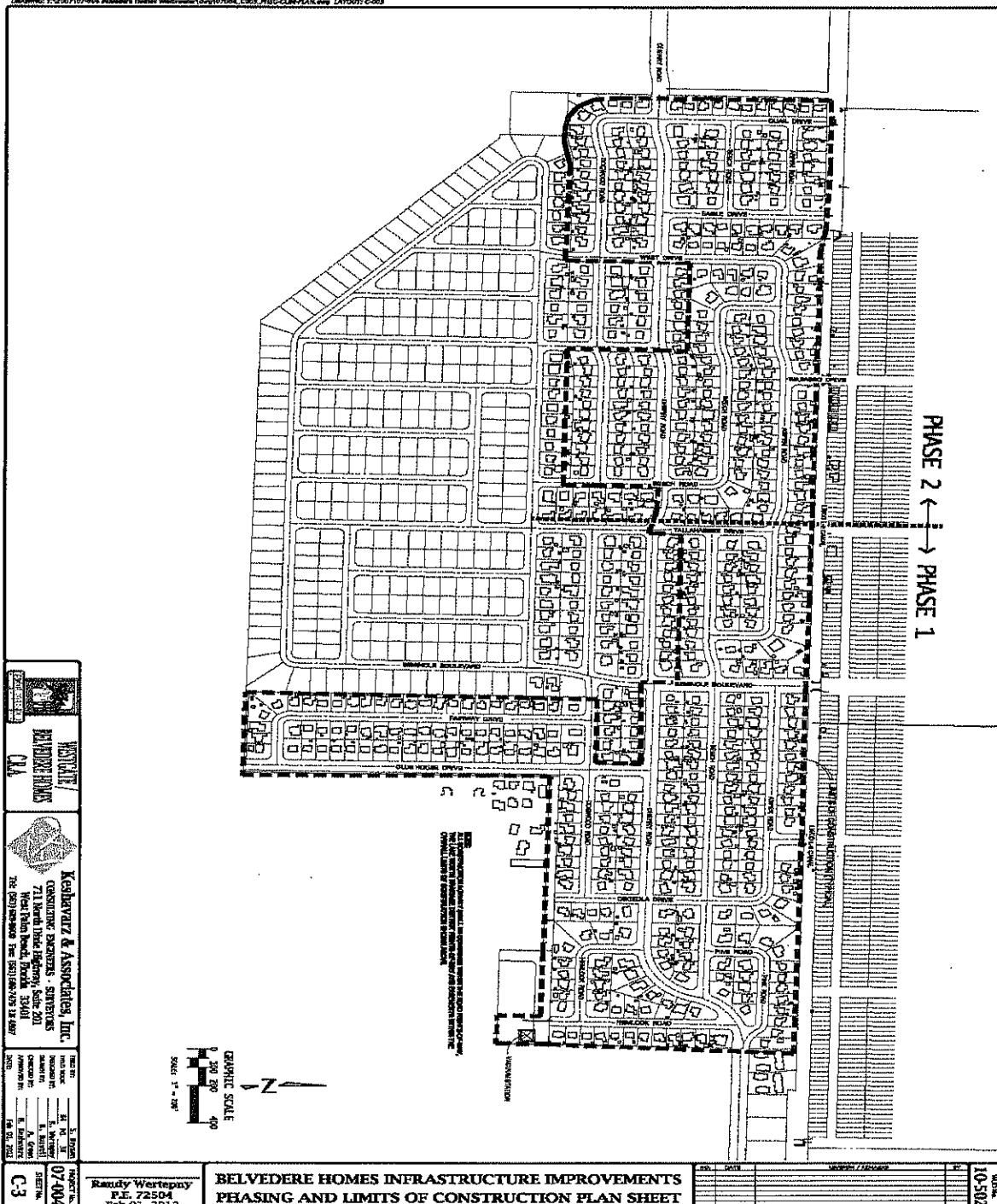
Department Director


This summary is not to be used as a basis for payment.

ATTACHMENT 1

LOCATION MAP

PLT07 DATE: Feb 01, 2012 7:50:44 PM BY: jwagner
 C:\PROJECTS\72504\DWG\PLT07.dwg: 72504\DWG\PLT07.dwg: 72504\DWG\PLT07.dwg LAYOUT: C:\PROJECTS\72504\DWG\PLT07.dwg: 72504\DWG\PLT07.dwg



 Keshavarz & Associates, Inc. CONSULTING ENGINEERS - SURVEYORS 711 North Lake Parkway, Suite 201 West Palm Beach, Florida 33411 561-833-8888 FAX 561-833-8889	
PROJECT NO. 07-4004 SHEET NO. C-3	DATE: Feb 01, 2012 DRAWN BY: A. GOMEZ CHECKED BY: R. WERTEPNY IN CHARGE: R. WERTEPNY

BELVEDERE HOMES INFRASTRUCTURE IMPROVEMENTS
PEASING AND LIMITS OF CONSTRUCTION PLAN SHEET

10-502

CONSULTANT SERVICES AUTHORIZATION NO. 4

Project No. WUD 11-022

Budget Line Item No. ⁷²¹4011-72-W006-6543 *Hu*

Project Title Belvedere Homes Infrastructure Improvements

District No.: 2

THIS AUTHORIZATION #4 to the Contract for Consulting/Professional Services dated May 3rd, 2011 with an effective date of June 3rd, 2011 (Resolution/Document R2011-0636), by and between Palm Beach County and the Consultant identified herein, is for the Consultant Services described in Item 3 of this Authorization. The Contract provides for 100% SBE participation overall. This Consultant Services Authorization includes 100% overall participation. The cumulative SBE participation, including this authorization is 100% overall. Additional authorization will be utilized to meet or exceed the stated overall participation goal.

1. CONSULTANT: Keshavarz & Associates, Inc.
2. ADDRESS: 711 N Dixie Highway, Suite 201, West Palm Beach, FL 33401
3. Description of Services to be provided by the Consultant:
Construction Phase Services for Belvedere Homes Infrastructure Phase I
4. Services completed by the Consultant to date:
See EXHIBIT "B" and "C".
5. Consultant shall begin work promptly on the requested services.
6. The compensation to be paid to the Consultant for providing the requested services shall be:
 - A. Computation of time charges plus expenses, not to exceed \$ N/A
 - B. Fixed price of \$ 381,535.00
7. This Authorization may be terminated by the County without cause or prior notice. In the event of termination not the fault of the Consultant, the Consultant shall be compensated for all services performed through the date of termination, together with reimbursable expenses (if applicable) then due.

PROJECT NO. WUD 11-022 AUTHORIZATION NO. 4

Budget Line Item No. ⁷²¹4011-72-W006-6543 *Att*

8. EXCEPT AS HEREBY AMENDED, CHANGED OR MODIFIED, all other terms, conditions and obligations of the Contract dated May 3rd, 2011 with an effective date of June 3rd, 2011 remain in full force and effect.

IN WITNESS WHEREOF, this Authorization is accepted, subject to the terms, conditions and obligations of the aforementioned Contract.

CONSULTANT:

FIRM: Keshavarz & Associates, Inc.

Signed: 

Typed Name: Maziar Keshavarz, P.E.

Title: President

Date: 2/3/12

PALM BEACH COUNTY:

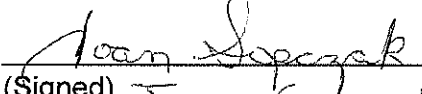
Signed: _____

Typed Name: Shelley Vana *SV*

Title: Chair

Date: _____

ATTEST:


(Signed) Jean Sopczak

ATTEST:

Sharon R. Bock, Clerk & Comptroller

(Deputy Clerk)

APPROVED AS TO FORM AND
LEGAL SUFFICIENCY:

(County Attorney)

EXHIBIT A

CONSULTANT SERVICE AUTHORIZATION NO. 4

PALM BEACH COUNTY WATER UTILITIES DEPARTMENT ENGINEERING/PROFESSIONAL SERVICES

SCOPE OF WORK FOR Construction Phase Services Belvedere Homes Infrastructure Improvements, Phase I WUD 11-022

INTRODUCTION

Palm Beach County (COUNTY) entered into an agreement entitled Contract for Engineering/ Professional Services - Palm Beach County Utilities Department Project No. WUD 11-005 (CONTRACT) with Keshavarz & Associates, Inc. (CONSULTANT) to provide engineering services for various general activities on (Reference Document R2011-0636). This Consultant Service Authorization will be performed under that CONTRACT.

This Consultant Services Authorization encompasses providing services related to the project known as "Belvedere Homes Infrastructure Improvements, Phase I"

BACKGROUND

Westgate/Belvedere Homes CRA (OWNER) wishes to improve the Belvedere Homes' Communities infrastructure. To that end, it has secured funding from various agencies, including the COUNTY who will also participate in administrating the construction of the systems designed by CONSULTANT. This Consultant Services Authorization is for the **Construction Phase Services for Belvedere Homes Infrastructure Improvements, Phase I.**

SCOPE OF SERVICES

CONSULTANT shall act as the "Engineer of Record" (EOR) during construction of the Grading, Paving and Drainage components and perform customary construction administration services, field observations, provision of "plan revision" services as necessary, and coordinate with all relevant entities involved;

CONSULTANT shall act in a support role to the COUNTY forces during construction of the Water and Wastewater, including Vacuum System components as COUNTY has elected to be the EOR on this portion of the work.

CONSULTANT shall perform all field and office services to acquire record survey data from the completed components and produce certifiable "Record Drawings" for those components designed by CONSULTANT.

Task 1

CONSTRUCTION PHASE SERVICES relating to Grading, Paving and Drainage Components, Phase I

This proposal includes provision of field and office construction observation and administration services to properly observe the substantial conformance of construction with the approved plans prepared by CONSULTANT. These services shall be performed as needed to the level determined by CONSULTANT to enable CONSULTANT to provide proper advocacy for OWNER during construction and also the required Certifications of Completion to the applicable jurisdictional agencies for grading, paving and drainage components only. Liaison services with regulating agencies and COUNTY's contractor (CONTRACTOR) of choice will also be included towards that goal.

This proposal is based on an estimated period of Two Hundred Forty-Five (245) Days for construction (215 days) and finalization (30 days) of the infrastructure improvements commencing with the CONTRACTOR's receipt of "Notice of Commencement" from the COUNTY and ending with the issuance of the last "Construction Completion Statement" by CONSULTANT. CONSULTANT's time frame of services is 30 days prior to and 30 days preceding those dates for a total of Three Hundred Five (305) days.

While the necessary steps outlined in this proposal will be performed under the lump sum fee listed in this proposal, the activities due to the delayed project completion or re-testing/re-visits due to failed first time attempts by the Contractor could result in additional fees.

This Scope of Services and Schedule of Compensation is based upon all infrastructure improvements being completed in a single phase currently identified as "Phase I" unless specifically mentioned herein.

I(a). COUNTY Representation and Contract Management Services: CONSULTANT, in this case, will ultimately certify the compliance of constructed facilities with the approved plans, but will also act as the COUNTY's main agent and contact with the CONTRACTOR and regulating agencies in reference to the subject project's grading, paving and drainage components. While CONSULTANT's role is not one of "Construction Management", it is one of strong advocacy and comprehensive representation of the OWNER and COUNTY's interests. COUNTY will not have any responsibility as to coordinating the activities required to construct and release the subject facilities. While COUNTY will perform the "Bid Phase" services and enter the "Agreement to Construct" (contract with the CONTRACTOR selected by CONSULTANT and COUNTY) for the entire "Phase I", CONSULTANT shall be given the authority and responsibility to carry out the required services from award of contract to final releases and payment to CONTRACTOR on the grading, paving and drainage portion of the work.

I(b). Project Start Up, Orientation and Pre-Construction Meeting: CONSULTANT shall conduct a pre-construction meeting with COUNTY, chosen CONTRACTOR, and other pertinent parties in attendance. At the time of the pre-construction meeting, the plans will be issued for construction purposes. CONSULTANT shall be responsible for preparing and issuing the meeting minutes. This task will also include all CONSULTANT's efforts in connection with the initial construction phase orientation, coordination with the COUNTY and Contractor and resulting in a pre-construction meeting. CONSULTANT shall review the Contractor's initial project construction schedule, and review the schedule at appropriate intervals (no less than monthly) throughout the construction period.

I(c). Shop Drawing Review: CONSULTANT shall review and evaluate shop drawings, diagrams, illustrations, catalog data, product schedules, samples, results of tests and inspections, and other data which the CONTRACTOR is required to submit, to show that the materials proposed to be used in the work are in substantial compliance with the CONSULTANT's drawings and specifications. All suggested "Substitutions" presented by CONTRACTOR for project's materials and fabrication will also be evaluated if submitted at this stage or throughout the course of the project.

I(d). Routine and Regular Construction Observation: CONSULTANT will make periodic visits to the project site for the purpose of observing progress and general quality of the ongoing work and to determine if the work is proceeding in substantial compliance with the construction drawings and specifications related to the grading, paving and drainage components of Phase I. This effort is directed toward assisting COUNTY and OWNER in knowing that the completed project will conform with requirements contained in the approved drawings, specifications and regulatory agency permits. CONSULTANT will not be responsible for the work of the CONTRACTOR or others. CONSULTANT will not be responsible for construction means, methods, sequences, procedures, schedule or safety measures. CONSULTANT will not provide full time construction observation, but will keep in close contact with CONTRACTOR and COUNTY's Project Manager with respect to the project's progress to the level necessary to provide CONSULTANT the opportunity to be present at the site during critical stages of construction by giving proper notice prior to the specific activity. CONSULTANT shall be responsible to inform all pertinent parties who are tasked with the responsibility of observing the construction of the grading, paving and drainage components of this project upon learning of the plan to execute various relevant tasks by the CONTRACTOR. Those entities are anticipated to be:

- Palm Beach County Water Utilities Department (COUNTY)
- Palm Beach County Engineering and Public Works
- Lake Worth Drainage District
- South Florida Water Management District
- Florida Power & Light Company
- AT&T
- Comcast Cable Co.

Following each field observation, a report shall be prepared by the CONSULTANT and provided to the COUNTY, OWNER and CONTRACTOR. The following outlines a general schedule of the CONSULTANT's required field observations and other activities for each site component:

SITE CLEARING, EARTHWORKS, CIVIL WORKS relating to Grading, Paving and Drainage Components, Phase I

- Observe erosion control devices/measures
- Observe all clearing and grubbing
- Monitor dewatering activities including daily testing results
- Observe all new structures and materials prior to installation
- Observe removal and reinstallation of dry utilities
- Observe all swale grading and shaping
- Observe abandonment of existing drainage outfall(s)
- Observe placement of all rock rip-rap
- Observe storm culvert connections to drainage structures prior to backfill
- Complete on-site subgrade string line observation, when necessary
- Complete on-site pavement base string line observation, when necessary
- Review backfill density test reports prepared by others for compliance with design specifications when necessary
- Observe general grading of roads and all proposed impacts to road right-of-way for compliance with design documents. The results of this review are to be field verified with as-built cross-sections to be completed by CONSULTANT.
- Observe implementation of proposed signage and pavement marking improvements
- Observe implementation of proposed improvements of sidewalks including ramps and driveways
- Observe implementation of proposed improvements for pump station and it's site. This task is limited to those components designed by CONSULTANT

- Review "Record Drawings", generate comments if necessary and assist CONTRACTOR in providing "Close Out" documentation
- Attend semi-final walk through(s) with pertinent regulating agency and CONTRACTOR and prepare punch list of items to complete work
- Attend one final walk through(s) of paving, grading and drainage components with pertinent regulating agency

NPDES MONITORING

- CONSULTANT shall monitor and prepare daily/weekly reports based on rain fall events and monitor the CONTRACTOR's implemented pollution prevention devices for conformance with federal, state and local regulations.
- CONSULTANT shall maintain a project Storm Water Pollution Prevention Program (SWPPP) log throughout the project duration.
- The CONSULTANT shall not be responsible for any violations incurred due to negligence by the CONTRACTOR.

I(e). Requests for Information: The CONSULTANT shall provide resolution of and assistance with Requests for Information (RFI)'s from the CONTRACTOR or COUNTY.

I(f). Pay Applications: The CONSULTANT shall review the CONTRACTOR's monthly pay applications and provide recommendation for payment based on the construction completion percentage on a set date each month as determined by the COUNTY.

I(g). Final "Construction Completion Statements" and Record Drawings: Final Completion Statements shall be prepared for various project components designed and observed during construction by CONSULTANT as may be required by regulating agencies to release and transfer those systems to "Operation Phase".

CONSULTANT shall attend final walk through(s) with the applicable agencies, review record drawings (based on information provided by CONSULTANT) for sufficiency from the regulatory process approval standpoint, as well as clarity and completeness from the engineering standpoint. All necessary coordination with K&A's Survey Division and relating agencies is included in this task. Completion statements shall be provided by CONSULTANT to regulatory agencies for Phase I only.

Task 2 Water and Wastewater, including Vacuum System, Phase I:

CONSULTANT shall act in a support role to the COUNTY's forces. COUNTY has elected to be the "EOR" on this portion of the work for the construction of Phase I. While COUNTY will be in charge of this part of the work and will issue the required "Final Certification of Completion", CONSULTANT will be available to:

- Assist COUNTY in preparation of the bid package, construction specifications, determination of project schedule, project advertisement and launch process;
- Assist COUNTY during the Bid Phase; respond to "Requests for Information (RFI)" and attend Pre-Bid and Bid Opening meetings;
- Assist in coordination of construction process of different components between various entities involved;
- Provide clarifications and plan revisions if/when requested by COUNTY or CONTRACTOR during the construction phase;
- Act as back-up/secondary observers of the water/wastewater system as needed and requested by COUNTY;
- Provide assistance and input on contractor's pay requests;
- Attend semi-final and final walk-throughs along with COUNTY's forces and assist in project's water and wastewater close-out;

- Provide general consultation and attendance of coordination and project status meetings.

Task 3 **Preparation of "Record Drawings", Phase I:**

CONSULTANT shall perform all field and office services to acquire record survey data from the completed components and produce certifiable "Record Drawings" for those components designed by CONSULTANT.

Under this proposal, CONSULTANT shall only be responsible to coordinate with CONTRACTORS and COUNTY, acquire field data and produce record drawings for the following infrastructure elements:

- Storm drainage structures including: piping, catch basins, conflict structures, endwalls.
- Potable water and fire protection system including: DIP watermain, PVC watermain, sample points, fire hydrants, valves, meter locations. The terminus points of existing asbestos cement watermain which will be left in place is included.
- Wastewater system including: PVC vacuum line and service laterals. The pump house and it's appurtenances are not included except for those components designed by CONSULTANT.
- Roadway improvements, pavement and grading to include: Sections at 100' intervals inclusive of swales and those driveways that correspond to the 100' intervals

COMPENSATION

CONSTRUCTION PHASE SERVICES:

Task 1	Grading, Paving and Drainage, including Pump Station Site, Phase I	\$190,380.00
Task 2	Water and Wastewater, including Vacuum System, Phase I	\$ 72,900.00
Task 3	Preparation of Record Drawings, Phase I (field & office)	\$116,255.00
	Reimbursables	\$ 2,000.00

SBE PARTICIPATION

As prescribed under Section 7.5 of the CONTRACT, SBE participation is included in Attachment C under this Authorization. The attached Schedule 1 defines the SBE participation.

ATTACHMENT – A	Budget Summary
ATTACHMENT – B	Project Schedule
ATTACHMENT – C	SBE Schedules 1&2
ATTACHMENT – D	Location Map

ATTACHMENT A

KESHAVARZ & ASSOCIATES, INC.
 Palm Beach County Water Utilities Department

February 1st, 2012
 K&A Project No. 07-004
 WUD No. 11-022

Belvedere Homes Infrastructure Improvements, Phase I

WORK ELEMENT	Principal	Senior	Project	Engr/ Surv	Const	Senior	Survey	Admin.	Totals by Task
	\$/hr	Project Manager \$/hr	Engineer \$/hr	CAD Tech \$/hr	Project Manager \$/hr	PSM \$/HR	Crew \$/hr	\$/hr	
	\$160.00	\$160.00	\$105.00	\$80.00	\$92.00	\$120.00	\$135.00	\$65.00	
Task 1: Construction Phase Services re: Grading, Paving and Drainage, Phase I	36.00	374.50	405.50	60.00	815.00	0.00	0.00	36.04	\$190,380.00
Task 2: Water and Wastewater, including Vacuum System, Phase I	24.00	86.00	181.50	60.00	325.00	0.00	0.00	23.73	\$72,900.00
Task 3: Preparation of "Record Drawings", Phase I	0.00	0.00	0.00	415.50	0.00	72.00	550.92	0.00	\$116,254.61
TOTAL Hours	60.00	460.50	587.00	535.50	1140.00	72.00	550.92	59.77	\$379,534.61
FEE Estimate	\$9,600.00	\$73,680.00	\$61,635.00	\$42,840.00	\$104,880.00	\$8,640.00	\$74,374.61	\$3,885.00	
Reimbursables, Copies, Prints, Deliveries									\$2,000.00
TOTAL SERVICES					\$381,534.61				

ATTACHMENT A
BUDGET SUMMARY

ATTACHMENT - B

PROJECT SCHEDULE

SCHEDULE

The completion dates for this work will be as follows (starting from CONSULTANT'S receipt of Notice-to-Proceed).

Engineering Services

Completion Date

From Notice to Proceed

Task 1 Grading, Paving and Drainage, Phase I	245 days
Task 2 Water and Wastewater, Phase I	245 days
Task 3 Preparation of Record Drawings, Phase I	255 days

ATTACHMENT C

SCHEDULE #1

LIST OF PROPOSED SBE-M/WBE PRIME/SUBCONTRACTORS

PROJECT NAME: Belvedere Homes Infrastructure Improvements PROJECT NUMBER: WUD 11-022

NAME OF PRIME BIDDER Keshavarz & Associates, Inc.

ADDRESS: 711 N Dixie Hwy, Suite 201, West Palm Beach, FL 33401

CONTACT PERSON: Maziar Keshavarz, P.E.

PHONE NO 561-689-8600 FAX NO. 561-689-7476

BID OPENING DATE: _____

DEPARTMENT _____

PLEASE IDENTIFY ALL APPLICABLE CATEGORIES

Name, Address and Telephone Number of Minority Contractor	(Check one or both Categories)			Dollar Amount				
	Minority Business	Small Business	Black	Hispanic	Women	Caucasian	Other (Please Specify)	
Keshavarz & Associates, Inc. 711 N. Dixie Hwy, #201, WPB 33401 561-689-8600	<input checked="" type="checkbox"/>	<input checked="" type="checkbox"/>						\$381,535.00
	<input type="checkbox"/>	<input type="checkbox"/>						
	<input type="checkbox"/>	<input type="checkbox"/>						
	<input type="checkbox"/>	<input type="checkbox"/>						
	<input type="checkbox"/>	<input type="checkbox"/>						
PRIME CONTRACTOR TO COMPLETE:	TOTAL		\$ -	\$ -	\$ -	\$ -	\$ -	\$ 381,535.00
BID PRICE: \$	381,535.00	Total Value of SBE Participation:	100%					

- NOTE:**
1. The amount listed on this form for a Subcontractor must be supported by price or percentage included on Schedule 2 or a proposal from each Subcontractor listed in order to be counted toward goal attainment.
 2. Firms may be certified by Palm Beach County as an SBE and/or an M/WBE. If firms are certified as both an SBE and M/WBE, please indicate the dollar amount under the appropriate category.
 3. M/WBE information is being collected for tracking purposes only.

ATTACHMENT C

SCHEDULE 2

LETTER OF INTENT TO PERFORM AS AN SBE OR M/WBE SUBCONTRACTOR

PROJECT NO. WUD 11-022 PROJECT NAME: Belvedere Homes Infrastructure, Phase I

TO: Keshavarz & Associates, Inc.
(Name of Prime Bidder)

The undersigned is certified by Palm Beach County as a(n) – (check one or more, as applicable):

Small Business Enterprise X Minority Business Enterprise X

Black Hispanic Women Caucasian Other (Please Specify) X

Date of Palm Beach County Certification: March 25, 2010

The undersigned is prepared to perform the following described work in connection with the above project
(Specify in detail, particular work items or parts thereof to be performed):

Line Item/Lot No.	Item Description	Qty / Units	Unit Price	Total Price
<u>1</u>	<u>Civil Engineering & Surveying</u>	<u>1.00</u>	<u> </u>	<u>\$381,535.00</u>
<u> </u>	<u> </u>	<u> </u>	<u> </u>	<u> </u>
<u> </u>	<u> </u>	<u> </u>	<u> </u>	<u> </u>

at the following price
\$ 381,535.00
(Subcontractor's quote)

And will enter into a formal agreement for work with you conditioned upon your execution of a contract with Palm Beach County. If undersigned intends to sub-subcontract any portion of this subcontract to a non-certified SBE subcontractor, the amount of any such subcontract must be stated: \$ 0.00

The undersigned subcontractor understands that the provision of this form to prime bidder does not prevent subcontractor from providing quotations to other bidders

Keshavarz & Associates, Inc.
(Print Name of SBE/M/WBE Subcontractor)

By: [Signature]
(Signature)

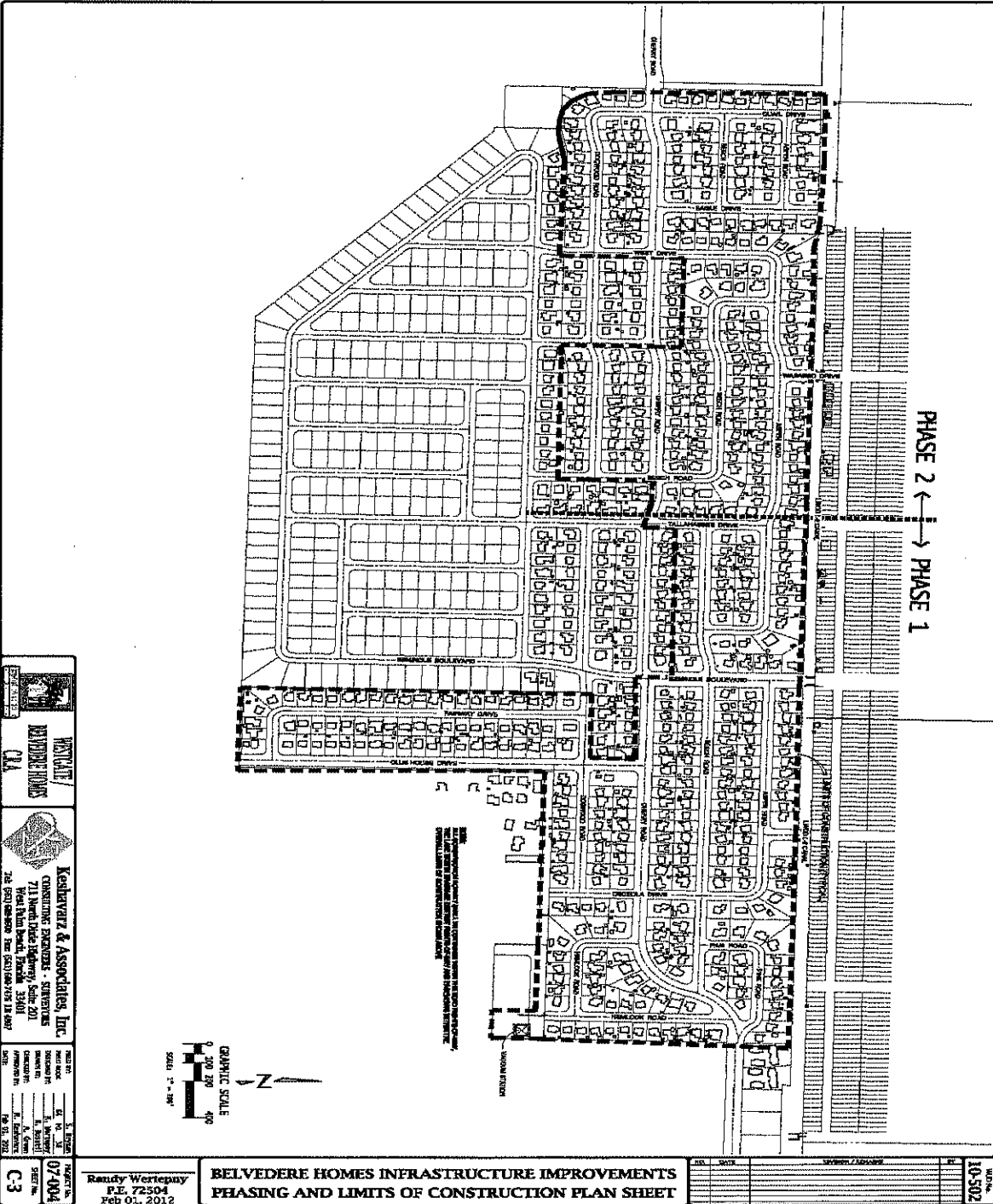
Maziar Keshavarz, P.E., President
(Print name/title of person executing on behalf of SBE-M/WBE Subcontractor)

Date: 2/2/12

ATTACHMENT D

LOCATION MAP

ALOT DATA Feb 01, 2012 1:00:44pm 811 usermap
 DRAWING: 10-502-07-004 Belvedere Homes Infrastructure Improvements - Infrastructure Limits of Construction - LAYOUT: C-003



	IRVINE CALIFORNIA
	Keshavarz & Associates, Inc. CONSULTING ENGINEERS - SURVEYORS 711 North Dune Highway, Suite 201 Irvine, California 92618 Tel: 949.261.8800 Fax: 949.261.8801
DATE: 02/01/12	SCALE: 1" = 400'
PROJECT NO.: 07-404	SHEET NO.: C-3
Randy Wertepny P.E. 72504 Feb 01, 2012	

**BELVEDERE HOMES INFRASTRUCTURE IMPROVEMENTS
 PHASING AND LIMITS OF CONSTRUCTION PLAN SHEET**

NO.	DESCRIPTION	SYMBOL	COLOR
1	LIMITS OF CONSTRUCTION	(Dashed Line)	Black
2	LIMITS OF UTILITIES	(Solid Line)	Red

EXHIBIT - B

AUTHORIZATION STATUS REPORT

(CONTINUED)

SUMMARY AND STATUS OF
REQUESTS FOR AUTHORIZATIONS

Auth. No.	Description	Status	Project Total Amount	Date Approved	WUD No. Assigned	H&S Project No.
1	South County Water Services Replacement Phase II	100%	\$ 196,410.00	7/19/2011	11-097	
2	Village of Palm Springs Area Interconnects	95%	\$ 19,200.00	9/20/2011	11-146	
3	Meadowbrook Dr & L-2 LWDD Canal Aerial Crossings	95%	\$ 3,415.00	9/22/2011	11-034	
4	Belvedere Homes Infrastructure Improvements Phase I	Pending	\$ 381,535.00	pending	11-022	
Total			\$600,560.00			

EXHIBIT - C

AUTHORIZATION STATUS REPORT TELEMETRY, RECLAIMED WATER AND WASTEWATER TREATMENT

SUMMARY OF SBE / MINORITY BUSINESS TRACKING SYSTEM

	Total	SBE
Current Proposal		
Value of Authorization No. 4	\$381,535.00	
Value of M/WBE Letters of Intent	\$381,535.00	\$381,535.00
Actual Percentage	100%	100%
Pending Proposal		
Value of Authorization No.	\$	
Value of M/WBE Letters of Intent	\$	\$
Actual Percentage	0%	0%
Signed Authorizations		
Total Value of Authorizations	\$219,025	
Total Value of M/WBE Signed Subcontracts	\$219,025	\$219,025
Actual Percentage	100%	100%
Signed Authorizations Plus Current Proposals		
Total Value of Authorizations	\$600,560	
Total Value of Subcontracts & Letters of Intent	\$600,560	\$600,560
Actual Percentage	100%	100%
GOAL	100%	100%