

II. FISCAL IMPACT ANALYSIS

A. FIVE YEAR SUMMARY OF FISCAL IMPACT:

Fiscal years	2012	2013	2014	2015	2016
Capital Expenditures	_____	_____	_____	_____	_____
Operating Costs	_____	_____	_____	_____	_____
External Revenues	_____	_____	_____	_____	_____
Program Income (County)	_____	_____	_____	_____	_____
In-kind Match (County)	_____	_____	_____	_____	_____
NET FISCAL IMPACT	<u> *</u>	_____	_____	_____	_____
No. additional FTE positions (Cumulative)	_____	_____	_____	_____	_____

Is item included in current Budget? Yes _____ No _____

Budget Account No.: Fund _____ Dept _____ Unit _____ Object _____
 Revenue Source _____

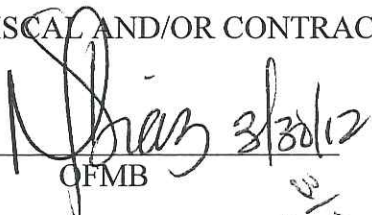
B. RECOMMENDED SOURCES OF FUNDS/SUMMARY OF FISCAL IMPACT:

No Fiscal Impact.

C. DEPARTMENTAL FISCAL REVIEW: _____

III. REVIEW COMMENTS

A. OFMB FISCAL AND/OR CONTRACT DEV. AND CONTROL COMMENTS:

 3/30/12
 _____ OFMB
 3/30/12
 _____ Contract Dev. and Control
 3/30/12

B. LEGAL SUFFICIENCY:

 3/30/12
 _____ Assistant County Attorney

C. Other Department Review:

 Department Director



SHARON R. BOCK
Clerk & Comptroller
Palm Beach County

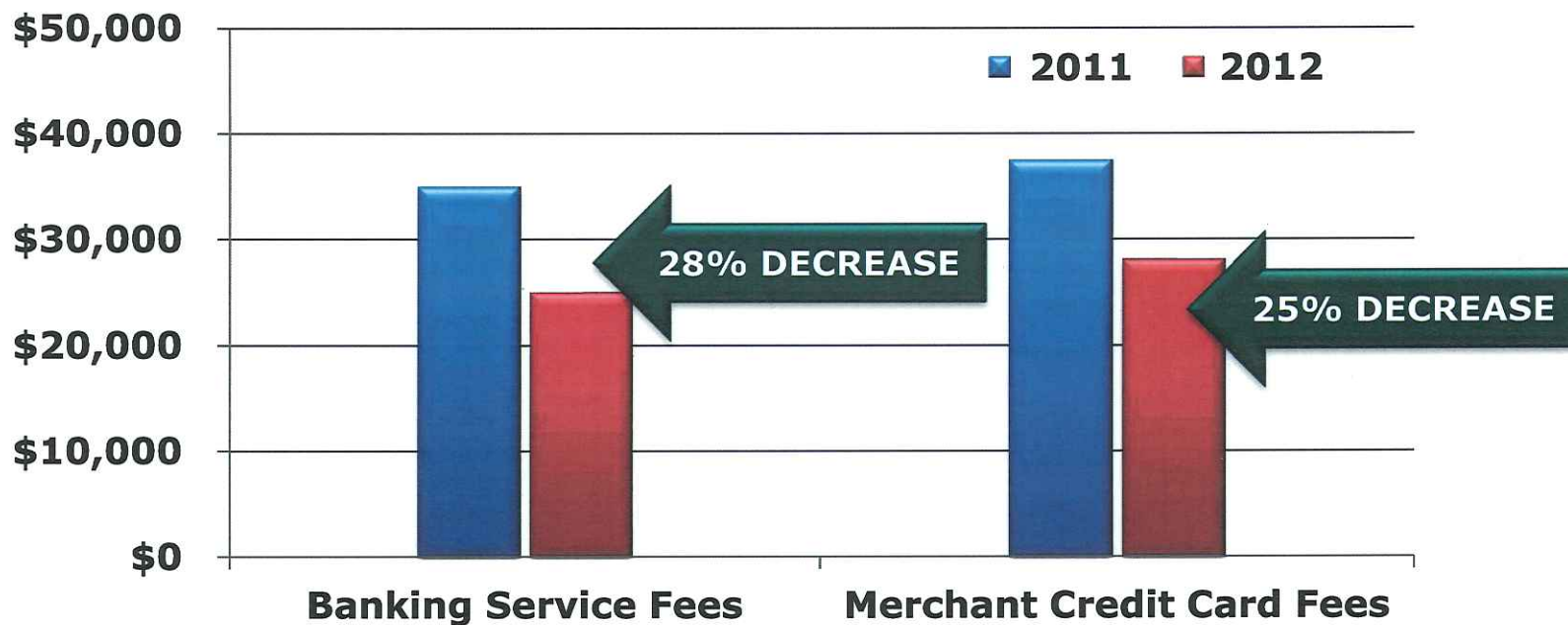
NEW BANKING SERVICES CONTRACT 2012-2015

April 3, 2012



Banking and Merchant Charges

Annual Savings of \$233,000



SHARON R. BOCK
Clerk & Comptroller
Palm Beach County

www.mypalmbeachclerk.com



Negotiated Earnings Credit

Proposed 40 basis points: \$242,000

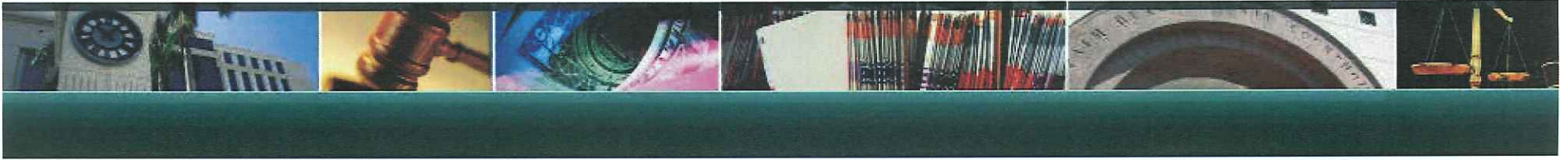
Negotiated 50 basis points: \$303,000

TAXPAYER SAVINGS \$61,000



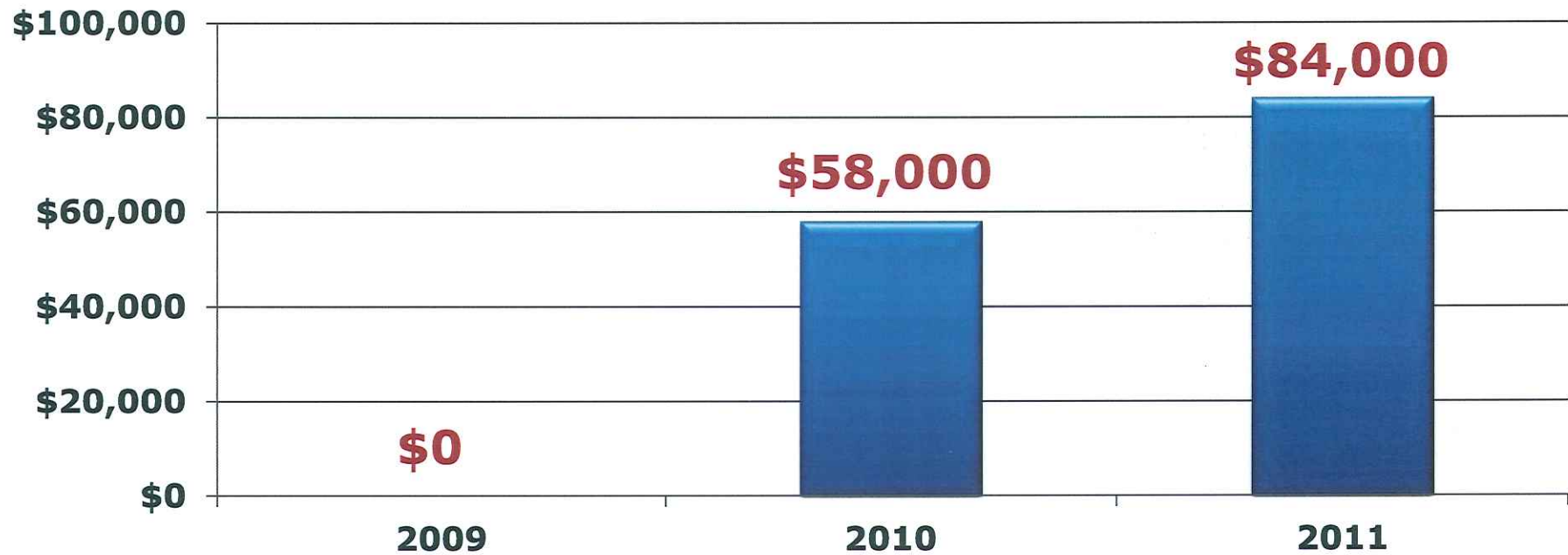
SHARON R. BOCK
Clerk & Comptroller
Palm Beach County

www.mypalmbeachclerk.com



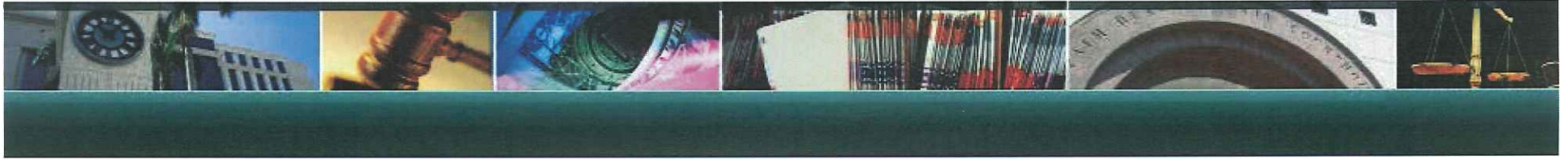
Transitioning of Clerk Merchant Services

Annual Benefit to the Board of County Commissioners



SHARON R. BOCK
Clerk & Comptroller
Palm Beach County

www.mypalmbeachclerk.com



Opportunities to Further Reduce Banking Costs

Example: "e-Payments"

Benefits:

- **Improve internal controls**
- **Reduce time from payment generation to receipt of funds**
- **Become more "green"**
- **Generate rebates!!**

\$200,000



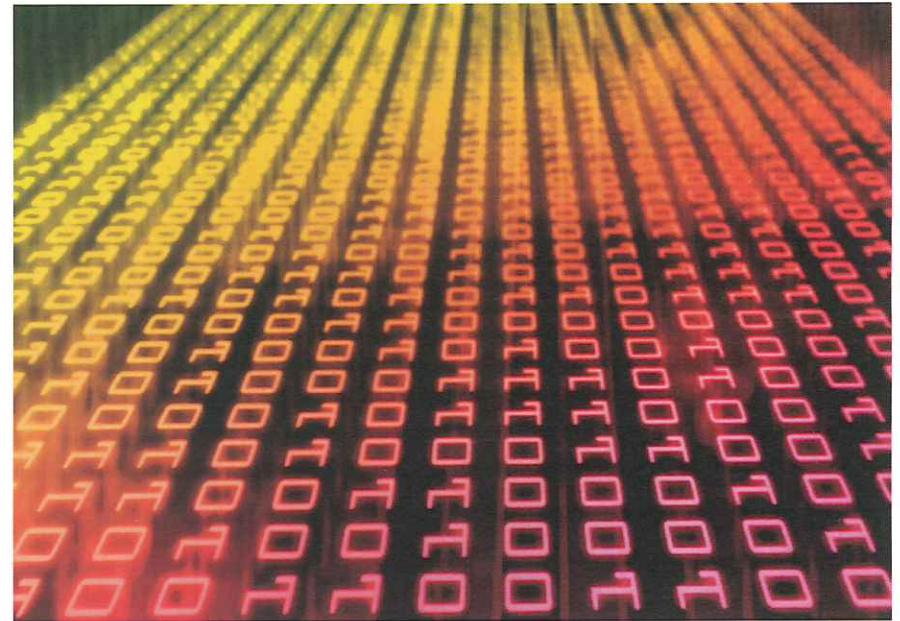
SHARON R. BOCK
Clerk & Comptroller
Palm Beach County

www.mypalmbeachclerk.com



Recommendations: Continued Use of Technology for Efficiencies

- **Payroll Pay cards**
- **Purchasing Cards**
- **Electronic Document Storage**



SHARON R. BOCK
Clerk & Comptroller
Palm Beach County

www.mypalmbeachclerk.com



SHARON R. BOCK
Clerk & Comptroller
Palm Beach County

QUESTIONS?

