



**Public Safety Department
Division of Emergency Management**

Disaster Preparedness: Storm Season Report



**Todd Bonlarron, Assistant County Administrator
Stephanie Sejnoha, Director Public Safety Department
Mary Blakeney, Director Division of Emergency Management
Rob Molleda, Meteorologist In Charge National Weather Service - Miami**

Agenda

- **Emergency Management Overview**
- **Core Hazards**
- **2023 Hurricane Season in Review and the 2024 Predictions**
- **Preparedness Cycle**
- **How You Can Help**



Division of Emergency Management



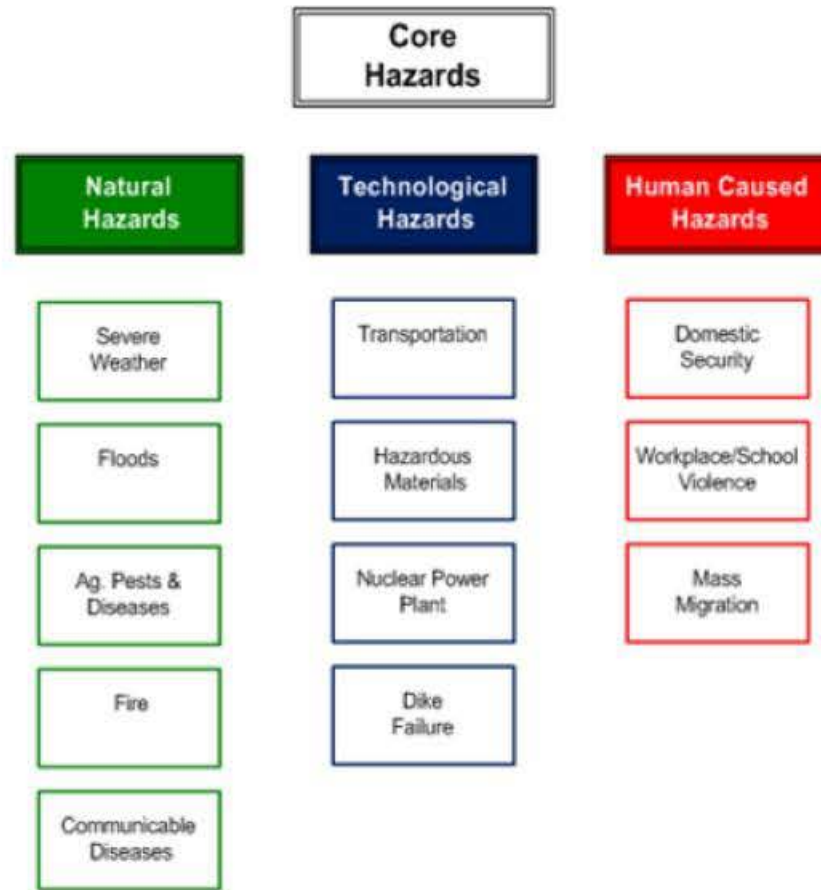
Our Vision

To be a world class emergency management agency keeping our community safe and resilient by working together with our partners and the public as a team.

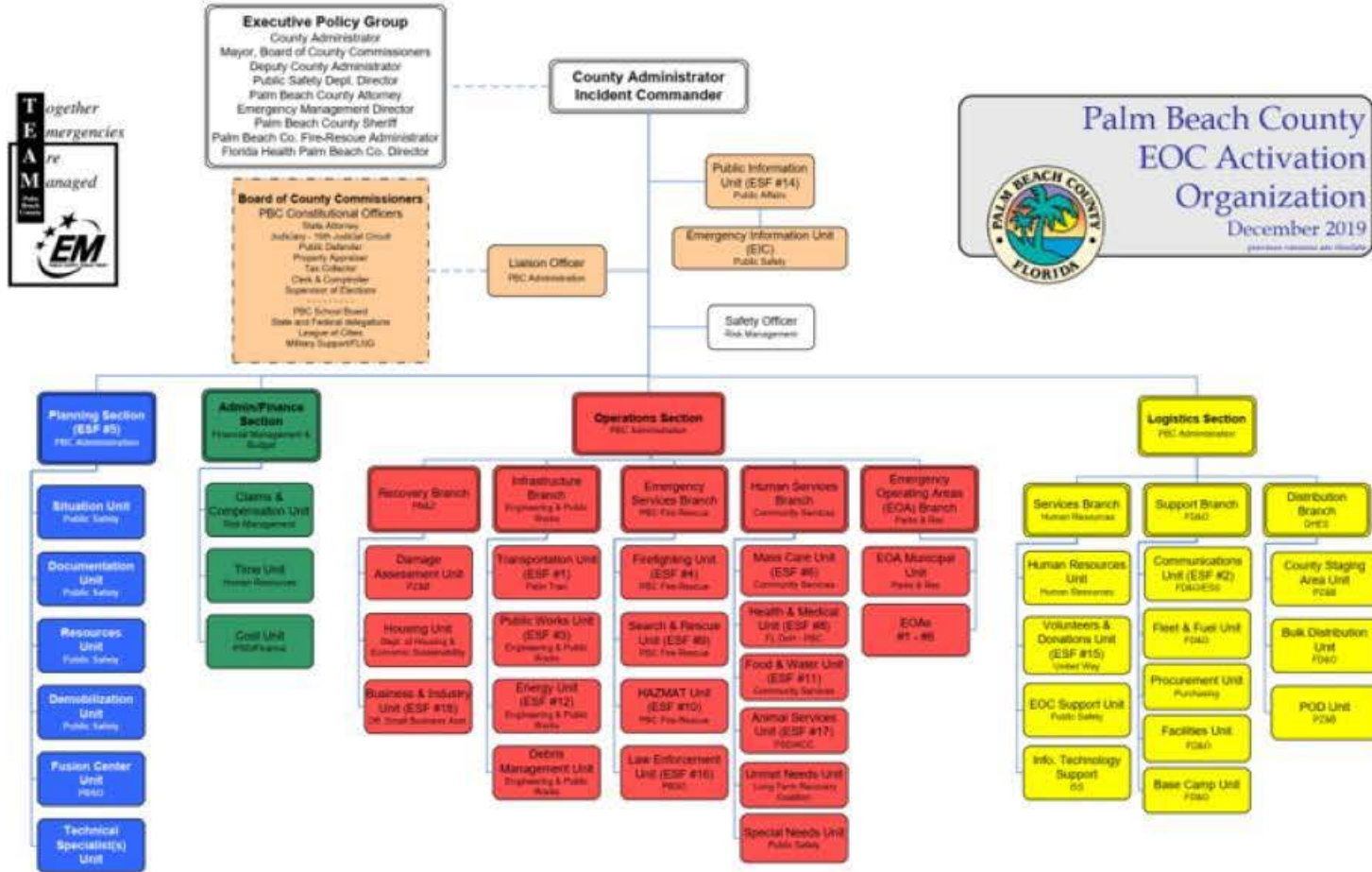


Public Safety Department
Division of
Emergency
Management

Our Hazards



Our TEAM

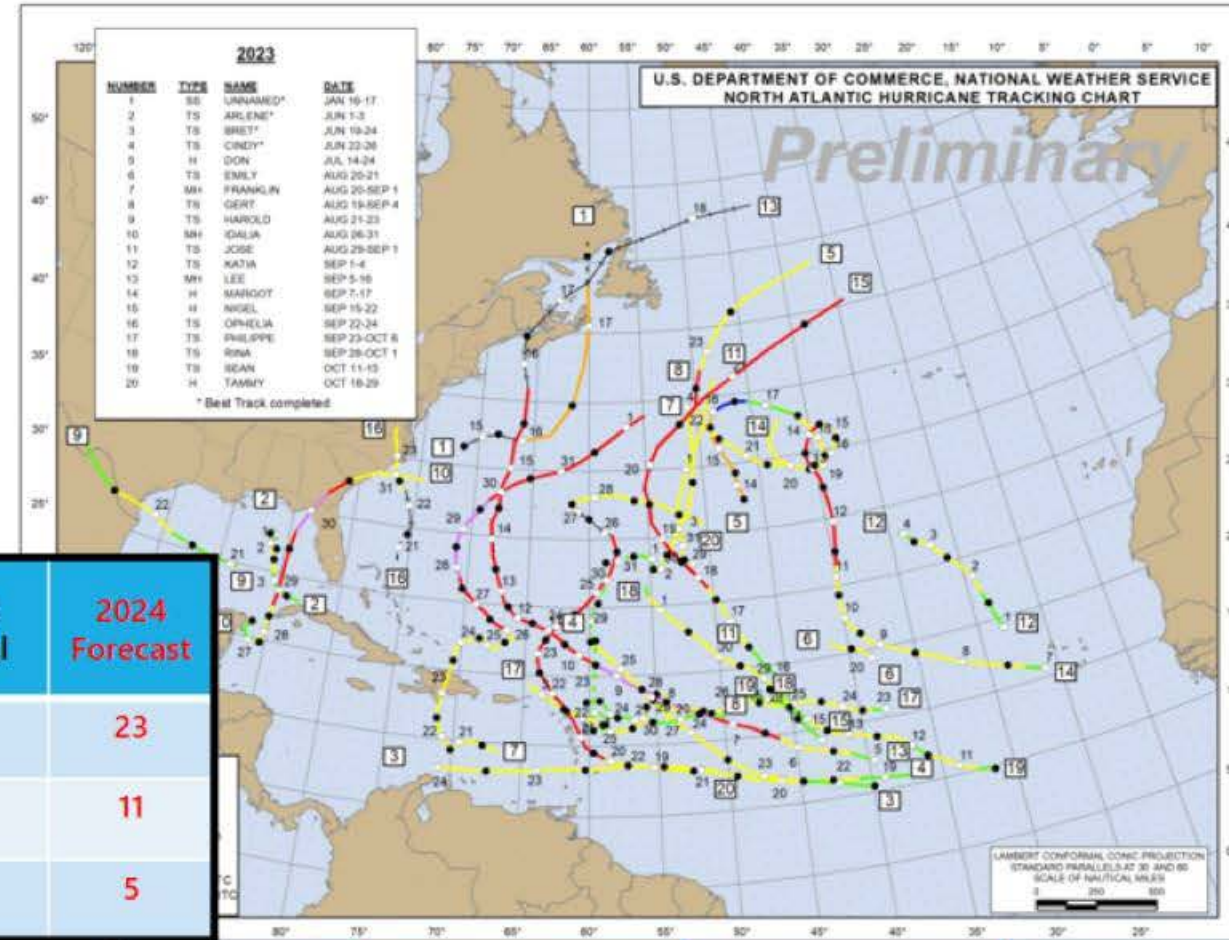


Public Safety Department
Division of
Emergency
Management

readypbc.com

2024 Atlantic Hurricane Season

- 2023 was forecasted to be near-normal year
- 2024 is forecasted to be an average to above average year



	Avg	2019 Actual	2020 Actual	2021 Actual	2022 Actual	2023 Actual	2024 Forecast
Named	14	18	30	21	14	20	23
Hurricanes	7	6	13	7	8	7	11
Intense (≥ Cat. 3)	3	3	6	4	2	3	5



Public Safety Department
Division of
Emergency
Management

readypsc.com

It continues to be busy

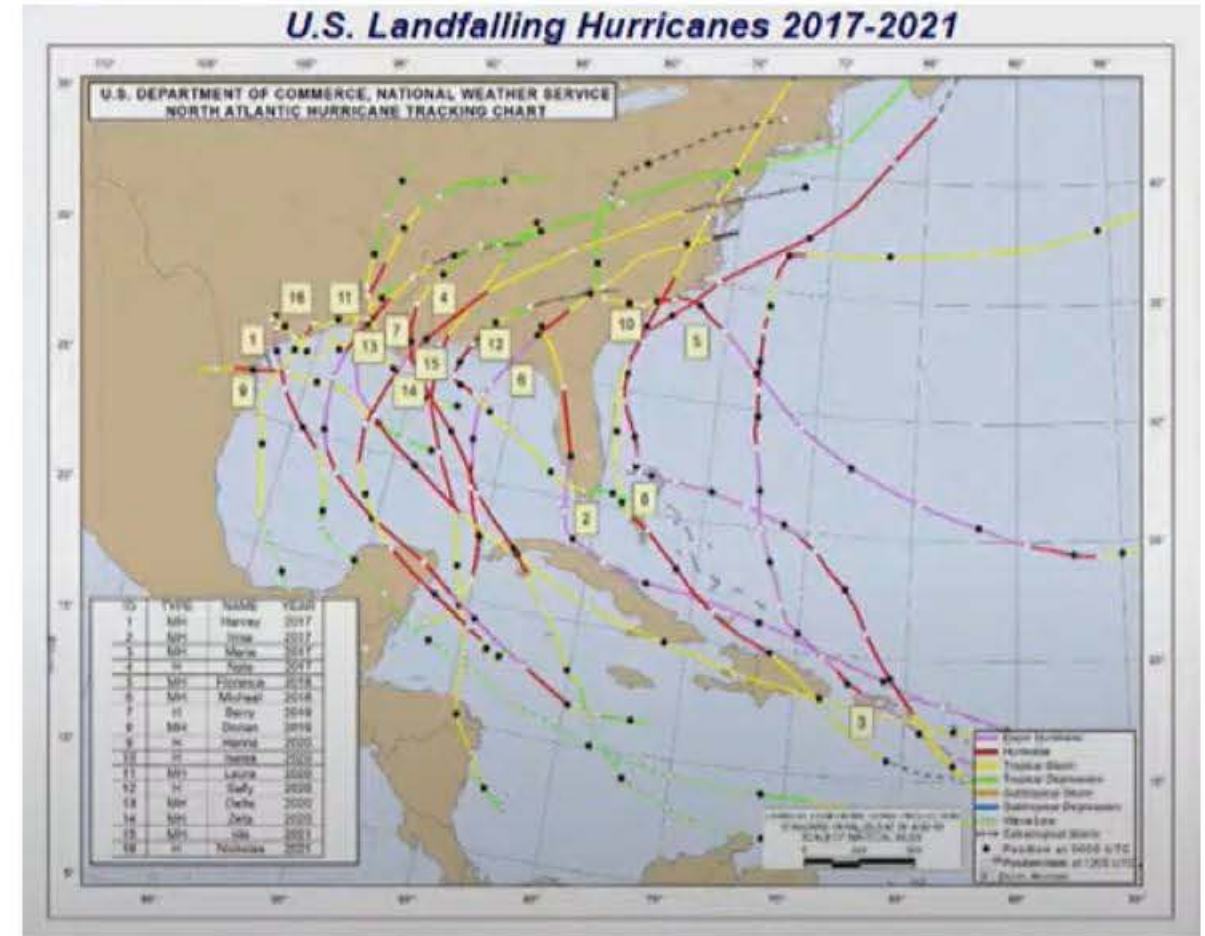


Public Safety Department
Division of
Emergency
Management



It continues to be busy

20 hurricanes have made landfall in the U.S. since 2017 (10 were major)



Public Safety Department
Division of
Emergency
Management

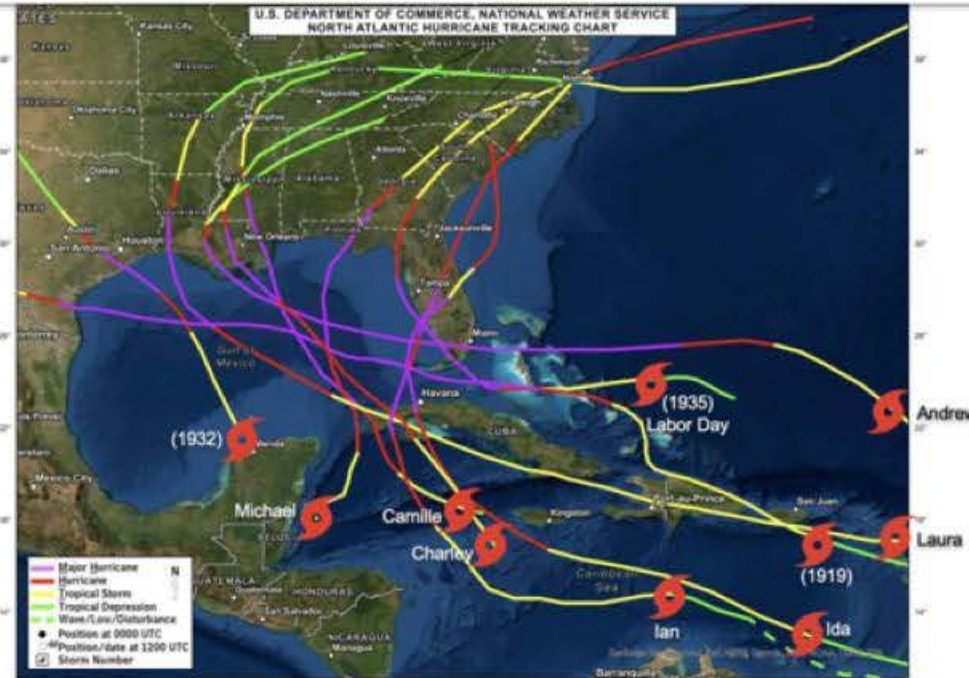
readypsc.com

Plan now!

Shorten Lead Times

The Nation's Strongest – 150 MPH or Greater
All But 1 Were Tropical Storms 3 Days Before Landfall

U.S. 150 mph+
1919 – Storm 2
1932 – Storm 2
1935 – Labor Day
1969 – Camille
1992 – Andrew
2004 – Charley
2018 – Michael
2020 – Laura
2021 – Ida
2022 – Ian



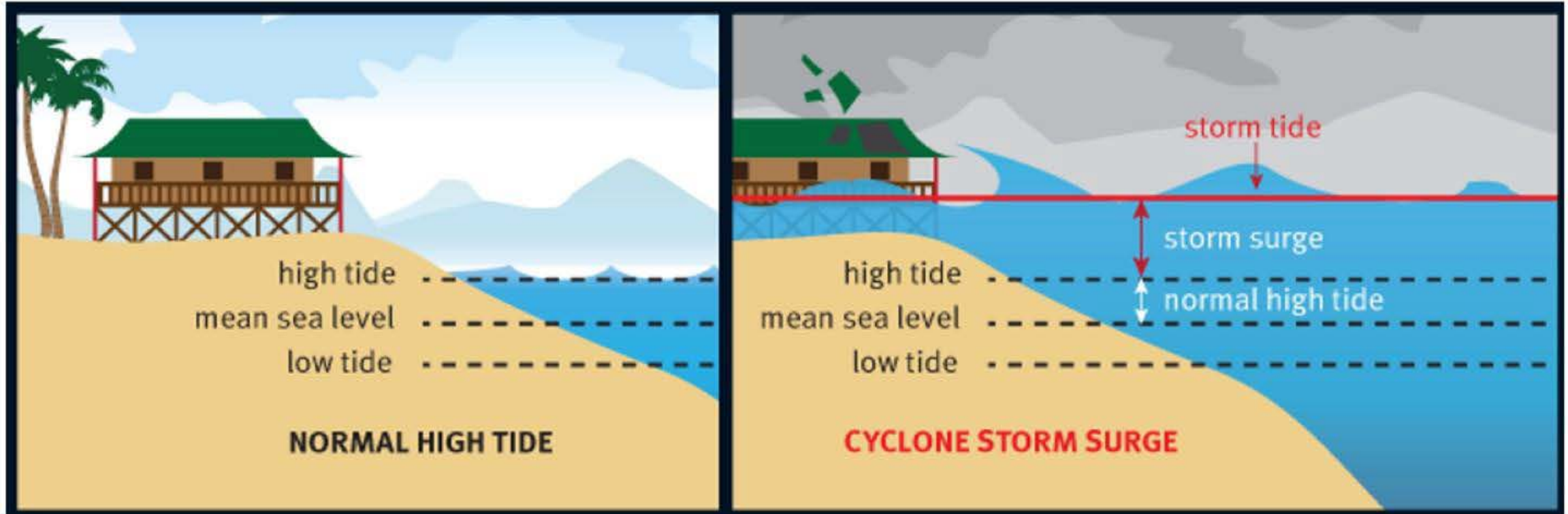
Average time to become a hurricane is **50 h** before landfall



Public Safety Department
Division of
Emergency
Management



What is Storm Surge?



Storm Surge Impact Visualization Messaging



Storm Surge Flooding Impacts

Storm Surge Flooding Impacts

9 out of 10 weather-related deaths in tropical cyclones are due to water

Flooding >1 Feet



- Localized inundation
- Water on near-shore roads
- Moderate beach erosion

Flooding >3 Feet



- Areas of inundation, enhanced by waves
- Some roads washed out, especially in vulnerable low spots
- Major beach erosion

Flooding >6 Feet



- Large areas of deep inundation with battering waves
- Roads washed out with severe flooding
- Structural damage to buildings, some washed away
- Severe beach erosion

Flooding >9 Feet



- Widespread deep inundation, with powerful battering waves
- Flood control systems and barriers may be stressed
- Structural damage to buildings with many washed away
- Extreme beach erosion

Hurricane — photos

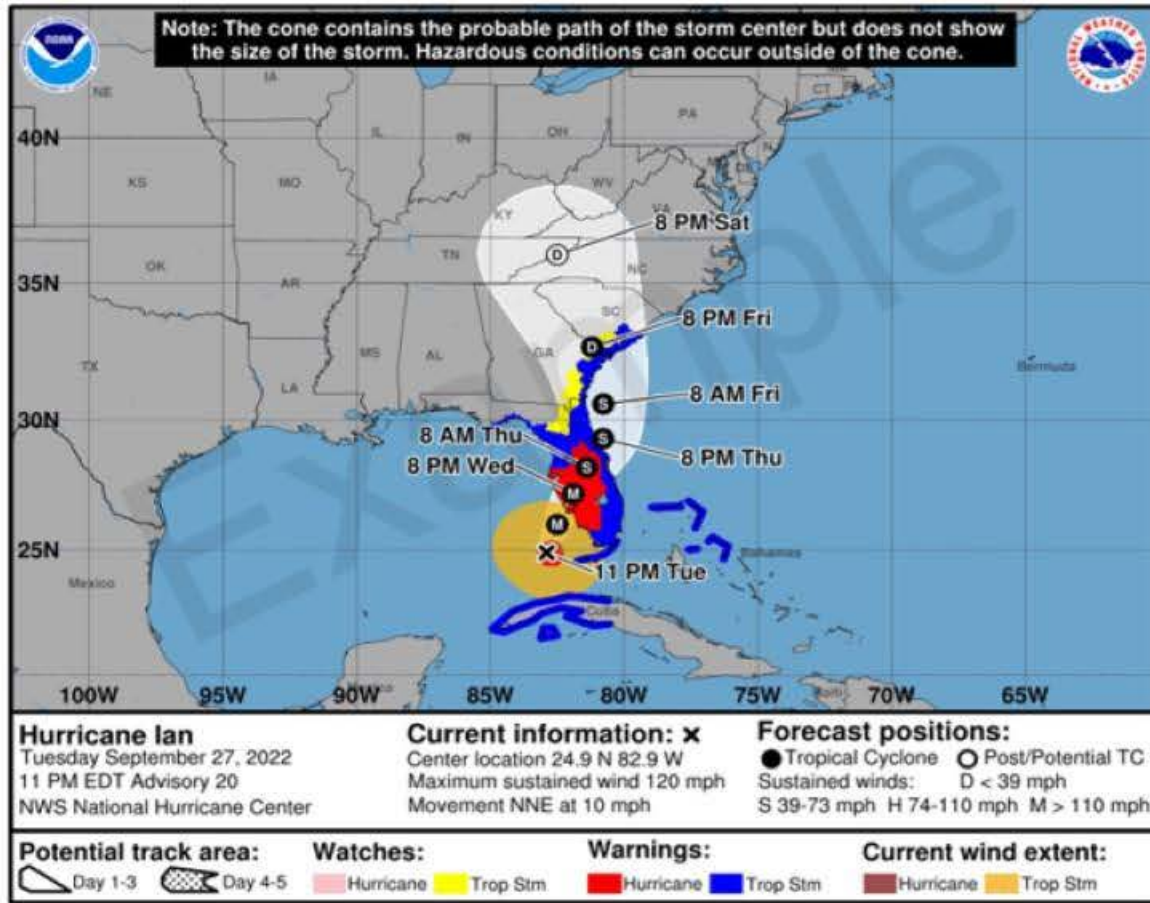
NWS WFO
Weather Forecast Office



Public Safety Department
Division of
Emergency
Management



Depicting Inland Watches/Warnings on Cone



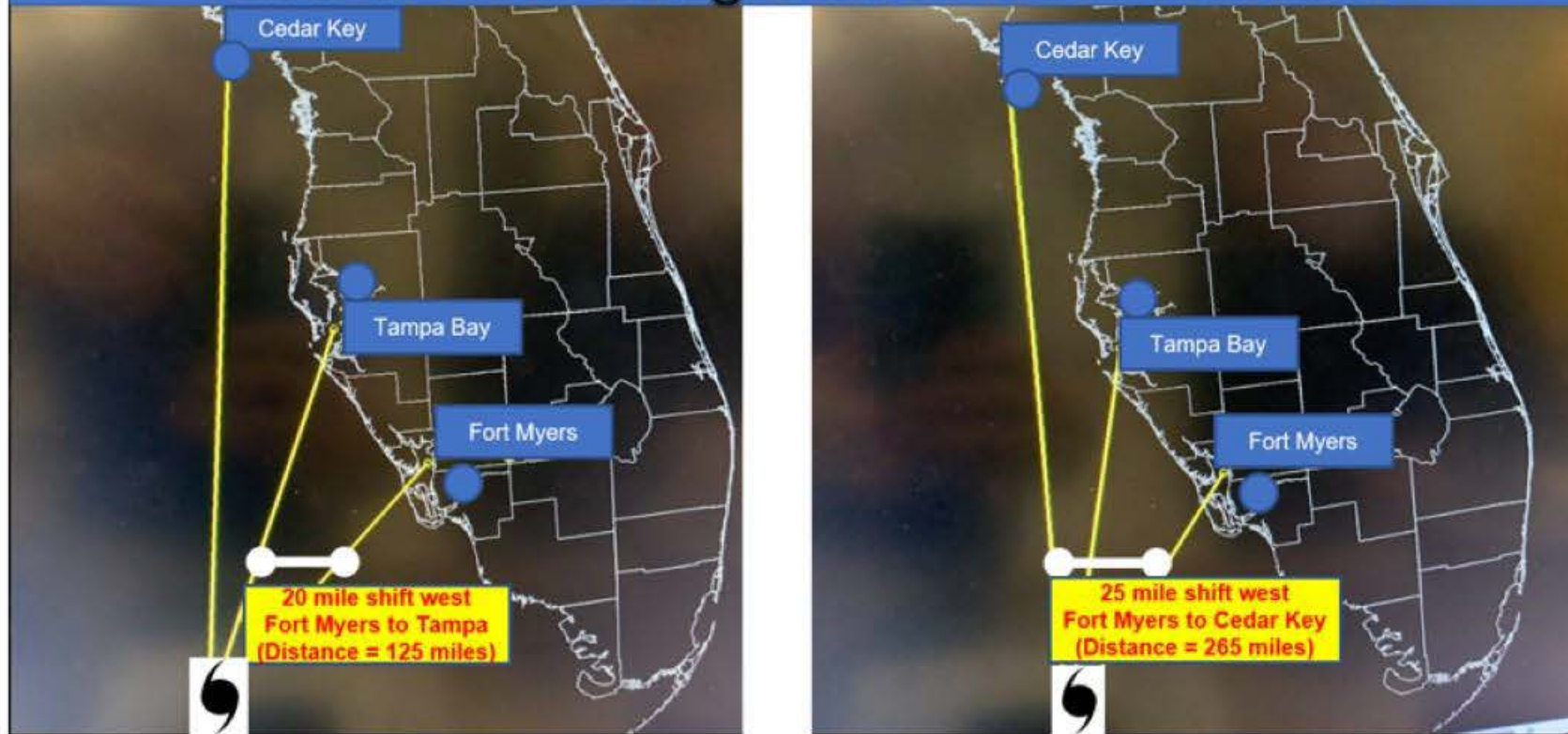
- New experimental cone graphic depicting inland U.S. tropical storm and hurricane watches and warnings will become available in 2024
- Will help convey wind hazard risk
- Graphic may not be available as soon as the current cone graphic due to the time need to compile complete inland watch and warning information
- Will be available beginning on or around August 15, 2024



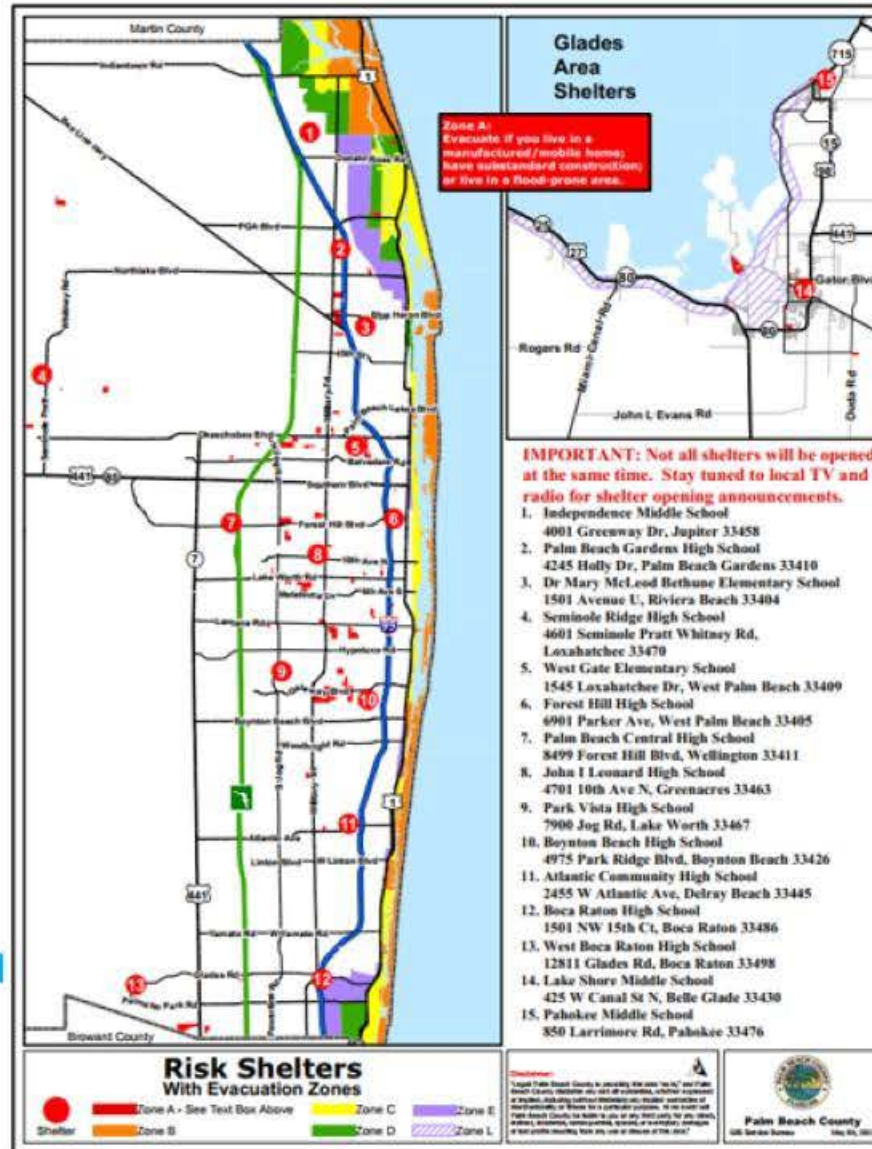
Public Safety Department
 Division of
 Emergency
 Management

Forecasts Change

When can 20 miles = 125 miles? (Fort Myers to Tampa) Shifts in Track along a north-south coastline

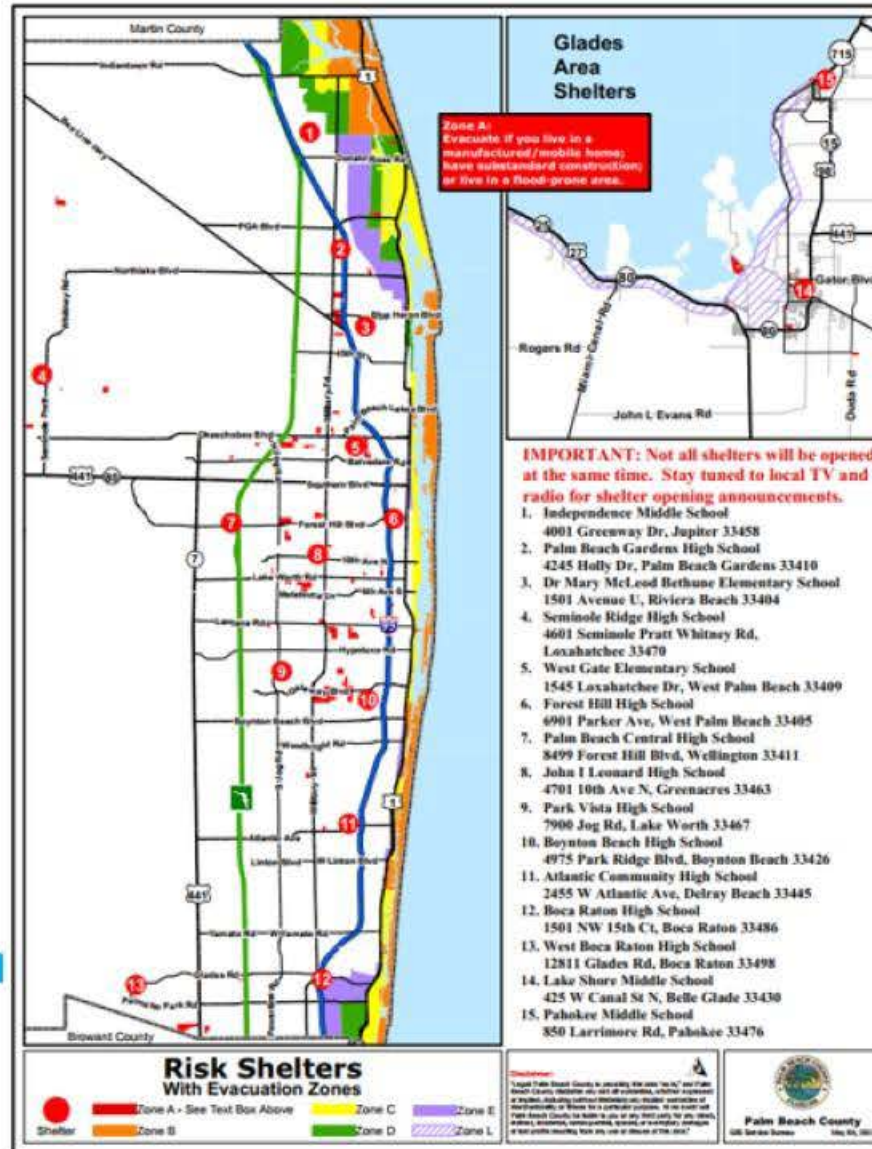


Hurricane Evacuation Zones



Public Safety Department
Division of
Emergency
Management

Hurricane Risk Shelters



Public Safety Department
Division of
Emergency
Management

Employee Disaster Response Program (EDRP)

Position	# of County Employees
Department Essential	4,014
EOC Essential	206
Emergency Information Center (EIC)	86
Disaster Service Agents	906
Disaster Team Leaders	66
Disaster Field Workers	109



Employee Disaster Response Program (EDRP)

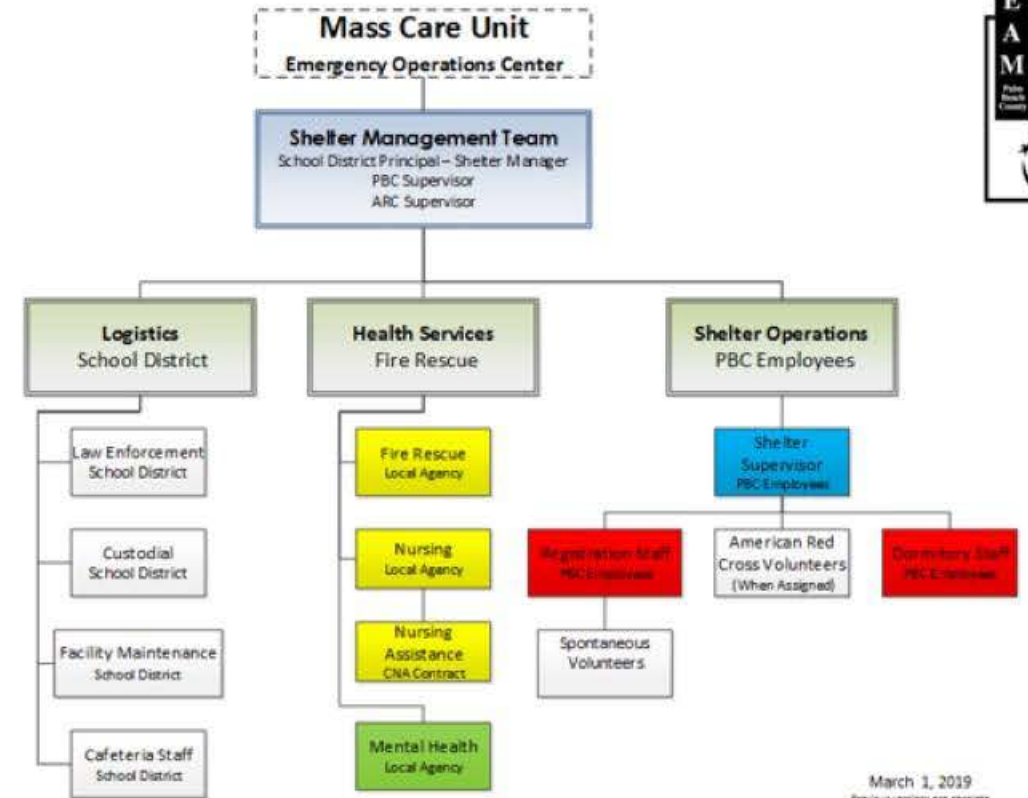


Public Safety Department
Division of
Emergency
Management



Shelter Staffing

Palm Beach County General Population Shelter Organizational Chart

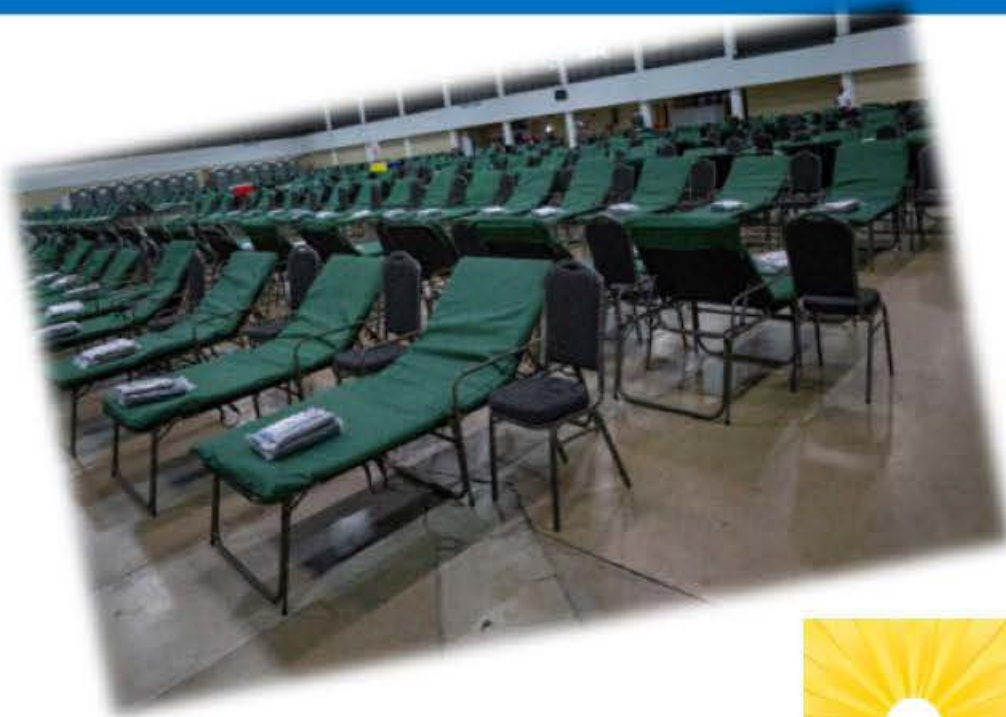


March 1, 2019
Previous versions are obsolete

Function/role	# of Employees Assigned
Shelter supervisors	61
Shelter support staff	543



Shelter Staffing



Public Safety Department
Division of
Emergency
Management



Training and Exercises



Public Safety Department
Division of
Emergency
Management



Disasters Don't Plan Ahead. **YOU CAN.**

- Encourage planning for disasters a priority for everyone; employees, residents, family & friends
- Encourage your businesses to be prepared
- Encourage your constituents to be prepared at every opportunity



Your four step approach to preparedness:



Make a Plan



- **Know Your Hazards**
- **Know Your Zones**
- **Have a Communication Plan**



Make a Plan

Pre-register for the
Special Needs Shelter
561-712-6400



Pre-register for the
Pet-Friendly Shelter Program
561-233-1200



Public Safety Department
Division of
Emergency
Management

Important **Documents** and **Special Items**

- ✓ Identification
- ✓ Medical Insurance Cards
- ✓ Home/Renters/Flood Insurance Policies
- ✓ Birth Certificates
- ✓ List of Medications
- ✓ Copy of legal documents
- ✓ Pictures and other Family Memorabilia
- ✓ Pictures of the house and property for insurance reasons



Build a Kit

Food Week 1

- 1 Gallon of water per person per day for at least 5 days, for drinking and sanitation
- Sandwich bread (*freeze until needed*)
- 3 Boxes of quick energy snacks (*i.e. granola bars or raisins*)
- 2 Cans of ready-to-eat-soup
- 1 Box of crackers
- Dry cereal
- 4 Cans of fruit
- 5 Cans of meat
- 4 Cans of vegetables
- 1 Jar of jelly or jam
- 1 Large can of juice
- Instant coffee/tea/powdered drinks



Water

Water will be needed for drinking, cooking, and bathing. Store enough bottled water for all members of your family and pets before the storm. Clean water that could be used for bathing & washing dishes is in your water heater.

Health & First Aid Week 3

- 1 Bottle of shampoo
- 1 Box sanitary hand wipes/liquid
- 1 Large tube of toothpaste
- Antiseptic
- Deodorant
- Tweezers
- Adhesive bandages, assorted sizes
- Rolls of gauze or bandages
- Hydrogen peroxide
- First Aid book
- First Aid tape
- Petroleum jelly
- Rubbing alcohol

First Aid



During a storm, phone and electrical lines go down. Dangerous weather conditions prevent emergency vehicles from responding to emergency situations. Preparing yourself and your family with CPR and First Aid training can save the life of a loved one.

Storage Week 2

- 2 Boxes of large plastic zip bags
- Plastic wrap
- 2 Rolls of aluminum foil
- Assorted plastic containers with lids
- 3 Boxes heavy-duty garbage bags
- Waterproof portable plastic container with lid

Preserving Food & Important Documents

Electrical power can be off for several days after a storm, so plan for power outages. Also, use waterproof containers to protect important papers.



Cleaning & Supplies Week 4

- 2 Packages of eating utensils, paper cups, paper plates
- Facial tissues (*i.e. Kleenex*)
- 2 Rolls of paper towels
- 4 Rolls of toilet paper
- Liquid dish soap
- Mosquito repellent
- Matches
- 2 Pairs of latex gloves
- Broom, mop, and bucket
- Unscented liquid bleach

Use What You Have

Stock up on personal care and cleaning items. Check your supplies now to make sure you have these supplies on hand. Don't forget disposable plates, cups and utensils, paper towels, and toilet paper. Insect repellent and sunscreen should be included. If you have an adequate supply on hand, you will not need to purchase them when you go shopping.



Palm Beach County
Public Safety Department
Emergency Management Division
www.pbcgov.org/dem



Palm Beach County
Board of County Commissioners

In accordance with the provisions of the ADA, this brochure can be made available in an alternate format. Contact Emergency Management at (561) 712-6400.

Rev. 06/12

TO DO LIST Before the Season Starts

- Make a family plan. Who does what and where will your family ride out the storm
- Locate your water meter and electrical shutoff
- Know the disaster plan of your child's school or daycare
- Trim trees and store loose objects
- Install/test your smoke detector
- Use a video camera to tape the contents of your home and store videotape with a friend who lives out of town
- Photocopy important papers and store safely
- Make plans to board your pet if you plan to go to a shelter
- Obtain cash or travelers checks
- Establish an out-of-state contact to call in case of emergency



Emergency Supply Kit Shopping List

Everyone needs to prepare for emergency situations, but shopping for supplies can be expensive and strenuous. Shopping for items a little at a time before an event, can reduce the stress of recovery by avoiding long lines and empty shelves.

Get a Head Start & Be Prepared!

Keep in a Waterproof Portable Container

- Will, insurance policies, contracts, deeds, stocks, and bonds
- Passports, social security cards, immunization records
- Bank account numbers
- Credit card account numbers and companies
- Inventory of valuable household goods, important telephone numbers
- Family records (*birth, marriage, death certificates*)



Save this
comprehensive list of
emergency kit supplies
created just for you!



Public Safety Department
Division of
Emergency
Management

readypbc.com

Help your NEIGHBORS before, during, and after a disaster.

HELP THEM PREPARE

Collect supplies for emergency kits. Help installing shutters. Help clean debris from yards.

HELP THEM EVACUATE

Do they know where the nearest shelters are? Do they have special medical needs and have they pre-registered for Special Needs Shelter?

HELP AFTER THE STORM

Check on neighbors after the storm. Help remove shutters. Share supplies and resources until help arrives.



Get Involved



For more
information:
561-712-6400
readypbc.com



Public Safety Department
Division of
Emergency
Management

readypbc.com



Be Informed

Our Website

www.ReadyPBC.com



- Hurricane Planning Guide
- Preparedness Information
- Know Your Zone
- Sheltering information and locations
- Volunteering
- And much more

Emergency Information Center
(EIC):

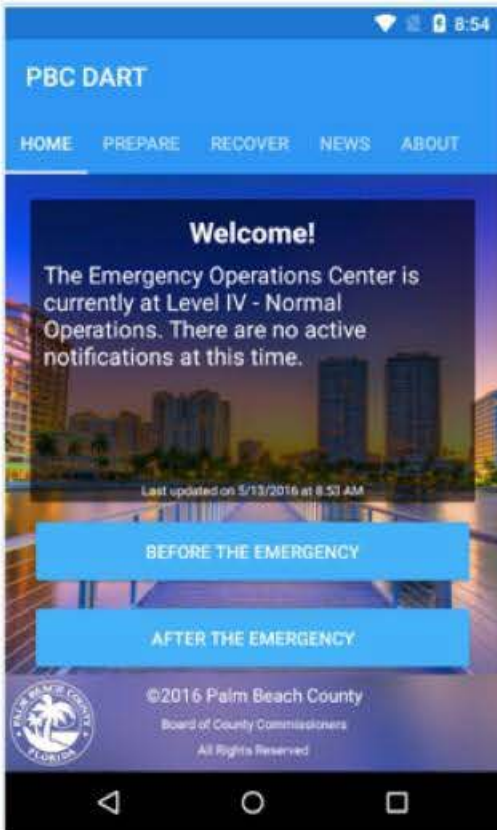
(561) 712-6400



Public Safety Department
Division of
Emergency
Management



Be Informed



Download PBC DART App!



Click and download app below:



Public Safety Department
Division of
Emergency
Management

Be Informed



ALERTPBC

Palm Beach County's
Emergency Notification System



Sign up at readypbc.com



Public Safety Department
Division of
Emergency
Management

Follow us!



@pbcDEM



@pbcDEM



@pbcDEM



Like



Love



How Can You Help



Public Safety Department
Division of
Emergency
Management



Understand Response Priorities

- **Priority 1:** Life saving/life safety & security
 - high hazard areas,
 - high-risk populations, and
 - search and rescue situations
- **Priority 2:** Establish communications
- **Priority 3:** Mission critical operations
 - Meet basic human needs
- **Priority 4:** Mission critical infrastructure
 - Open roads, schools, businesses
- **Priority 5:** Environmental hazard mitigation



Reinforce EOC actions & priorities:

Assist with federal declarations:

- Work with lawmakers to “turn on” FEMA programs
- Special requests for federal assistance
- Reimbursement support

Consistent messaging:

- Reinforce protective actions
- Reinforce public information





Thank you! Questions?



**Public Safety Department
Division of Emergency Management
Readyabc.com**