

PALM BEACH COUNTY
BOARD OF COUNTY COMMISSIONERS

WORKSHOP SUMMARY

Meeting Date: June 18, 2024
Submitted By: Administration
Submitted For: Community Services/Youth Services

I. EXECUTIVE BRIEF

Title: Nonprofit Agencies funded by the Board of County Commissioners (BCC)

Summary: The BCC directed staff to schedule a workshop regarding nonprofit agencies providing social services that are funded by Palm Beach County, and to allow the nonprofits to present the impact of the funding on the community. Several agencies funded through the Community Services Department's Financially Assisted Agencies (FAAs) and Youth Services' Department Community Based Agencies (CBAs) will present to during the workshop. Staff will also provide an overview of other funded agencies. Countywide (HH)

Background and Policy Issues: Since the early 1980s the BCC has provided funding to nonprofit agencies through the FAA program. The Fiscal Year (FY) 2024 budget for FAAs is \$14,179,980 and the FY 2024 Budget for CBAs is \$ 5,842,369. There are other nonprofit agencies receiving funding from the BCC; however, the largest investments are through the FAA and CBA programs. For both programs, a competitive process is utilized to recommend agencies. All contracts require reporting of outcomes which are captured in published annual reports. Both FAA and CBA programs are designed to address strategic priorities of the BCC such as Behavioral and Substance Use Disorders, Housing Development, Unsheltered Residents, Public Safety, and Economic Development. The FAA program is guided by the Health and Human Services Element of the Comprehensive Plan and input from the Citizens' Advisory Committee on Health and Human Services. The CBA program priorities are established in the Palm Beach County Youth Master Plan which was developed in partnership with the Birth to 22: United for Brighter Futures Alliance.

Attachments:

- 1. Power Point presentation
-
-

N/A

Recommended by: _____
Department Director Date

Approved By: _____
County Administration Date 6/14/24

II. FISCAL IMPACT ANALYSIS

A. Five Year Summary of Fiscal Impact:

Fiscal Years					
Capital Expenditures					
Operating Costs					
External Revenues					
Program Income(County)					
In-Kind Match(County)					
NET FISCAL IMPACT					
#ADDITIONAL FTE					
POSITIONS (CUMULATIVE)					

Is Item Included in Current Budget? Yes X No
 Does this item include the use of federal funds? Yes No X

Budget Account No:

Fund Dept Unit

B. Recommended Sources of Funds/Summary of Fiscal Impact:

C. Departmental Fiscal Review:

III. REVIEW COMMENTS:

A. OFMB Fiscal and/or Contract Dev. and Control Comments:

Sara Mente 6/12/24
 OFMB JA 6/12
 6/12

Brenda Gracht 6/12/24
 Contract Dev. & Control
 6/12/24

B. Legal Sufficiency

Debra Colby 6/14/24
 Assistant County Attorney

C. Other Department Review

 Department Director

(THIS SUMMARY IS NOT TO BE USED AS A BASIS FOR PAYMENT.)



**Nonprofit
Partners
funded by Palm
Beach County**





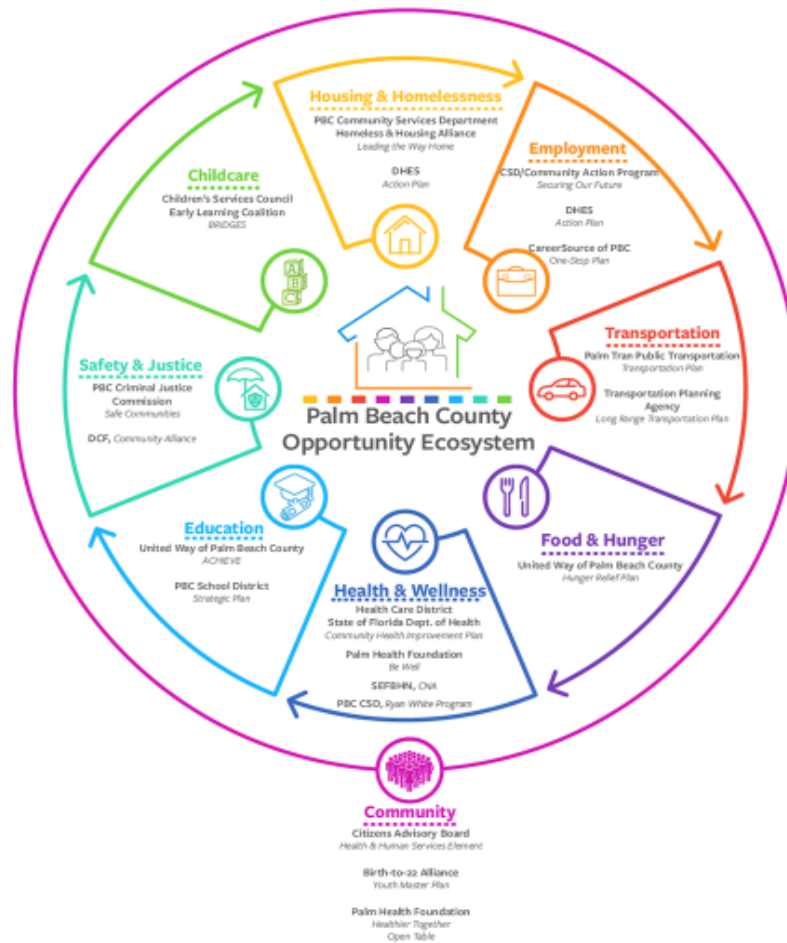
Overview

- Nonprofit partners serve a critical role in serving residents of Palm Beach County
- Focus of today's workshop will be on the Youth Services Department's Community Based Agencies (CBA) and Community Service Department's Financially Assisted Agencies (FAA)
- Several other departments contract with nonprofits such as Parks and Recreation, Public Safety, Office of Community Revitalization and Office of Equal Opportunity



#PBCGOV | pbc.gov

Palm Beach County Opportunity Ecosystem



HEALTH AND HUMAN SERVICES ELEMENT

Palm Beach County does not serve as the lead agency and is not primarily responsible for every domain.

The Element identifies the County's role in funding, providing and/or supporting the delivery of health and human services.

It also defines the County's relationship with other funders and providers of services for the purpose of maximizing the resources and benefits available to Palm Beach County residents.

Contracting with nonprofit organizations is a way to fill service gaps that are identified in the Health and Human Services System of Care.



#PBCGOV | pbc.gov



Community Based Agencies (CBA) Youth Services Department



Community Based Agencies Youth Services

- Total 2024 budget for CBAs - \$5,842,369
- Youth Empowerment Centers
- Categories of funding determined by the Youth Master Plan priorities
 - Economic Access
 - Educational Support
 - Ensuring Safety and Justice
 - Health and Wellness
 - Parenting and Role Models
 - Social and Emotional Learning



#PBCGOV | pbc.gov

Youth Empowerment Centers - \$528,776

- City of Riviera Beach – Riviera Beach Youth Empowerment Center - \$180,000
- For the Children, Inc. – Lake Worth Youth Empowerment Center - \$185,000
- Student ACES, Inc. – Belle Glade Youth Empowerment Center - \$180,000



[#PBCGOV | pbc.gov](https://www.pbc.gov)



FOR THE CHILDREN INC.

“A place where children come first.”



Healthy Families Healthy Kids

“HFHK”

The HFHK targets 60 families and works with the entire family in the following areas:

- ❖ Weekly sessions in nutrition, including gardening and healthy cooking demonstrations.
- ❖ Mental health and physical fitness. These include meditation, yoga, stress reduction, techniques, and other physical-related activities.
- ❖ Monthly parent and child interactive activities keep parents engaged in school and community activities, arts & crafts, painting, pottery, game night, field trips, and participation at local events.



Community Dinner



STEAM Night



Haitian Heritage Celebration

Ninety-nine percent (99%) of the parents reported that their participation in the HFHK helped them to better communicate with their children. HFHK offers an avenue for parents to support each other through school and community gathering activities and field trips.

Economic Access - \$324,000

- Florence Fuller Child Development Centers, Inc. - \$61,000
- Pace Center for Girls, Inc. - \$110,000
- Vita Nova, Inc. - \$153,000



#PBCGOV | pbc.gov

Educational Support - \$334,000

- The Arc of Palm Beach County - \$82,000
- Digital Vibez, Inc. - \$113,000
- Girl Scouts of Southeast Florida - \$112,000
- Scholar Career Coaching, Inc. - \$27,000



#PBCGOV | pbc.gov

Ensure Safety & Justice- \$1,435,508

- Aid to Victims of Domestic Abuse, Inc. - \$200,000
- Children's Case Management Organization, Inc., d/b/a Families First of Palm Beach County - \$129,000
- Children of Inmates, Incorporated - \$74,508
- Choice to Change, Inc. - \$80,000
- Communities in Schools of Palm Beach County, Inc. - \$70,000
- Community Child Care Center of Delray Beach, Inc., d/b/a Achievement Centers for Children and Families - \$112,000
- Gulfstream Goodwill Industries, Inc. - \$100,000
- United Way of Palm Beach County - \$670,000



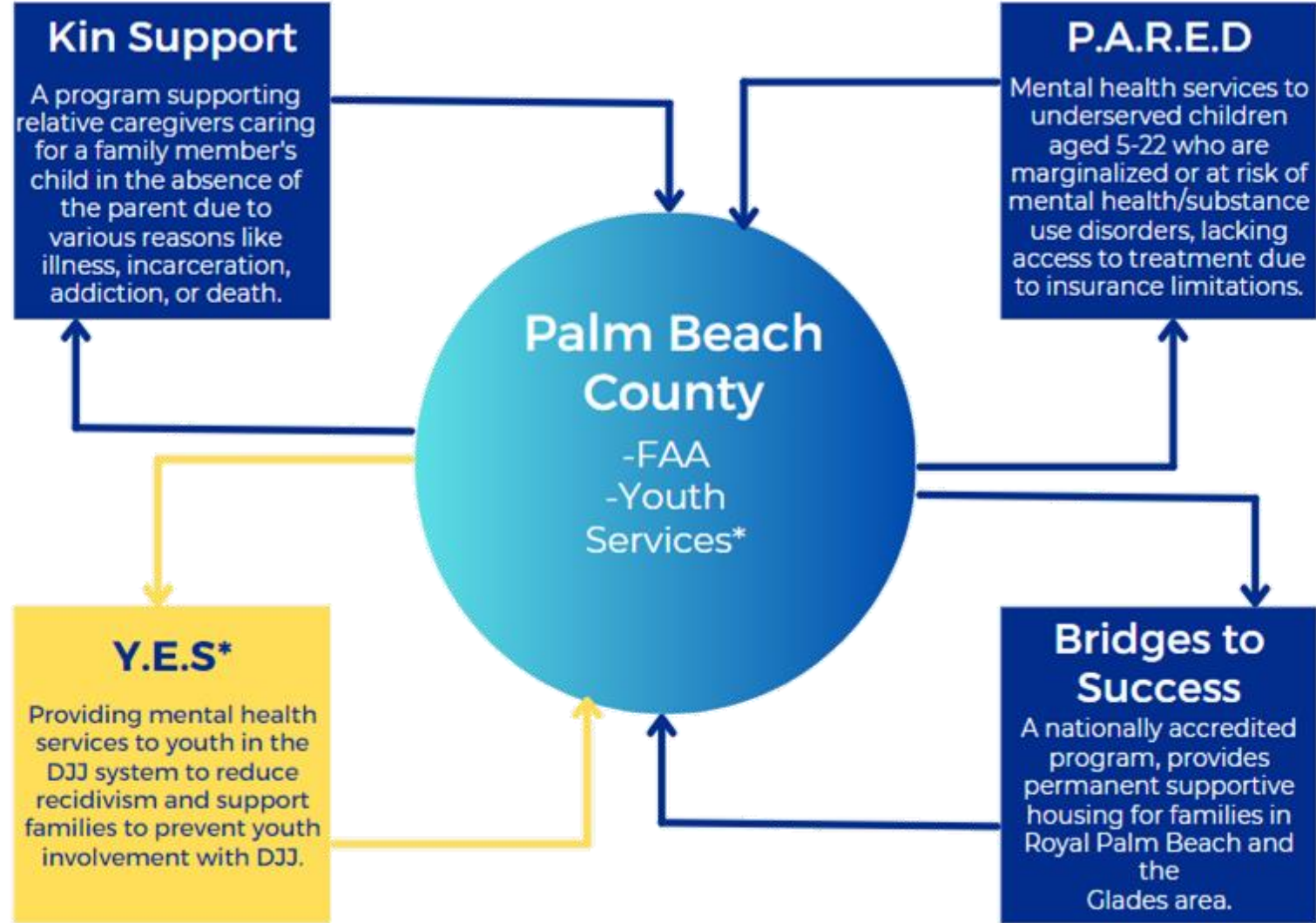
*Annual Budget



[#PBCGOV](#) | pbc.gov



Programs Funded



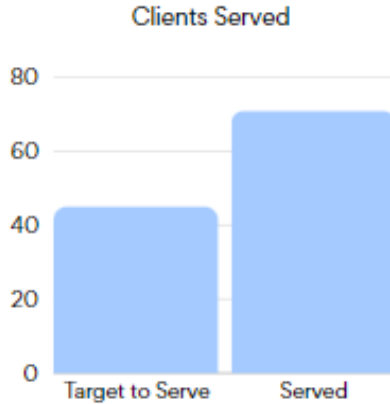


Empowering Change: How Your Funding Makes a Difference

SURVEY REPORT

Thank you BCC for your ongoing support for our Community Based services

P.A.R.E.D.: Participation, Access, Rights, Equity, Diversity



😊 Mental Health Improvement : **77%**

Kin Support

Percentage of families served that stayed strong and intact, with no children being removed or put into Foster care.



99%
Home Stability

Bridges to Success



Income Stability : **100%**

Did not return to homelessness : **100%**

Y.E.S.- Youth: Empowered and Secure

of Youth and their Families Served



Youth : 49/45

100% of Parents exceeded their target outcomes

One of these parents stopped by the office and expressed, "My son is making nice progress, and it looks like he is going to finally turn his life around".

Health & Wellness - \$716,000

- Center for Child Counseling - \$200,000
- Compass, Inc. - \$158,000
- Connections Education Center of the Palm Beaches - \$120,000
- Pace Center for Girls, Inc. - \$98,000
- For the Children - \$140,000



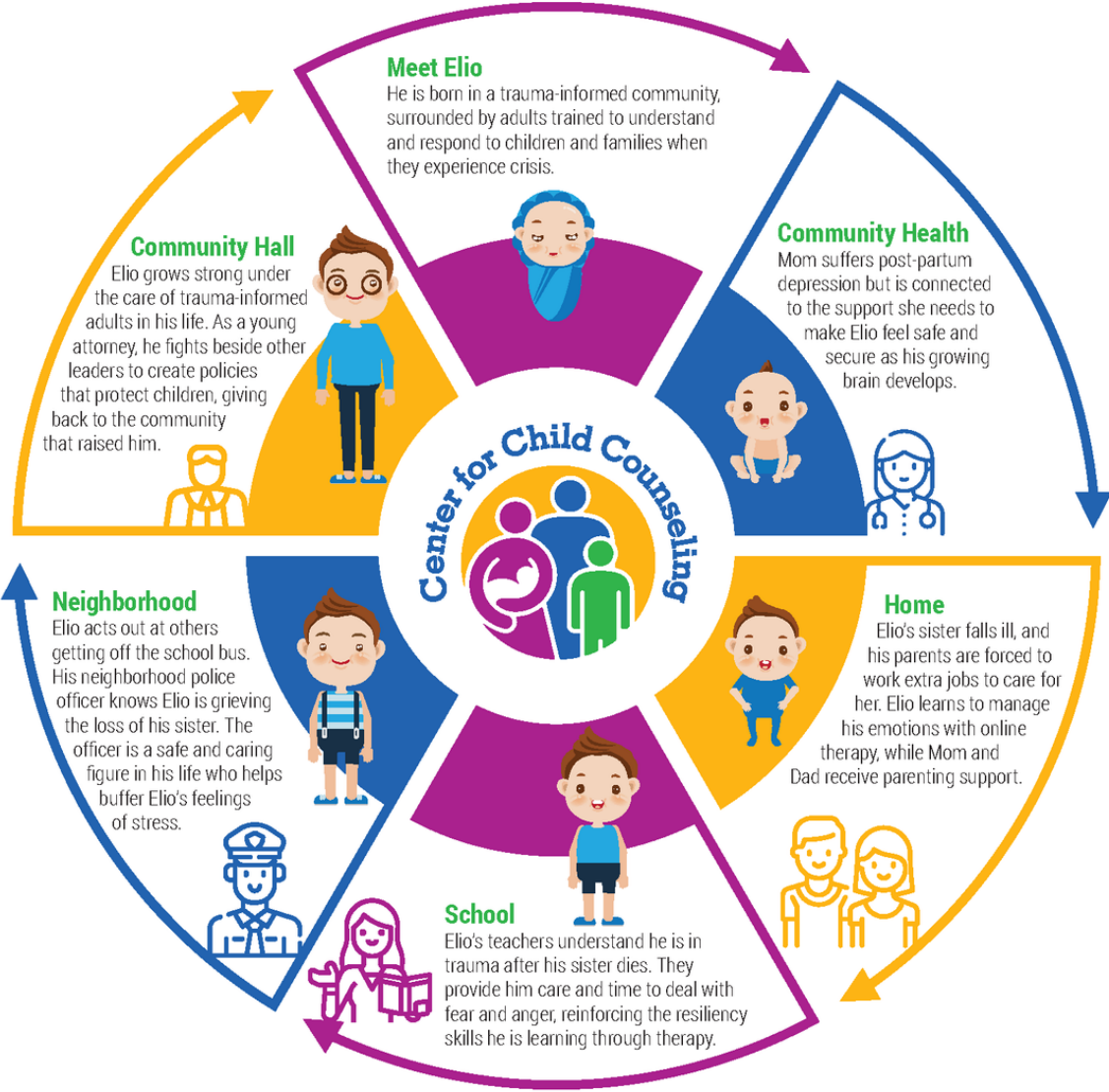
*Annual Funding



#PBCGOV | pbc.gov

Education and Prevention Services

Building Trauma-Informed Communities



OUR GOAL:

Create trauma-aware adults within our homes, schools, and communities who recognize and stop childhood trauma and abuse in its tracks, are part of the healing process, and ensure children grow healthy in mind and body.

DATA SNAPSHOT:

- 11,200 teachers, childcare care staff, mental health providers, parents, and other professionals received training in 2023.
- Of 1,829 clients screened for protective factors, 1,687 scored 7 or more.

Since 1999, Center for Child Counseling has been FIGHTING ACEs using a public health approach.



Pediatric Integration

Prevention, early intervention, and mental health treatment in partnership with Palm Beach Pediatrics.

In 2023:

220 Children received mental health treatment.

- 95% successfully completed services.

1 in 5 children will experience a mental health disorder at some point, with recent statistics showing rising rates of anxiety and depression in children and teenagers.

75% of children are seen in primary care settings and pediatricians are the trusted experts for much of a child's life. Additionally, they are often the first to see the impact of mental health and behavioral concerns.



Parenting & Role Models - \$535,000

- Children of Inmates, Incorporated - \$57,000
- Exchange Club/Dick Webber Center for the Prevention of Child Abuse for the Gold Coast, Inc. d/b/a The Children's Healing Institute - \$75,000
- Grandma's Place - \$146,000
- The Children's Home Society – Adoption Assistance Program - \$75,000
- The Children's Home Society – Visitation Center - \$130,000
- The Literacy Coalition of Palm Beach County - \$52,000



*Annual Budget



[#PBCGOV](https://www.pbc.gov) | [pbc.gov](https://www.pbc.gov)

Social & Emotional Learning - \$1,530,533

- American Association of Caregiving Youth, Inc. - \$75,000
- City of Greenacres - \$77,000
- Community Child Care Center of Delray Beach, Inc. d/b/a Achievement Centers for Children and Families - \$140,000
- Compass Inc. - \$100,000
- Housing Partnership, Inc. (Lake Worth) - \$50,000
- Housing Partnership, Inc. (Pahokee) - \$50,000
- Milagro Foundation, Inc. d/b/a Milagro Center - \$68,000
- The Urban League of Palm Beach County, Inc. - \$60,000
- Boys and Girls Clubs of Palm Beach County, Inc. - \$139,000
- Florence Fuller Child Development Centers, Inc – \$94,000
- The Path to College Foundation, Inc. - \$26,000
- Digital Vibez - \$171,428
- Prime Time After School Program (Middle School) - \$280,710
- Prime Time After School Program (Expanded Learning Opportunities – Summer Camp)- \$169,395



*Annual Budget



#PBCGOV | pbc.gov

2022-2023

Palm Beach County Youth Services Department Invests in the Future of Youth,
Out-of-School Time Programs and Practitioners Since 2016

A SYSTEM OF HIGH QUALITY



Youth
Afterschool & Summer
Camp Professionals



AFTERSCHOOL HANDS-ON LEARNING EXPERIENCES

Expert content providers delivered a total of 3,466 learning experiences.

SUMMER HANDS-ON LEARNING EXPERIENCES

Expert content providers offered 9,813 experiences with 1,498 youth impacted.

TEEN ADVISORY COUNCILS

80 teens from 19 OST programs, participated in Teen Advisory Council meetings.



PROFESSIONAL DEVELOPMENT

80+ practitioners attended Prime Time's middle school-focused trainings.

COACHING & SUPPORTS

Afterschool professionals at the 15 QIS middle school sites received 250 site supports.





Conclusion

Overall, we believe
and future generat

- Early experien
- Able to teach n
- Increase know
- around them
- Make connecti



Youth leaders at the Milagro Teen Center, a member of Prime Time's Teen Advisory Council, are engaged in a three-year process where they incorporated design thinking and collaboration to formulate the best way to make positive impact on their community. They were awarded \$10,000 to implement their ideas on workforce development for Palm Beach County youth.



**Financially Assisted Agencies
(FAA)
Community Services Department**



FAA SERVICE CATEGORIES

**FAA
SERVICE CATEGORIES
(Aligned with BCC
Priorities)**

**SUB-CATEGORIES
FOCUS**

Economic
Stability/Mobility

- Intellectual Development Disabilities/ Special Needs
- Seniors

Behavioral Health and
Substance Use Disorders

- Intellectual Development Disabilities/ Special Needs
- Seniors

Housing / Homelessness

- Domestic Violence
- Intellectual Development Disabilities/ Special Needs
- Seniors

Strategic Partnerships

- Behavioral Health & Substance Use Disorders
- Housing/Homelessness
- Economic Stability/Mobility



#PBCGOV | pbc.gov



FAA NOFO Strategies

FY2025-2027- FAA Housing & Homelessness Category

The total funding estimated to be available for Fiscal Year (FY) 2025 is \$2,598,262 for the five (5) Interventions/Subcategories, and will be distributed for each Subcategory as follows:

- **Homeless Prevention** – Families with at least one (1) adult and one (1) child under the age of 18, and/or Seniors, and/or persons with Intellectual Developmental Disorders (IDD) - **\$540,221**
- **Emergency Shelter** - Domestic Violence: Individuals (ages 18 and over) and Families with at least one (1) adult and one (1) child under the age of 18; or Parks to Work: Individuals (ages 18 and over) - **\$671,234**
- **Permanent Housing** (total a. RRH and b. PSH) - **\$1,195,093**
 - a. **Rapid Rehousing (RRH)** – Families with at least one (1) adult and one (1) child under the age of 18, and/or youth ages 18-24 - \$614,972
 - b. **Permanent Supportive Housing (PSH)** – Individuals (ages 25 and over), Families with at least one (1) adult and one (1) child under the age of 18 with a disability, and/ or youth ages 18-24 with a disability - \$580,121
- **Supportive Services Only** (total a. PSH CM and b. PSH EFCM) - **\$94,440**
 - a. **Permanent Supportive Housing (PSH) Case Management** - Individuals (ages 25 and over), Youth (ages 18-24), and/or Families with at least one (1) adult and one (1) child under the age of 18 with a disability, and/or youth ages 18-24 with a disability - \$49,000
 - b. **Permanent Supportive Housing (PSH) Employment Focused Case Management** - Individuals (ages 25 and over), Youth (ages 18-24), and/or Families with at least one (1) adult and one (1) child under the age of 18 with a disability, and/or youth ages 18-24 with a disability - \$45,440
- **Continuous Quality Improvement / Management** - **\$97,274** Agencies apply for up to 5% of the requested budget






FAA NOFO Strategies

FY2023-2025- FAA Economic Stability/Mobility Category

- The total funding estimated to be available for Fiscal Year (FY) 2023 is \$2,286,590 for the three (3) Strategies and the Subcategory under this Service Category. Funding will be distributed as followed:
- Economic Stability/Self Sufficiency: \$1,050,691
- Subcategory- Intellectual/Developmental Disabilities: \$1,235,899
- Continuous Quality Improvement Projects: Apply for up to 5% of the requested budget

FY2022-2024- FAA Behavioral Health Services

- The total funding estimated to be available for Fiscal Year (FY) 2022 is \$5,806,415 for the three (3) Strategies and the Subcategory under this Service Category. Funding will be distributed as follows:
- Behavioral Health: \$ 5,732,391
 - Strategy - Support Services
 - Strategy - Community-Based Treatment and Services
 - Strategy - Deep-End Treatment  Subcategory
- Special Needs: \$ 74,024



Homelessness

FAA Funding Allocation \$2,725,988.00

• Adopt a Family	Housing Stabilization	\$	143,040.00
• Adopt a Family	Project SAFE II	\$	111,968.00
• Adopt a Family	RRH at HRC	\$	131,950.00
• ADVA	Casa Vegso	\$	300,000.00
• ARC of PBC	Residential Program (special needs)	\$	253,134.00
• Children's Case Management	Bridges to Success	\$	49,000.00
• CILO	Senior Find	\$	44,047.00
• Family Promise North	Priority Housing Program	\$	305,000.00
• Gulfstream Goodwill	Employment Focused Case Management	\$	45,440.00
• Gulfstream Goodwill	Senior Homeless Prevention	\$	100,000.00
• Gulfstream Goodwill	Youth RRH	\$	178,022.00
• The Lord's Place	Parks To Work	\$	475,000.00
• The Lord's Place	PSH	\$	307,438.00
• Vita Nova	PSH	\$	160,715.00
• YWCA	Harmony House (DV)	\$	121,234.00





ADOPT-A-FAMILY

OF THE PALM BEACHES, INC.

Providing housing, case management, and supportive services for Palm Beach County families with minor children:

Intervention: Ending episodes of family homelessness.

Prevention: Responding with short-term rental assistance to keep in-crisis families from being evicted.

Brick-and-mortar Housing: 112 units of supportive, affordable family housing in Lake Worth.

Education: Youth programming for students from K-12, geared to address lasting impacts of childhood homelessness.



The mission of Adopt-A-Family is to strengthen families with children in their efforts to achieve stability and self-sufficiency by providing access to all-encompassing services.



ADOPT-A-FAMILY
of the Palm Beaches, Inc.

ADOPT-A-FAMILY

OF THE PALM BEACHES, INC.

Palm Beach County Community Services Department funds a range of agency programming:

Senator Philip D. Lewis Homeless Resource Center	Program REACH Emergency Shelter	Project SAFE II Permanent Supportive Housing	Housing Stabilization Program
Day-to-day operations of the family division of the HRC as well as specific homeless intervention services - \$2,121,803	Daily administration of 19 units of interim housing for families experiencing literal homelessness - \$413,951	32 units of supportive housing owned by AAF plus intensive case management for homeless families with disabilities - \$111,968	Short-term financial assistance provided to prevent evictions, ensuring families with children remain stably housed - \$143,040
Each year, AAF leverages more than \$3.4 million through grant writing, fundraising, and contributions to operate the above programming.			



The Lord's Place

Breaking the cycle of homelessness by providing innovative, compassionate and effective services to men, women, and children in our community.

Housing

- Funding: \$404,000
- Programs:
 - Operation Home Ready - 47 adults
 - Project Family Care - 24 families
 - Joshua House - 15 adult men
- Impact
 - 109 households served
 - 94% stably housed
 - 77% 1-year return avoidance

Street Outreach

- Funding: \$308,000
- Services:
 - Housing Navigation & Placement
 - Essential Needs (food, ids, etc.)
 - Resource & Service Referral
- Impact
 - 761 engaged
 - 520 connected to resources
 - 350 placed in housing

Job Training

- Funding: \$215,000
- Services:
 - Job Skills Instruction
 - Job Coaching & Placement
 - Job Training
- Impact
 - 173 coached
 - 75 increased skills
 - 40 employed

Parks 2 Work

- Funding: \$250,000
- Services:
 - Street Outreach & Engagement
 - Café Joshua Culinary Training
 - Essential Wraparound Services
- Impact
 - 21 chef apprentices trained
 - 1,000 meals per week
 - \$59,000 stipends earned

The Lord's Place

Breaking the cycle of homelessness by providing innovative, compassionate and effective services to men, women, and children in our community.



IMPACT:

- Matching
- Leveraging
- Sustainability
- Community Needs Alignment
- Collaboration
- Continuous Quality Improvement

Mission

**Eliminate Racism, Empower Women, and
Promote Peace, Justice, Freedom, and Dignity For All**

- **Affordable Housing**
- **Affordable Childcare /Early Education Programs**
- **Affordable Healthcare**
- **Women's Rights, Equal Pay & Gender Equity**
- **Domestic Violence | Emergency Housing | Rapid Re-Housing**
- **Child Development Center**
- **Women's Health Institute**
- **Racial Justice & Gender Equity**

Domestic Violence Services

Harmony House Emergency Shelter

- 24 hour hotline
- Basic needs
- Case Management
- Economic empowerment
- Legal assistance
- Healthcare
- Moral Support &
Encouragement



eliminating racism
empowering women

ywca

Palm Beach County

YWCA IS ON A MISSION

Strategic Partnerships

FAA Funding Allocation \$1,846,054.00

211 Palm Beach/Treasure Coast, Inc.	211Palm Beach/Treasure Coast Helpline	\$	177,457.00
211 Palm Beach/Treasure Coast, Inc.	Elder Crisis Outreach	\$	44,403.00
Adopt a Family	Traveler's Aid	\$	15,000.00
Gulfstream Goodwill	Traveler's Aid	\$	25,000.00
Legal Aid	Guardian Advocacy	\$	92,245.00
Mae Volen	Match Funds and Transportation	\$	1,194,135.00
Palm Beach Food Bank	Partner Marketplace/SNAP benefits	\$	155,295.00
SEFBHN	Wrap around services training for BH	\$	57,619.00
United Way	Hunger Relief	\$	45,000.00
United Way	VITA	\$	39,900.00



Here to Help



Palm Beach and

- ▶ Answering 211 - 988 - Victim Services
- ▶ Accredited - Certified - Trained staff **TOP HELP**
- ▶ Call - Text - Chat - Email
- ▶ 24/7 - 365
- ▶ Confidential - Compassionate - Free
- ▶ Connection to Services
- ▶ Online Resource Directory
- ▶ Advocacy Programs:
 - Youth - Elders - Veterans
- ▶ Crisis De-escalation & Suicide Prevention
- ▶ Dispatch Mobile Response Teams



HELP. STARTS. HERE.

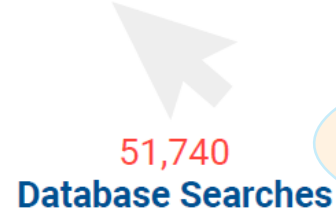
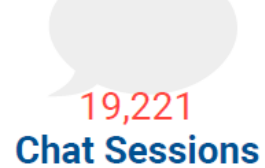
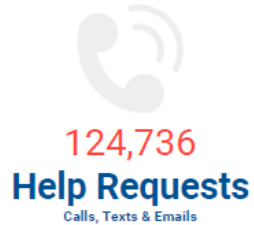
Program Performance



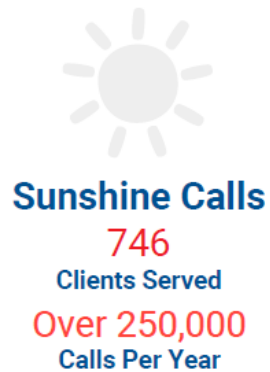
**Palm Beach and
Treasure Coast**

*“The kids tease me
at school.”*

Last year the 211 team responded to



*“I don’t have food in
my house for my two
children.”*



*“I’m so tired, I don’t
want to go on.”*

HELP. STARTS. HERE.



Legal Aid Society of Palm Beach County, Inc.

- **Guardian Advocacy Project funding: \$92,245 per year**

Since 2010, the Legal Aid Society's Guardian Advocacy Project (GAP) has been providing guardianship and legal case management services for two currently underserved populations: 1) youth, age 18-24, who have recently aged out or are currently aging out of foster care and who are designated as developmentally disabled and/or have special needs; and 2) individuals over the age of 25 have been diagnosed with a developmental disability or have been adjudicated incapacitated and are without family or friends to care for or assist them, including those who have been deserted by or lost their caregivers through death, age, or disability. Specifically, those qualified for the project have one or more of the following special needs, developmental disabilities or are at-risk of developing the disability: cerebral palsy, autism, mental retardation, spina bifida, or Prader-Willi Syndrome. All clients were diagnosed with a developmental disability before the age of 18. GAP staff provide the legal representation, advocacy, and support services necessary to help these individuals achieve their personal goals and maximize their independence in the least restrictive, home-based community setting. In 2023, the Guardian Advocacy Project assisted 22 clients.

- **Ryan White Project funding: \$305,081 per year**

In 1986, Legal Aid began providing advocacy services to HIV/AIDS infected individuals with funding from local Palm Beach County agencies, and since January 1994 Legal Aid has been providing services through Ryan White Title I Formula funds and Ryan White Supplemental funds. The Legal Aid Society's Ryan White Project addresses legal barriers that clients face in accessing appropriate health care as they progress along the continuum of care, with the ultimate goals of clients staying healthy, living longer, remaining independent and reducing their chances of passing HIV to others. The project assists clients in obtaining Social Security benefits, Medicaid, Medicare, and enables clients to access and maintain private insurance, remain employed, return to work, obtain lawful status, and complete medical planning through advance directives, e.g., health care surrogate, living wills and power of attorney. In addition, the project addresses cases of discrimination in order to keep clients employed and eligible for critical employee benefits such as health and dental insurance, long and short term disability allowances, and retirement plans. In 2023, Ryan White Project staff assisted 314 clients with 375 legal cases.



Legal Aid Society of Palm Beach County, Inc.

- **Rapid Response Eviction Assistance Project (RREAP) funding: \$275,000 per year**

Since 2020, the Legal Aid Society's Rapid Response Eviction Assistance Project (RREAP) has been providing legal advice and representation to tenants facing eviction. RREAP was developed in response to the COVID-19 pandemic to provide tenants with an opportunity to resolve landlord-tenant disputes regarding non-payment of rent with mediation, settlement agreements, litigation defense, and by educating tenants about their rights under Florida law. The project assists tenants with advice and counsel through a dedicated hotline and by providing pro se assistance to help tenants prepare a response to the eviction if full representation is not possible. RREAP staff are trained by the Community Services Department to assist tenants with rental assistance applications. The goal of RREAP is to prevent homelessness in Palm Beach County. In 2023, RREAP staff assisted 475 clients.

Economic Stability/Mobility-IDD FAA Funding Allocation-\$1,235,899.00

• ARC of PBC	Adult Education Program	\$	400,050.00
• ARC of PBC	STARS	\$	225,750.00
• ARC of PBC	Supported Employment	\$	120,750.00
• ARC of PBC	Supported Living	\$	82,950.00
• ARC of PBC	Technology Training	\$	84,000.00
• ARC of the Glades	Adult Developmental Services System of Care	\$	210,000.00
• CILO	FIND	\$	78,750.00
• CILO	LEAP	\$	99,750.00
• CILO	SAIL	\$	210,940.00
• Hab Center for Handicapped	Adult Day Program	\$	198,283.00
• Hab Center for Handicapped	Life skills Training and Supported Employment	\$	70,350.00



County-Supported Program 2023-2025	Unit Cost	One Year
Adult Education + CQM	\$33.75	\$400,050
STARS - Seniors in Transition & Retirement Services + CQM	\$53.91	\$225,750
Supported Employment + CQM	\$38.24	\$120,750
Supported Living + CQM	\$32.08	\$82,950
Technology Training + CQM	\$25.00	\$84,000
Residential Group Homes 2022-2024	\$33.53	\$253,134



**Building Stronger Systems
of Care for Children and
Adults with Disabilities in
Palm Beach County**

Merged since November 2021

**Pamela Payne President
and CEO Pamela Payne
President and CEO
(561) 842-3213
ppayne@arcpbc.org**

George participates in the Supported Employment Program at The Arc. *Super George*, as he is affectionately known around campus, has worked on the maintenance team for over ten years. He recently increased his working hours and is always excited and willing to learn more skills. George lives with his roommate and regularly meets with a case manager and a vocational coach. He enjoys spending his days off socializing at Dunkin Donuts, visiting the beach with his family, attending Church, and writing poetry. George is in the process of publishing his second book called *Poetry in Motion*. With your support, we equip adults with disabilities like George to be successful in the workforce and community.



**George:
Author & Poet**

Economic Stability/Mobility- Economic Stability/Self- Sufficiency FAA Funding Allocation \$1,050,691.00

• El Sol	Worker Development Project	\$	57,750.00
• Farmworker Coordinating Council	Family Preservation & Economic Stabilization	\$	176,400.00
• GBDC Entrepreneurship Institute, Inc.	Mobile Outreach Services	\$	75,000.00
• Gulfstream Goodwill	Work-Ability	\$	194,872.00
• Housing Partnership	Financial Stability & Building Prosperity	\$	212,314.00
• Palm Beach County Food Bank	Partner Market - Food Distribution	\$	1,107,968.00
• Pathways to Prosperity	CIRCLES	\$	73,500.00
• The Glades Initiative	Connecting the Glades	\$	157,500.00
• Vita Nova	The Spot - Pathways to Employment	\$	94,500.00



Last year our Community Resource Educators (Navigators) connected over 3,850 residents to services, valuing over \$11 million

Social Determinants of Health

Language and Literacy Skills

Access to Nutritious Food

Safe Housing & Neighborhoods

Transportation

Clean Air and Water
Job opportunities

Racism, Discrimination
And Violence



95% OF OUR CHILDREN IN PUBLIC SCHOOLS ARE ON FREE AND REDUCED LUNCH

The Glades Initiative

Access to Care: Connection to Services Navigation



- We assisted **3,001 residents** with applications for services through DCF, such as SNAP, Medicaid/ Medicare in English, Spanish and Haitian Creole. Residents in need also received assistance applying for emergency rent and utility applications.
- We assisted residents in receiving over **\$2.9 million in SNAP benefits and \$1.1 million in pantry food.**
- **In the past two years we assisted more than 7,903 individuals with our weekly food pantry services. (1 in 3 residents in the Glades area)**

We have a high percentage of people living in poverty:
Belle Glade 40.2% & Pahokee 37.6% compared to Palm Beach County 11.6%



Behavioral Health Services

FAA Funding Allocation \$ 5,732,391.00

Alzheimer's Community Care	Adult Day Care	\$	222,072.00
Alzheimer's Community Care	Family Nurse Navigator	\$	563,721.00
American Assoc. Caregiving Youth	Caregiving Youth Project	\$	37,000.00
Boys Town	Care Coordination	\$	399,901.00
Center for Child Counseling	Integrated Care-recovery & Resilience	\$	207,958.00
Children's Case Management	Kin Support	\$	62,500.00
Children's Case Management	Participation, Access, Rights, Equity, Diversity (PARED)	\$	112,554.00
Drug Abuse Foundation	Adult Intensive Residential Treatment	\$	490,000.00
Drug Abuse Foundation	Medical Detox	\$	815,000.00
Drug Abuse Treatment Association	Walter Kelly treatment Center	\$	255,000.00
For the Children	Children Community Wellness	\$	245,366.00
Housing Partnership	Comm. Based Outpatient Services	\$	236,275.00
Housing Partnership	High Fidelity Wraparound Supporting Housing	\$	175,000.00
Jeff Industries	Job Placement Services	\$	26,000.00
Jeff Industries	Lets Go to Work	\$	139,000.00
South County Mental Health	CSU	\$	1,100,000.00
South County Mental Health	CSU Belle Glade	\$	445,000.00
South County Mental Health	Intake & Mobile Crisis Team	\$	600,099.00
South County Mental Health	Psychiatric & MH	\$	415,039.00
Wayside House	Partial Hospitalization Program	\$	480,000.00



THANK YOU!

CONTACT INFORMATION

Tammy K. Fields

561-355-3260

tfields@pbc.gov



#PBCGOV | pbc.gov