

**PALM BEACH COUNTY
BOARD OF COUNTY COMMISSIONERS
AGENDA ITEM SUMMARY**

Meeting Date:	August 20, 2024	<input checked="" type="checkbox"/>	Consent	<input type="checkbox"/>	Regular
		<input type="checkbox"/>	Workshop	<input type="checkbox"/>	Public Hearing

Department:	Engineering & Public Works
Submitted By:	Engineering & Public Works
Submitted For:	Traffic Division

I. EXECUTIVE BRIEF

Motion and Title: Staff recommends motion to:

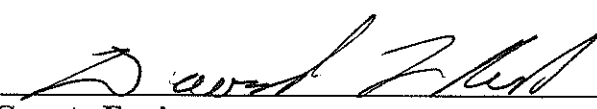
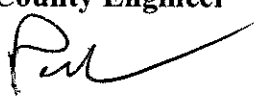
- A) **adopt** a Resolution supporting the submittal of a grant application (Application) to the Florida Department of Transportation (FDOT) Local Road Safety Program (LRSP) for funding the construction of pre-signals in advance of three (3) signalized railroad crossings (Project); committing to fund the local share of Project delivery and the associated ongoing operation and maintenance expenses; and providing for an effective date; and
- B) **ratify** the FDOT LRSP Application.

SUMMARY: Adopting this Resolution will support Palm Beach County’s (County) LRSP Application submittal for funding the construction of three (3) pre-signals at Silver Beach Road and Old Dixie Highway/President Barack Obama Highway; Frederick Small Road and Alternate A1A; and Hypoluxo Road and Dixie Highway/Federal Highway. If selected, the County will enter into a grant reimbursement agreement with the FDOT. The Project will be constructed within County road rights-of-way (ROW) and/or Florida East Coast Railway (FEC) ROW with FEC approval, of which will be determined during design of the Project. As part of the application process, the FDOT requires this Resolution to support the LRSP Application submittal and the County’s commitment to design, construct, operate and maintain the Project after construction. The LRSP grant will fund the Project’s construction at an estimated cost of \$757,399.89. **The County’s local participation funding is estimated at \$580,504.77 of voluntary funding for the Project’s design, construction management, and contingency.** Traffic signal timing is designed to flush traffic off of the railroad tracks. Pre-signals stop vehicles prior to railroad crossings when crossing warning devices are activated, and are recommended to control traffic upstream of the railroad crossing warning devices when the crossing is less than 200 feet from the intersection. Districts 1, 4, and 7 (YBH)

Background and Justification: The FDOT’s LRSP is a cost-reimbursement program for improving road safety on local road systems. The Project will increase the safety of motorists at the railroad crossings by preventing vehicles from accessing the area between the crossing and intersection altogether when the signal is red. The Engineering and Public Works Department recommends approval by the Board of County Commissioners.

Attachments:

1. Location Map
2. Resolution
3. FDOT Local Road Safety Program Application with Exhibit A

Recommended By:	<i>Ma</i> 	<i>7/11/2024</i>
	County Engineer	Date
Approved By:		<i>7/12/24</i>
	Deputy County Administrator	Date

II. FISCAL IMPACT ANALYSIS

A. Five Year Summary of Fiscal Impact:

Fiscal Years	2024	2025	2026	2027	2028
Capital Expenditures	-0-	-0-	-0-	-0-	-0-
Operating Costs	-0-	-0-	-0-	-0-	-0-
External Revenues	-0-	-0-	-0-	-0-	-0-
Program Income (County)	-0-	-0-	-0-	-0-	-0-
In-Kind Match (County)	-0-	-0-	-0-	-0-	-0-
NET FISCAL IMPACT	-0-	-0-	-0-	-0-	-0-
# ADDITIONAL FTE POSITIONS (Cumulative)	-0-	-0-	-0-	-0-	-0-

Is Item Included in Current Budget? Yes No

Is this item using Federal Funds? Yes No

Is this item using State Funds? Yes No

Budget Account No:

Fund Dept Unit Object

Recommended Sources of Funds/Summary of Fiscal Impact:

** This item has no fiscal impact at this time. If and when the LRSP Grant is selected and approved for funding by FDOT, it will be brought back to the Board of County Commissioners as an agenda item.

C. Departmental Fiscal-Review: Danny Ramalsingh

III. REVIEW COMMENTS

A. OFMB Fiscal and/or Contract Dev. and Control Comments:

ADWAL 7/12/24 Travis Macchillo 7/15/24
KK 7/12/24 Contract Dev. and Control
PA 7/12 7/15/24

B. Approved as to Form and Legal Sufficiency:

JPK 7/16/24
 Assistant County Attorney

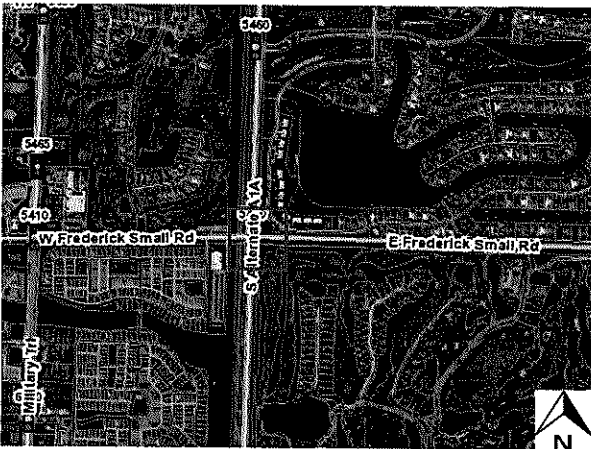
C. Other Department Review:

 Department Director

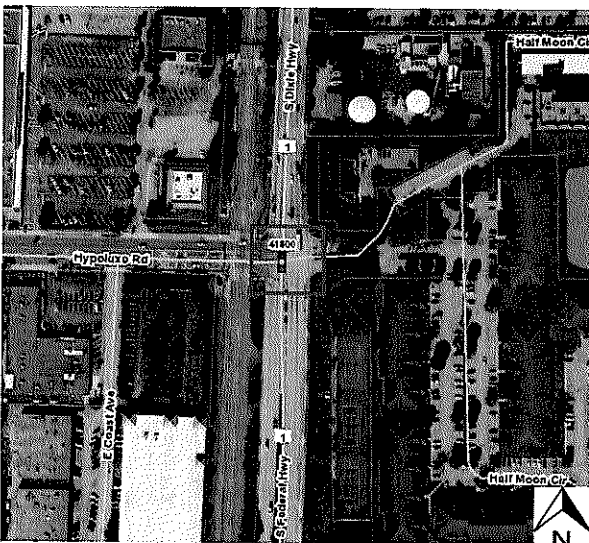
This summary is not to be used as a basis for payment.



**Silver Beach Rd and Old Dixie Hwy/President Barack Obama Hwy
(FDOT Crossing Number 272389V)**



**Frederick Small Rd and Alternate A1A
(FDOT Crossing Number 273020P)**



**Hypoluxo Rd and Dixie Hwy/Federal Hwy
(FDOT Crossing Number 272474K)**

RESOLUTION NO. 2024-_____

RESOLUTION OF THE BOARD OF COUNTY COMMISSIONERS OF PALM BEACH COUNTY, FLORIDA, SUPPORTING THE SUBMITTAL OF A GRANT APPLICATION TO THE FLORIDA DEPARTMENT OF TRANSPORTATION, LOCAL ROAD SAFETY PROGRAM FOR FUNDING THE CONSTRUCTION OF PRE-SIGNALS IN ADVANCE OF THREE SIGNALIZED RAILROAD CROSSINGS; COMMITTING TO FUND THE LOCAL SHARE OF PROJECT DELIVERY AND THE ASSOCIATED ONGOING OPERATION AND MAINTENANCE EXPENSES; AND PROVIDING FOR AN EFFECTIVE DATE.

WHEREAS, Palm Beach County (County) is eligible to apply for Local Road Safety Program (LRSP) funding from the Florida Department of Transportation (FDOT); and

WHEREAS, the County desires to make safety improvements at the signalized intersections on Silver Beach Road, Frederick Small Road, and Hypoluxo Road in close proximity to where they intersect with the Florida East Coast (FEC) Railroad (Project); and

WHEREAS, the Project includes designing and constructing three pre-signals that stop vehicles prior to the railroad crossing when the crossing warning devices are activated; and

WHEREAS, the Project will be constructed within County road rights-of-way (ROW) and/or FEC ROW with FEC approval, of which will be determined during design of the Project; and

WHEREAS, FDOT will reimburse the County only for eligible construction and construction management costs associated with the Project; and

WHEREAS, eligible construction management costs associated with the Project to be funded by the LRSP are estimated at \$757,399.89; and

WHEREAS, the County's local participation funding for design, construction management, and contingency is estimated at \$580,504.77; and

WHEREAS, after construction of the Project, the County agrees to operate and maintain the Project contingent upon an annual appropriation by the Board of County Commissioners (BCC).

NOW, THEREFORE, BE IT RESOLVED BY THE BOARD OF COUNTY COMMISSIONERS OF PALM BEACH COUNTY, FLORIDA, that:

1. The foregoing recitals are true and correct and are incorporated herein.
2. The BCC hereby supports the submittal of the application to the FDOT for the LRSP funding of the Project.
3. If the Project is selected for funding by the FDOT, the County agrees to design and construct the Project and agrees to operate and maintain the Project after construction, contingent upon an annual appropriation by the BCC.
4. This Resolution shall take effect upon adoption.


The foregoing Resolution was offered by Commissioner _____ who moved for its adoption. The motion was seconded by Commissioner _____ and upon being put to a vote, the vote was as follows:

- Commissioner Maria Sachs, Mayor -
- Commissioner Maria G. Marino, Vice Mayor -
- Commissioner Gregg K. Weiss -
- Commissioner Michael A. Barnett -
- Commissioner Marci Woodward -
- Commissioner Sara Baxter -
- Commissioner Mack Bernard -

The Mayor thereupon declared the Resolution duly passed and adopted this _____ day of _____, 2024.

PALM BEACH COUNTY, A POLITICAL
SUBDIVISION OF THE STATE OF
FLORIDA BY AND THROUGH ITS
BOARD OF COUNTY COMMISSIONERS

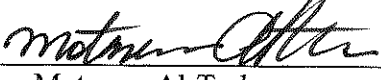
APPROVED AS TO FORM AND LEGAL
SUFFICIENCY

BY: ybh/tel 
Yelizaveta B. Herman
Assistant County Attorney

JOSEPH ABRUZZO, CLERK OF THE
CIRCUIT COURT AND COMPTROLLER

BY: _____
Deputy Clerk

APPROVED AS TO TERMS
AND CONDITIONS

BY: Motasem Al-Turk 
Motasem Al-Turk
Traffic Division, Director



Florida Department of Transportation

RON DESANTIS
GOVERNOR

3400 West Commercial Boulevard
Fort Lauderdale, FL 33309

JARED W. PERDUE, P.E.
SECRETARY

FDOT-District 4 New Local Road Safety Project Request Project Submission Checklist

Project Title: Addition of Pre-Signal at 3 Grade Crossings in Palm Beach County Date: 3/15/2024

The following documents and/or attachments are requested to be submitted for any safety project proposed by local agencies to be eligible for safety fund and considered for implementation through Local Agency Program (LAP) or other Department resources or support.

- Checklist – Completed and signed by all applicable parties. (*Checklist.pdf*)
- Completed Construction Cost Estimate.
(Prepared, signed and sealed by a Professional Engineer from the Agency's Engineering Office or Consultant, when possible, to determine the most accurate project costs for programming purposes.) Cost estimates should use the most recently available FDOT unit costs.

Select applicable spreadsheet format used: *FDOT_administered_Cost_Estimate.xlsx*
 LAP_administered_Cost_Estimate.xlsx
- Project Scoping Form. (*Project Scoping Form.pdf*)
- Project Location Map - depicting "Begin" and "End" limits for proposed project. (*Location_Map.pdf*)
- Existing and Proposed Typical Sections and/or condition/improvement concepts - including existing ROW width and dimensions for all existing and proposed features. Include features that might represent potential conflict such as existing utility poles, lighting, existing fence, etc. Concepts do not need to be fully engineered drawings but should be of a level of detail to vet the feasibility and potential conflicts of the improvement (*Typical_Sections.pdf or Improvement_Concept.pdf*)
- Right-of-Way Ownership Verification - Maps or applicable documents denoting ownership for the project. Project location shall be highlighted/noted within provided documents. (*Right-of-Way.pdf*) (i.e.: Right of way maps, plats, deeds, certified surveys, land-use agreements, right of use permits and/or easements.) Copies of original documents required, screenshots from any website are not allowed.
- Public Involvement/ Outreach Documentation - detailed public support for specific* projects on how the community support was gathered and evaluated. (*Public_Support.pdf*) (Public outreach presentations, Sign- in sheets, meeting minutes, flyers, social and/or newsletters)

Page 1 of 4

Attachment 3
Page 1 of 13

* Projects that impact mature trees or significant number of trees, residential landscape/hardscape in the existing right-of-way, access to businesses and parking areas are examples of projects requiring early coordination with the residents and property owners to show project support.

- Required Resolution of Support: (Resolution.pdf)
Draft submitted. Next Board meeting is June 4th.

For Projects to be administered by FDOT (Minimum Construction Cost \$500,000):

(All projects to be administered and delivered by FDOT must be vetted by the Department 6 weeks prior to application submittal. The Department shall consider the request to determine viability of entity to deliver project, which may be the Department or the local agency)

Select what applies: Off-system project (Local Road) - Agency requests FDOT to administer

- Letter of consistency from Department providing feedback on the project.
- Resolution from the applicant's governing board approving the specific project recognizing the Department delivering the project on behalf of the agency for Design and Construction phases.
- Resolution from the responsible governing board confirming commitment to fund the project's O&M.

(Projects administered by the Department on behalf of the local agency require a signed Highway Maintenance Memorandum of Agreement (HMMOA) with the Department during Design.)

For Projects to be administered by LAP (Minimum Construction Cost \$250,000):

(All Off-system projects must be administered by a Local Agency unless requested otherwise, as stated above.)

Select what applies: Off-system project (Local Road)

- Resolution from the applicant's governing board approving the specific project.
Draft submitted. Going to Board June 4th
- Resolution from the roadway owner (governing board) that has ownership over the project related right-of-way approving the specific project.
Draft submitted. Going to Board June 4th
- Resolution from the responsible governing board confirming commitment to fund the project's Operation & Maintenance (O&M).
Draft submitted. Going to Board June 4th
- LAP Eligibility Coordination: **(Initial_LAP_Coordination.pdf)**
Any governmental entity other than the Department of Transportation must be LAP certified to administer any Federal Aid projects. If an Agency is seeking to implement any project phase through LAP, then Agency shall start seeking required LAP Certification after project funding is awarded. However, coordination with the District Local Program Administrator shall be initiated at least 6 weeks prior to application submittal, to discuss the LAP Certification process and eligibility. Proof of coordination shall be provided with application submittal.

Palm Beach County's Holly Knight is LAP Certified.

Safety Analysis/Traffic Analysis / Traffic Study Coordination: ***(Initial_Traffic_Coordination.pdf)***

All local agency safety projects must provide a safety and traffic analysis to demonstrate the estimated safety benefit of the project with particular attention to reducing fatal and incapacitating injury crashes. The level of detail of the analysis can vary with the scope of the project.

Prior to conducting the detailed safety analysis, the local agency shall coordinate with the District Safety Office to confirm initial viability of the project and high-level department concurrence. See below for information to provide to the District Safety Office in coordination.

The requirements of the safety analysis must be coordinated at least four weeks in advance of project submittal. Initial coordination with the District Safety Office shall include, at a minimum, documentation of:

- Safety concern being addressed by the project
- Initial concepts and descriptions of the project
- Preliminary planning level cost estimates of the project
- Preliminary review of potential impacts to ROW, utilities, drainage, and other factors which may impact the feasibility and cost of the project.
- If the project is adjacent to any upcoming or currently underway projects, then provide available related documentation
- A letter of support from the local agency director level or above

(Coordination should be initiated with the Department Safety Office for requirements review prior to application submittal.) Proof of coordination shall be provided.

Safety Analysis/Traffic Analysis / Traffic Study

A safety/traffic analysis appropriate to the scope of the project shall be submitted to the district to review the technical considerations of the project. A safety analysis checklist is provided as a guide for potential elements to be incorporated into the safety analysis. ***(Safety_Checklist.pdf)***

Please see the Final Report submitted with this application that contains the information provided in the Safety Checklist.

- Additional Supporting Documentation
(not required, however, if available, it will facilitate review process)
 - Page(s) from local plan or program that references the project.
 - Any supporting data and technical analysis.
 - If the project is part of a corridor study, include page(s) where the project is referenced.
 - If the project is adjacent to any upcoming or currently underway projects, then provide available related documentation.

Local Road Safety Project Development Checklist

Crash Data Analysis					
Analysis Element	Completed	Not Completed	N/A	In Report/Appendix	Notes/Comments
Signal Four Data Source					
2016-2020 Base Analysis	X			X	
2021 & 2022 Supplemental					
Manual Police Report Review (All years crashes of interest)	NA				
Location					
Crash Type					
Summary Table				X	
Collision Diagram					
Year					
Crash Type					
Location/Direction					
Severity					
Day/Night					
Wet/Dry					
Optional Charts					
Location					
Time of Day					
Summarize Issues and Patterns					
Field Review					
Peak Periods (AM, Midday, PM, School, Other)				X	
Nighttime (as needed)					
Observed safety issues					
Document user behavior				X	
Document observed traffic characteristics				X	
Initial review of implementation obstacles				X	
ROW					
Utilities					
Other					
Countermeasure Development					
Solves the problem				X	
Constructable					
Good value (Consider cost vs. ability to solve issues)				X	
Document source or assumptions					
Stakeholder Identification/Coordination (Note: Appropriate Stakeholders should be identified based on the improvement)					
Maintaining Agency				X	Palm Beach County
Elected Officials (as needed)					
Nearby Residents (as needed)				NA	
Nearby Businesses (as needed)					
Other					
Feasibility Reviews (May request a template)					
Concept Plans/Sketch				X	
Review Impacts to:					
ROW				X	
Utilities				X	Further utility coordination in design needed
Environmental Mitigation				minimal	
Trees/Landscaping				na	
Sight Obstructions				na	
Other constructability					
Unforeseen issues, unintended consequences					
Cost Estimation					
Prepared by/reviewed by PE				X	
Detail to pay item					
FDOT Historical Costs				X	
Include non-construction items					
Preliminary Engineering/Design					
Survey					
CEI					
MOT/MOB					
Itemize agency responsible for costs					
Financial Analysis					
Benefit Cost				X	
Proper Application of CMF				X	
Crash Cost Assumptions					
Lifecycle Assumption					
Net Present Value				X	

ENGINEERS COST ESTIMATE
 (Use for Off-System Projects - Administered through LAP)
Project Description: Install Near Side Mast Arms at 3 Intersections (TS-19100, TS-05420, TS-41800)

Pay Item Number*	Pay Item Description*	Participating				**Non-participating (Local funds)				Total Quantity	Total Engineer's Cost
		Quantity	Unit	Engineer's Unit Cost	Engineer's Subtotal Cost	Quantity	Unit	Engineer's Unit Cost	Engineer's Subtotal Cost		
102-14	MAINTENANCE OF TRAFFIC (TRAFFIC CONTROL OFFICER) - [HR] [F&I]		LS	10%	\$ 60,469.25				\$ -	0	\$ 60,469.25
102-1-A	GENERAL MAINTENANCE OF TRAFFIC - [HR] [F&I]		LS	10%	\$ 60,469.25				\$ -	0	\$ 60,469.25
630-2-12-2-2	CONDUIT, F&I, DIRECTIONAL BORE UNDER PAVEMENT	225	LF	\$ 38.11	\$ 8,574.75				\$ -	225	\$ 8,574.75
630-2-12-2-2	CONDUIT, F&I, DIRECTIONAL BORE UNDER RAIL ROAD TRACKS	330	LF	\$ 100.00	\$ 33,000.00				\$ -	330	\$ 33,000.00
632-7-1-19	SIGNAL CABLE, F&I	700	LF	\$ 25.00	\$ 17,500.00				\$ -	700	\$ 17,500.00
632-7-1-7	SIGNAL CABLE - 7 CONDUCTOR, F&I	375	LF	\$ 20.00	\$ 7,500.00				\$ -	375	\$ 7,500.00
635-2-14	PULL & SPLICE BOX, F&I, 17" X 30" COVER SIZE	8	LF	\$ 2,000.00	\$ 16,000.00				\$ -	8	\$ 16,000.00
649-21-1	STEEL MAST ARM ASSEMBLY, F&I, SINGLE ARM 30'	1	EA	\$ 69,855.50	\$ 69,855.50				\$ -	1	\$ 69,855.50
649-21-1	STEEL MAST ARM ASSEMBLY, F&I, SINGLE ARM 40'	2	EA	\$ 77,856.50	\$ 155,713.00				\$ -	2	\$ 155,713.00
650-1-14	VEHICULAR TRAFFIC SIGNAL, F&I ALUMINUM, 3 SECTION, 1 WAY	6	EA	\$ 1,790.42	\$ 10,742.52				\$ -	6	\$ 10,742.52
650-1-16	VEHICULAR TRAFFIC SIGNAL, F&I ALUMINUM, 4 SECTION, 1 WAY	1	EA	\$ 2,273.58	\$ 2,273.58				\$ -	1	\$ 2,273.58
650-1-19	VEHICULAR TRAFFIC SIGNAL, F&I ALUMINUM, 5 SECTION CLUSTER, 1 WAY	3	EA	\$ 3,485.78	\$ 10,457.34				\$ -	3	\$ 10,457.34
650-1-44	VEHICULAR TRAFFIC SIGNAL, F&I PROGRAMMABLE, 3 SECTION, 1 WAY	9	EA	\$ 9,412.78	\$ 84,715.02				\$ -	9	\$ 84,715.02
650-1-46	VEHICULAR TRAFFIC SIGNAL, F&I PROGRAMMABLE, 4 SECTION, 1 WAY	2	EA	\$ 15,258.00	\$ 30,516.00				\$ -	2	\$ 30,516.00
650-1-48	VEHICULAR TRAFFIC SIGNAL, F&I PROGRAMMABLE, 5 SECTION, 1 WAY	6	EA	\$ 17,307.46	\$ 103,844.76				\$ -	6	\$ 103,844.76
	STRIPING (DYNAMIC ENVELOPE + STOP BAR) & RPMs & MILLING	3	EA	\$ 18,000.00	\$ 54,000.00				\$ -	3	\$ 54,000.00
					\$ -				\$ -	0	\$ -

	Funds for Construction (Phase 58)	\$ 725,630.96	Local Funds for Construction (Phase 58)	\$ -	Subtotal	\$ 725,630.96
--	-----------------------------------	---------------	---	------	----------	---------------

FDOT IN-HOUSE DESIGN SUPPORT (Phase 31) (REQUIRED)	1	LS	\$5,000	\$ 5,000.00	FDOT In-House Support must be included as an FHWA Participating Item; Local Agencies have the option to request funding for Design and CEI, percentages are at the discretion of the Local Agency.			
ADDITIONAL FDOT IN-HOUSE DESIGN SUPPORT FOR CRITICAL PROJECTS	0	LS	\$2,000	\$ -				
FDOT IN-HOUSE CONSTRUCTION SUPPORT (Phase 61) (REQUIRED)	1	LS	\$5,000	\$ 5,000.00				
ADDITIONAL FDOT IN-HOUSE CONSTRUCTION SUPPORT FOR CRITICAL PROJECTS	0	LS	\$2,000	\$ -				
PRELIMINARY ENGINEERING (DESIGN) (Phase 38) (OPTIONAL)**	1	LS		\$ -				
CONTINGENCY (Phase 58) (REQUIRED)			Contingency is not a FHWA Participating Item					
TRANSIT RELATED PROJECTS (10% FTA ADMINISTRATIVE FEE)			Administrative Fee is not a FHWA Participating Item					
CONSTRUCTION ENGINEERING & INSPECTION ACTIVITIES (CEI) (Phase 68) (OPTIONAL)***	1	LS		\$ -	1	LS	35%	\$ 253,970.84
Post Design Services					1	LS	20%	\$ 145,126.19
FDOT OVERSIGHT CEI (3% OF TOTAL CONSTRUCTION COST ESTIMATE) (Phase 62) (REQUIRED)	1	LS	3%	\$ 21,768.93			5%	\$ 36,281.55
				\$ 757,399.89				\$ 580,504.77
				Subtotal FHWA Participating				\$ 1,337,904.66
								Subtotal FHWA Non-Participating
								Total Construction Cost Estimate

*Projects on the State Highway System and Critical Projects **SHALL** utilize FDOT pay items numbers and descriptions.
 **Estimated cost for preparation of the Construction Plans, Specs, and estimate package.
 ***Estimated cost for Construction Engineering and Inspection; Must provide an estimate if seeking reimbursement for Professional Services.

Non-participating items:

- Mowing & Litter removal
- Engineering work; Optional services; Survey; Video inspection; MOT plans preparation; As-builts/record drawings
- Utility work -- this includes, but is not limited to: valve adjustments, utility relocations, FPL power pole relocations, AT&T directional
- Contingency

Other elements may be non-participating; the ones listed above are the commonly used pay items that are non-participating.

DESIGN AND CEI FEE GUIDE:

	Recommended Percentage (%) of Construction Cost Estimate
DESIGN (Phase 38)	15-30%
CONSTRUCTION ENGINEERING & INSPECTION ACTIVITIES (CEI) (Phase 68)	15-30%

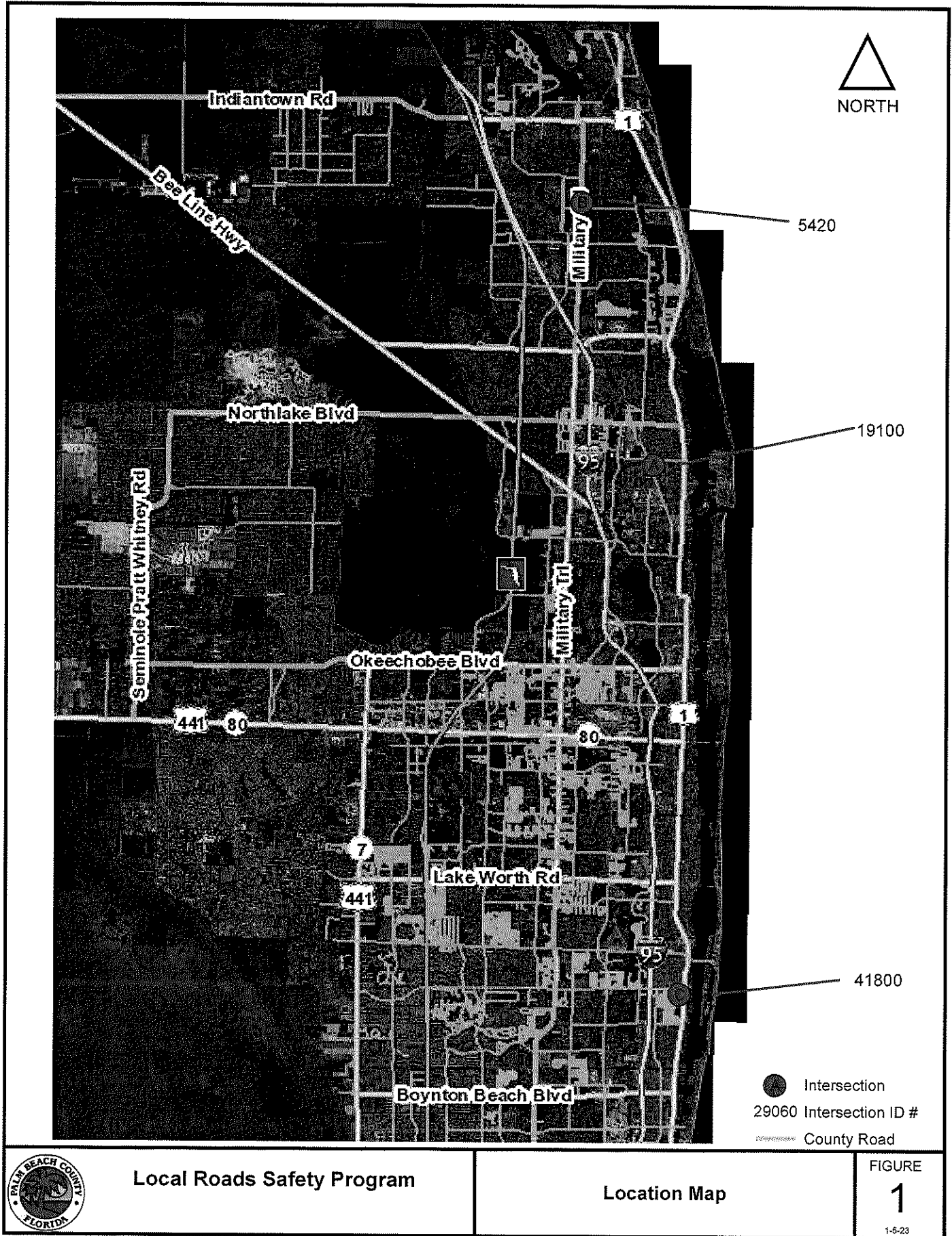
PLEASE NOTE: THE FUNDING REQUEST FOR PROFESSIONAL SERVICES MAY BE OPTIONAL; PLEASE REFER TO YOUR T/MPO/TPA PROGRAM REQUIREMENTS. THE PERCENTAGES ABOVE IS ONLY A GUIDE. LOCAL AGENCIES ARE RESPONSIBLE FOR DETERMINING THE APPROPRIATE PERCENTAGE OF CONSTRUCTION FOR DESIGN AND CEI ESTIMATES AS WELL AS CONTINGENCY. COST MAY CHANGE AFTER PROJECT AWARD DUE TO DESIGN AND CONSTRUCTION VARIABLES. REVIEW OF FDOT FUNDING ALLOCATION WILL BE EVALUATED OVER THE LIFE OF THE PROJECT. THE LOCAL AGENCY WILL BE RESPONSIBLE FOR ALL INELIGIBLE/NON-

If you have any questions regarding an eligible or non-participating item, please contact District Four Local Program Unit.

Prepared by: Fahmeh Tabar Kabbaj PE Number: 60478
 Name: _____ Signature: _____ Date: 3-13-2024

Reviewed by: Melissa Aulet
 Name: _____ Signature: _____ Date: 3-13-24

Approved by (Agency Responsible Charge):



5420

19100

41800

- Intersection
- 29060 Intersection ID #
- County Road

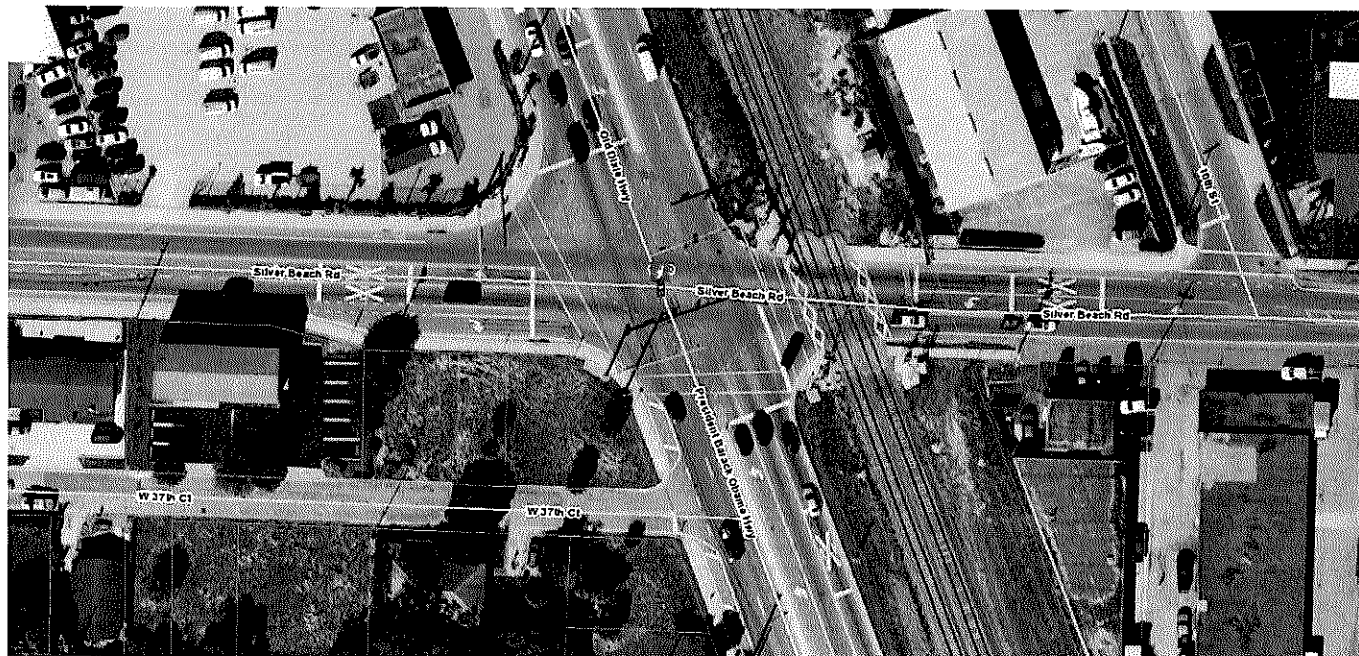


Local Roads Safety Program

Location Map

FIGURE
1
1-5-23

N:\TRAFFIC\CMW\2023\LI - Signals\Location Map.doc



Local Roads Safety Program

#19100
Silver Beach Rd & Old Dixie Hwy
Location Map

FIGURE

1A

12-13-22

N:\TRAFFIC\Jamie C\Grants\FYA TPA Grant 2023\Templates\FDOT LM.doc

Attachment 3
Page 8 of 13



Local Roads Safety Program

#5420
Frederick Small Rd & Alt A1A
Location Map

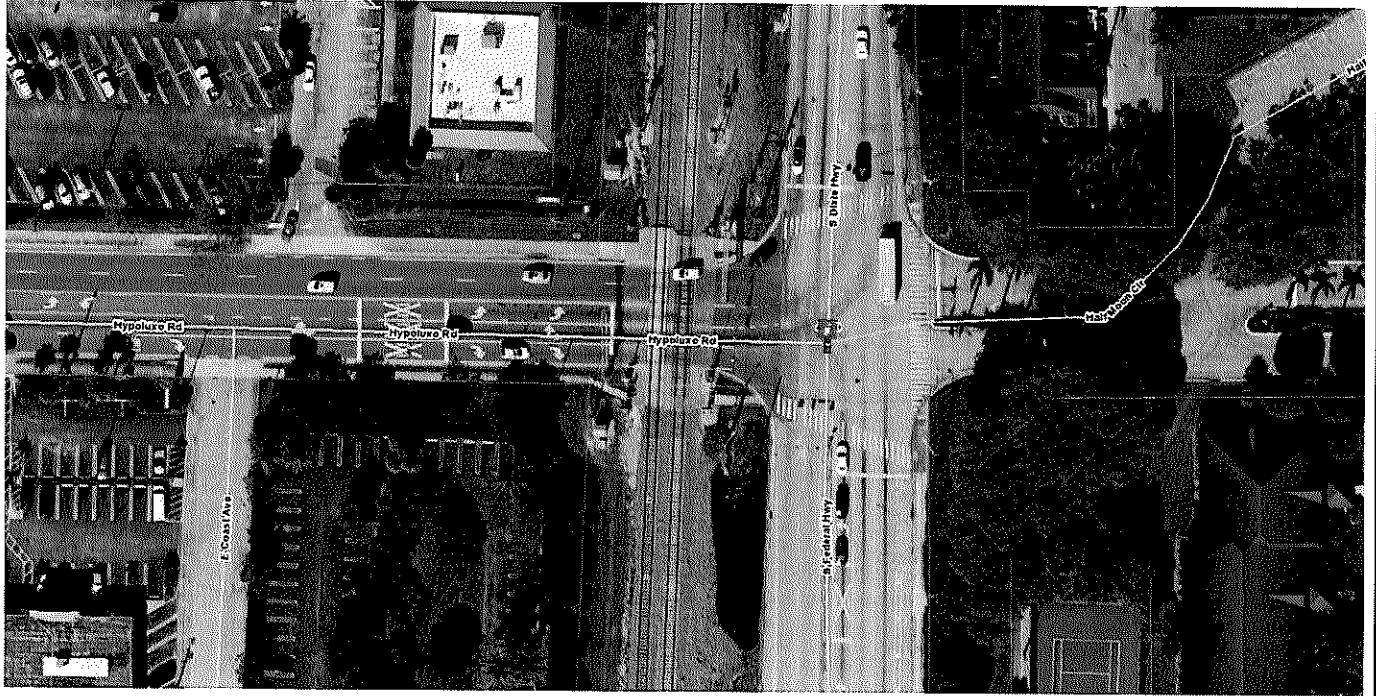
FIGURE

1B

12-13-22

N:\TRAFFIC\Jamie C\Grants\FYA TPA Grant 2023\Templates\FDOT LM.doc

Attachment 3
Page 9 of 13



Local Roads Safety Program

#41800
Hypoluxo Rd & Federal Hwy
Location Map

FIGURE
1C

12-13-22

N:\TRAFFIC\Jamie C\Grants\FYA TPA Grant 2023\Templates\FDOT LM.doc

Attachment 3
Page 10 of 13



SCOPING APPLICATION FORM

Updated: 9/19/2022

General Information:

Project Title: Addition of Pre-Signal at Three Grade Crossings in Palm Beach County

Name of Applicant (If other than Project Sponsor): Palm Beach County

Project Sponsor: Palm Beach County
(municipality, county, state, federal agency, or tribal council)

Contact Person: Melissa Ackert
Title: Assistant Director, Traffic Division
Email: Mackert@pbcgov.org
Phone Number: 561-684-4030

Sponsor Address: 2300 N Jog Rd
West Palm Beach, FL 33411

(All of the following items are required - applications without this information will not be reviewed)

1 Project Description:

Road Name: Silver Beach Rd, Frederick Small Rd, Hypoluxo Rd

Road Number: NA (US, SR, CR, etc.) Local Road (Off-System) State Road (On-System)

[**NOTE:** Proposed on-system projects (i.e.: ON the State Highway System) must be discussed with / vetted by the Department at least **6 weeks prior** to the application submittal.

Off-system projects will be delivered by the Local Agency through the LAP process; On-system projects will be administered/delivered by FDOT.

Select complex projects (i.e.: Bridges carrying traffic, over traffic, over major waterways) may be better to be delivered by the Department. The Department will determine who is best suited to administer/deliver complex projects during the vetting process.

Resolution of support from the Agency designing and constructing the project is required with the application submittal.]

Project Limits: (to be listed from South to North and/or from West to East as applicable)

Intersection #	N/S Road	E/W Road
19100	Old Dixie Hwy	Silver Beach Rd
5420	Alt A1A	Frederick Small Rd
41800	S Federal Hwy	Hypoluxo Rd

- (a) Project Location map (depicting Begin/End limits for proposed project.)
 Location map attached. (**Location_Map.pdf**) (*Required*)
- (b) Project Typical Sections – Typical Sections shall be provided - including existing ROW width and dimensions for all existing and proposed features. Include features that might represent potential conflict such as existing utility poles, lighting, exist. fence, etc.
 Existing and proposed typical sections attached (**Typical_Sections.pdf**)

3 Project Scope:

- (a) Project Scope of Work

Briefly describe the scope of work of the project. Include major items of work to be built.

Add upstream "Pre-Signal" mast arm signal to supplement existing signalized intersection in close proximity to the FEC railroad. Add programmable signal heads to existing signal for the downstream signals facing the pre-signal.

- (b) Describe any public support of the proposed project. (Examples include written endorsement, formal declaration, resolution, public outreach presentations, Sign- in sheets, meeting minutes, flyers, social and/or newsletters)

Public Support Documentation is attached (**Public_Support.pdf**)

4 Cost Estimate:

The total amount of funds allowed to be requested per projects (infrastructure) will vary depending on the selected program.

- (a) Provide detailed project cost estimate. Estimate shall be broken down to eligible and non-eligible project costs. Estimates are to be prepared and signed by a Professional Engineer from the Local Agency's Engineering office.

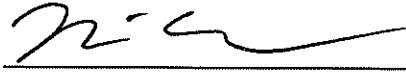
Use the following links to access the basis of estimates manual as well as historical cost information for the project area:

- [Basis of Estimates Manual](#)
- [Historical Cost Information](#)

X A completed Engineer Cost estimate is attached. *(Required)*

Complete the attached Cost estimates as applicable:

X LAP_administered_Cost_Estimate.xlsx



Signature

Melissa Ackert

Name *(please type or print)*

Assistant Director, Traffic Division

Title

March, 15, 2024 _____

Date

FOR FDOT USE ONLY

Application Complete	<input type="checkbox"/> Yes	<input type="checkbox"/> No
Project Eligible	<input type="checkbox"/> Yes	<input type="checkbox"/> No
Implementation Feasible	<input type="checkbox"/> Yes	<input type="checkbox"/> No
Include in Work Program	<input type="checkbox"/> Yes	<input type="checkbox"/> No