

II. FISCAL IMPACT ANALYSIS

A. Five Year Summary of Fiscal Impact:

Fiscal Years	2024	2025	2026	2027	2028
Capital Expenditures	\$ 296,724	-0-	-0-	-0-	-0-
Operating Costs	-0-	-0-	-0-	-0-	-0-
External Revenues	-0-	-0-	-0-	-0-	-0-
Program Income (County)	-0-	-0-	-0-	-0-	-0-
In-Kind Match (County)	-0-	-0-	-0-	-0-	-0-
NET FISCAL IMPACT	\$ 296,724	-0-	-0-	-0-	-0-
# ADDITIONAL FTE POSITIONS (Cumulative)	-0-	-0-	-0-	-0-	-0-

Is Item Included in Current Budget?	Yes <input checked="" type="checkbox"/>	No <input type="checkbox"/>
Is this item using Federal Funds?	Yes <input type="checkbox"/>	No <input checked="" type="checkbox"/>
Is this item using State Funds?	Yes <input type="checkbox"/>	No <input checked="" type="checkbox"/>

Budget Account No :
Fund 3500 Dept 361 Unit 2023 Object 6505

Recommended Sources of Funds/Summary of Fiscal
Transportation Improvmt Fund
Orange Grove & Persimmon Blvd. Right Turn Lanes at SR 7

Consultant Services Authorization (CSA) #5	
• Basic Services	\$ 200,692.79
• Reimbursable	\$ 9,289.64
• Optional Services	\$ 6,740.64
Total CSA #5	\$ 216,723.07
Estimated Staff Costs	
• Roadway Production	\$ 35,000.00
• Roadway Production: Right-of-Way	\$ 10,000.00
• Survey	\$ 10,000.00
• Traffic	\$ 25,000.00
Total Staff Costs	\$ 80,000.00
Fiscal Impact	\$ 296,723.07

C. Departmental Fiscal Review: *Danny Rombalisco*

III. REVIEW COMMENTS

A. OFMB Fiscal and/or Contract Dev. and Control Comments:

Laura Mante 8/13/2024
OFMB *JA 8/13*

Freddie Gratch 8/20/24
Contract Dev. and Control
Int 8/19/24

B. Approved as to Form and Legal Sufficiency:

MPH 8/20/24
Assistant County Attorney

C. Other Department Review:

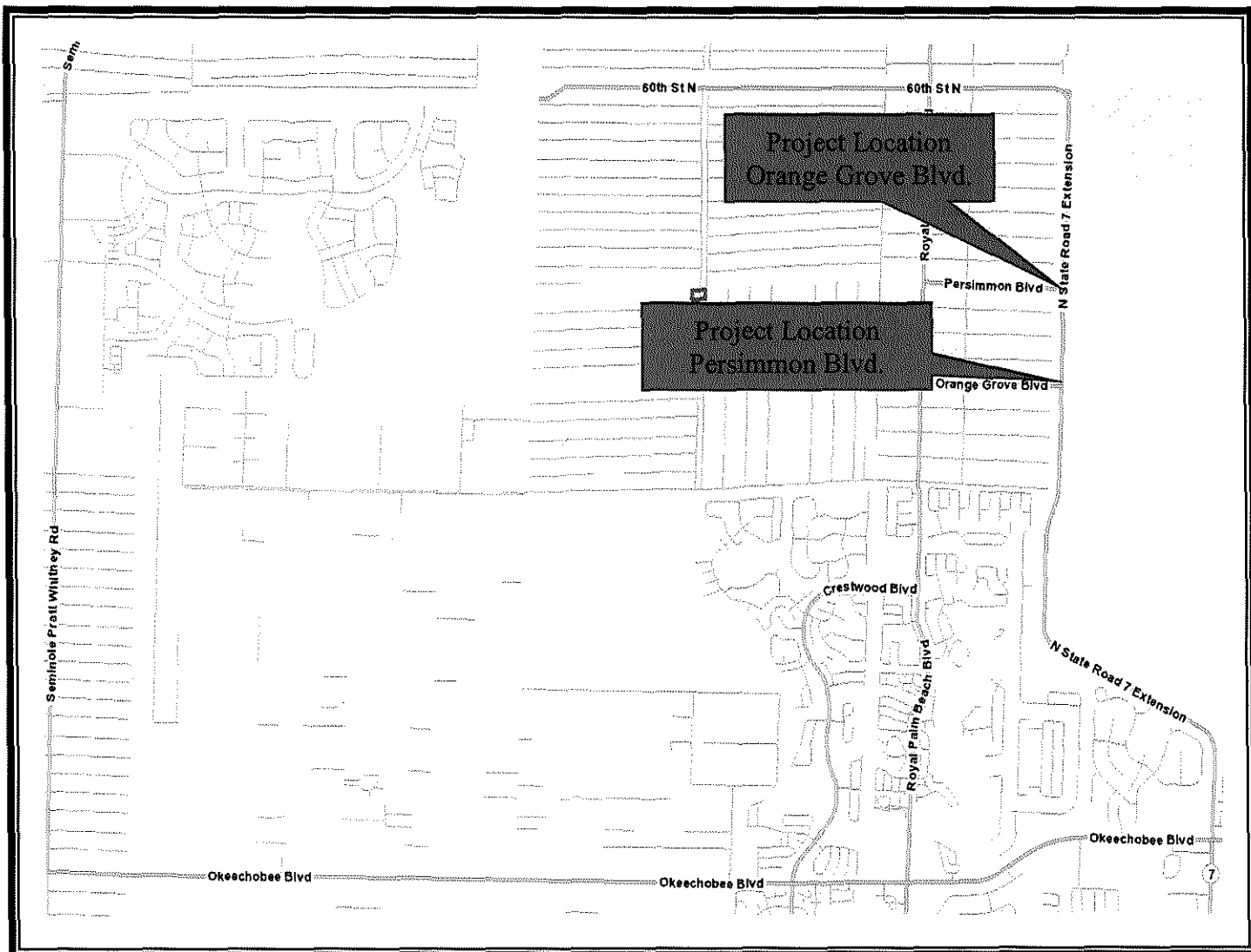
Department Director

This summary is not to be used as a basis for payment.

PROJECT LOCATION

Orange Grove Blvd. and Persimmon Blvd. Right Turn Lanes at SR 7

Palm Beach County Project #2024507



LOCATION MAP

ATTACHMENT 1

CONSULTANT SERVICE AUTHORIZATION NO. 5
UNDER THE INTERSECTION IMPROVEMENTS
ANNUAL DESIGN SERVICES CONTRACT

Project Name: **Orange Grove Blvd. and Persimmon Blvd. Right Turn Lanes at SR 7**

Project No: **2024507**

Commission District No.: **6**

	SBE
Participation for this authorization	4.17%
Participation to date for this Contract	82.46%
Contract Commitment	80%
This authorization is under the EBO Ordinance.	

PALM BEACH COUNTY
BOARD OF COUNTY COMMISSIONERS

Account No.: **3500-361-2023-6505**

Consultant Service Authorization No. 5 (CSA) under the Intersection Improvements Annual Design Services Contract dated April 18, 2023 (R2023-0476) (CONTRACT), between the COUNTY and the CONSULTANT identified herein is for the services described in **EXHIBIT A** and **EXHIBIT B** for this CSA.

1. CONSULTANT: **HSQ Group, LLC**
2. Address: **1001 Yamato Road, Suite 105, Boca Raton, FL 33486**
3. CONSULTANT shall begin work promptly on the requested Services, per the schedule attached as part of **EXHIBIT A**.
4. Scope of Services to be provided by CONSULTANT: Provide professional engineering services to Palm Beach County for the right turn lanes on Orange Grove Blvd. and Persimmon Blvd. project at SR 7. Work includes design of the eastbound to southbound right turn lanes for each intersection in accordance with the attached **EXHIBIT A** dated June 12, 2024.
5. The compensation to be paid CONSULTANT for providing the requested services as detailed in **EXHIBIT B** shall be:

<input checked="" type="checkbox"/> Basic Services in a lump sum fee of	\$200,692.79
<input checked="" type="checkbox"/> Reimbursable Expenses capped at	\$ 9,289.64
<input checked="" type="checkbox"/> Optional Services capped at	\$ 6,740.64
Totaling	\$216,723.07

- OEBO Schedules 1 & 2 **EXHIBIT C**
- Project History **EXHIBIT D**

6. All terms of the CONTRACT shall apply to this CSA.

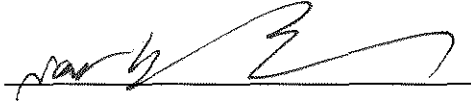
ATTACHMENT 2


CONSULTANT SERVICE AUTHORIZATION NO. 5
UNDER THE INTERSECTION IMPROVEMENTS
ANNUAL DESIGN SERVICES CONTRACT

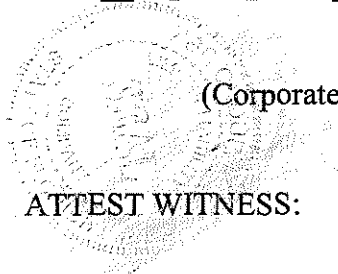
IN WITNESS WHEREOF, this CSA is accepted as of the date signed by the COUNTY below, subject to the terms and conditions of the aforementioned CONTRACT.

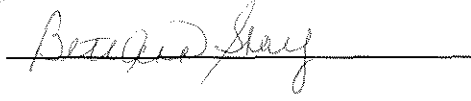
CONSULTANT: **HSQ Group, LLC**
Federal ID: VC0000016826

COUNTY:
Approved as to Terms and Conditions

Signed: 
Typed Name: Nour Shehadeh, P.E.
Title: Managing Member
Date: Nour Shehadeh

By: 
Typed Name: Morton L. Rose, P.E.
Title: Division Director


(Corporate Seal)
ATTEST WITNESS:

Signed: 
Typed Name: BethAnn Shay
Title: Office Manager
Date: August 1, 2024

CONSULTANT SERVICE AUTHORIZATION NO. 5
UNDER THE INTERSECTION IMPROVEMENTS
ANNUAL DESIGN SERVICES CONTRACT

{SIGNATURE PAGES CONTINUED}

COUNTY: **Palm Beach County**, a Political
Subdivision of the State of Florida, by and
through its Board of County Commissioners

Signed: _____

Typed Name: Maria Sachs

Title: Mayor

Date: _____

ATTEST:

Joseph Abruzzo
Clerk of the Circuit Court & Comptroller

By: _____
Deputy Clerk

Approved as to Form and Legal Sufficiency

By: _____

Typed Name: Yelizaveta B. Herman

Title: Assistant County Attorney

F:\ROADWAY\CCNA\ANNUALS-INTERSECTION\HSQ\2024\2024507 SR 7 Turn Lanes\CSA and Supplement Template.docx



HSQ GROUP, LLC

Engineers • Planners • Surveyors

1001 Yamato Road • Boca Raton, Florida 33431, Suite 105 • Phone (561) 392-0221 hsqgroupinc.com

*Scope + Fee OK
AD 6/13/24
CB 6/13/24*

SCOPE OF SERVICES

SR7 Right Turn Lanes -Orange Grove/Persimmon Blvd.

Palm Beach County Project No. 2024507

April 2, 2024

Revised on 5/20/2024

Revised on 6/4/2024

Revised 6/10/2024

Revised 6/12/2024

PROJECT LIMITS

Orange Grove Boulevard:

From 110th Ave. to the west right-of-way line of SR7, and from fence to fence along Orange Grove Blvd. for a total distance of approximately 250'.

State Road 7 at Orange Grove Boulevard:

From 150' north of the centerline of the intersection of Orange Grove Blvd. and SR7 to approximately 1800' south of the intersection, and from west edge of pavement to west fence along SR7.

Persimmon Boulevard:

From 110th Ave. to the west right-of-way line of SR7, and from fence to fence along Persimmon Blvd. for a total distance of approximately 250'.

State Road 7 at Persimmon Boulevard:

From 150' north of the centerline of the intersection of Persimmon Blvd. and SR7 to approximately 1800' south of the intersection, and from west edge of pavement to west fence along SR7.

Total project length 4400 LF or 0.84 miles

PROJECT DESCRIPTION

The design of the project will be based on the following:

- 1- The design speed will be 45 mph on SR7 and 35 mph on Orange Grove Blvd. and 35 mph on Persimmon Blvd.
- 2- Provide an eastbound to southbound hot right at the intersection of SR7 & Orange Grove Blvd. This will require widening of the south side of Orange Grove Blvd. between 110th Ave & SR7, and the widening of the west side of SR7 to accommodate the turning radius and merge length of the hot right.
- 3- Provide an eastbound to southbound hot right at the intersection of SR7 & Persimmon Blvd. This will require modifications of the south side of Persimmon Blvd. between 110th Ave & SR7, and the widening of the west

**HSQ GROUP, LLC****Engineers • Planners • Surveyors**1001 Yamato Road • Boca Raton, Florida 33431, Suite 105 • Phone (561) 392-0221 hsqgroupinc.com

side of SR7 to accommodate the turning radius and merge length of the hot right.

- 4- The lane width for the eastbound hot right onto SR7 will be 11' + 5' bike lane for both Orange Grove Blvd. and Persimmon Blvd. The bike lane will **transition to 4'** prior to the start of the lane taper.

Plans will be prepared in accordance with the following standards:

- Palm Beach County, Thoroughfare Roadway Design Procedures (January 2019)
- Palm Beach County Typicals for Pavement Markings, Signing & Geometrics (T-P-21) (February 2021)
- Florida Greenbook (2018 Edition)
- AASHTO "Geometrics Design of Highway and Streets" (2018)
- FDOT Drainage Manual (January 2023)
- MUTCD (January 2024)
- FDOT Standard Plans
- Florida Design Manual (2024)

BASIC SERVICES**1. Plans Preparation.**

Roadway plans with aerial background will be prepared in accordance with the approved Typical Section and Master Plan.

The following plan sheets are included in our scope of services:

- 1- Cover Sheet
- 2- Summary of Pay Items
- 3- Typical Sections
- 4- Drainage map
- 5- General Notes
- 6- Roadway Plans
- 7- Roadway Profiles
- 8- Drainage Structure Sheets
- 9- Miscellaneous Details/ Special Profiles
- 10- Cross Sections
- 11- SWPPP plans
- 12- Signing and Pavement Marking Plans
- 13- Reference Points
- 14- Project Network Control Sheet

2. Permitting

Permit application packages will be prepared and submitted to the following agencies:

- SFWMD (Modification of existing ERP)

Scope of Services
SR7 Right Turn Lanes - Orange Grove/Persimmon Blvd.

**HSQ GROUP, LLC****Engineers • Planners • Surveyors**1001 Yamato Road • Boca Raton, Florida 33431, Suite 105 • Phone (561) 392-0221 hsqgroupinc.com

- Indian Trail Improvement District (ITID)
- FDOT (RW permit & Construction agreement)

Permittable and constructible plans will be submitted to the county as part of the final delivery

3. Utility Coordination

Utility coordination services will consist of the following:

- Palm Beach County will provide the list of utility companies to HSQ.
- Preliminary plans will be submitted to utility agency owners by HSQ for use in obtaining utility markups from the various utility companies showing the location of existing facilities.
- Prepare a utility DGN file based on the markups received from the utility companies.
- Utility conflict matrix will be prepared at the 50% plan level and pothole information will be added to the matrix as they become available to help in any potential conflict resolutions. A utility pothole meeting will be scheduled by HSQ and attended by the County. The meeting to be held at the county's office or via webex.
- A final utility coordination meeting will be scheduled by HSQ and attended by the county. The meeting to be held at the county's office or via webex.
- Utility verification sheet (SUE) if needed

4. Drainage Design

Due to the widening, modification of existing inlets along Orange Grove and Persimmon Blvd. may be supplemented and/or modified. ASAD software will be used for the pipe sizing analyses to ensure that the additional impervious area is handled properly.

A pavement spread analysis will be performed to confirm that the existing inlet spacings are adequate with the increase in impervious areas.

The design and preparation of drainage system will be accomplished in substantial conformance with SFWMD, ITID, and FDOT. A drainage report will be prepared to document the design.

5. Plan Submissions

The plans will be prepared as follows:

Initial utility plans submittal

The 50% design plans submittal will include the proposed 50% roadway design plans to be reviewed and approved by PBC

The 100% design plans submittal will include the final roadway design to be approved by PBC

**HSQ GROUP, LLC****Engineers • Planners • Surveyors**1001 Yamato Road • Boca Raton, Florida 33431, Suite 105 • Phone (561) 392-0221 hsqgroupinc.com

The Final plans submittal will include the completed roadway plans, any permits and permit modifications, and project CAD files.

Optional Services

1. Post design services will consist of attendance at the pre-construction meeting, review of contractor's submittals including shop drawings, mix designs, and catalog cut sheets, reviewing and responding to contractor's requests for information, and providing clarifications on the intent of the plans.
2. Flood routing analysis for the swale area along the west side of SR7, within the project limits.

Reimbursable Services

1. **Geotechnical Engineering**
See attached Pacifica Scope of Service
-

Survey Services

Specific Purpose/Topographic Survey shall meet and be certified to the applicable portions of the Standards of Practice set forth by the Florida Board of Professional Surveyors and Mappers in rule 5J-17.050-.052, Florida Administrative Code, pursuant to Chapter 472.027, Florida Statutes and Appendix C of the Palm Beach County Roadway Design Procedures (January 2019).

Survey Limits**Orange Grove Boulevard:**

From 110th Ave. to the west right-of-way line of SR7, and from fence to fence along Orange Grove Blvd. for a total distance of approximately 250'.

State Road 7 at Orange Grove Boulevard:

From 150' north of the centerline of the intersection of Orange Grove Blvd. and SR7 to approximately 1800' south of the intersection, and from west edge of pavement to west fence along SR7.

Persimmon Boulevard:

From 110th Ave. to the west right-of-way line of SR7, and from fence to fence along Persimmon Blvd. for a total distance of approximately 250'.

State Road 7 at Persimmon Boulevard:

From 150' north of the centerline of the intersection of Persimmon Blvd. and SR7 to approximately 1800' south of the intersection, and from west edge of pavement to west fence along SR7.

Total length of survey to be performed = 0.84 miles

Scope of Services
SR7 Right Turn Lanes - Orange Grove/Persimmon Blvd.

**HSQ GROUP, LLC****Engineers • Planners • Surveyors**1001 Yamato Road • Boca Raton, Florida 33431, Suite 105 • Phone (561) 392-0221 hsqgroupinc.com

Survey Scope

1. Review the title information provided by Palm Beach County. Obtain available plats and deeds from the Palm Beach County Property Appraiser's website to establish existing right-of-way and compile the data to a base map. Consultant will advise the County of any apparent missing right-of-way documentation or of any apparent gaps or overlaps in the right-of-way documents provided.
2. Prepare a drawing showing the linework, width, and recording information of the right-of-way and easement documents provided and submit the drawing to the County for review and confirmation of existing right-of-way.
3. Collect horizontal control data using the global positioning system from publish monumentation, and establish control points every 600'± tied to Florida East Zone State Plan Coordinates (NAD 83, 1990 adjustment).
4. Collect published vertical benchmarks, perform a closed level loop, and establish benchmarks outside the limits of construction every 600'± (NAVD 1988 datum).
5. Locate subdivision corners, section corners, and other existing control monuments that will assist in the determination of the location of the right-of-way lines and platted centerlines. Identify the existing control recovered and provide ties to the project baseline.
6. Locate visible above ground features with elevations (including but not limited to sidewalks, utilities, signage, striping, etc.) along the project area and as described under survey limits
7. Cross-section the project area at 100' intervals, within the survey limits.
8. Obtain drainage structure rim and grate information. Inverts, pipe sizes, types, and culvert crossing will be obtained.
9. Locate trees 4" DBH and grater, indicating size and type, within the survey limits.
10. Prepare a digital terrain model (DTM) of the project limits.
11. Establish baselines along SR7, Orange Grove Blvd., and Persimmon Blvd. Determine historical baselines from available PBCO documents and tie to new baseline if different. Set baseline horizontal control points at the beginning, PC, PT, and end points. Set reference points to the baseline points (3 reference points each).
12. Prepare Specific Purpose/Topographic Survey consisting of:
 - a. Labeled right-of-ways, easements and adjacent parcels
 - b. Existing features mentioned above with spot elevations

Scope of Services
SR7 Right Turn Lanes - Orange Grove/Persimmon Blvd.

**HSQ GROUP, LLC****Engineers • Planners • Surveyors**1001 Yamato Road • Boca Raton, Florida 33431, Suite 105 • Phone (561) 392-0221 hsqgroupinc.com

- c. PBCO published section corners and/or control monuments tied to baseline begin and end
 - d. Found subdivision corners and/or other existing control monuments identified and tied to the baseline
 - e. Control points (horizontal and vertical) set every 600'± outside of the baseline
 - f. The drainage structure rim/grate data, inverts, and pipe sizes/types will be obtained
 - g. Monumentation set at the baseline points
 - h. Baseline survey, existing right-of-way, existing easements, centerline of construction, stations and offsets
 - i. Survey will be scaled to 1" = 40' on 11"x17" sheets and will be included in the Plan Set
13. Prepare Project Network Control Sheet (to include baseline data, PBCO control monuments, baseline monumentation, control points/benchmarks, notes, legend, etc.)
 14. Reference Point Sheet to be included in the Plan Set

Survey Deliverables

1. Topographic Survey (11"x17" sheets, 1" = 40' scale)
2. Project Network Control Sheet(s) and Reference Point Sheet(s)
3. The SURVRD01 file in Microstation/OpenRoads format
4. An ASCII file of points in terms of X,Y,Z description
5. A DTM in XML format for Microstation/OpenRoads
6. Digital signed Specific Purpose/Topographic Survey

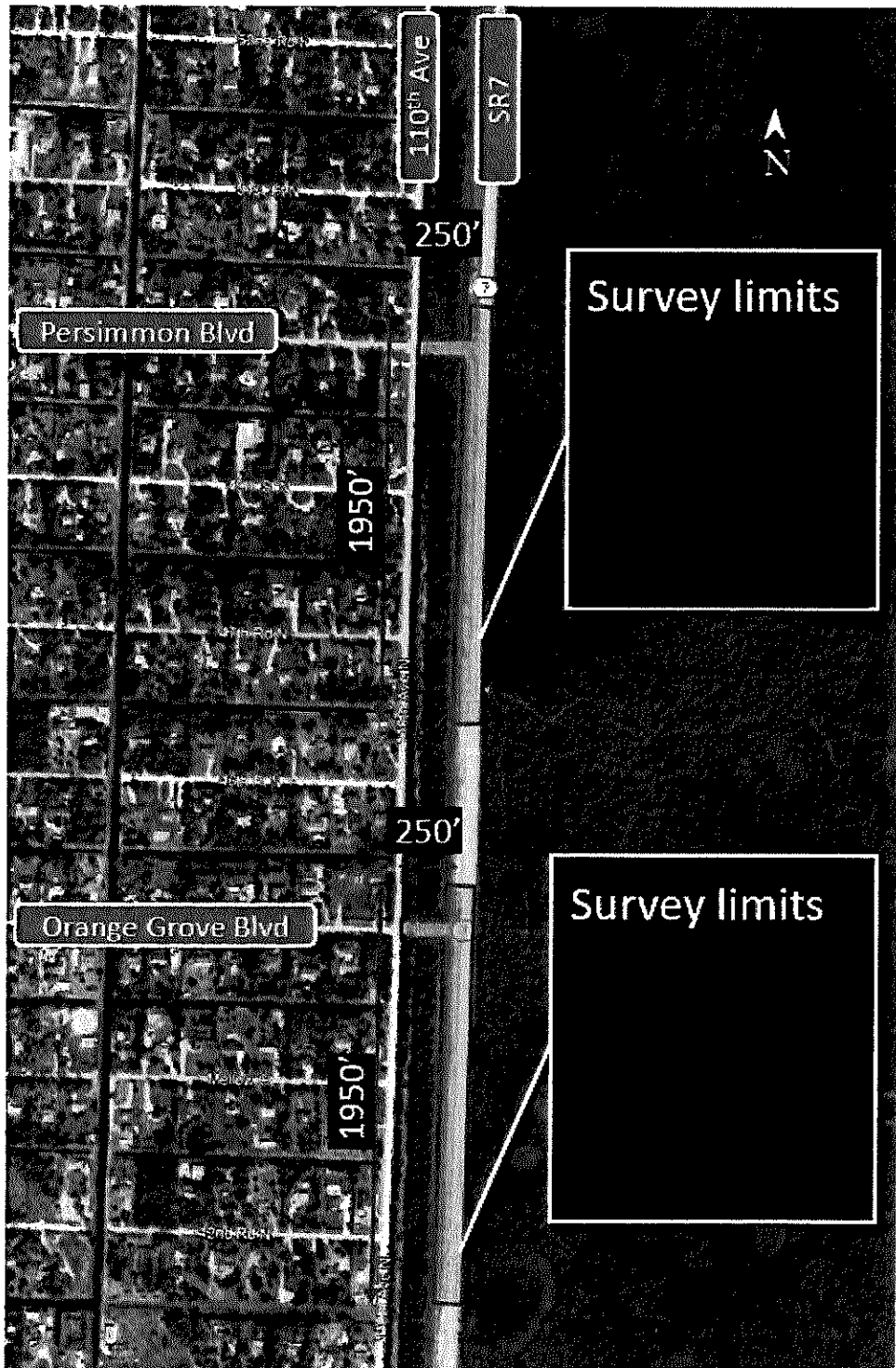
Scope of Services

SR7 Right Turn Lanes - Orange Grove/Persimmon Blvd.

HSQ GROUP, LLC

Engineers • Planners • Surveyors

1001 Yamato Road • Boca Raton, Florida 33431, Suite 105 • Phone (561) 392-0221 hsqgroupinc.com



Scope of Services
SR7 Right Turn Lanes - Orange Grove/Persimmon Blvd.

Estimate of Work Effort and Cost

Name of Project: SR7 Right Turn Lanes - Orange Grove/Persimmon Blvd.
 PBC Project Number: 2024507

Consultant Name: HSQ Group, LLC
 Consultant Number: VC0000016826
 Date: 6/12/2024

Task Description	Total Staff Hours	Staff Categories								Staff Hours By Activity	Salary Cost By Activity	Average Rate Per Task
		Senior Engineer	Project Engineer	Project Manager	Engineer Intern	Two-Man Crew	Senior Surveyor	Surveyor	Survey Technician			
		\$69.00	\$55.00	\$70.00	\$37.00	\$55.00	\$60.00	\$50.00	\$33.00			
BASIC SERVICES												
4 Roadway Analysis	216.0 ✓	22.0	108.0	64.0	22.0	0.0	0.0	0.0	0.0	216.0	\$12,752.00	\$ 59.04
5 Roadway Plans	391.0 ✓	20.0	78.0	39.0	254.0	0.0	0.0	0.0	0.0	391.0	\$17,798.00	\$ 45.52
6a Drainage Analysis	98.0 ✓	19.6	68.6	9.8	0.0	0.0	0.0	0.0	0.0	98.0	\$5,811.40	\$ 59.30
6b Drainage Plans	122.0 ✓	6.0	48.0	19.0	49.0	0.0	0.0	0.0	0.0	122.0	\$6,197.00	\$ 50.80
7 Utilities	76.0 ✓	15.0	15.0	8.0	38.0	0.0	0.0	0.0	0.0	76.0	\$3,826.00	\$ 50.34
8 Environmental Permits, Compliance & Clearances	163.0 ✓	49.0	65.0	17.0	32.0	0.0	0.0	0.0	0.0	163.0	\$9,330.00	\$ 57.24
19 Signing & Pavement Marking Analysis	14.0 ✓	0.0	5.5	5.5	3.0	0.0	0.0	0.0	0.0	14.0	\$798.50	\$ 57.04
20 Signing & Pavement Marking Plans	79.0 ✓	4.0	11.0	20.0	43.0	0.0	0.0	0.0	0.0	78.0	\$3,872.00	\$ 49.64
21 Basic Surveying Services	207.0 ✓	0.0	0.0	0.0	0.0	72.0	12.0	31.0	92.0	207.0	\$9,266.00	\$ 44.76
22 Topographic Survey	64.0 ✓	0.0	0.0	0.0	0.0	0.0	0.0	10.0	54.0	64.0	\$2,282.00	\$ 35.66
Total Staff Hours (Basic Services)	1430.0	135.6	399.1	182.3	441.0	72.0	12.0	41.0	146.0	1429.0		
Total Staff Cost (Basic Services)		\$9,356.40	\$21,950.50	\$12,761.00	\$16,317.00	\$3,960.00	\$720.00	\$2,050.00	\$4,818.00		\$71,932.90	\$ 50.34
OPTIONAL SERVICES												
1 Post Design	40.0 ✓	12.0	16.0	8.0	4.0					40.0	\$2,416.00	\$ 60.40
Total Staff Hours (Optional Services)	40.0	12.0	16.0	8.0	4.0	0.0	0.0	0.0	0.0	40.0		
Total Staff Cost (Optional Services)		\$828.00	\$880.00	\$560.00	\$148.00	\$0.00		\$0.00	\$0.00		\$2,416.00	\$ 60.40

EBO SBE Calculation for this Fee Summary	SBE \$	Non-SBE \$
Prime		\$207,683.43 ✓
Pacifica Engineering Services, LLC	\$9,039.64 ✓	
Subconsultant 2		
Subconsultant 3		
Subconsultant 4		
Subconsultant 5		
Totals \$	9,039.64	\$ 207,683.43

SBE % Achieved 4.17% ✓
 SBE % Committed 80.00%

Basic Services:	
Salary Related Costs:	\$71,932.90
Contract Multiplier	2.79
Subtotal Basic Services (Prime Firm):	\$200,692.79
Basic Services Total:	\$200,692.79 ✓

Reimbursables:	
Geotechnical Services (Pacifica Engineering, LLC)	\$9,039.64
Permit Fees (HSQ Group, LLC)	\$250.00 ✓
Reimbursables Total:	\$9,289.64

Optional Services:	
Prime Consultant (Unloaded)	\$2,416.00
Contract Multiplier	2.79
Prime Consultant (Loaded)	\$6,740.64
Optional Services Total:	\$6,740.64 ✓

Grand Total Estimated Fees: \$216,723.07 ✓

Project Activity 4: Roadway Analysis

Task No.	Task	Units	No of Units	Hours/ Unit	Total Hours	Comments
4.1	Typical Sections	EA	4	1	4	
4.2	Master plan	LS	1	40	40	for 2 intersections
4.3	Coordination with FDOT	LS	1	0	0	included in the permitting
4.5	Horizontal /Vertical Design	LS	1	100	100	EOP profile, PGL, geometry for 2 intersections
4.6	Access Management	LS	1	0	0	
4.7	Auto turn	LS	1	6	6	
4.13	Gravity wall / sidewalk / GR evaluation	LS	1	14	14	FOR ORANGE GROVE
4.14	Quantities	LS	1	14	14	
4.15	Master Plan Cost Estimate	EA	1	6	6	
4.16	Construction Plan Cost Estimates	EA	2	4	8	65% and final
Roadway Analysis Technical Subtotal					192	
4.18	Field Reviews	LS	2	6	12	for 2 people
4.19	Design meeting with the county	EA	2	6	12	for 2 people
Roadway Analysis Nontechnical Subtotal					24	
4. Roadway Analysis Total					216	

Project Activity 5: Roadway Plans

Task No.	Task	Units	No. of Units or Sheet	Hours/ Unit or Sheet	Total Hours	Comments
5.1	Key Sheet	Sheet	1	4	4	
5.3	Master plan submittal	LS	1	16	16	
5.3.1	Typical Sections	sheet	2	8	16	
5.3.2	Typical Section Details	EA	1	4	4	
5.4	General Notes/Pay Item Notes	Sheet	1	6	6	
5.5	Summary of Quantities Sheet with pay item notes	Sheet	1	12	12	
5.8	Profile Sheet	EA	8	12	96	(1 on side street +3 for SR 7) X 2 = 8
5.9	Plan Sheet	EA	8	12	96	
5.11	Baseline Control	Sheet	1	0	0	
5.12	Driveway/ Sidestreet Profiles	EA	0	10	0	
5.14	Special Details	LS	1	8	8	gravity wall, islands etc
5.16	Roadway Soil Survey Sheet(s)	Sheet	1	1	1	
5.17	Cross Sections	EA	44	3	132	at 100'
5.21	Utility Adjustment Sheets	Sheet	0	12	0	
5.23	Project Network Control Sheet(s) and ref points sheets	Sheet	1	0	0	
5.25	Utility Verification Sheet(s) (SUE Data)	Sheet	0	2	0	
Roadway Plans Technical Subtotal					391	✓

Project Activity 6a: Drainage Analysis

Task No.	Task	Units	No of Units	Hours/ Unit	Total Hours	Comments
6a.7	Swale design	ea	2	6	12	redesign swales tp accommodate water quality and quantities
6a.8	Spread Calculations	EA	5	2	10	
6a.13	Drainage Design Documentation	LS	1	40	40	
6a.16	ASAD Pipe Sizing Calculations	LS	1	24	24	4 systems at SR 7 and 2 systems at side streets
6a.19	Exfiltration systems	EA	2	6	12	
60.20	Pond Siting Report	LS	0	0	0	
6a. Drainage Analysis Total					98	✓

6b. Drainage Plans

Task No.	Task	Units	No. of Units or Sheet	Hours/ Unit or Sheet	Total Hours	Comments
6b.1	Drainage Map	Sheet	2	15	30	
6b.5	Drainage Structure Sheet(s) (Per Structure)	EA	6	3	18	
6b.6	Miscellaneous Drainage Detail Sheets	Sheet	1	8	8	
6b.11	Erosion Control Plan Sheet(s)	Sheet	11	6	66	8 plans+ 3 notes etc
Drainage Plans Technical Subtotal					122 ✓	

Project Activity 7: Utilities

Task No.	Task	Units	No of Units	Hours/ Unit	Total Hours	Comments
7.3	Prepare initial plans for utility coordination	LS	1	12	12	use specific purpose survey sheets
7.10	Review Utility Markups	LS	1	20	20	
7.11	Utility Coordination/Followup	LS	1	8	8	
7.13	Establish a utility dgn file	LS	1	16	16	
7.16	Prepare utility conflict matrix	LS	1	8	8	
7.17	Utility Coordination meetings and meeting minutes	EA	2	6	12	2 people.
7.18	Utility Verification sheet	EA	1	0	0	not in contract
7. Utilities Total					76 ✓	

Project Activity 8: Environmental Permits

Task No.	Task	Units	No. of Units	Hours/ Units	Total Hours	Comments
	Environmental Permits, Compliances and Clearances					
8.1	Pre Application meetings sfwmd including meeting preparation	EA	1	3	3	virtual meeting
8.2	Complete and Submit Required SFWMD permit	LS	1	40	40	including RFIs
8.3	FDOT permit for drainage, signal and utility work	LS	1	70	70	including RFIs
8.4	ITID permit	LS	1	50	50	including RFIs
Environmental Permits, Compliance, and Clearances/Reevaluations Technical Subtotal					163 ✓	

Project Activity 19: Signing and Pavement Marking Analysis

Task No.	Task	Units	No. of Units	Hours/ Units	Total Hours	Comments
19.1	Traffic Data Analysis	LS	0	0	0	
19.2	Plan sheets	LS	0	0	0	
19.3	Reference and Master Design File	LS	0	0	0	
19.4	Multi-Post Sign Support Calculations	EA	0	0	0	
19.5	Sign Panel Design Analysis	EA	0	0	0	
19.6	Sign Lighting/Electrical Calculations	EA	0	0	0	
19.7	Quantities	LS	1	8	8	
19.8	Cost Estimate	LS	2	3	6	
19.9	Technical Special Provisions	LS	0	0	0	
19.10	Other Signing and Pavement Marking	LS	0	0	0	
Signing and Pavement Marking Analysis Technical Subtotal					14	

Project Activity 20: Signing and Pavement Marking Plans

Task No.	Task	Units	No of Units	Hours/ Unit	No. of Sheets	Total Hours	Comments
20.1	Key Sheet	Sheet	1	1	1	1	use roadway cover sheets
20.3	Tabulation of Quantities	Sheet	1	8	1	8	
20.4	General Notes/Pay Item Notes	Sheet	1	6	1	6	
20.5	Plan Sheets	Sheet	8	8	8	64	
20.6							
Signing and Pavement Marking Plans Technical Subtotal					11	79	

**SR7 Right Turn Lanes -Orange
Grove/Persimmon Blvd. (OPTIONAL SERVICES)**

Name of Project:
County:
Project Number

PBC
2024507



Nour Shehadeh

Staff Classification	Total Staff Hours From "SH Summary Firm"	Senior Engineer	Project Engineer	Project Manager	Engineer Intern	Salary Cost By Activity
Optional services	40 /	12.00	16.00	8.00	4.00	\$2,416.00
Total Staff Hours	40	12.00	16.00	8.00	4	
Total Staff Cost		\$828.00	\$880.00	\$560.00	\$148.00	\$2,416.00

Check = \$2,416.00

SALARY RELATED COSTS: \$2,416.00
MULTIPLIER 2.79 \$6,740.64

TOTAL OPTIONAL SERVICES \$6,740.64 ✓

Optional Services

Task No.	Task	Units	No of Units	Hours/ Unit	Total Hours	Comments
1.0	Post design services	LS	1	40	40	
2.0	FLOOD ROUTING	LS	1	0	0	Flood routing analysis for the swale area along the west side of SR7, within the project limits. (not included)
4. Roadway Analysis Total					40 ✓	

SR7 Right Turn Lanes -Orange Grove/Persimmon Blvd

Basic Survey Services



HSQ GROUP, LLC

Engineers • Planners • Surveyors

Item no	Task	Estimated Work Hours				Notes
		Two-Man Crew	Senior Surveyor	Surveyor	Survey Technician	
1	Review title search provided by Palm Beach County		1	8		
2	Prepare a drawing showing the linework, width, and recording information of the right-of-way and easement documents provided and submit the drawing to the county for review and confirmation of the existing right-of-way.		2	4	24	
3	Collect horizontal control data using the global positioning system from published monumentation, and establish control points every 600'± tied to Florida East Zone State Plane Coordinates (NAD 83, 1990 adjustment).	16	1	2	12	
4	Collect published vertical benchmarks, perform a closed level loop, and establish benchmarks outside the limits of construction (NAVD 1988 datum) every 600'±.	8	1	2	6	
5	Locate section corners, subdivision corners, and other existing control monument.	4	1	2	4	
6	Locate visible above ground features with elevations (including but not limited to sidewalks, utilities, signage, striping, etc.) along the project area and as described under survey limits	16		2	16	
7	Cross-section the project area at 100' intervals, within the survey limits.	8	2	4	8	
8	Obtain drainage structure Rim/Grate information. Inverts, pipe sizes/types and culvert crossings will be obtained.	8		1	4	
9	Locate trees 4" DBH and grater, indicating size and type, within the survey limits.	4			2	
10	Prepare a DTM (digital terrain model) of the project limits.		2	2	16	
11	Establish baselines along SR7, Orange Grove Blvd., and Persimmon Blvd. Determine historical baselines from available PBCO documents and tie to new baseline if different. Set baseline horizontal control points at the beginning, PC, PT, and end points. Set reference points to the baseline points (3 reference points each).	8	2	4	0	
Subtotal Hours		72 ✓	12 ✓	31 ✓	92 ✓	
Basic Survey Services Total					207 ✓	

SR7 Right Turn Lanes -Orange Grove/Persimmon Blvd
 Topographic Survey



HSQ GROUP, LLC

Engineers • Planners • Surveyors

Task No.	Task	Estimated Work Hours				Notes
		Two-Man Crew	Senior Surveyor	Surveyor	Survey Technician	
12	Prepare a Topographic Survey			4	32	
13	Prepare Project Network Control Sheet (to include baseline data, PBCO control monuments, baseline			4	16	
14	Reference Point Sheet to be included in the Plan Set	0		2	6	
Subtotal Hours		0	0	10	54	
Topographic Survey Total					64 ✓	

PERMIT APPLICATION FEE SCHEDULE

(Effective 8/7/2016)

Environmental Resource Permits

New Individual or Conceptual Permit (excludes Agriculture, Mitigation Bank)

- Project area < 10 acres; no wetlands or surface waters; no boat slips.....\$ 2,000
- Project area < 10 acres; < 1 acre wetland or surface water; < 10 boat slips.....\$ 3,500
- Project area < 40 acres; < 3 acres wetlands or surface waters; < 30 boat slips.....\$ 5,500
- Project area < 100 acres; < 10 acres wetlands or surface waters; < 50 boat slips..... \$ 7,500
- Project area < 640 acres; < 50 acres wetlands or surface waters; < 50 boat slips..... \$ 13,125
- Project area > 640 acres; > 50 acres wetlands or surface waters; > 50 boat slips..... \$ 25,000

New Individual Agriculture or Silviculture Permit

- Project area < 10 acres; < 1 acre wetland or surface water..... \$ 859
- Project area < 40 acres; < 3 acres wetlands or surface waters..... \$ 2,444
- Project area < 100 acres; < 10 acres wetlands or surface waters..... \$ 4,029
- Project area < 640 acres; < 50 acres wetlands or surface waters..... \$ 5,284
- Project area > 640 acres; > 50 acres wetlands or surface waters..... \$ 6,605

Individual or Conceptual Permit Major Modification (excludes Agriculture, Mitigation Banks)

- Project area < 10 acres; no wetlands or surface waters; no boat slips.....\$ 1,200
- Project area < 10 acres; < 1 acre wetland or surface waters; < 10 boat slips.....\$ 2,100
- Project area < 40 acres; < 3 acres wetlands or surface waters; < 30 boat slips.....\$ 3,300
- Project area < 100 acres; < 10 acres wetlands or surface waters; < 50 boat slips.....\$ 4,500
- Project area < 640 acres; < 50 acres wetlands or surface waters; < 50 boat slips.....\$ 7,875
- Project area > 640 acres; > 50 acres wetlands or surface waters; > 50 boat slips..... \$ 15,000

Individual Agriculture or Silviculture Permit Major Modification

- Project area < 10 acres; < 1 acre wetland or surface water..... \$ 515
- Project area < 40 acres; < 3 acres wetlands or surface waters.....\$ 1,466
- Project area < 100 acres; < 10 acres wetlands or surface waters.....\$ 2,417
- Project area < 640 acres; < 50 acres wetlands or surface waters.....\$ 3,170
- Project area > 640 acres; > 50 acres wetlands or surface waters.....\$ 3,963

Individual or Conceptual Permit Minor Modification (includes Mitigation Banks)

- Time Extension of Permit (not associated with SB/HB)..... \$ 500
- Time Extension of Permit (associated with SB/HB)..... \$ 0
- Minor errors not requiring technical review.....\$ 0
- Transfer of ownership.....\$ 0
- Transfer from construction to operation phase.....\$ 0
- All other minor modifications (Letter Modification)..... \$ 250 ✓

New Individual or Conceptual Permit for a Mitigation Bank

- Permit area < 100 acres..... \$ 7,500

8/7/2016

REVISED June 3, 2024
April 1, 2024

HSQ GROUP, LLC
1001 Yamato Road, Suite 105
Boca Raton, Florida 33431

Attention: Mr. Rommy Shehadeh, P.E.
Email: rommy@hsqgroup.net

Re: Scope of Services for Geotechnical Engineering Services
SR7 & Orange Blossom/Persimmon Boulevard Improvements
Palm Beach County, Florida
PACIFICA Proposal No.: 610-12017760

Dear Mr. Shehadeh:

In accordance with email provided by **HSQ GROUP, Pacifica Engineering Services, LLC (PACIFICA)**, is pleased to submit this scope of services to perform a subsurface exploration program for the above-referenced project. Included herein is our understanding of the proposed development along with a scope of services, cost estimates, and anticipated schedules.

It is understood that plans for this project consist of widening the existing roadway near the intersection of SR7 and Orange Blossom Road and SR7 and Persimmon Road.

GEOTECHNICAL SCOPE OF SERVICES

Based on the requested scope and locations, PACIFICA proposes to perform the following geotechnical field services:

Basic Services

- Perform three (3) Standard Penetration Test (SPT) borings to a depth of 10 feet below existing grades west of the SR7 and Orange Blossom Boulevard intersection, (approximately 1500 feet).
- Perform three (3) Standard Penetration Test (SPT) borings to a depth of 10 feet below existing grades west of the SR7 and Persimmon Boulevard intersection, (approximately 1500 feet).

The SPT borings will be performed with truck-mounted machinery using rotary drilling procedures. Samples of the in-place materials will be recovered with a standard split barrel driven with a 140-pound hammer falling 30 inches (the Standard Penetration Test in accordance with ASTM D1586). After completion of drilling, all boreholes will be grouted, asphalt hot-mix patch applied not in the wheel path, where needed, and the site generally cleaned, as required.

Underground utility clearance will be required prior to the commencement of the geotechnical field exploration. Therefore, PACIFICA will contact "Sunshine One-Call" Service to obtain underground public utility clearance. PACIFICA understands that private utilities will be marked by others prior to each mobilization.

Due to the proximity of the boring locations to the roadway, Maintenance of Traffic (MOT) will be needed to perform the geotechnical scope of work. PACIFICA will submit MOT plans with an estimated schedule in accordance with FDOT standards for PBC approval prior to the start of fieldwork. PACIFICA will use FDOT Maintenance of Traffic (MOT) Plans Design Standards Index Series 600 when developing MOT plans.

GEOTECHNICAL REPORT DELIVERABLES

After the geotechnical field exploration is completed, a geotechnical engineer will review the soil samples and select samples will be tested for physical properties such as gradation, moisture content and organic content, if deemed necessary. The results of the geotechnical exploration will be transmitted in a report which will specifically contain the information listed below:

1. A location plan of the site showing the location of the soil borings.
2. Logs of the exploratory borings will be provided, which furnish the results of the SPT sampling.
3. The existence of organic soils or any other soil conditions.
4. Groundwater readings during the time of field exploration.
5. On-Site Soil Suitability

GEOTECHNICAL SCHEDULE

Our study can begin one day after we receive authorization to proceed. We will start drilling after public underground utilities have been located and identified, which may take 2-4 business days. The geotechnical field exploration should be completed in 1 business day. Laboratory testing should be completed within one week following final field demobilization. The written report of the subsurface exploration will be available within two weeks following the completion of final laboratory testing. We estimate that our study will be completed within 4 weeks from your notice to proceed.





SR 7 and Orange Blossom Boulevard
Proposed Boring Location Map

Legend

● Proposed SPT Boring @ 10 FT

300 FT



Google Earth
Image © 2024 Airbus



COST BREAKDOWN

<u>DESCRIPTION</u>	<u>UNIT</u>	<u># OF UNITS</u>	<u>UNIT RATE</u>	<u>TOTAL</u>
I. FIELD EXPLORATIONS				
Mobilization of Drill Equipment (50-mile travel)	each	1.0	\$420.00	\$420.00
Engineering Technician (Site Reconnaissance, Boring Layout and Underground Utility Clearance) (Raw Rate: \$31*3)	hour	4.0	\$93.00	\$372.00
Standard Penetration Tests - Truck Rig (0' - 50')	feet	60.0	\$16.00	\$960.00
Grout Bore Hole (0 to 50 Feet)	feet	60.0	\$6.40	\$384.00
Casing (0 to 50 Feet)	feet	60.0	\$9.80	\$588.00
II. SOIL & AGGREGATE TESTING				
Organic Content Test	each	2.0	\$55.00	\$110.00
Natural Sample Moisture Content	each	2.0	\$20.00	\$40.00
Grain size determination: Full grain size (8 sieves)	each	2.0	\$78.00	\$156.00
Grain size determination: Wash through (#200)	each	2.0	\$60.00	\$120.00
III. ENGINEERING SERVICES (MULTIPLIER: 3)				
Principal Engineer, P.E. (Raw Rate: \$84.10*3)	hour	1.0	\$252.30	\$252.30
Senior Engineer (Raw Rate: \$69.3*3)	hour	4.0	\$207.90	\$831.60
Engineer, P.E. (Raw Rate: \$49.05*3)	hour	10.0	\$147.15	\$1,471.50
Drafter / CADD (Raw Rate: \$31.35*3)	hour	6.0	\$94.05	\$564.30
IV. Maintenance of Traffic (MOT)				
Maintenance of Traffic (MOT) including MOT Plan	day	1.0	\$1,450.00	\$1,450.00
MOT Plan and MOT Permitting	hour	4.0	\$180.00	\$720.00
Advance MOT Technician	hour	6.0	\$99.99	\$599.94
ESTIMATED GEOTECHNICAL BASIC FEE FOR ROADWAY WIDENING				\$9,039.64

OEBO SCHEDULE 1

SOLICITATION/PROJECT/BID NAME: SR7 Right Turn Lanes - Orange Grove/Persimmon Boulevard
 July 26, 2022
 SOLICITATION OPENING/SUBMITTAL DATE: _____

SOLICITATION/PROJECT/BID NO.: 2024507
 Engineering and Public Works
 COUNTY DEPARTMENT: _____

Section A PLEASE LIST THE DOLLAR AMOUNT OR PERCENTAGE OF WORK TO BE COMPLETED BY THE PRIME CONTRACTOR/CONSULTANT* ON THE PROJECT:

NAME OF PRIME RESPONDENT/BIDDER: HSQ Group, LLC ADDRESS: _____

CONTACT PERSON: Nour Shehadeh PHONE NO.: 561-392-0221 E-MAIL: nour@hsqgroup.net

PRIME'S DOLLAR AMOUNT OR PERCENTAGE OF WORK: \$207,683.43

*SMWBE Prime's must include their percentage or dollar amount in the Total Participation line under section B.

Non-SBE MBE WBE SBE

Section B PLEASE LIST THE DOLLAR AMOUNT OR PERCENTAGE OF WORK TO BE COMPLETED BY ALL SUBCONTRACTORS/SUBCONSULTANTS ON THE PROJECT BELOW:

Subcontractor/Sub consultant Name	(Check all Applicable Categories)				DOLLAR AMOUNT OR PERCENTAGE OF WORK					
	Non-SBE	MBE	WBE	SBE	Black	Hispanic	Women	Caucasian	Asian	Other
		Minority Business	Women Business	Small Business						
1. Pacifica Engineering Services, LLC	<input type="checkbox"/>	<input checked="" type="checkbox"/>	<input type="checkbox"/>	<input checked="" type="checkbox"/>	\$9,039.64	_____	_____	_____	_____	_____
2.	<input type="checkbox"/>	<input type="checkbox"/>	<input type="checkbox"/>	<input type="checkbox"/>	_____	_____	_____	_____	_____	_____
3.	<input type="checkbox"/>	<input type="checkbox"/>	<input type="checkbox"/>	<input type="checkbox"/>	_____	_____	_____	_____	_____	_____
4.	<input type="checkbox"/>	<input type="checkbox"/>	<input type="checkbox"/>	<input type="checkbox"/>	_____	_____	_____	_____	_____	_____
5.	<input type="checkbox"/>	<input type="checkbox"/>	<input type="checkbox"/>	<input type="checkbox"/>	_____	_____	_____	_____	_____	_____

(Please use additional sheets if necessary)

Total \$9,039.64

Total Bid/Offer Price \$ 216,723.07

Total Certified S/M/WBE Participation \$ 9,039.64

I hereby certify that the above information is accurate to the best of my knowledge:

Nour Shehadeh Managing Member
 Name & Authorized Signature Title

- Note:**
- The amount listed on this form for a Subcontractor/sub consultant must be supported by price or percentage listed on the properly executed Schedule 2 or attached signed proposal.
 - Only those firms certified by Palm Beach County at the time of solicitation due date are eligible to meet the established OEBO Affirmative Procurement Initiative (API). Please check the applicable box and list the dollar amount or percentage under the appropriate demographic category.
 - Modification of this form is not permitted and will be rejected upon submittal.

A completed Schedule 2 is a binding document between the Prime Contractor/consultant and a Subcontractor/subconsultant (for any tier) and should be treated as such. The Schedule 2 shall contain bolded language indicating that by signing the Schedule 2, both parties recognize this Schedule as a binding document. All Subcontractors/subconsultants, including any tiered Subcontractors/subconsultants, must properly execute this document. Each properly executed Schedule 2 must be submitted with the bid/proposal.

SOLICITATION/PROJECT NUMBER: 2024507

SOLICITATION/PROJECT NAME: SR 7 Right Turn Lanes - Orange Grove/Persimmon Boulevard

Prime Contractor: HSQ Group, LLC Subcontractor: Pacifica Engineering Services, LLC

(Check box(s) that apply)

SBE WBE MBE M/WBE Non-S/M/WBE Date of Palm Beach County Certification (if applicable): 10/25/21-10/24/24

The undersigned affirms they are the following (select one from each column if applicable):

Column 1	Column 2	Column 3
<input checked="" type="checkbox"/> Male <input type="checkbox"/> Female	<input checked="" type="checkbox"/> African-American/Black <input type="checkbox"/> Asian American <input type="checkbox"/> Caucasian American	<input type="checkbox"/> Supplier
	<input type="checkbox"/> Hispanic American <input type="checkbox"/> Native American	

S/M/WBE PARTICIPATION – S/M/WBE Primes must document all work to be performed by their own work force on this form. Failure to submit a properly executed Schedule 2 for any S/M/WBE participation may result in that participation not being counted. Specify in detail, the scope of work to be performed or items supplied with the dollar amount and/or percentage for each work item. S/M/WBE credit will only be given for the areas in which the S/M/WBE is certified. A detailed proposal may be attached to a properly executed Schedule 2.

Line Item	Item Description	Unit Price	Quantity/ Units	Contingencies/ Allowances	Total Price/Percentage
1	Geotechnical Services	1	1	0	\$9,039.64

The undersigned Subcontractor/subconsultant is prepared to self-perform the above-described work in conjunction with the aforementioned project at the following total price or percentage: \$9,039.64

If the undersigned intends to subcontract any portion of this work to another Subcontractor/subconsultant, please list the business name and the amount below accompanied by a separate properly executed Schedule 2.

N/A

Name of 2nd/3rd tier Subcontractor/subconsultant

Price or Percentage: _____

HSQ Group, LLC

Print Name of Prime

By: [Signature]
Authorized Signature

Nour Shehadeh

Print Name

Managing Member

Title

Date: 8/2/2024

Pacifica Engineering Services, LLC

Print Name of Subcontractor/subconsultant

By: [Signature]
Authorized Signature

WESLEY FOSTER

Print Name

PRESIDENT

Title

Date: 8/1/2024



**Palm Beach County
Compliance Summary Report**

Vendor Number	Vendor Name	AM Best Rating	Insurance Carrier	Policy #	Eff. Date	Exp. Date	Coverage	Contract Number	Contract Name
DX00002027	HSQ Group, LLC		Compliant					2022058	Intersection Improvements Annual Design Services (R2023-0476)
		A+g , XV	American Guarantee and Liability Insurance Company	SXS445976200	11/1/2023	11/1/2024	Excess Liability		
		A+g , XV	Zurich American Insurance Company	GLO429303600	11/1/2023	11/1/2024	General Liability		
		A+p , XV	Pacific Insurance Company, Limited	830h058521723	12/15/2023	12/15/2024	Professional Liability		
		Ar , XV	Illinois National Insurance Co.	WC088407048ft	7/1/2024	7/1/2025	Workers Comp		

Risk Profile : Standard - Professional Services
Required Additional Insured : Palm Beach County Board of County Commissioners
Ownership Entity :